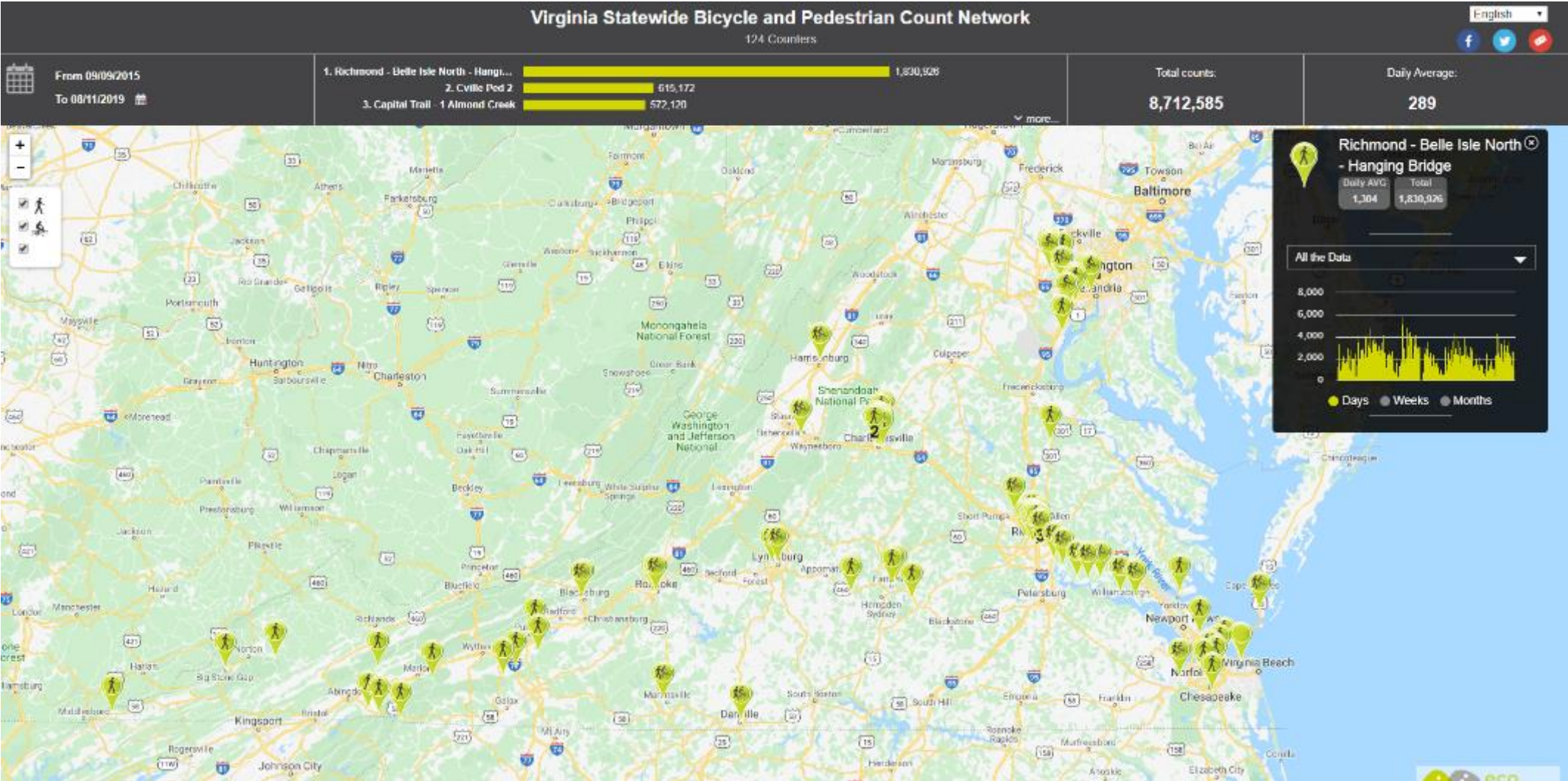




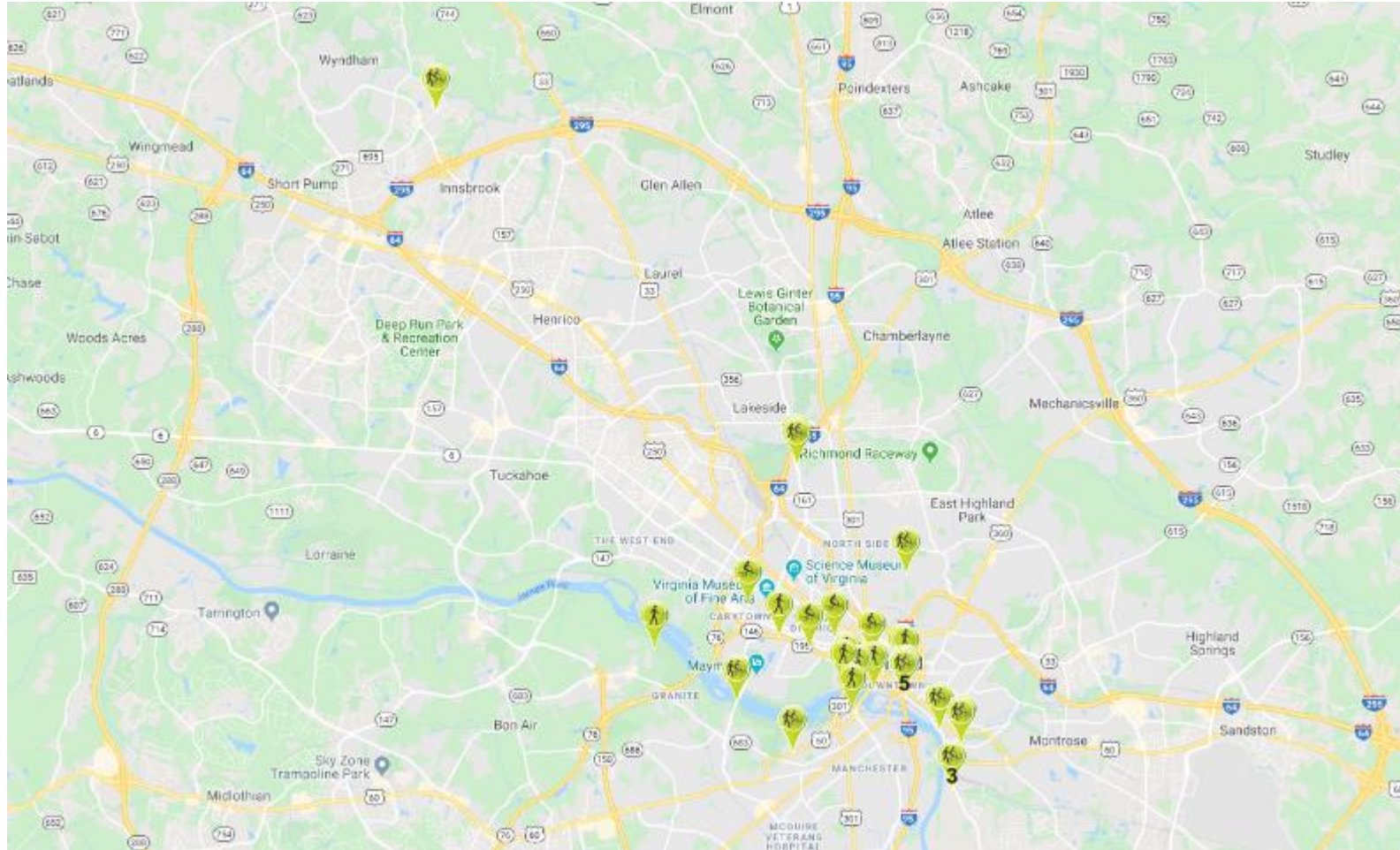
ACTIVE TRANSPORTATION WORKING GROUP

Bicycle and Pedestrian Count Program, Facility Inventory, SGR Bridges, Roadway Reconfiguration

Statewide Bicycle and Pedestrian Count Network



Statewide Bicycle and Pedestrian Count Network



Background

- September 2015, Seven permanent counter installed along the Capital Trail in Henrico and Charles City County
- December 2015 first on street installation on Memorial Ave in Roanoke
- Virginia Transportation Research Council completed report “Assessing the Feasibility of a Pedestrian and Bicycle Count Program in Virginia” in August 2018



Background

- 2018 mobile counting equipment acquired to begin testing and performing short duration counts using tubes and passive infrared



Count numbers

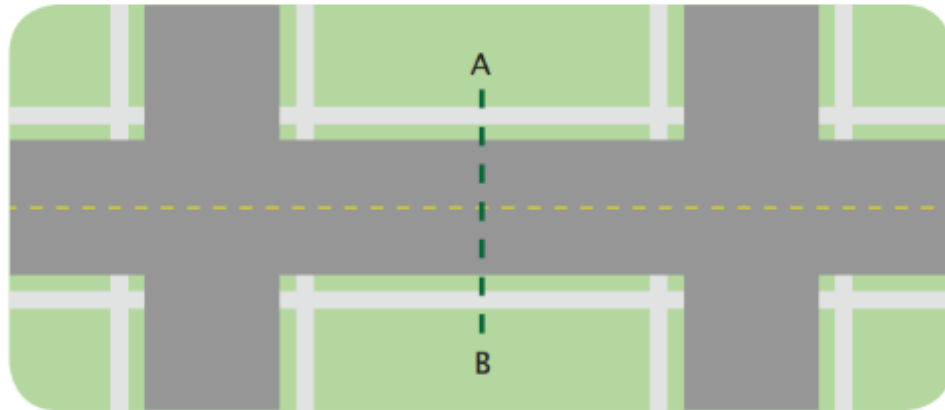
- **12 - Permanent counters**
 - **8 Capital Trail**
 - **1 Eastern Shore**
 - **1 Roanoke Memorial Bridge**
 - **2 Town of Blacksburg**
- **86 – Short duration counts**
- **98 – Total locations counted**

Selection and Duration

- Use for planning studies and concrete decision making when possible
- Otherwise, select a variety of facility types and contexts
- Standard duration has been at least 14 full days (this is a total of 16 days at a location due to omitting the installation and retrieval dates)
- If no reason to move counter we don't
- We don't keep counter in the office, just set it up somewhere local and wait for another opportunity or request

We are performing screenline counts with this equipment

Figure 3. Recommended Location for Screenline Counts



Screenline counts are best collected midblock on a segment of roadway or trail.



More information: [Washington State: Collecting Network-wide Bicycle and Pedestrian Data: A Guidebook for When and Where to Count](#)

Can Count

- Low volume, bicycle boulevard type roadways without on street parking
- Shared use paths
- Sidewalks with a buffer strip with signs
- Cycle tracks / two way bike lanes
- Worn paths where a sidewalk is missing

Cannot Count

- Crosswalks
- Intersections
- On street on busy roads
- Roads with on street parking (unless locality provides on street cable protectors)
- Shoulders / bike lanes with sidewalk on the back of curb

Twin Hickory – Henrico County



Van Dorn St – City of Alexandria



Llewelyn Ave – City of Norfolk



City of Richmond – Floyd Ave – Mixed Traffic



Damascus - Creeper Trail



Bluemont Way – Reston – Fairfax County



South Lake – Reston – Fairfax County



Hermitage Rd - City of Richmond



Williamsburg Rd - City of Richmond



HOURLY PROFILE - WEEKDAYS

📅 Current Year 📉 5d/7

📍 Richmond - Franklin St two way bike lane



HOURLY PROFILE - WEEKEND

📅 Current Year 📉 2d/7

📍 Richmond - Franklin St two way bike lane

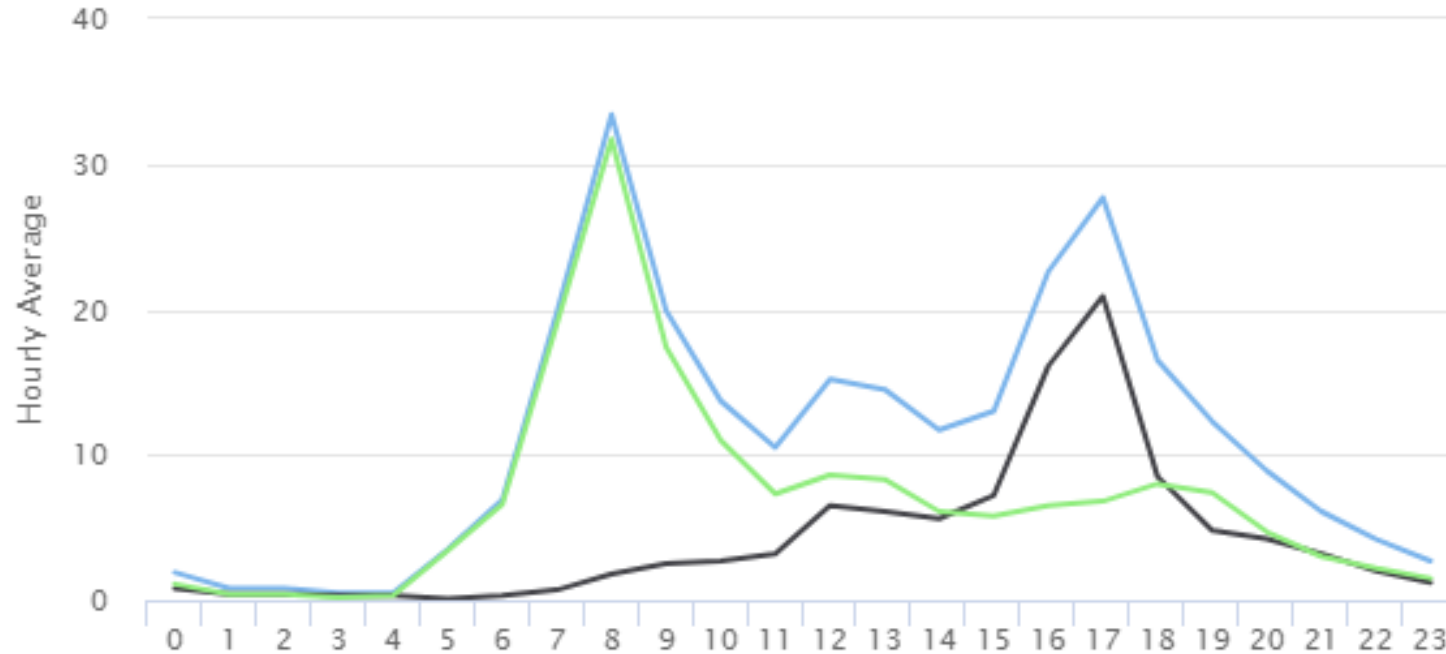


Commuting Pattern

- Weekday hourly profile on the left showing the normal AM and PM peaks
- Weekend hourly profile on the right showing a build up throughout the day

HOURLY PROFILE - WEEKDAYS

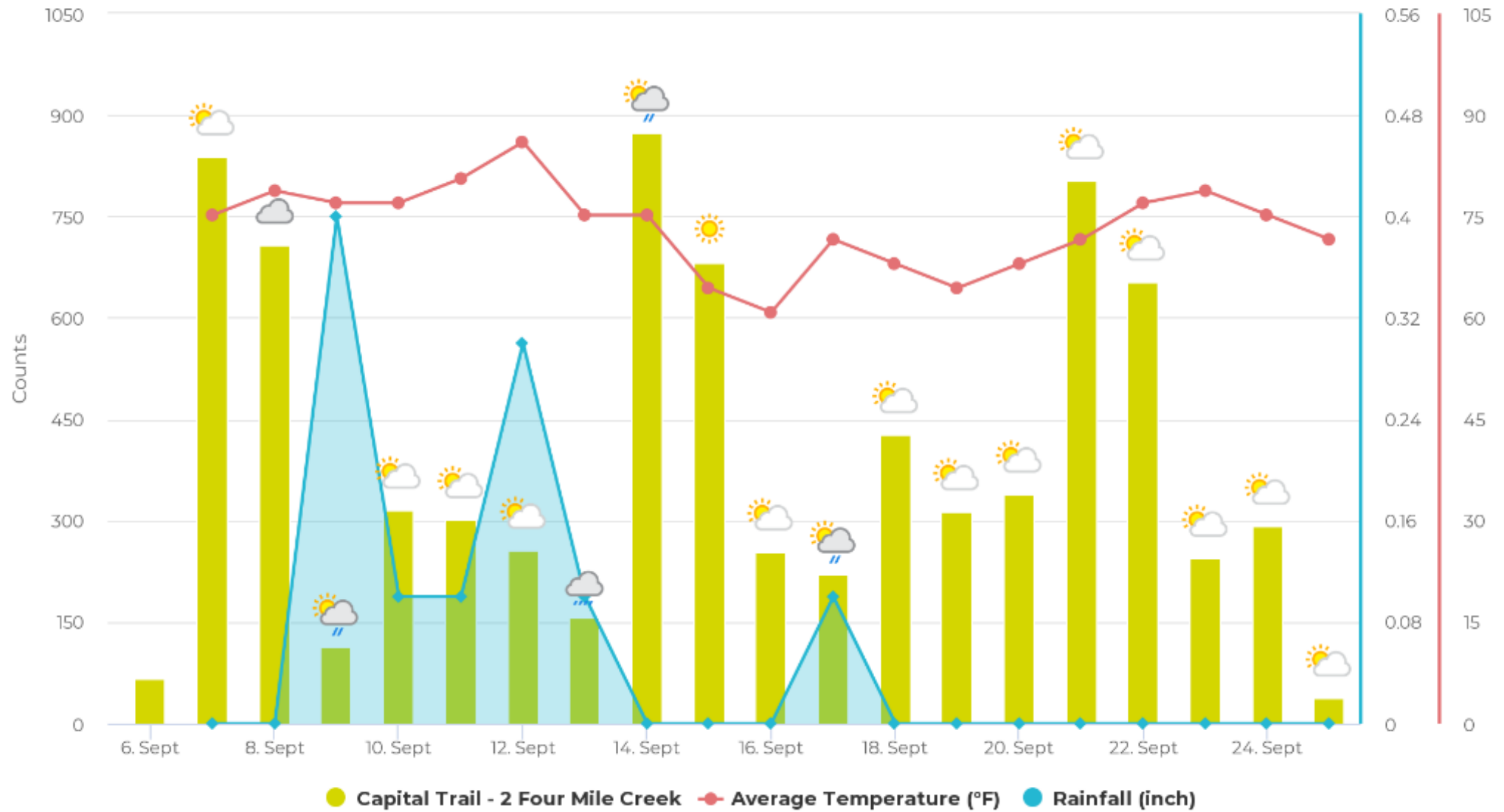
📅 Current Year 📉 5d/7 📍 Richmond - Franklin St two way bike lane 📊 IN OUT Total



- **Hourly profile on weekday on the Franklin two way bike lane by direction.**
- **The green line is peaking eastbound in the morning hours.**
- **The black line is peaking westbound in the evening.**
- **You can see the typical AM and PM peaks and that most users are commuting from the west towards downtown in the morning and back home in the evening.**

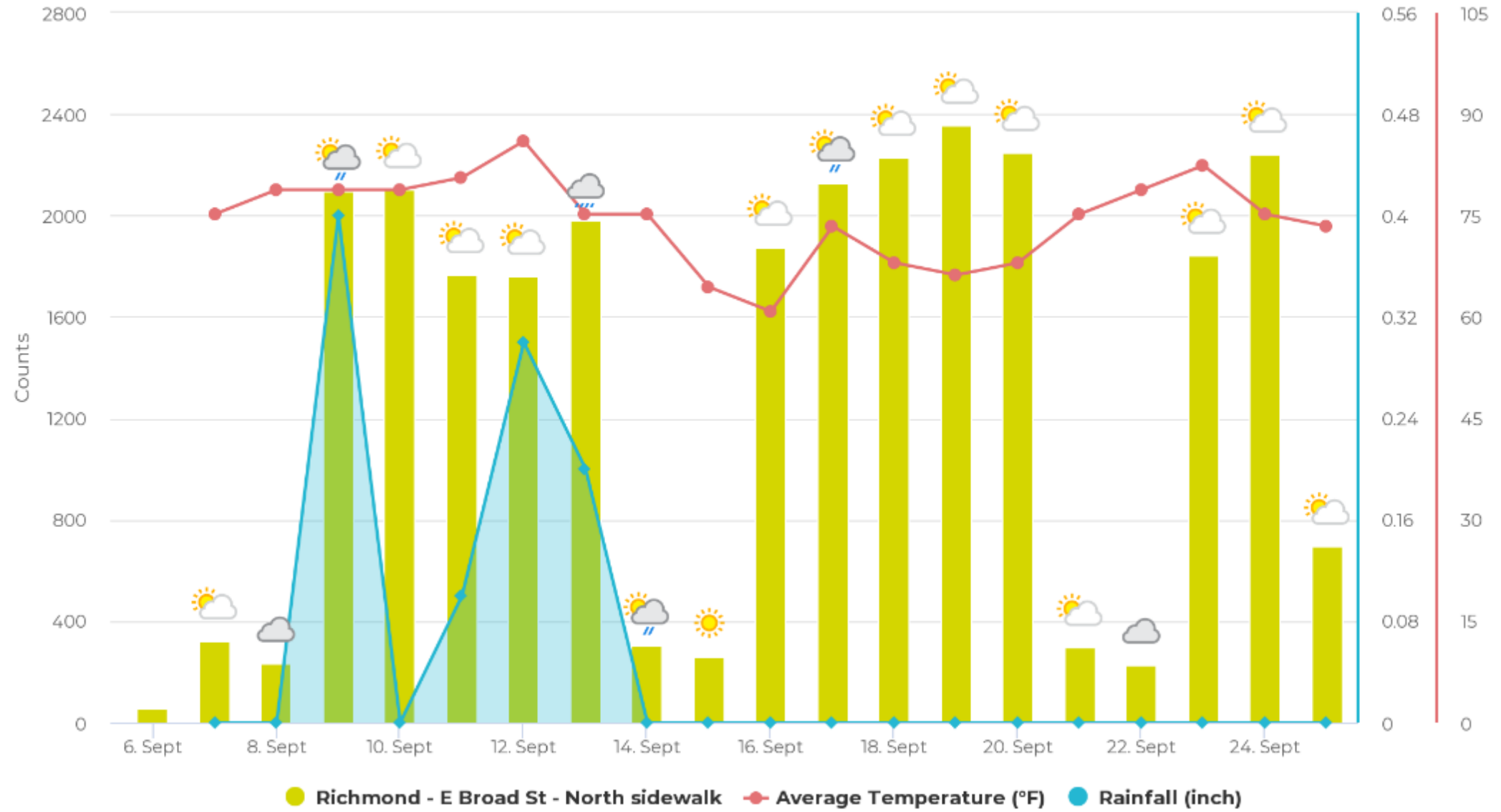
Weather

Capital Trail - 2 Four Mile Creek



Weather

Richmond - E Broad St - North sidewalk



Next Steps

- Development of factor groups
- Development of seasonal adjustment factors
- More robust data analysis including design and use of facilities
- Better understanding of where permanent counters are needed as reference points
- More targeted deployment plan
- More integration with STARS studies and other corridor studies
- More before and after studies for new facilities
- More integration of local counts including TrafX
- [Count Request Form](#)

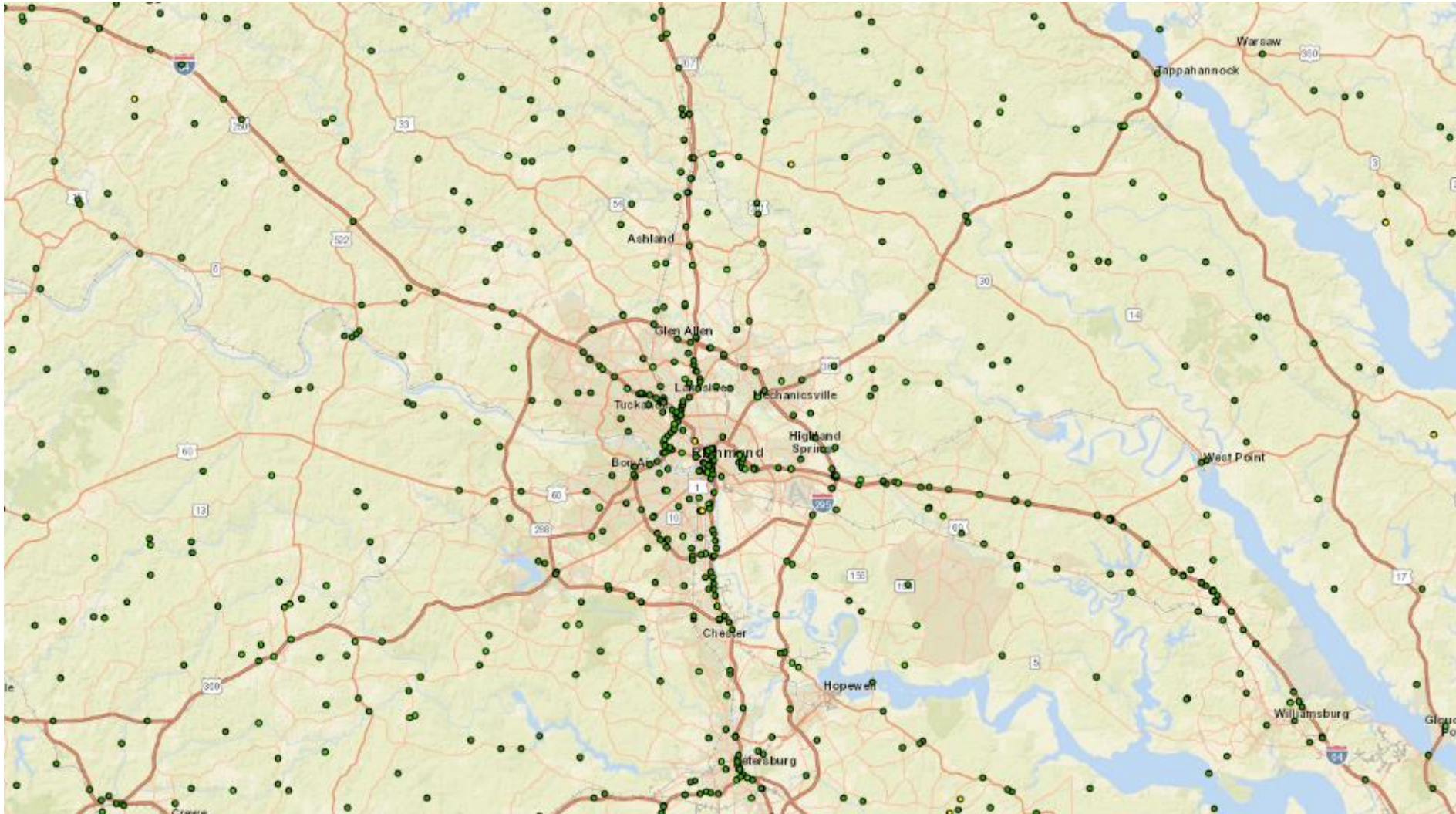
SGR Bridges

<http://www.virginiadot.org/business/resources/bridge/Manuals/IIIM/SBIIM95.pdf>

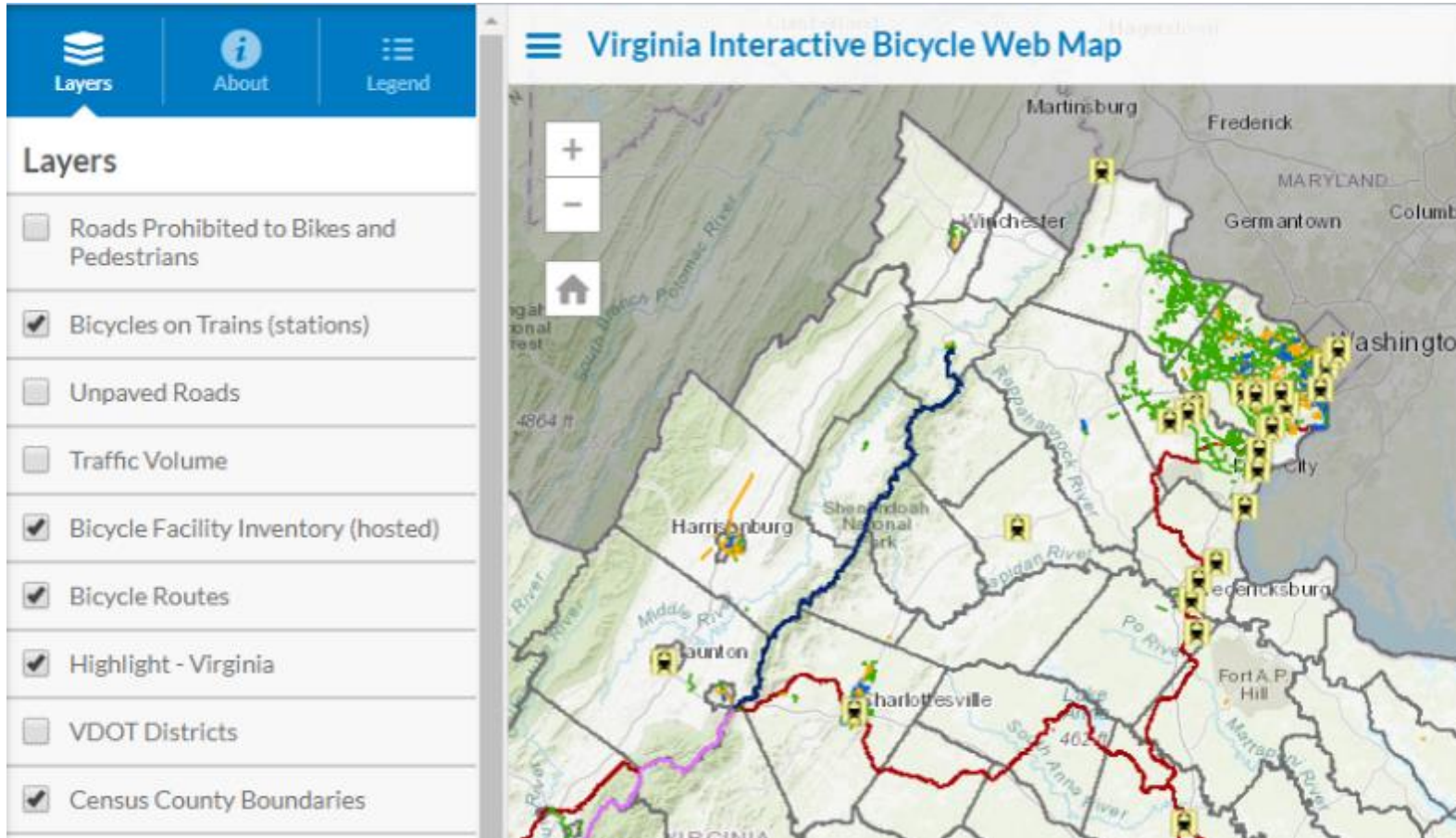
NON-QUALIFYING ITEMS Some examples of work items that do not qualify for SGR funds are provided below:

4. Bridge widening to accommodate bicycle or pedestrian facilities unless the approach roadway already has such facilities

SGR Bridges



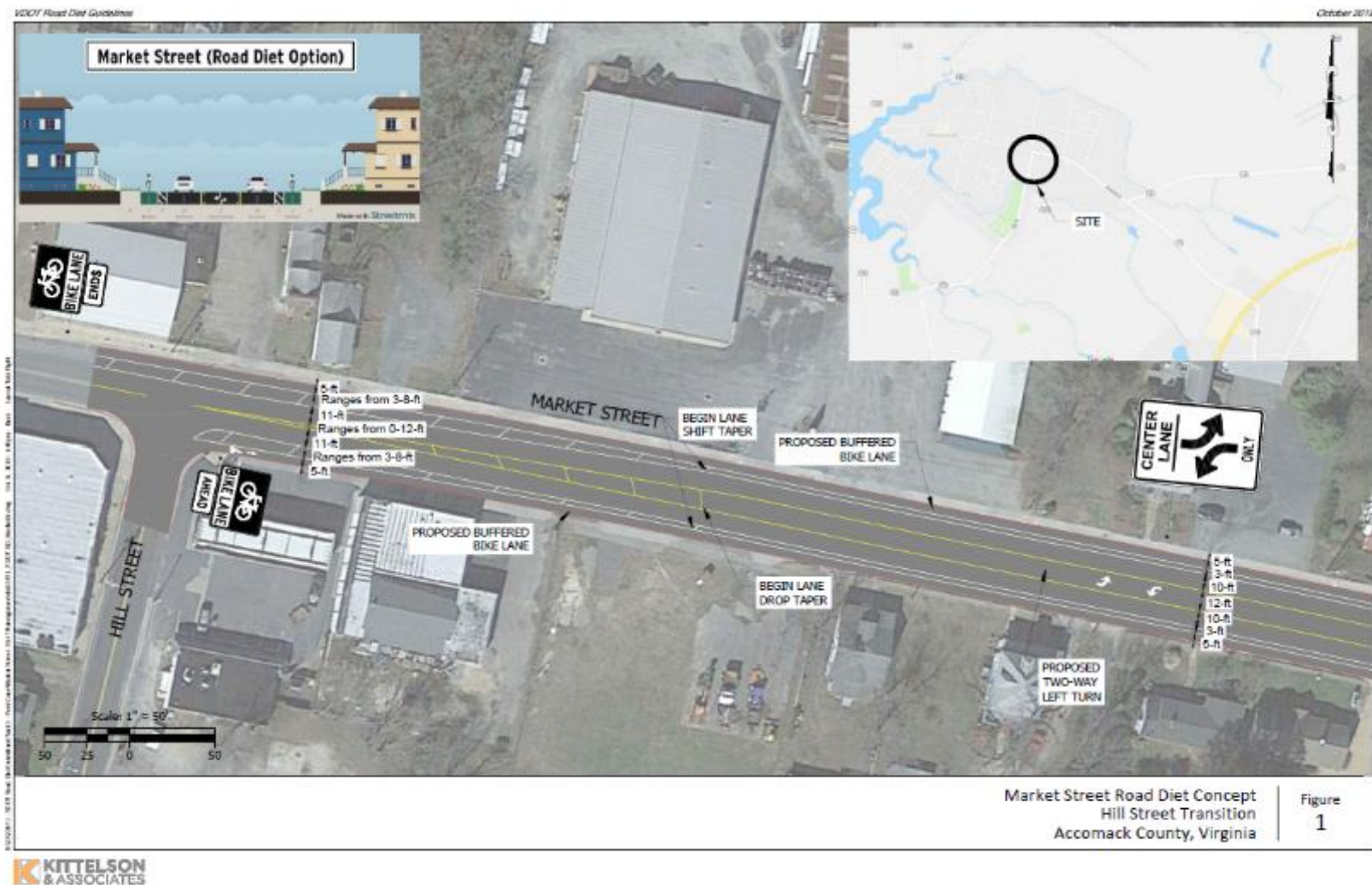
Virginia Interactive Bicycle Web Map



A new map is available titled the "[Virginia Interactive Bicycle Web Map](#)". This ArcGIS online map provides some new information and also combines data from other sources into one place. Available layers include bicycle facilities, train station information, U.S. Bicycle Routes, unpaved roads, roadways prohibited to bicyclists, and traffic volumes. Please review these maps for accuracy in your area and [provide corrections and feedback here](#).

Richmond District			
Locality	Designated Bike Lane Miles	Shared Use Path Miles	Total
Amelia County	0.0	0.0	0.0
Brunswick County	0.0	15.6	15.6
Charles City County	0.0	33.3	33.3
Chesterfield County	63.6	0.0	63.6
Dinwiddie County	0.0	0.0	0.0
Goochland County	0.0	0.0	0.0
Hanover County	2.2	0.0	2.2
Henrico County	2.3	27.2	29.5
Lunenburg County	0.0	2.4	2.4
Mecklenburg County	0.0	6.4	6.4
New Kent County	0.0	0.0	0.0
Nottoway County	0.0	1.9	1.9
Powhatan County	0.0	0.0	0.0
Prince George County	0.0	0.0	0.0
Colonial Heights City	0.0	1.9	1.9
Hopewell City	2.7	0.0	2.7
Petersburg City	0.0	0.0	0.0
Richmond City	39.0	8.3	47.3
Total:	109.7	96.9	206.6

Roadway Reconfiguration Guidelines



VDOT Active Transportation Newsletter

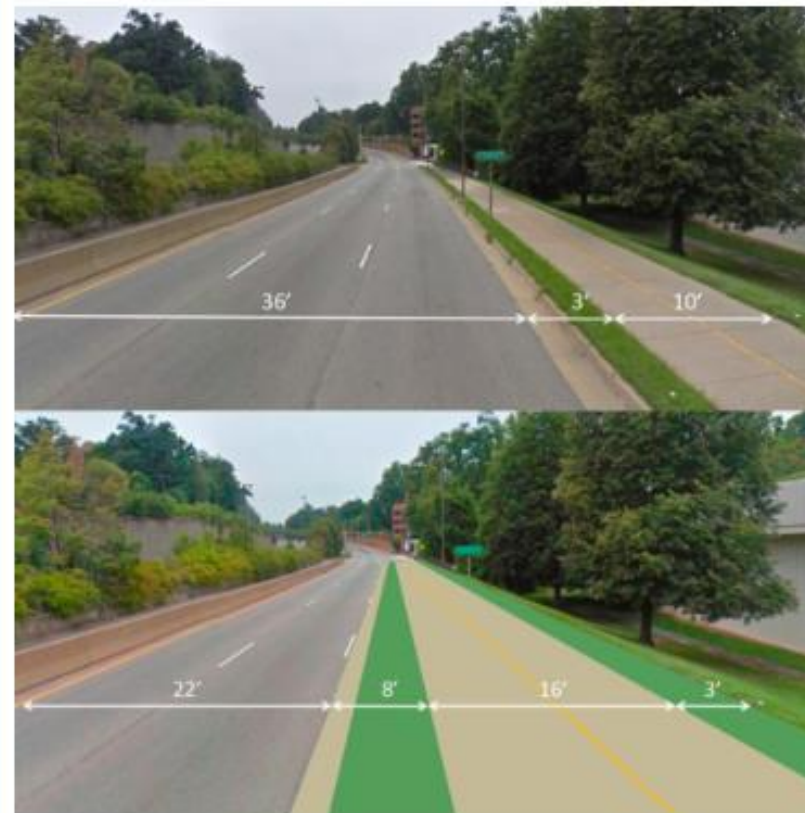


Statewide Bicycle and Pedestrian Program Newsletter Issue 12, October 2019

Welcome to the 12th edition of the Virginia Department of Transportation's (VDOT) Statewide Bicycle and Pedestrian Program e-mail newsletter. This newsletter announces the Statewide Bicycle and Pedestrian Advisory Committee meetings and provide updates on other bicycle and pedestrian activities. Contact information can be found on the website or at the bottom of each newsletter. Feel free to [e-mail](#) any information or photos you'd like included in future newsletters. For more information visit Virginia's [Statewide Bicycling and Pedestrian Program webpage](#) which includes maps, laws and safety tips, and information on places to travel.

Please share this newsletter with others who can [use this link to add their e-mail address](#) to the distribution list.

If you do not see images please click "Display Images" in your e-mail client.



Part of the Custis Trail has been widened!

About a quarter-mile of the Custis Trail along southbound Lee Highway (Route

Bicycle and Pedestrian Advisory Committee



Contact Information:

John Bolecek

Statewide Bicycle and Pedestrian Planner

John.Bolecek@vdot.Virginia.gov

804-371-4869