

# Richmond Regional Park & Ride Investment Strategy

RRTPO TAC Briefing

October 8, 2019

# Requested Action from TAC

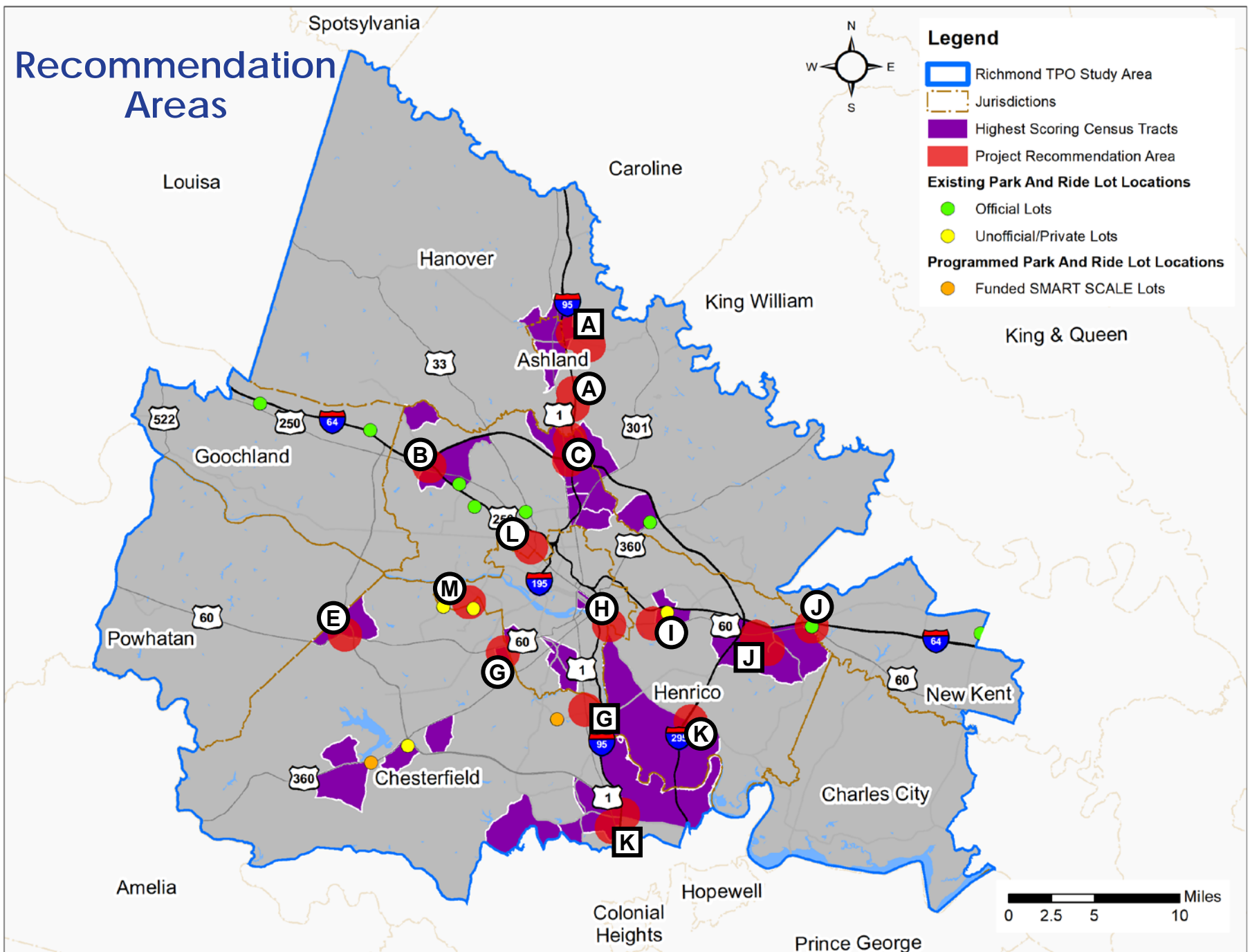
Recommendation of the 2019 Richmond Regional Park and Ride (P&R) Investment Strategy Study to the Richmond Regional Transportation Planning Organization (RRTPO) policy board for review and adoption at the December 5, 2019 RRTPO meeting.

# Project Scope

- Existing Conditions
- Needs Evaluation
- Project Recommendations
- Implementation Strategy
- Funding Needs and Potential Funding Sources

# Project Recommendations

# Recommendation Areas



# Recommended Lot Sizes

	Project Recommendation Area	Parking Spaces	Lot Area (Acres)
Ⓐ	I-95 at Lewistown Road near Lakeridge Parkway	200	1.4
Ⓐ	I-95 at Route 54 east of interchange	200	1.4
Ⓑ	I-64 at I-295 in Short Pump	320	2.2
Ⓒ	I-95 at I-295 near Virginia Center Commons	380	2.6
Ⓔ	US 60 at Route 288 near Westchester Commons	70	0.5
Ⓖ	Chippenham Parkway at Midlothian Turnpike	330	2.3
Ⓖ	Chippenham Parkway at US 1/US 301	270	1.9
Ⓗ	Eastern Pulse Terminus	130	0.9
Ⓘ	I-64 at S. Laburnum Avenue near US 60	120	0.8
Ⓙ	Bottoms Bridge	90*	0.6
Ⓙ	I-295 at US 60 near Technology Boulevard/Elko Road	120*	0.8
Ⓚ	I-95 at Route 10	250	1.7
Ⓚ	I-295 at Route 5	50	0.3
Ⓛ	Western Pulse Terminus	290	2.0
Ⓜ	Huguenot Road/Forest Hill Avenue/Chippenham Parkway	130	0.9

\*Note: The recommended spaces for the project recommendation areas in Needs Area J are in addition to the existing 40 spaces at the Bottoms Bridge lot.

# Unit Cost Ranges for Park and Ride Projects

Low Unit Cost	High Unit Costs
Typical Features/Amenities at Park and Ride Lot	
<ul style="list-style-type: none"><li>▪ Lower-density lot</li><li>▪ Minimal earthwork required</li><li>▪ Minimal amenities</li><li>▪ No transit service</li></ul>	<ul style="list-style-type: none"><li>▪ Higher-density lot</li><li>▪ More significant earthwork required</li><li>▪ Greater number of amenities</li><li>▪ Transit service</li></ul>
Per Space Unit Cost	
\$9,500	\$21,000
Per space unit costs include PE, construction, lighting/landscaping, and earthwork	
Per Lot Unit Cost	
\$180,000	\$330,000
Per lot unit costs are in addition to per space costs and include stormwater management and electric charging	
Note: Costs reported in 2019 dollars.	

# Recommended Lot Cost Estimates

	Project Recommendation Area	Low Cost	High Cost
Ⓐ	I-95 at Lewistown Road near Lakeridge Parkway	\$2.06M	\$4.53M
Ⓐ	I-95 at Route 54 east of interchange	\$2.06M	\$4.53M
Ⓑ	I-64 at I-295 in Short Pump	\$3.19M	\$7.05M
Ⓒ	I-95 at I-295 near Virginia Center Commons	\$3.76M	\$8.31M
Ⓔ	US 60 at Route 288 near Westchester Commons	\$0.84M	\$1.80M
Ⓖ	Chippenham Parkway at Midlothian Turnpike	\$3.29M	\$7.26M
Ⓖ	Chippenham Parkway at US 1/US 301	\$2.72M	\$6.00M
Ⓗ	Eastern Pulse Terminus	\$1.40M	\$3.06M
Ⓘ	I-64 at S. Laburnum Avenue near US 60	\$1.31M	\$2.85M
Ⓙ	Bottoms Bridge	\$1.03M	\$2.22M
Ⓙ	I-295 at US 60 near Technology Boulevard/Elko Road	\$1.31M	\$2.85M
Ⓚ	I-95 at Route 10	\$2.54M	\$5.58M
Ⓚ	I-295 at Route 5	\$0.65M	\$1.38M
Ⓛ	Western Pulse Terminus	\$2.91M	\$6.42M
Ⓜ	Huguenot Road/Forest Hill Avenue/Chippenham Parkway	\$1.40M	\$3.06M

# Implementation Strategy

# Implementation Activities



## Agreements

- Site Identification
- Formal Agreements or Leases



## Planning, Design & Construction

- Site Identification
- Planning & Design
- Construction



## Marketing

- Develop Strategy
- Targeted Outreach

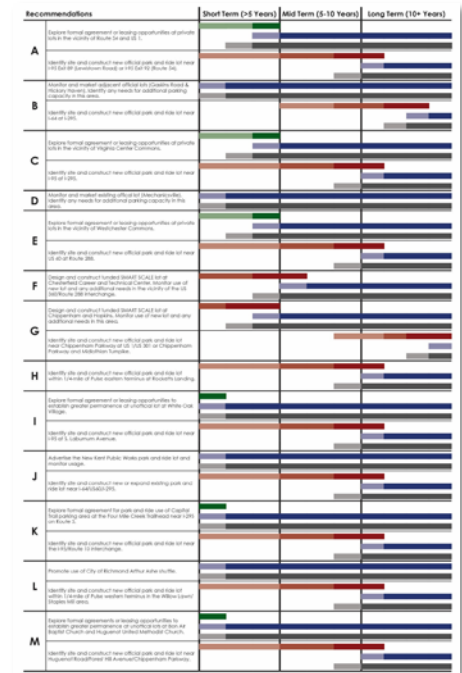


## Monitoring

- Develop Strategy
- Inspection & Evaluation

# Implementation Schedule

- Some activities can begin in the short term (< 5 years)
  - Formal Agreements
  - Site Identification
  - Monitoring & Marketing Existing Lots
- Design and construction of new lots can be completed in the mid-term (5-10 years) or long-term (10+ years) timeframes
  - Timing dependent on land acquisition and ability to secure funding



# Roles and Responsibilities



## Agreements

- Depending on parties involved in agreement, **Localities**, **GRTC**, and/or **VDOT** lead identification of sites and negotiation of formal agreements and leases
- **RRTPO** and **PlanRVA** support through development of regional strategy
- **Private Sector Partners** support through coordination with public stakeholders

# Roles and Responsibilities



## Planning, Design & Construction

- Depending on lot owner, **Localities**, **GRTC**, and/or **VDOT** lead or support identification of sites and planning, design, and construction of new or expanded lots
- **RRTPO** and **PlanRVA** support through development of regional strategy
- **RideFinders** supports identification of sites at vanpool origins
- **DRPT** supports in conjunction with transit and vanpool services
- **Private Sector** leads or supports in accordance with development proffers

# Roles and Responsibilities



## Marketing

- Depending on lot owner, **Localities**, **GRTC**, and/or **VDOT** lead development and implementation of marketing strategy
- **RideFinders** leads implementation of marketing strategy for lots that accommodate vanpool services
- **RRTPO** and **PlanRVA** lead development and implementation of regional marketing strategy
- **VDOT** leads development and implementation of statewide marketing strategy
- **Private Sector** supports in accordance with leases or agreements
- **Employers** lead effort for advertising and incentivizing employee use of lots

# Roles and Responsibilities



## Monitoring

- Depending on lot owner, **Localities**, **GRTC**, and/or **VDOT** lead development of monitoring strategy and inspection/evaluation
- **RideFinders** supports development of monitoring strategy at lots that accommodate vanpool services
- **RRTPO** and **PlanRVA** lead development of regional monitoring strategy and regional evaluation efforts
- **VDOT** leads development of statewide monitoring strategy and statewide inspection/evaluation efforts
- **Private Sector** supports in accordance with leases or agreements

# Potential Funding Sources

# Eligible Uses of Funding Sources

Funding Sources		Planning	Design	Construction	Maintenance	Monitoring	Marketing	Minor Improvements	Transit Improvements	Leases
Federal	Regional Surface Transportation Block Grant (RSTBG) Program	✓	✓	✓	✓	✓	✓	✓	✓	
	Congestion Mitigation and Air Quality (CMAQ) Improvement Program	✓	✓	✓	✓	✓	✓	✓	✓	
	Better Utilizing Investments to Leverage Development (BUILD) Grants	✓	✓	✓					✓	
	Transportation Alternatives Set-Aside							✓	✓	
	FTA 5307 Urbanized Area Formula								✓	
	FTA 5309, Bus and Bus Related Equipment and Facilities								✓	
State	SMART SCALE	✓	✓	✓					✓	
	Revenue Sharing	✓	✓	✓					✓	
	VDOT District Maintenance Funds				✓					
	DRPT Capital Assistance Funds	✓	✓	✓					✓	
	Secondary Six-Year Plan	✓	✓	✓				✓	✓	
Local	Local General Funds	✓	✓	✓	✓	✓	✓	✓	✓	✓
	Proffers	✓	✓	✓	✓	✓	✓	✓	✓	✓
	Transportation Service Districts	✓	✓	✓	✓	✓	✓	✓	✓	

# Eligible Funding Recipients

Funding Sources		Localities	GRTC	PlanRVA	VDOT	DRPT
Federal	Regional Surface Transportation Block Grant (RSTBG) Program	✓			✓	✓
	Congestion Mitigation and Air Quality (CMAQ) Improvement Program	✓			✓	✓
	Better Utilizing Investments to Leverage Development (BUILD) Grants	✓	✓	✓	✓	✓
	Transportation Alternatives Set-Aside	✓	✓	✓	✓	✓
	FTA 5307 Urbanized Area Formula		✓			
	FTA 5309, Bus and Bus Related Equipment and Facilities		✓			
State	SMART SCALE	✓	✓	✓		
	Revenue Sharing	✓			✓	
	VDOT District Maintenance Funds				✓	
	DRPT Capital Assistance Funds	✓	✓			✓
	Secondary Six-Year Plan	✓				
Local	Local General Funds	✓				
	Proffers	✓				
	Transportation Service Districts	✓				

# Next Steps

- Seek adoption of this study by TPO Policy Board (December)
- Take steps to incorporate strategy into *plan2045* (Long Range Transportation Plan) and state plans
- Steps toward implementation can start immediately
  - Identify sites and initiate formal agreements with private lot owners
  - Identify sites for new lot construction
  - Monitor use and conditions of existing lots
  - Develop and implement marketing strategies to promote existing lots
  - Identify and secure funding
- Continue cooperation and collaboration of regional stakeholders to prioritize and push projects forward
- Continually update regional and state planning efforts as projects are implemented

# Story Map Preview

