

Pathways to the Future: 2025-2030

Regional Strategic Vision:

This Strategic Plan covers the area within Virginia’s planning district #15, comprised of the Town of Ashland, the City of Richmond, and the Counties of Charles City, Chesterfield, Goochland, Hanover, Henrico, New Kent, and Powhatan. This region has a deep and complex history, a beautiful landscape threaded with rivers and communities of many kinds, and within them, the people who choose to live, work, or travel here.

To serve this region and its people, the Commission has identified a Vision for the future that it seeks to achieve through regional planning activities and coordinated and collaborative efforts.

The following five interconnected themes together constitute our Vision Statement for the region.



- **Strategic and Resilient Infrastructure.** A region with infrastructure and systems designed and maintained to protect and enhance individual and community health and well-being.



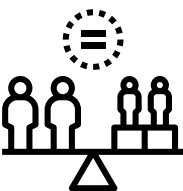
- **A Healthy Environment.** A region with thriving ecosystems - healthy watersheds, clean air, fruitful working lands, flourishing habitats, and communities that are located and planned in ways that recognize the connections between environmental health and human health and well-being.



- **Attainable Housing.** A region with diverse housing stock that makes attainable housing options for everyone that are safe, comfortable, resource-efficient, and built in coordination with available or planned infrastructure and services.



- **A Strong Economy.** A region with a diverse and resilient economic base, an educated and skilled workforce, employment that enables workers to meet their family needs, and communities with the physical, structural and social conditions to support and attract employers, workers and visitors.



- **Opportunity and Choice for Everyone.** A region that engages and collaborates with all voices and creates pathways to success through access to jobs, housing, infrastructure and services, quality education, a healthy environment, and other elements that allow all individuals and families to thrive.



Pathways to the Future: 2025-2030 Regional Strategic Vision:

The Commission will work together to plan for achieving this Vision by compiling, updating, or developing regional “core” plan documents addressing the key planning areas outlined in the Code of Virginia (transportation, housing, economic development, and environmental management) and others identified as priorities for the region. Core plans developed by PlanRVA will use data to depict the region's existing conditions and analyze them to explore options for moving forward.

The information and analysis in the core plans will inform regional goals, objectives, and strategies, which together will form a more detailed map for achieving our Vision. Input from the community to each core plan developed by PlanRVA will guide the process.

Over time, and as the region moves forward, the Commission will track progress in achieving the regional vision and goals with emphasis on the core plans developed by PlanRVA.

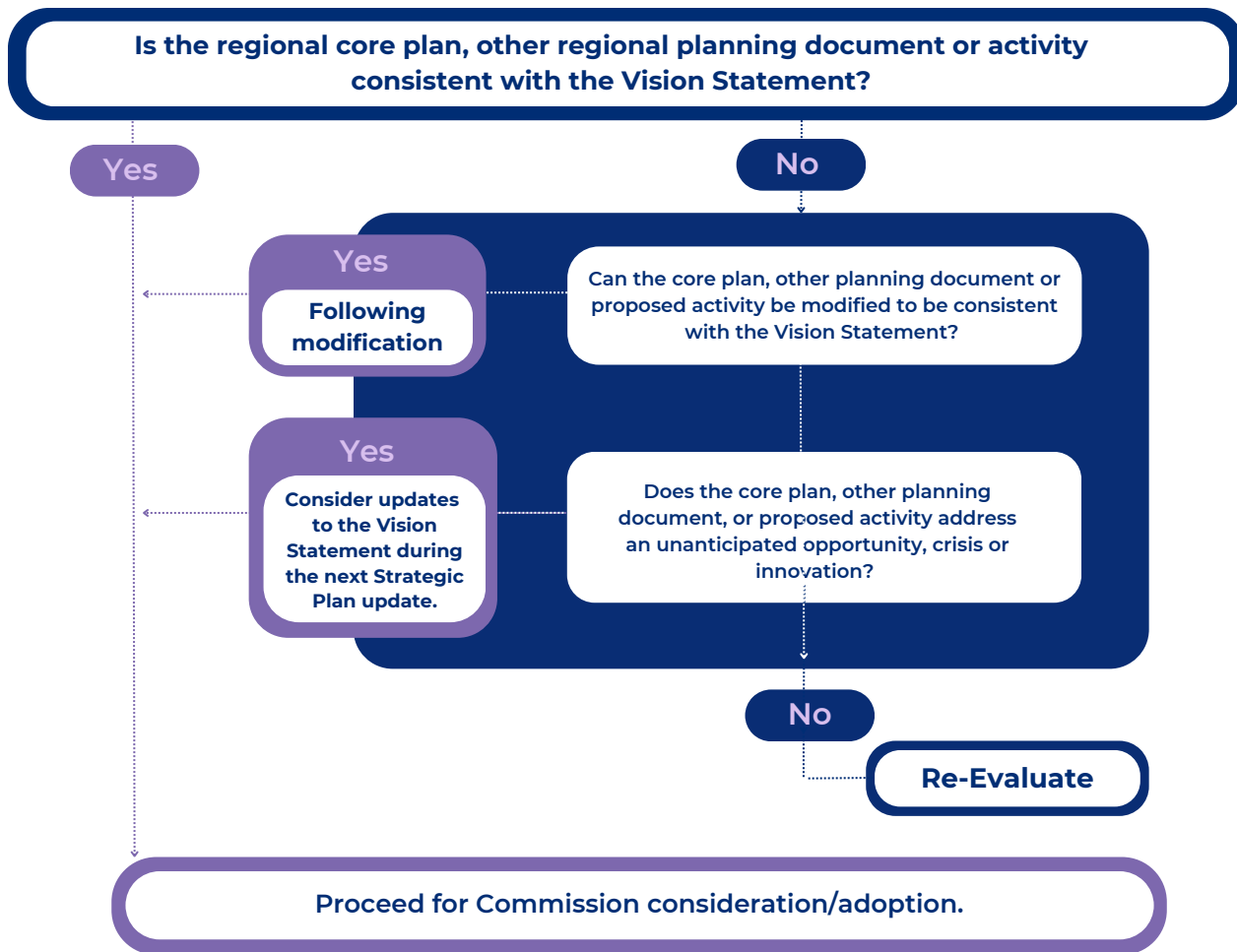
Each year the Commission will:

- Review and adopt updated versions of the core plans developed by PlanRVA, as needed, and review the status of each plan (preparing to update, update in progress, implementation, etc.).
 - Plan review and adoption will include a review of the community input summaries in each plan.
 - Plan review and adoption will include consideration of how the specific plan goals are informed and will feed into the overall vision for the region.
- Review progress on and guide upcoming regional planning and programmatic activities as PlanRVA’s core plans are implemented.
- Develop/update (if needed) metrics pertinent to the vision's elements and review the data results for these metrics.

Pathways to the Future: 2025-2030

Regional Strategic Vision:

Upon adoption of this Strategic Plan, the Commission will consider the Vision in its deliberations and actions, as illustrated below.



In developing the Vision, plans and processes, the Commission acknowledges that plans and progress at the regional level both feed into and draw upon the work of each member locality and of many partners across the region.

As work aligned with the regional Vision takes place across the localities and in coordination with regional partners in fiscal years 2025-2030, PlanRVA will continue to fulfill its supporting role to convene representatives to build relationships and capacity across the region; provide technical assistance; serve as a liaison between local, state and federal governments; and implement services when requested by members.