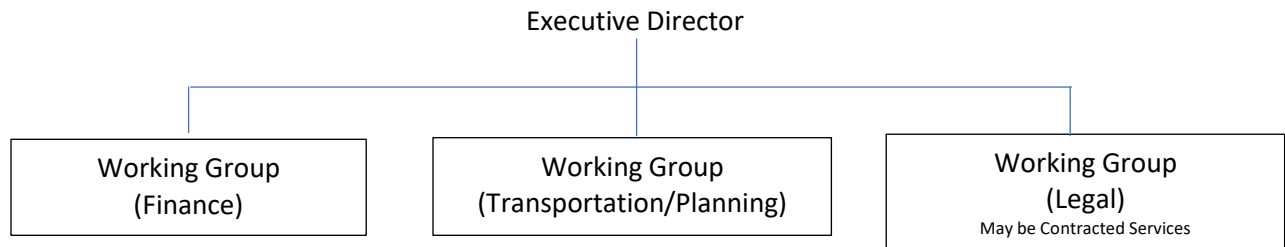
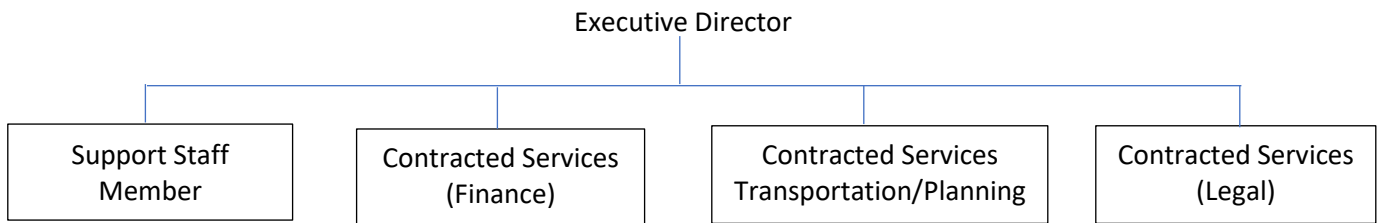


Recommended Staffing Phases for CVTA

Phase 1 (Option 1): Hire an Executive Director and use working groups made up of partners to begin the work. PlanRVA to provide administrative support as needed.



Phase 2 (Option 3): Hire Executive Director and one Support Staff, and all other services may be contracted out.



Phase 3 (Option 2): Hire Executive Director and three key core staff to perform the work. Continue to use contracted legal services as needed.

