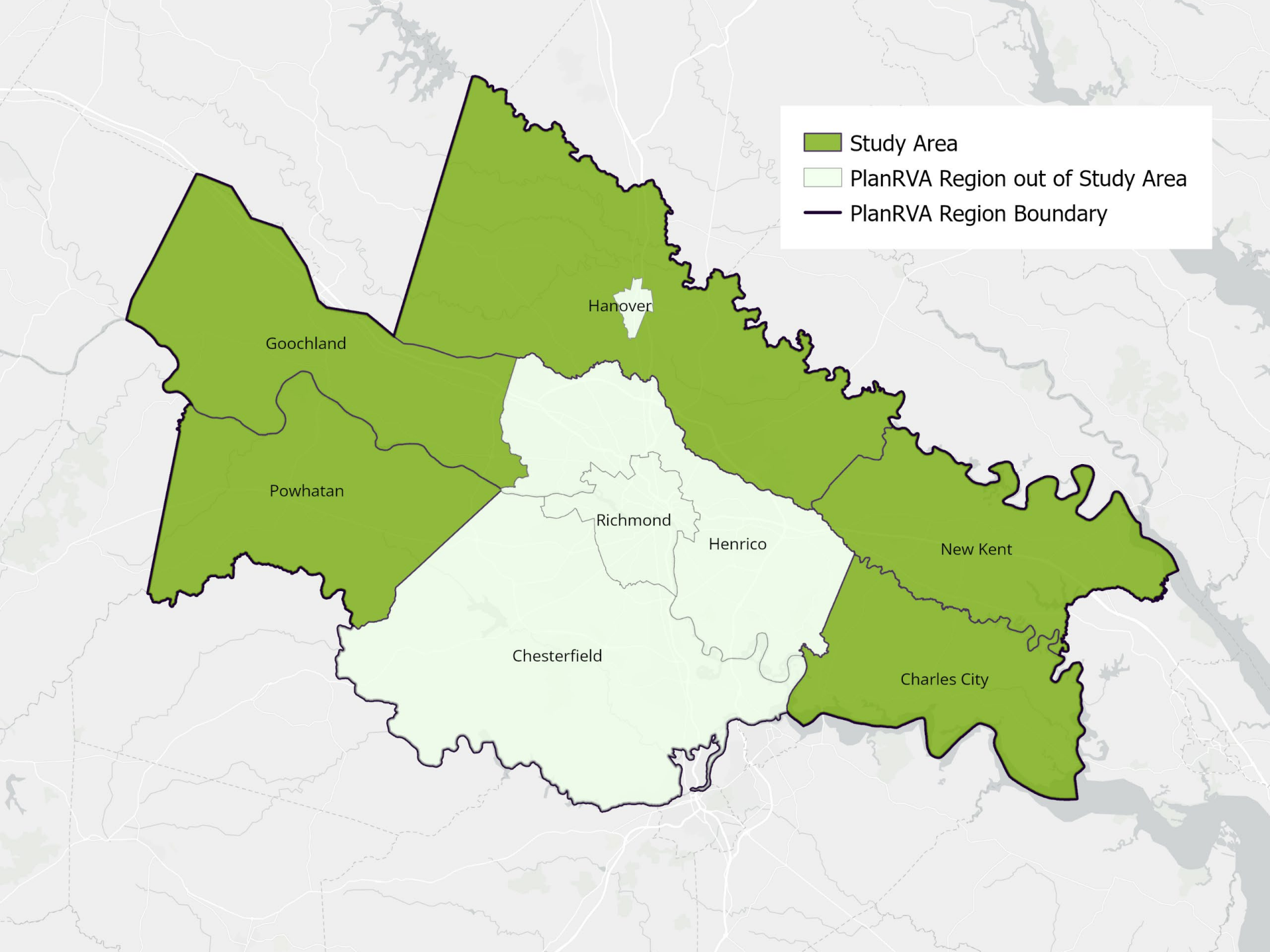


Rural Transportation Analysis

Technical Advisory
Committee
September 10, 2024

Background

- Policy Board mandate to study, included in FY25 UPWP
- **Goal** - Understand and meet public transportation needs of rural communities
- Develop different options to meet the needs
- Recommend solutions that are practical, affordable, and sustainable



Study Area

PlanRVA Region out of Study Area

PlanRVA Region Boundary

Hanover

Goochland

Powhatan

Richmond

Henrico

New Kent

Chesterfield

Charles City

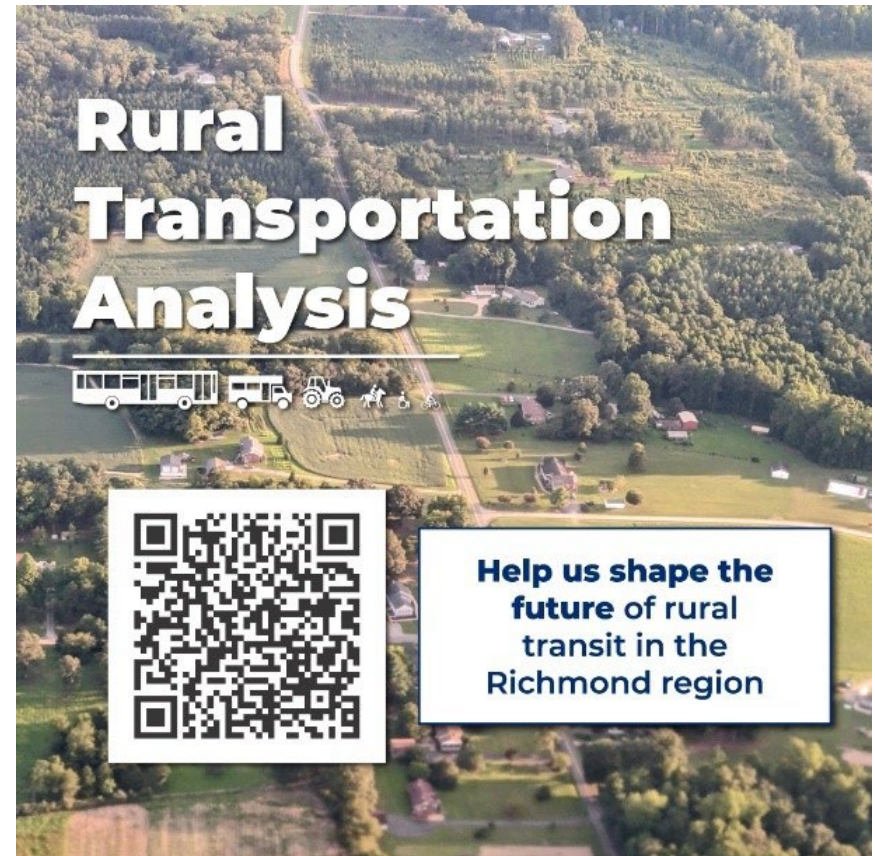
Current Project Schedule

Task	June					July				August				September			
	2	9	16	23	30	7	14	21	28	4	11	18	25	1	8	15	22
Assess Existing Conditions	[Yellow bar]																
Define Existing Needs	[Light Green bar]																
Public Outreach	[White bar]					[Green bar]											
Identify Alternatives	[White bar]																
Operational Analysis	[White bar]																
Develop Recommendations	[White bar]																

Task	October					November				December					January			
	29	6	13	20	27	3	10	17	24	1	8	15	22	29	5	12	19	26
Assess Existing Conditions	[White bar]																	
Define Existing Needs	[Light Green bar]									[White bar]								
Public Outreach	[Green bar]									[White bar]								
Identify Alternatives	[White bar]					[Blue bar]									[White bar]			
Operational Analysis	[White bar]									[Dark Blue bar]								
Develop Recommendations	[White bar]										[Purple bar]							

Current Public Engagement Efforts

- Compiling input from previous studies
- In-person events in each locality
- Launched new engagement portal with project page
- Needs survey currently underway

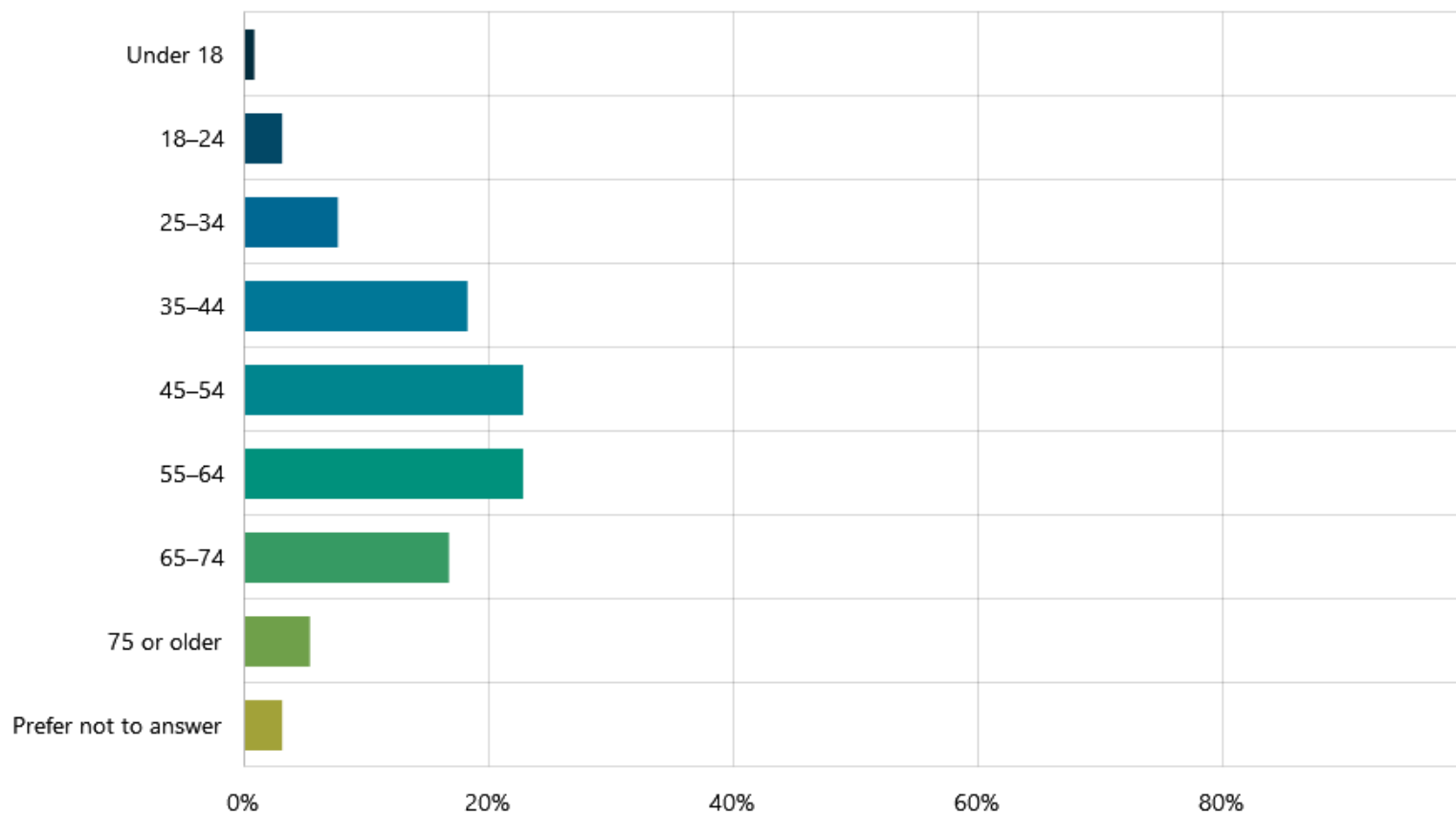


Survey Responses through 9/8

- 140 surveys completed
- 460 unique site visitors
- Survey and current outreach effort continuing through November
- Please share as appropriate!

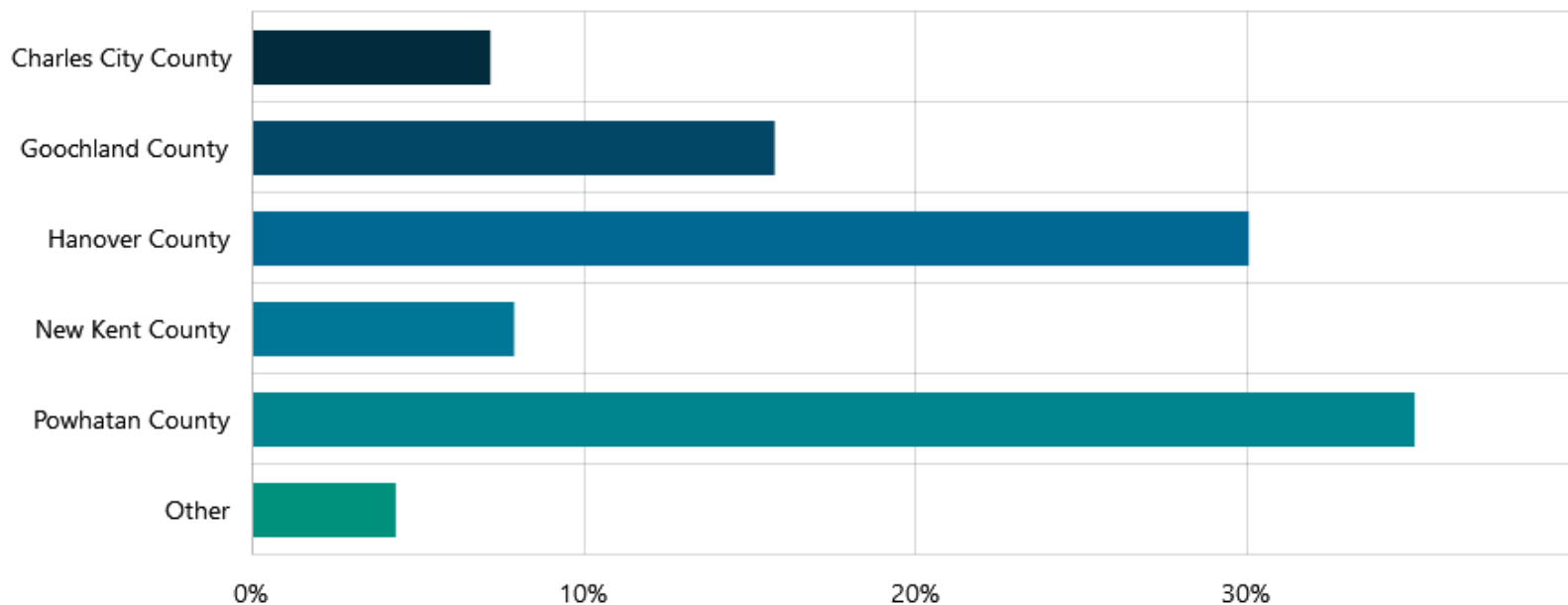


Survey Responses through 9/8



Survey Responses through 9/8

Where do you live?



Questions?

Project Manager: Dan Motta (dmotta@planrva.org)