



Proposed New Service

Route 111 *Route 1/Falling Creek/Tyler*

Public Meeting:

October 30, 2019

Overview

- Background: How we got here
- Service
- Stops Locations
- Infrastructure and Amenities
- Connections
- Next Steps

Service Information

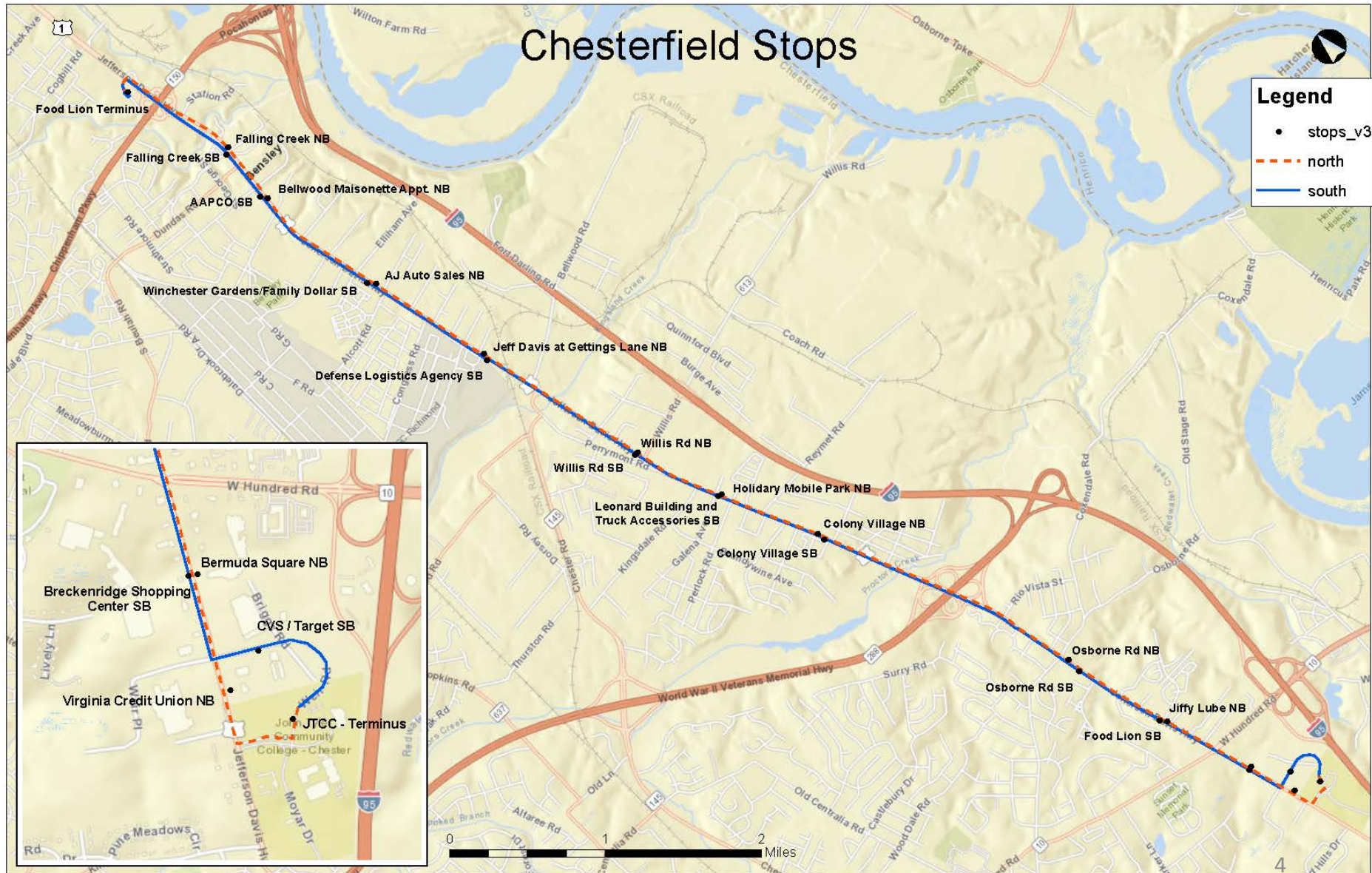
Projected Start Date: March 2020

Service Area: Route 1 from Food Lion North of Chippenham to John Tyler Community College

Route Length: 7.6 miles

	Weekday	Saturday	Sunday
Frequency	30 min	30 min	-
Service Span	5am-7pm	7am-7pm	No Service
Number of Trips	North - 29 South - 28	North - 25 South - 24	-
Base Fare	\$1.50	\$1.50	-

Route Alignment and Stops



Northbound	Southbound
Falling Creek Apartments	New Testament Church
Bellwood Maisonettes	AAPCO
AJ Auto Sales	Winchester Green/Family Dollar
Holiday Mobile Park	Leonard Building & Truck Accessories
Nautical Marine	Colony Village Apartments
Gettings Lane	Defense Logistics
Willis Road, 7-11	Willis Road, La Michoacana
Osborne Road, Wawa	Osborne Road, AutoZone
Bermuda Crossroads, Jiffy Lube	Bermuda Crossroads, O'Charley's
Bermuda Crossing, Captain D's	Breckenridge, Taco Bell
	Weir Road, CVS
	John Tyler Community College
Virginia Credit Union	

10' 5"



Brand Logo
At 10' 5" tall, the brand logo provides a visual of the bus stop to be identified from far away.



Flag
The flag is a unique identifier for each stop. It includes the individual stop number.



Blade
The blade lists the route number, name and days of service at each stop. Clearance of 7' provides an obstruction-free walkway.

7'



At-Stop Panel
The at-stop panel provides a map of the route, identifying stops and the end of the line. Approximate departure times are listed on the bottom half.
**This is located at select timepoints (about 10% of stops).*

4'



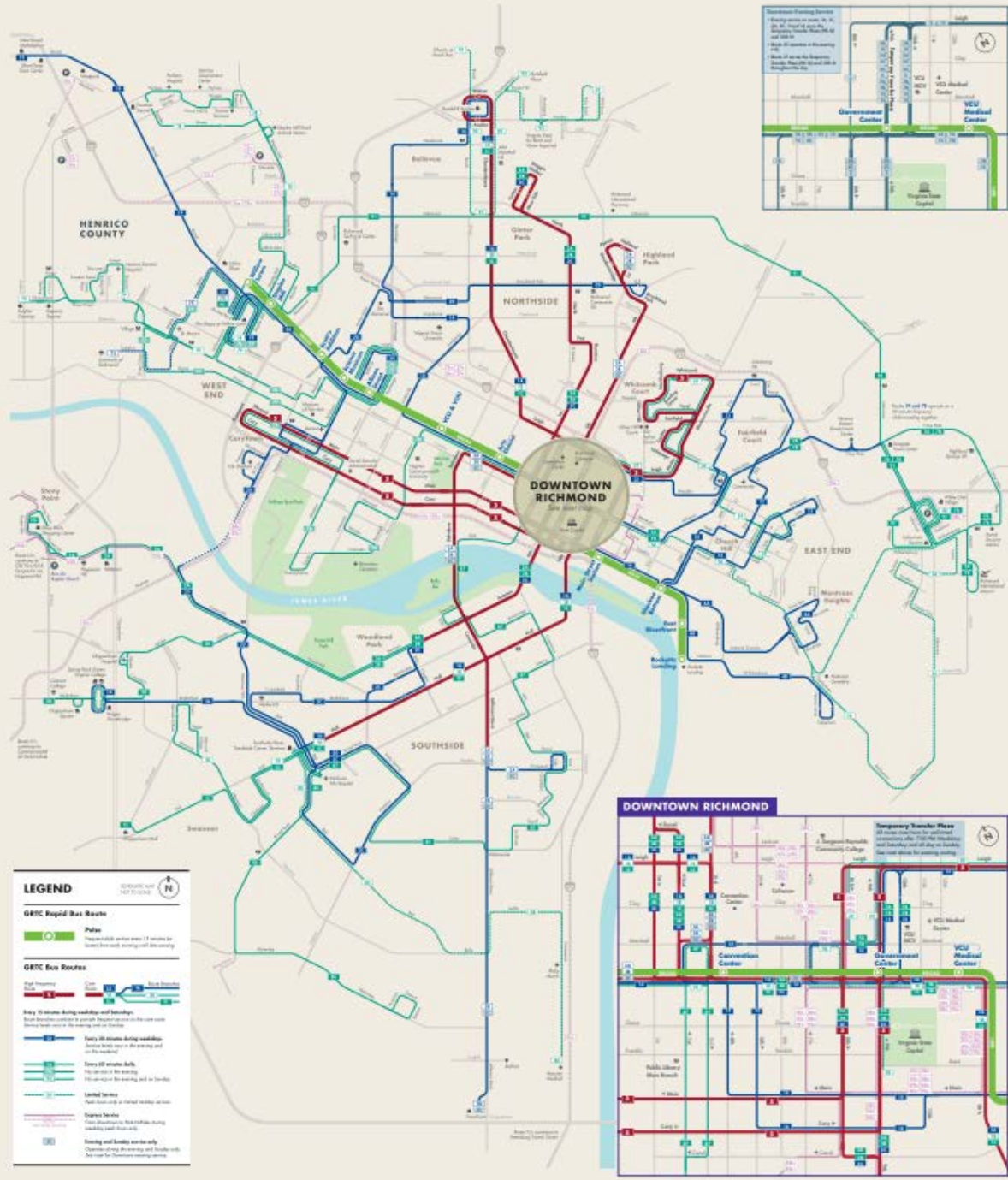
Braille
The braille sign is placed at a standard height of 3' 6" for consistent accessibility.

3' 6"

Stop Improvements and Amenities



*Design Examples



LEGEND

ORBC Rapid Bus Routes

Lines

- Thick solid green line with a circle: Rapid Bus route

ORBC Bus Routes

- Dashed green line with a circle: Bus route

Key: 15 minutes during weekdays and Saturdays.
 Some bus routes are in service 24 hours a day. Some routes are in service only during the morning and evening rush hours.

- Thick solid green line with a circle: Every 15 minutes during weekdays. Service every 15 minutes during the morning and evening rush hours.
- Thick dashed green line with a circle: Every 30 minutes during weekdays. Service every 30 minutes during the morning and evening rush hours.
- Thin solid green line with a circle: Limited Service. Service every 15 minutes during weekdays.
- Thin dashed green line with a circle: Express Service. Service every 15 minutes during weekdays and Saturdays.
- Thin solid green line with a circle: Limited and Express Service. Service every 15 minutes during weekdays and Saturdays.

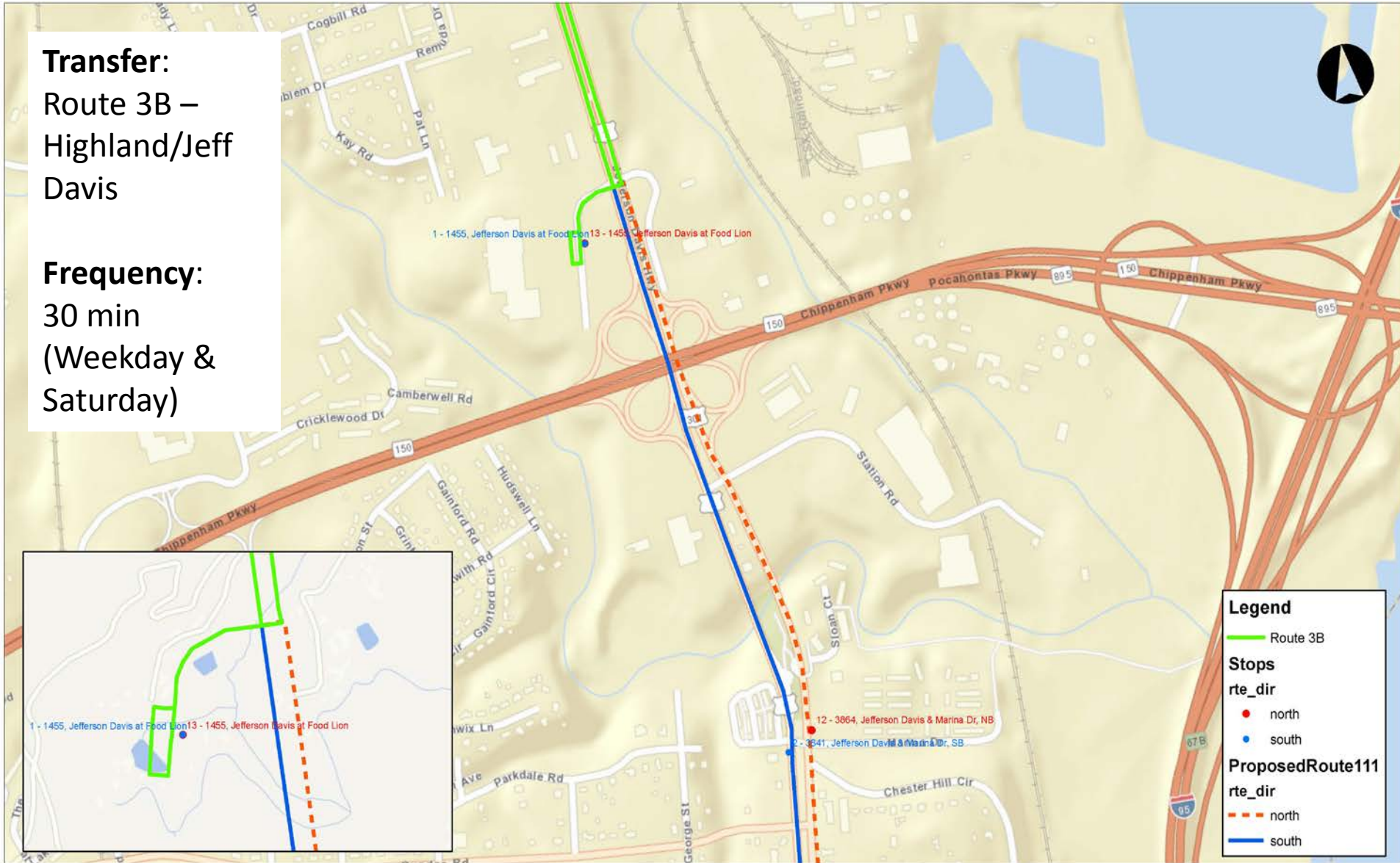
DOWNTOWN RICHMOND

Temporary Transfer Place
 All buses will stop for an extended period of time at the Temporary Transfer Place during the morning and evening rush hours. Buses will stop for an extended period of time at the Temporary Transfer Place for an extended period of time.

System Connections

Transfer:
Route 3B –
Highland/Jeff
Davis

Frequency:
30 min
(Weekday &
Saturday)



Legend

Route 3B
— (green line)

Stops

rte_dir

- north (red dot)
- south (blue dot)

Proposed Route 111

rte_dir

- - - north (dashed orange line)
- south (solid blue line)

Fare Options

GRTC FARE GUIDE					
REDUCED FARE IS ONLY AVAILABLE ON LOCAL ROUTES AND THE PULSE					
FARE TYPE	LOCAL ROUTE & PULSE	LOCAL REDUCED SENIOR DISABLED MEDICARE MINOR	EXPRESS HENRICO ROUTES	PETERSBURG EXTENDED EXPRESS	EXTENDED EXPRESS CHESTERFIELD 82
ONE RIDE	\$1.50	\$0.75	\$2.00	\$3.50	\$6.00
ONE RIDE PLUS	\$1.75	—————	—————	—————	—————
ONE DAY PASS	\$3.50	\$1.75	\$4.50	\$7.00	—————
7 DAY PASS	\$17.50	\$8.25	\$22.50	\$35.00	\$65.00
30 DAY PASS	\$60.00	\$35.00	\$80.00	—————	—————

Pass Definitions:

- One Ride = a solo ride going one direction.
- One Ride Plus = one direction, requiring a connection between two buses (formerly known as a "transfer").
- One Day Pass = unlimited rides for one transit day (until the last bus runs that night)
- 7 Day Pass = unlimited rides for seven consecutive transit days (until the last bus runs the 7th night)
- 30 Day Pass = unlimited rides for 30 consecutive transit days (until the last bus runs the 30th night)

Next Steps

- Service Equity Analysis/GRTC Board Review
- Phase 1 Infrastructure Improvements
- Marketing
- Projected Start Date – March 2020

Questions

Barb Smith: smithbk@chesterfield.gov