



# Advisory Committee Meeting

January 23, 2020

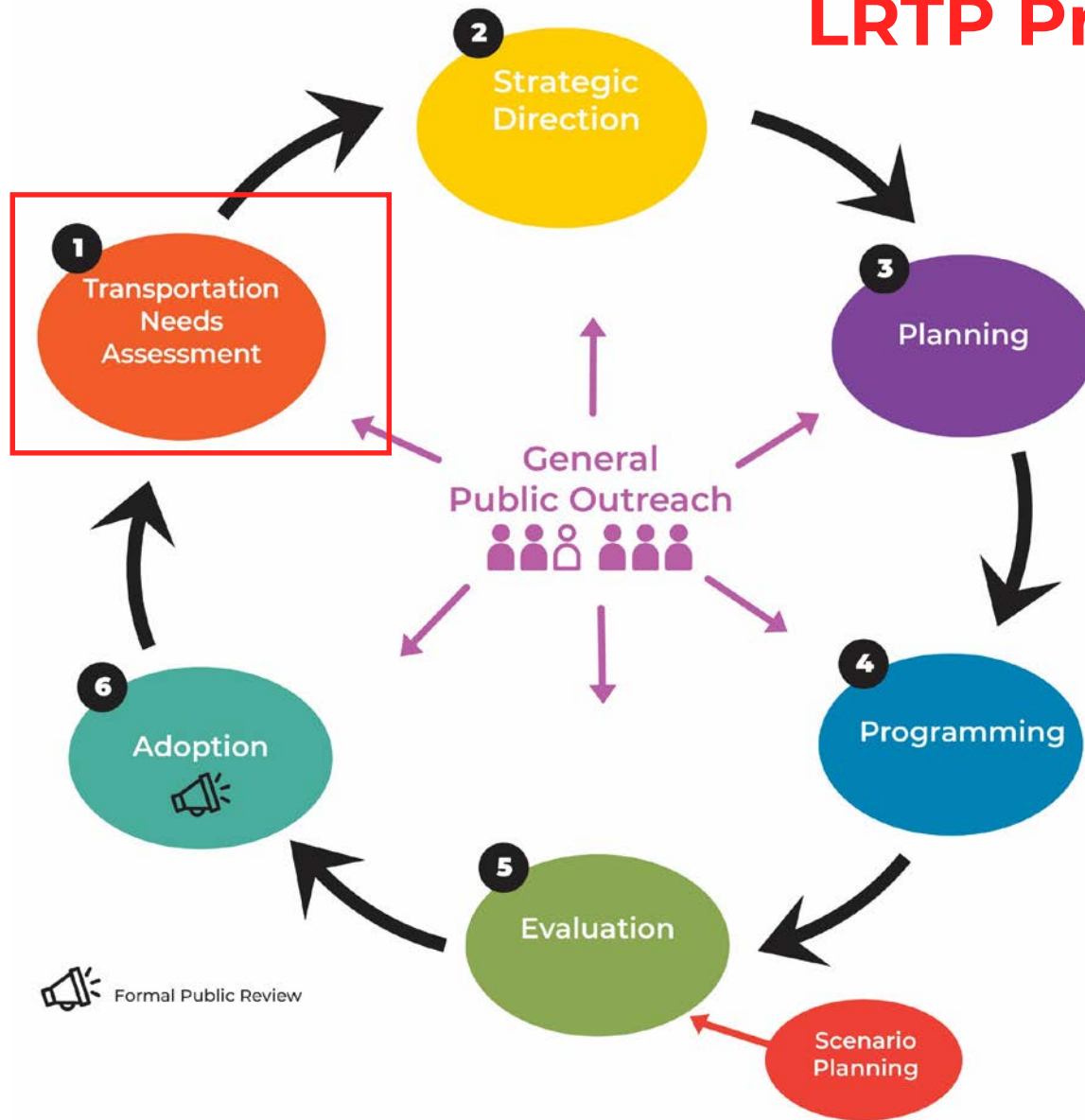
**PlanRVA**

**James River Board Room  
9211 Forest Hill Avenue, Suite 200  
Richmond, Virginia 23235**

# **L RTP Process Update**

## **Task 1: Transportation Needs Assessment**

# L RTP Process Flow



# **What are the Transportation Issues to Address?**

## **Transportation Issues and Needs Assessment**

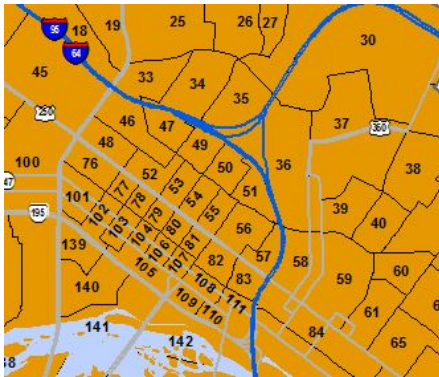
**Task 1.0 Socioeconomic Data Update and Analysis**  
Completed

**Task 1.1 Richmond/Tri-Cities Travel Demand Model Update**  
Complete by February 2020

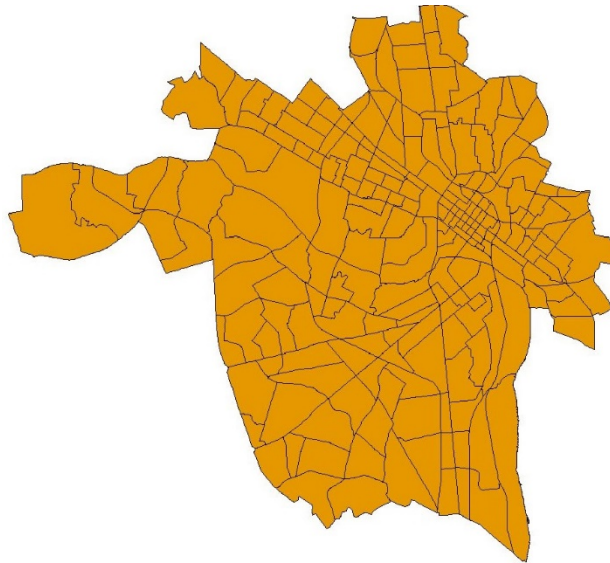
**Task 1.2 Transportation Needs Assessment**  
Ongoing – Targeted Approval by LRTP-AC by March/April

# Task 1.0 Socioeconomic Data Update and Analysis

The Socioeconomic Data provides estimates and projections of population, employment and other socioeconomic data of the Richmond Region within small geographic areas called Transportation Analysis Zones (TAZs). It is an input into the RRTPO's Regional Travel Demand Model (The RTC Model).



**TAZ Level**



**Jurisdictional Level**



**Regional Level**

# Task 1.0 Socioeconomic Data Update and Analysis

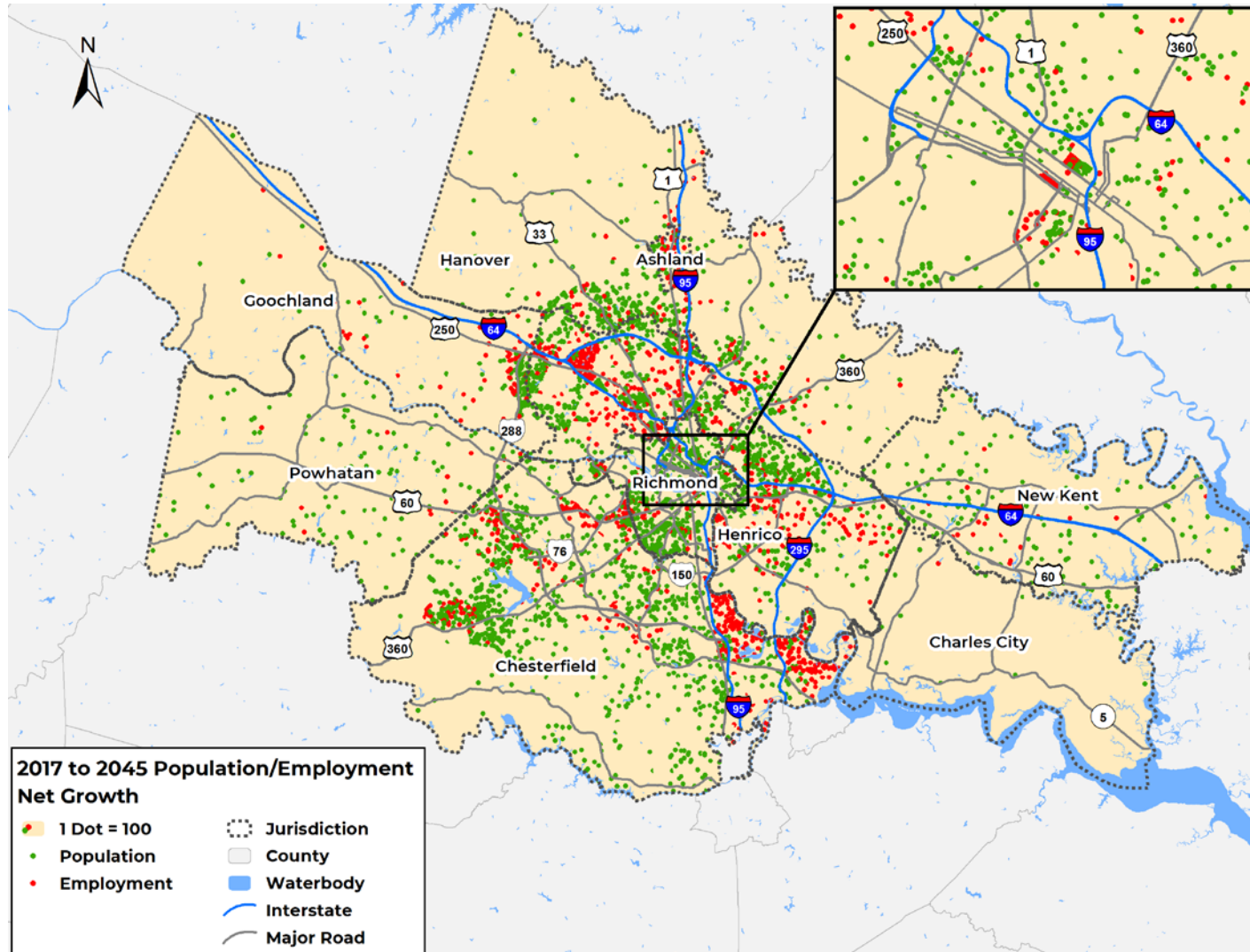
## Population

Jurisdiction	2017	2045	Total Growth Rate	Annual Growth Rate
Charles City County	7,126	8,540	19.84	0.71
Chesterfield County	340,848	437,512	28.36	1.01
Goochland County	23,536	33,738	43.35	1.55
Hanover County*	109,595	145,559	32.82	1.17
Henrico County	335,283	430,222	28.32	1.01
New Kent County	21,347	36,270	69.91	2.50
Powhatan County	29,147	41,248	41.52	1.48
Richmond City	224,798	280,141	24.62	0.88
<b>Region Total</b>	<b>1,091,680</b>	<b>1,413,230</b>	<b>29.45</b>	<b>1.05</b>

Jurisdiction	2017	2045	Total Growth Rate	Annual Growth Rate
Charles City County	1,668	1,832	9.83	0.35
Chesterfield County	131,120	177,742	35.56	1.27
Goochland County	13,966	20,507	46.84	1.67
Hanover County*	50,625	65,859	30.09	1.07
Henrico County	191,240	238,938	24.94	0.89
New Kent County	3,956	5,979	51.14	1.83
Powhatan County	6,092	7,528	23.57	0.84
Richmond City	152,044	173,089	13.84	0.49
<b>Region Total</b>	<b>550,711</b>	<b>691,474</b>	<b>25.56</b>	<b>0.91</b>

## Employment

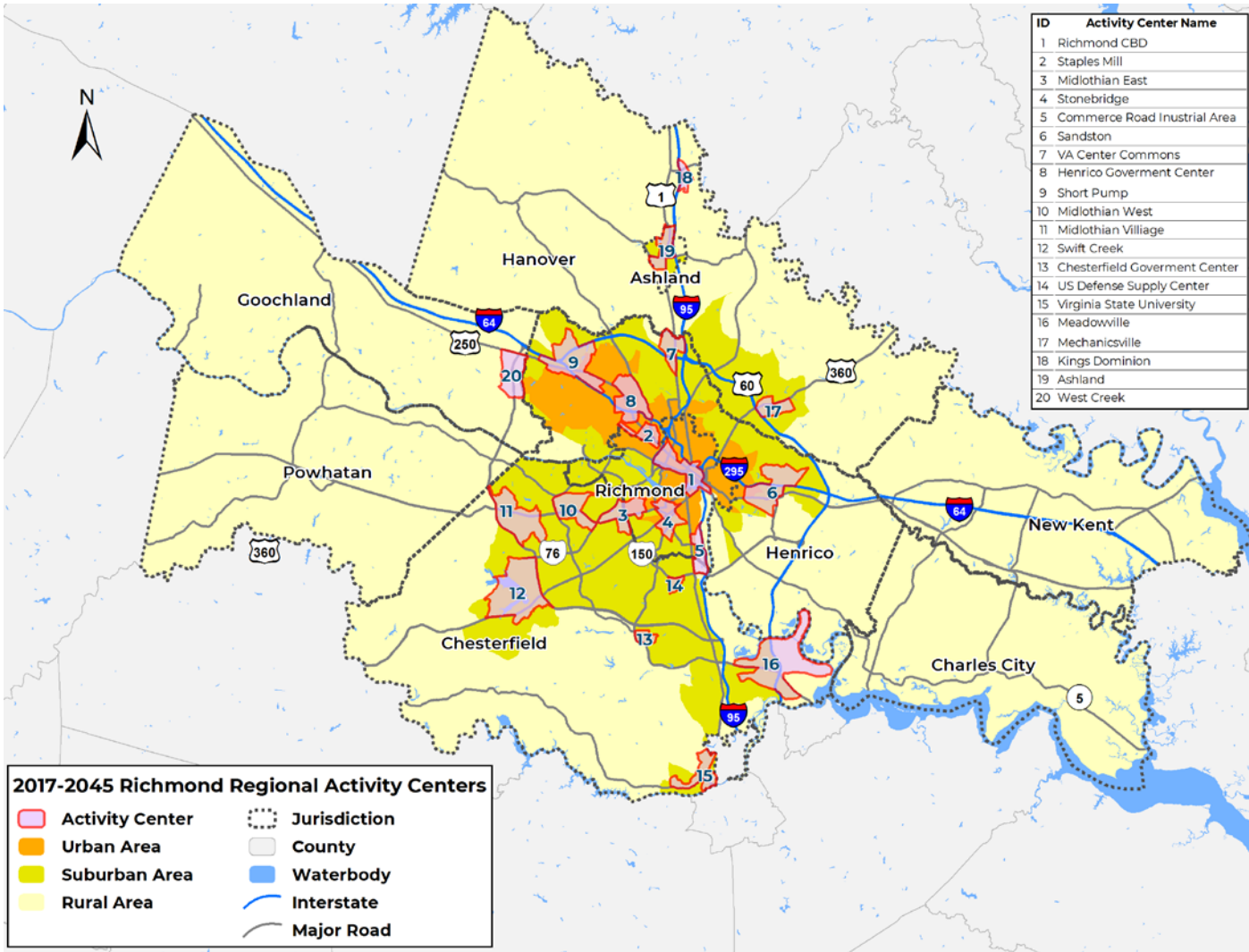
# Task 1.0 Socioeconomic Data Update and Analysis



## Population/Employment Growth Density



# Task 1.0 Socioeconomic Data Update and Analysis



## Regional Activity Centers

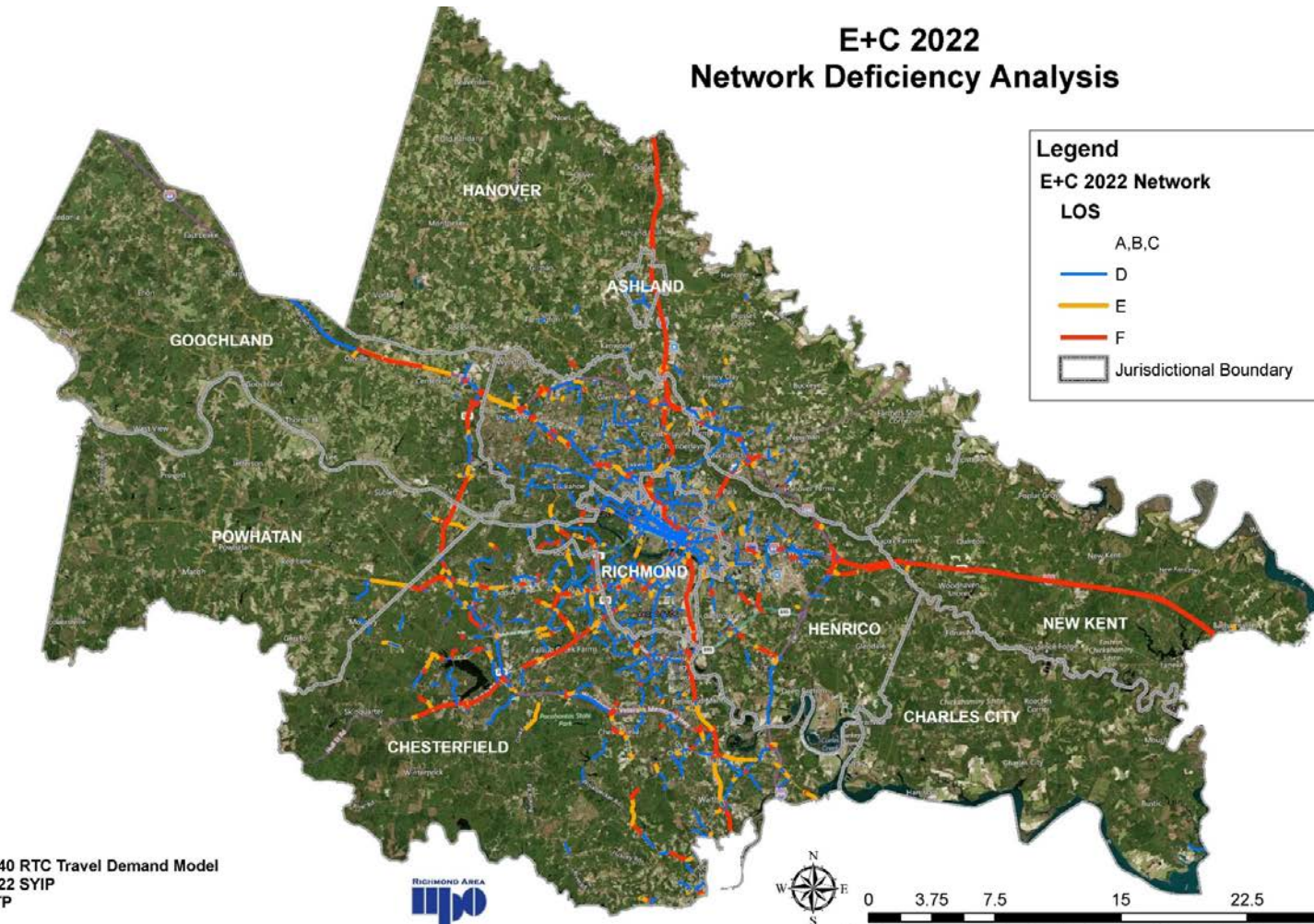
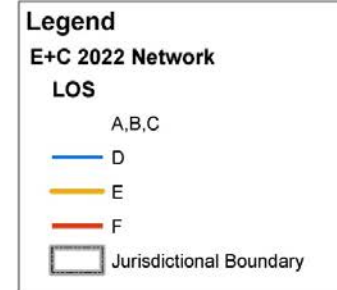


# Task 1.1 Richmond/Tri-Cities Travel Demand Model Update

- ❑ RRTPO in its capacity as the MPO maintains a Regional Travel Demand Model (RTDM), the RTC Model
- ❑ The RTC Model covers areas of whole of the Richmond Region (including rural study areas) and the Tri-Cities MPO.
- ❑ For the LRTP, the RTC model is updated to a base year of 2017 and a future year of 2045.
- ❑ The RTC model will be used to identify future needs for the highway and transit network.
- ❑ Potential Impact of Investment. Measure System Performance Measures: Volume/Capacity Ratio, Vehicles Miles Traveled, Vehicle Hours Traveled, Average Congested Speed by facility type, travel time improvements, transit ridership and accessibility improvements to major destinations.
- ❑ Impact of different land uses changes and different Investment priorities in Scenario Planning parallel process of the LRTP.

# Task 1.1 Richmond/Tri-Cities Travel Demand Model Update

## E+C 2022 Network Deficiency Analysis



Source  
2012-2040 RTC Travel Demand Model  
2017-2022 SYIP  
2040 MTP



0 3.75 7.5 15 22.5 30 Miles

© Harris Corp. Earthstar Geographics LLC Earthstar Geographics SIO © 2018 Microsoft Corporation © 2010 NAVTEQ © ANDI

# **Task 1.2 Transportation Needs Assessment**

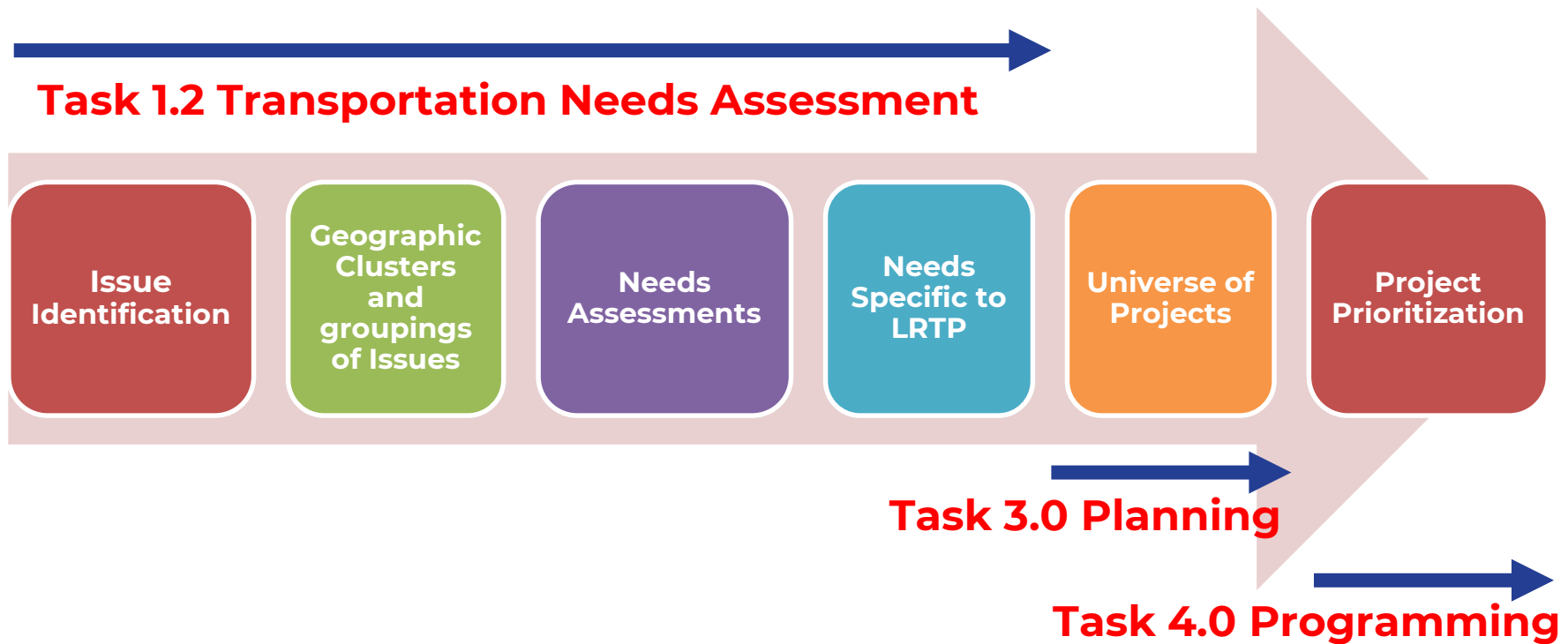
## **Identify regional and local multimodal transportation Issues based on**

- ☐ Congestion
- ☐ Safety issues
- ☐ Lack of interconnectivity
- ☐ Operational problems
- ☐ Maintenance Issues
- ☐ Inadequate roadway/transit capacity
- ☐ Accessibility
- ☐ Other issues (travel demand management, transportation system resiliency and economic development, etc.)

## **and Establish LRTP-specific Regional Transportation Needs**

# Task 1.2 Transportation Needs Assessment

## Process Flow – Issue Identification to Project Prioritization



# Task 1.2 Transportation Needs Assessment

## Transportation Issues Identification

- Staff Review of Regional and Local Plans and Studies
- ❑ Highway
  - ❑ Major Transportation Studies
  - ❑ STARS Studies
  - ❑ IJR/IMRs
  - ❑ RRTPO Congestion Management Process
  - ❑ RRTPO Bridge and Culvert Study (Ongoing)
- ❑ Transit
  - ❑ Richmond Regional Transit Vision Plan Phases I and II
  - ❑ GRTC Transit Development Plan 2017
- ❑ Bike –Ped
  - ❑ Richmond Regional Bike-Ped Plan 2020 (Ongoing)
  - ❑ Ashland To Petersburg Trail Study (Ongoing)

# Task 1.2 Transportation Needs Assessment

- ☐ Park and Ride
  - ☐ Richmond Regional Park and Ride Study 2019
- ☐ Freight and Intermodal
  - ☐ Commerce Corridor Study
  - ☐ RMT/I-95 Study (Ongoing)
- ☐ Passenger & Freight Rail
  - ☐ DC2RVA
  - ☐ State Railway Plan 2017
- ☐ Other
  - ☐ VTrans- State Multimodal Plan (Ongoing)
  - ☐ DRPT Coordinated Human Service Mobility Plan 2019
  - ☐ Richmond-Crater Hazard Mitigation Plan
  - ☐ Richmond Region Comprehensive Economic Development Strategy (CEDS)
  - ☐ Locality Comprehensive/Transportation/Small Area Plan
  - ☐ Other Applicable Plans



# Task 1.2 Transportation Needs Assessment

## Regional and Local Transportation Issues Inventory (Partial List based on Regional and Local Plans and Studies)

SN	Issue/Deficiency Description	Category	Type	Transportation Mode	Jurisdiction	Source
1	Missing Link Trail (connecting south side of Potterfield Bridge to 21st Street Tower, along the banks of the James River in the JRPS)	Interconnectivity	Construction	Active Transportation	Richmond	RRTPO Regional Bike-Ped Plan
2	Ashland to Petersburg Trail Study (regional)	Interconnectivity	Study	Active Transportation	Regionwide	Ashland to Petersburg Trail Study
3	Trolley Line Trail (regional)	Interconnectivity	Study	Active Transportation	Regionwide	Ashland to Petersburg Trail Study
4	East Coast Greenway routing (regional)	Interconnectivity	Other	Active Transportation	Regionwide	RRTPO Regional Bike-Ped Plan
5	Courthouse Road/Pocahontas State Park (not detailed in park master plan) (Connects to the Chesterfield Government Courthouse Complex)	Interconnectivity	Other	Active Transportation	Chesterfield	RRTPO Regional Bike-Ped Plan
6	James River Park/Greenways (a handful, identified in JRPS plan)	Interconnectivity	Study	Active Transportation	Richmond	RRTPO Regional Bike-Ped Plan
7	Skipwith Road/I-64 bridge repair/improvements (ADA)	Other	Other	Active Transportation	Henrico	RRTPO Regional Bike-Ped Plan
8	Pemberton Road/I-64 bridge repair/improvements (ADA)	Other	Other	Active Transportation	Henrico	RRTPO Regional Bike-Ped Plan
9	Appomattox River Trail Master Plan (trails all along the Appomattox River, both sides)	Interconnectivity	Study	Active Transportation	Multi-Jurisdiction	RRTPO Regional Bike-Ped Plan
10	Virginia Capital Trail	Interconnectivity	Other	Active Transportation	Regionwide	RRTPO Regional Bike-Ped Plan
11	Parham Road/Hungary Road Bicycle and Pedestrian Study	Safety	Study	Active Transportation	Regionwide	Ashland to Petersburg Trail Study
12	Gillies Creek Greenway (west of Stone Brewing along Gillies Creek to Oakwood Cemetery)	Interconnectivity	Study	Active Transportation	Richmond	RRTPO Regional Bike-Ped Plan
13	Nuckols Road Trail (Nuckols Rd. at Springfield headed east)	Interconnectivity	Construction	Active Transportation	Henrico	RRTPO Regional Bike-Ped Plan
14	Charles City Courthouse multiuse trail	Safety	Study	Active Transportation	Charles City	RRTPO Regional Bike-Ped Plan
15	Scotts Addition Greenway/Boulevard Trail (behind Movieland, along Science Museum)	Interconnectivity	Study	Active Transportation	Richmond	RRTPO Regional Bike-Ped Plan
16	Lakeside Community Trail (Lakeside and Park St.)	Interconnectivity	Study	Active Transportation	Henrico	Ashland to Petersburg Trail Study
17	Improved connection from Commerce Corridor to I-64 east corridor and RIC/ White Oak area	Interconnectivity	Study	Freight and Intermodal	Multi-Jurisdiction	Commerce Corridor Study

Category	Type	Transportation Mode	Jurisdiction
Accessibility	Construction	Active Transportation	Charles City
Capacity Improvements	Other	Freight and Intermodal	Chesterfield
Congestion	Policy/Program	Highway	Ashland
Interconnectivity	Study	Multimodal	Goochland
Operations/Maintenance		Other	Hanover
Other		Park and Ride	Henrico
Safety		Passenger Rail	New Kent
		System Resiliency	Powhatan
		Transit	Richmond
		Travel Demand Management	Multi-Jurisdiction
			Regionwide

# Task 1.2 Transportation Needs Assessment

## Transportation Issues Identification

### Next Steps

- LRTP-AC Input and Vetting
- Citizen Input
- RTC Model Runs
- Complete Issues Inventory
- Geographic Clusters and Groupings of Issues
- Establish LRTP-Specific Needs
- Approval of Needs: March/April

# Connect RVA 2045



## Website

[www.connectrva2045.org](http://www.connectrva2045.org)

## Contact Information

[ConnectRVA2045@planrva.org](mailto:ConnectRVA2045@planrva.org)

### Chet Parsons

[cparsons@planrva.org](mailto:cparsons@planrva.org)

### Sulabh Aryal

[saryal@planrva.org](mailto:saryal@planrva.org)