

# The James River Park Master Plan

## Draft Plan

### Active Transportation Working Group

9.10.19



**HARGREAVES**  
ASSOCIATES

# Agenda

- Public process
- Review Draft Master Plan
- Preliminary results of priority survey
- Discussion
- Next steps



# Extensive Public Process



- 9 neighborhood meetings
- 1 City-wide meeting
- Pop up meetings and additional outreach
- Over 2,300 survey responses!



# Master Plan Outline

- Welcome
- Public Engagement
- Operations and Maintenance
- Natural Resources
- Transportation and Access
- Trails and Greenways
- Water-based Activities
- Park Buildings
- Park Activities
- Park Expansion
- Focus Areas





# Welcome to James River Park

17 JULY 2019

## JAMES RIVER PARK SYSTEM MASTER PLAN



Conserve the James River Park System as a sustaining natural counterpoint to urban life, balancing both active recreation and passive enjoyment of the Park while preserving and protecting the natural environment

# Goals and Objectives

## Equitable Access

- **Facilitate** greater access for diverse visitors to and through the Park and the James River
- **Provide** connections between non-contiguous Park properties and to regional greenways

## Environmental and Cultural Assets Protection

- **Conserve** wilderness by protecting un-programmed areas for discovery and adventure
- **Protect** sensitive natural resources, reduce invasive species, and restore degraded habitat within the Park and the James River
- **Increase** Park conservation easement coverage
- **Preserve** cultural and historic assets in the Park

## Education and Expansion

- **Educate** school children and visitors on the history, natural resources, and conservation aspects of the Park and the James River
- **Expand** and sustain recreational opportunities within the Park, where appropriate
- **Acquire** additional parcels to improve connectivity and increase the size of the Park



# Strategies to Improve Operations and Maintenance

- Hire additional staff based on 10-year needs
- Assign dedicated police and patrol to the Park
- Increase enforcement of current regulations
- Fund increased maintenance of restrooms
- Investigate conservancy model for governance



# Strategies to Conserve Natural Resources

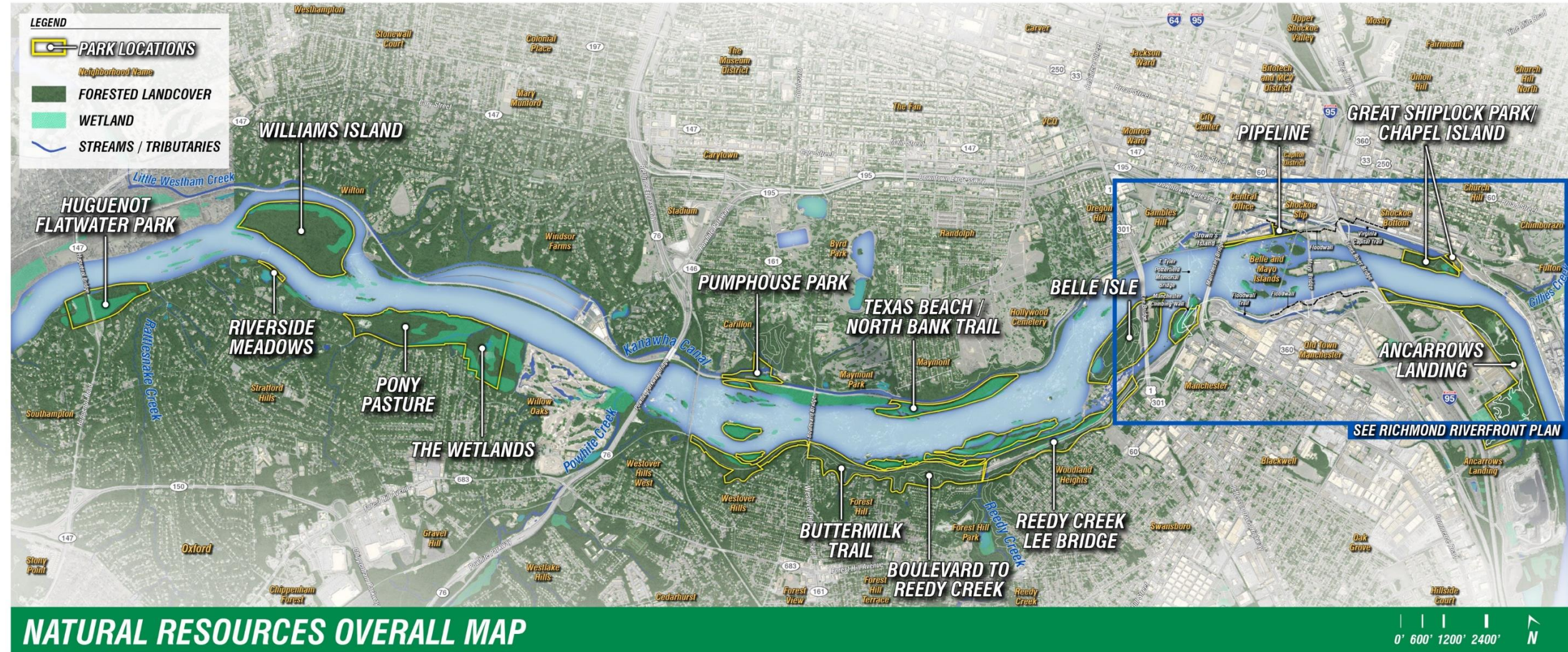
- Expand Conservation Easement
- Continue the work of the Invasive Plant Task Force
- Conserve important resources
  - Wildlife, its habitat, its ability to move through the Park
  - Forest cover, tree canopy, and plant communities
  - River and floodplain
- Restore streams and wetlands
- Reduce soil erosion
- Expand environmental education and awareness
- Continue to focus on environmental compliance





17 JULY 2019

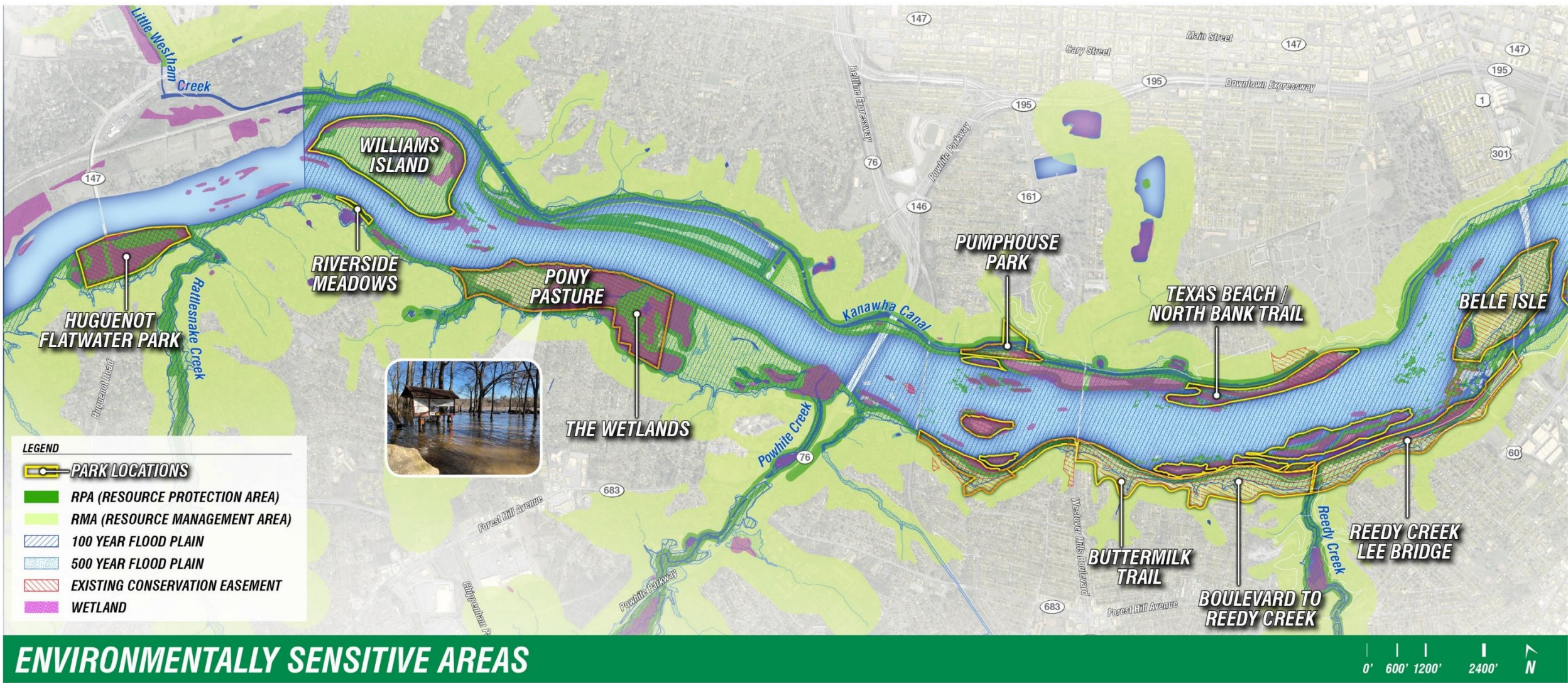
# JAMES RIVER PARK SYSTEM *MASTER PLAN*





# JAMES RIVER PARK SYSTEM MASTER PLAN

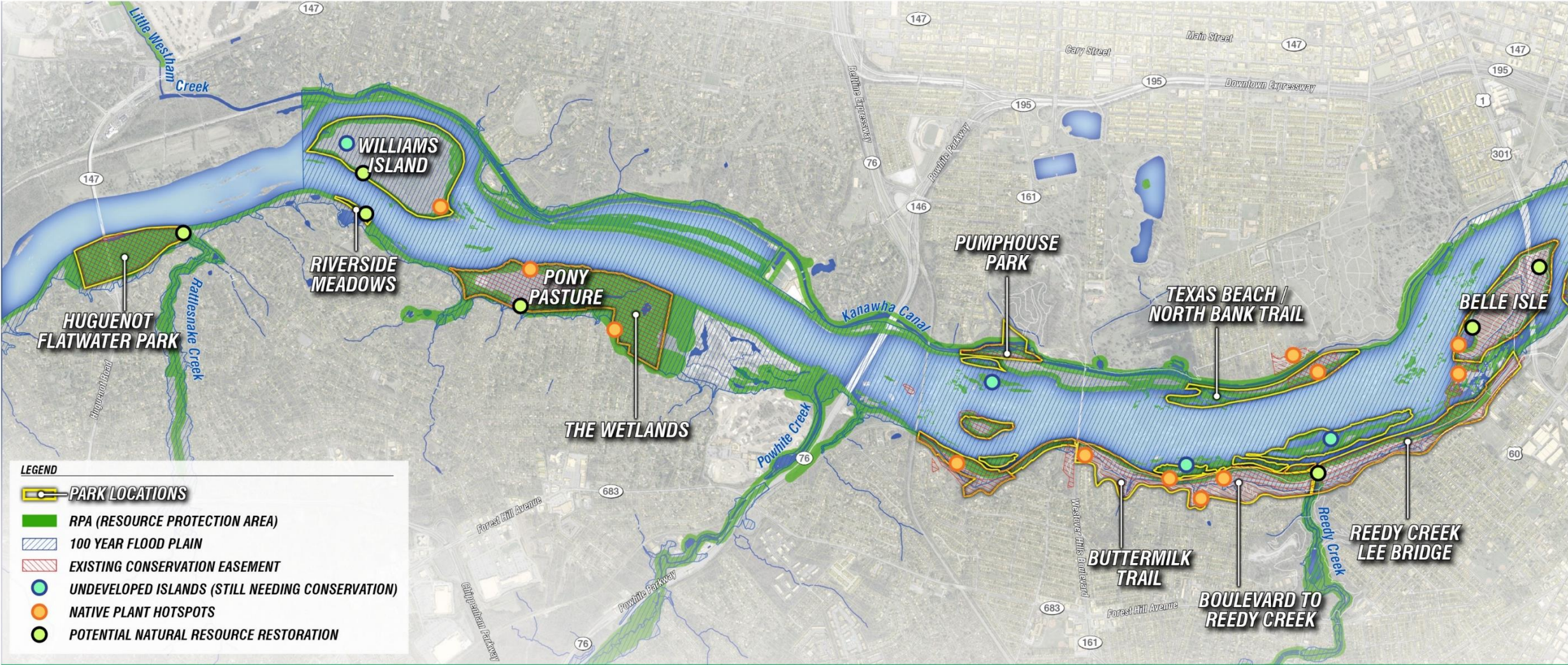
17 JULY 2019





# JAMES RIVER PARK SYSTEM MASTER PLAN

17 JULY 2019





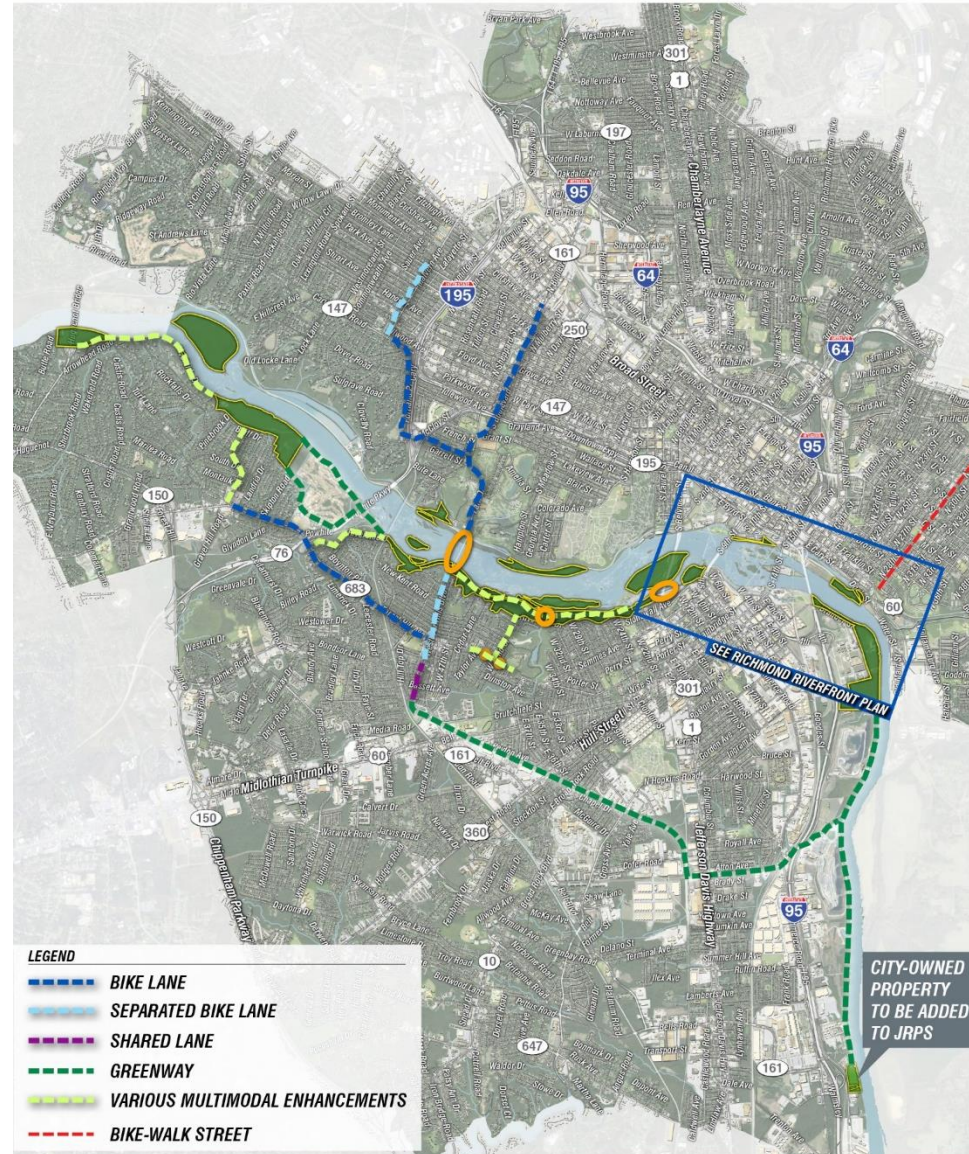
# Strategies for Reducing Vehicular Trips to the Park

- Prohibit construction of new parking areas serving the Park
- Remove impervious cover and/or reduce parking
- Charge non-City residents for parking
- Increase GRTC service
- Implement public and/or private shuttle service
- Improve roadway crossings into the Park
- Improve multimodal neighborhood connections
- Implement streetscape connections in Riverfront Plan





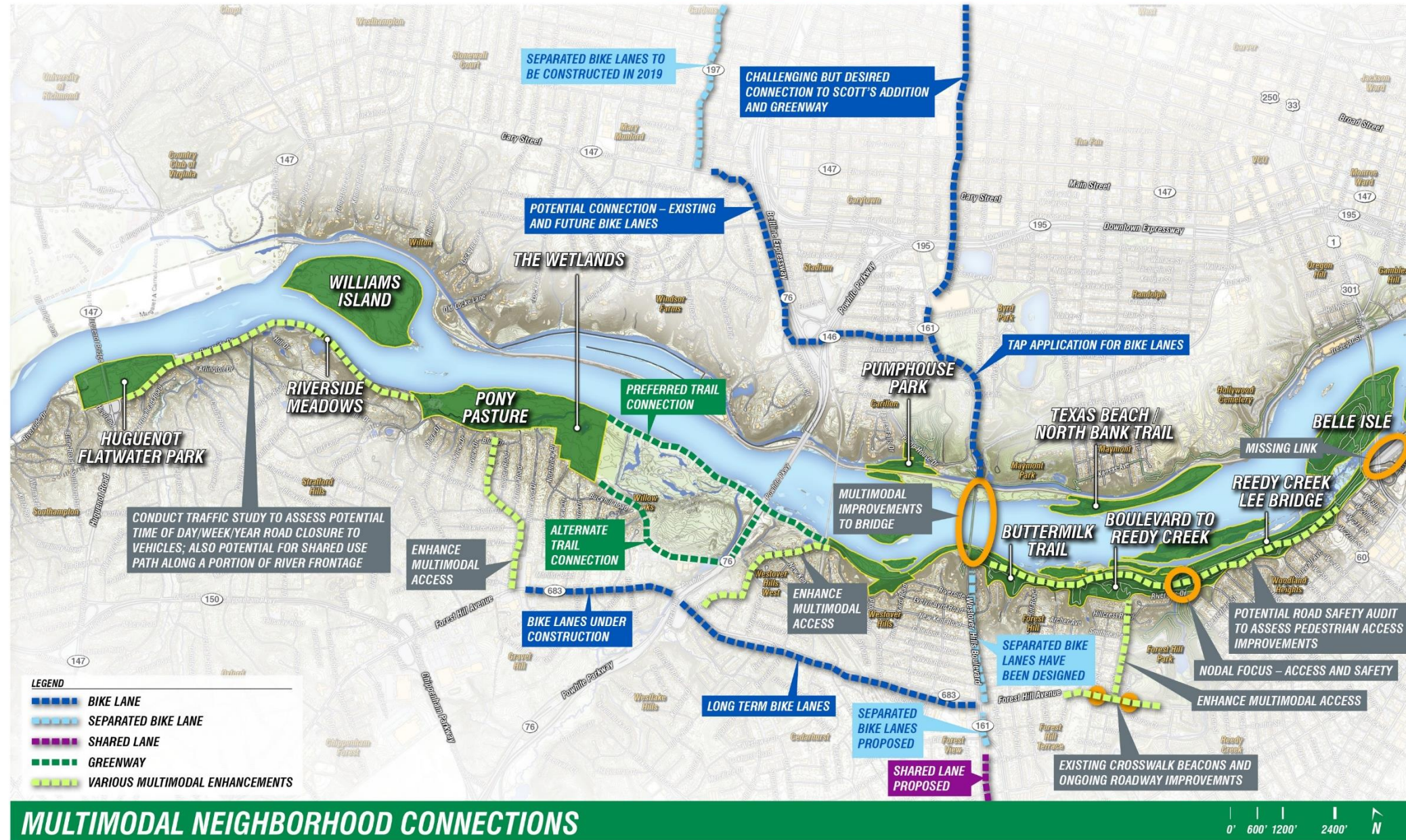
# Multimodal Neighborhood Connections





17 JULY 2019

# JAMES RIVER PARK SYSTEM MASTER PLAN





# Strategies for Enhancing the Trails and Greenways System

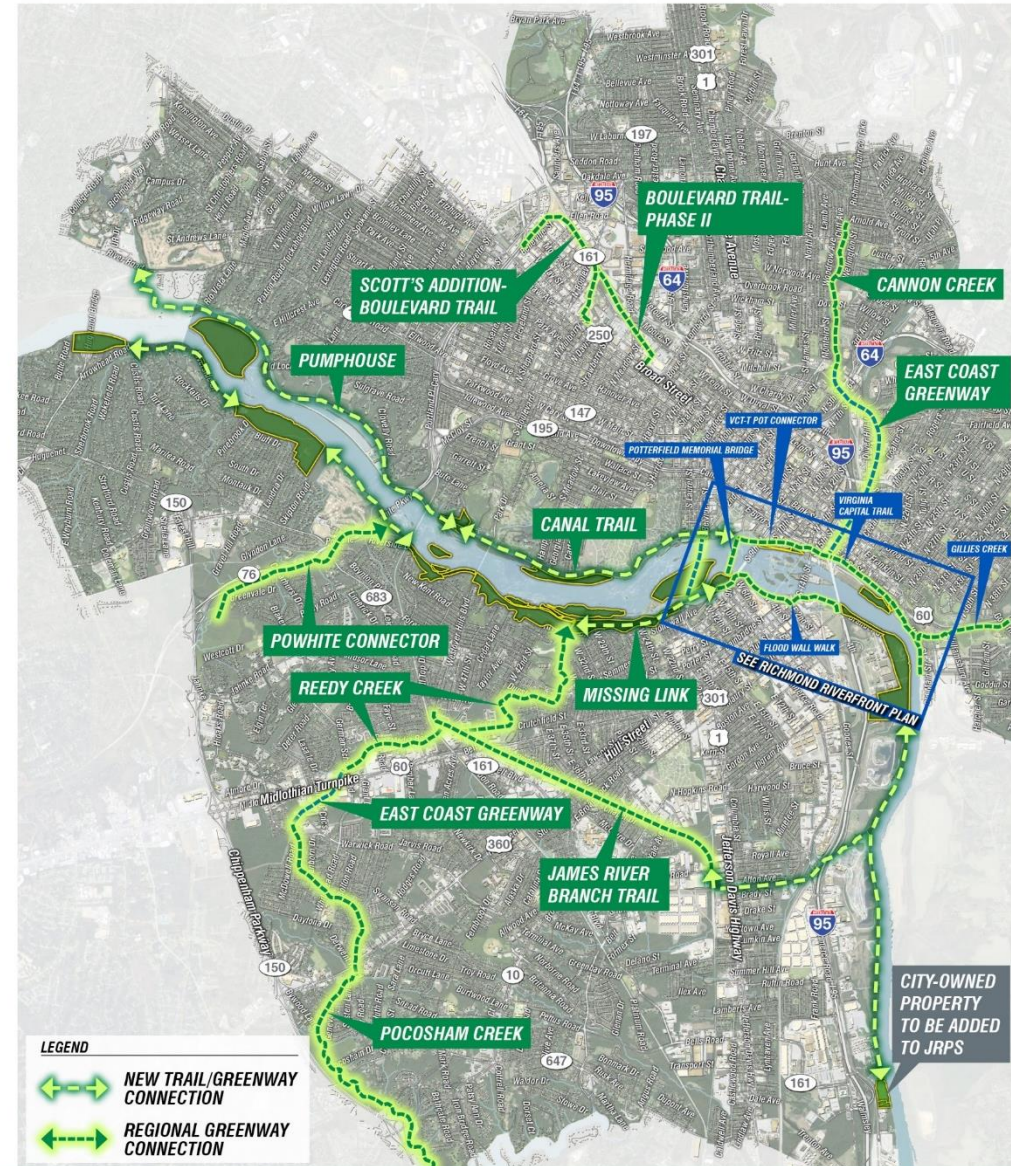
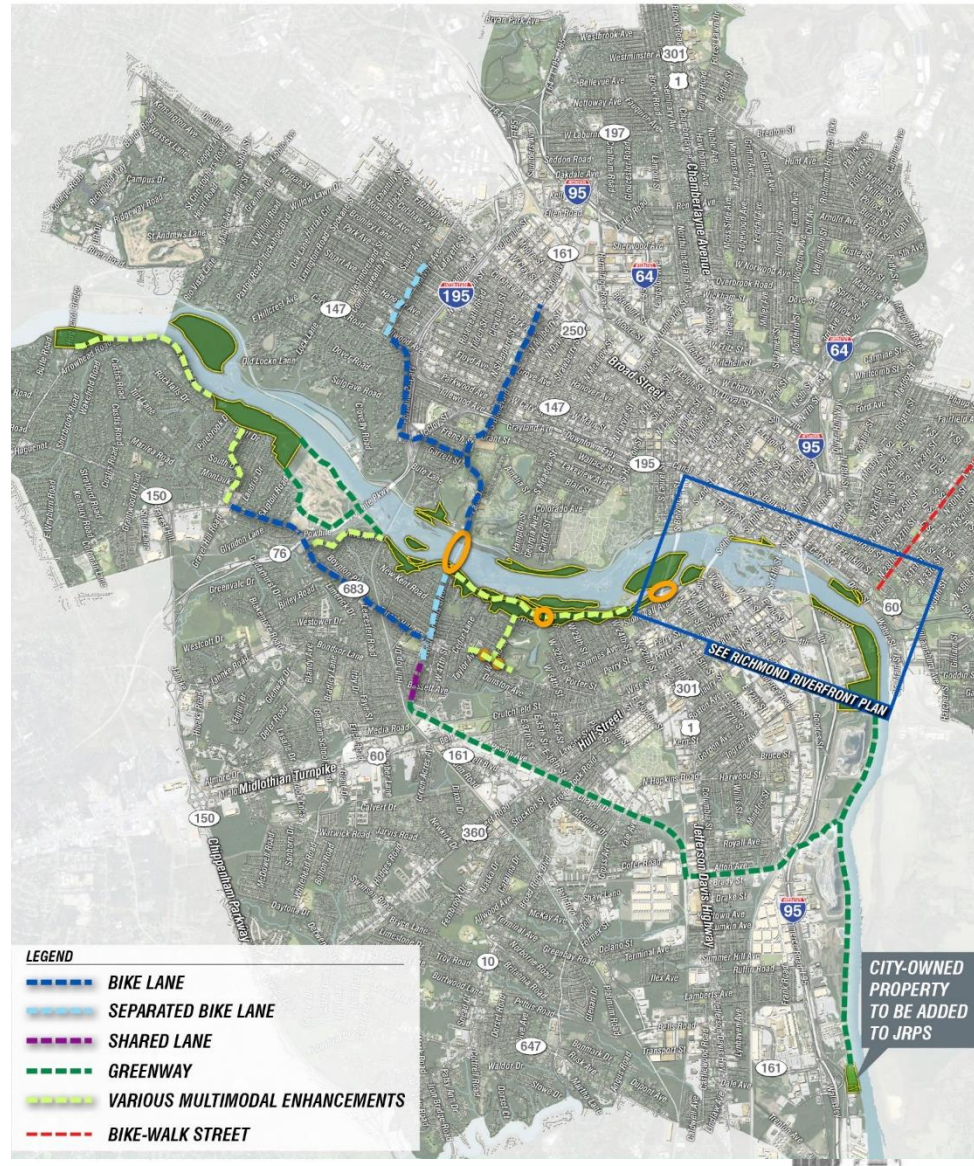
- Support funding and implementation of Regional Greenways
  - Gillies Creek
  - Reedy Creek
  - James River Branch Trail
  - Powhite Creek Greenway
  - East Coast Greenway
- Ensure that regional projects include JRPS wayfinding
- Pursue east-west connections
  - Huguenot Flatwater to Pony Pasture
  - Pony Pasture to Buttermilk
  - Pump House Greenway
  - Kanawha Canal Greenway
- Implement connections from Riverfront Plan, including Missing Link
- Maintain existing singletrack
- Preserve adventure by leaving certain areas difficult to access





# JAMES RIVER PARK SYSTEM MASTER PLAN

17 JULY 2019



## GREENWAYS & TRAILS

0' 1800' 3600' 7200' N



# JAMES RIVER PARK SYSTEM MASTER PLAN



## GREENWAYS & TRAILS

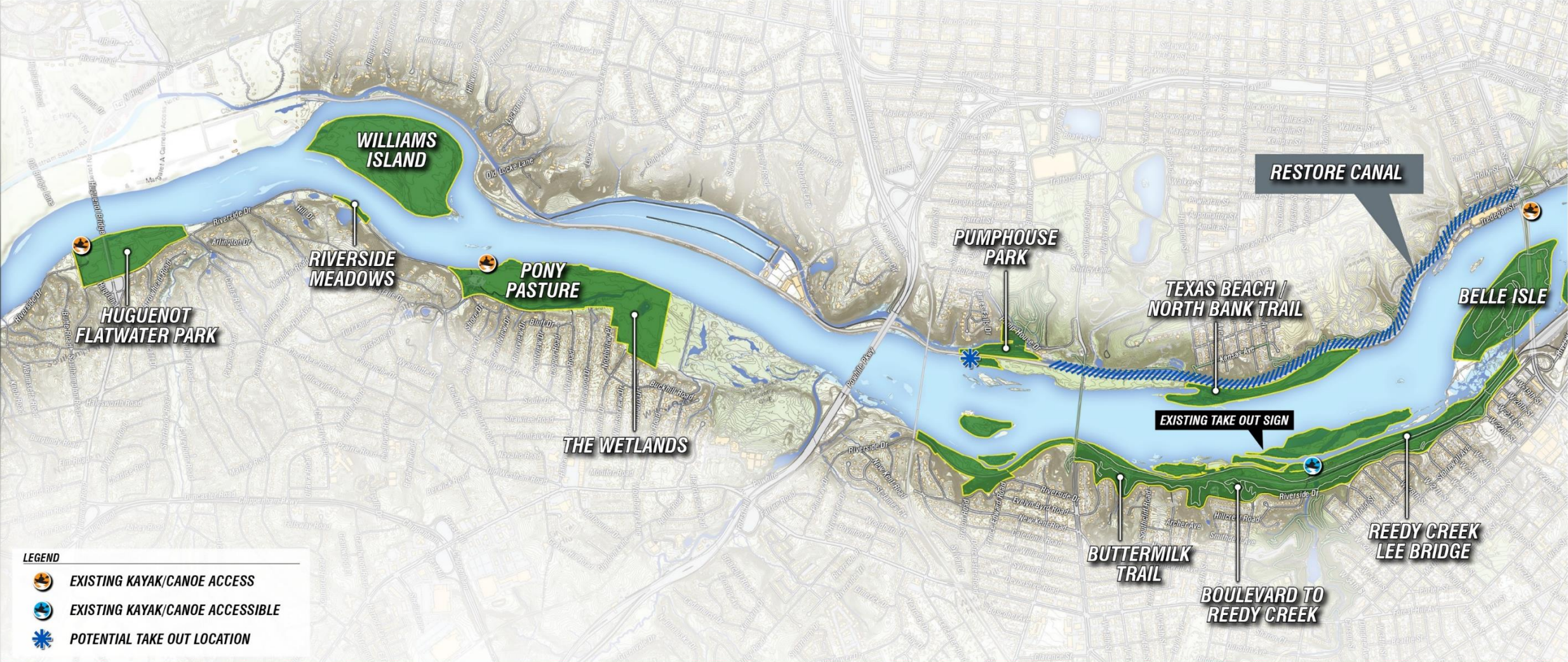


# Strategies for Improving Water Access

- Improve signage and online information about river dangers
- Retrofit existing access points for universal accessibility
- Work with Venture Richmond to restore Kanawha Canal
- Improve/maintain canals
- Designate parking for paddlers
- Work with Richmond Rowing Club to construct rowing facility at Ancarrow's Landing
- Establish a community paddle share program
- Implement water access recommendations from Riverfront Plan
- Add access beneath I-95 bridge









# Strategies for Maintaining and Interpreting Park Buildings

- Finalize plans and implement adaptive reuse of Pump House
- Fund and construct improvements at Reedy Creek
- Pursue planning and design for Pony Pasture Environmental Education Center
- Increase funding for maintenance of Park structures and interpretation of the history and culture of the Park and River
- Stabilize and interpret historic structures and sites on Belle Isle, including hydro plant and mill
- Implement recommendations from Riverfront Plan





# Strategies to Improve the User Experience

- Promote stewardship and volunteering
- Implement Riverfront Plan to help disperse visitors to areas east of Belle Isle
- Expand educational programs
- Discourage detrimental activities
- Install consistently branded interpretive and wayfinding signage
- Post up-to-date maps at Park entrances
- Install water fountains and benches
- Strategic improvements to restrooms
- Create a seasonal program guide
- Implement trial time and location for off-leash dogs



# Strategies to Expand James River Park

- Implement the Riverfront Plan to create new riverside public spaces
- Incorporate publicly-owned parcels into the Park System
  - Acreage south of Ancarrow's Landing
- Acquire privately-owned parcels
- Investigate coordination between Park System with adjacent counties

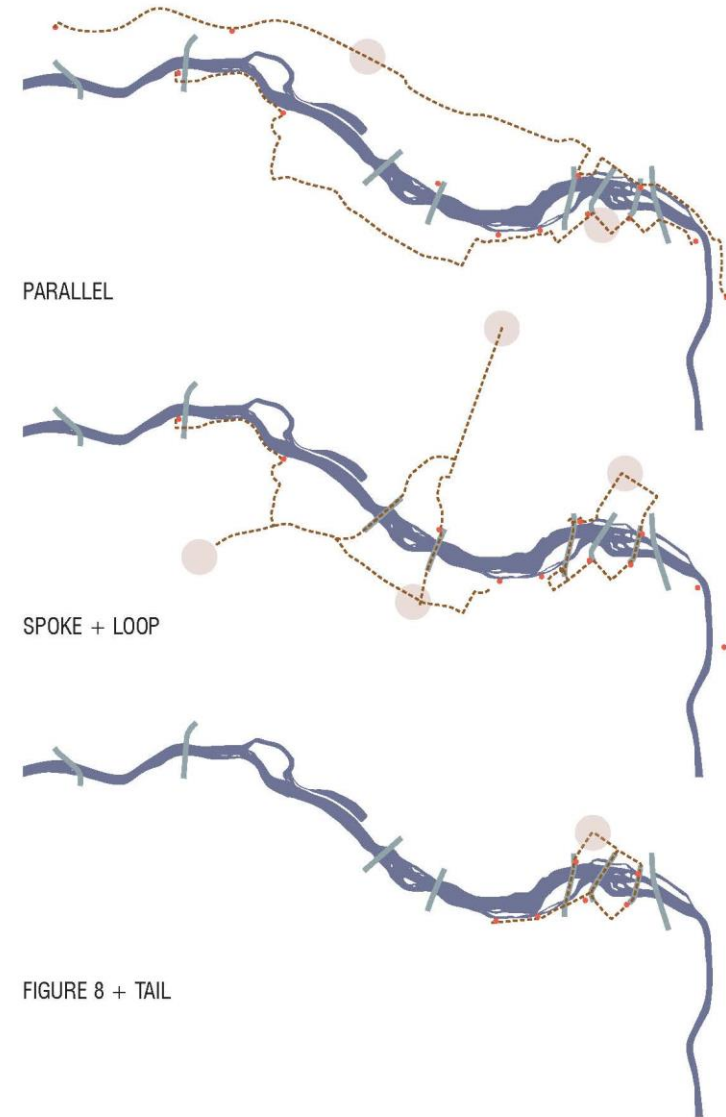
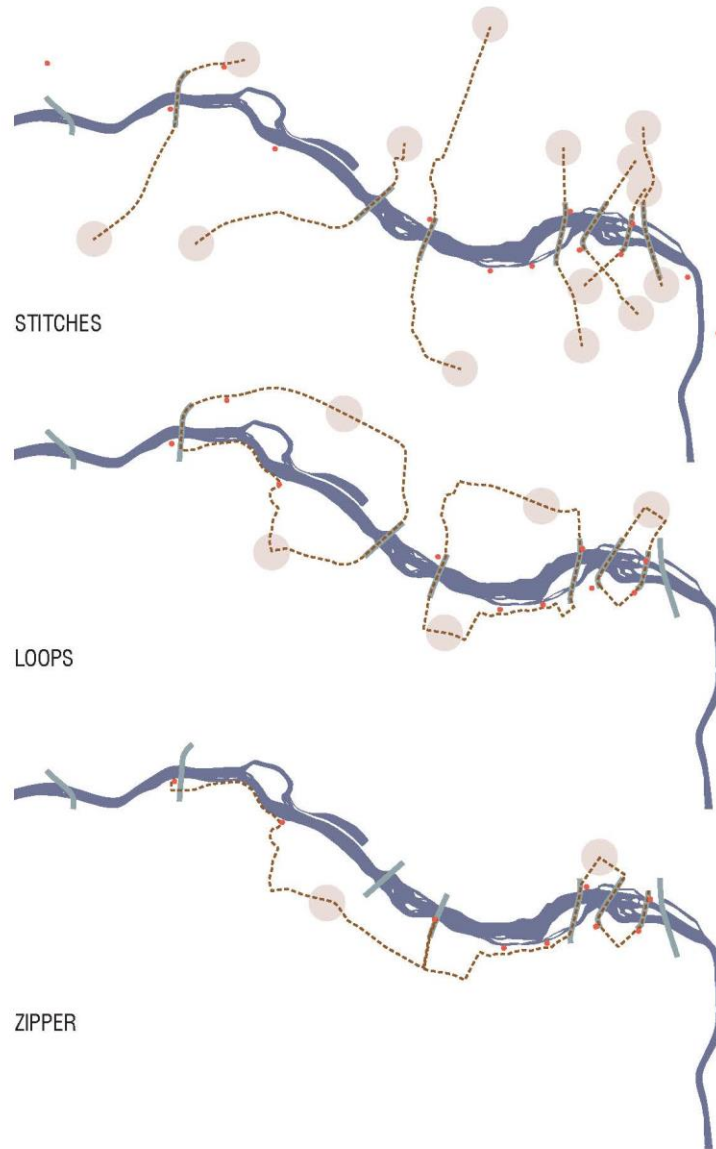


# Focus Areas

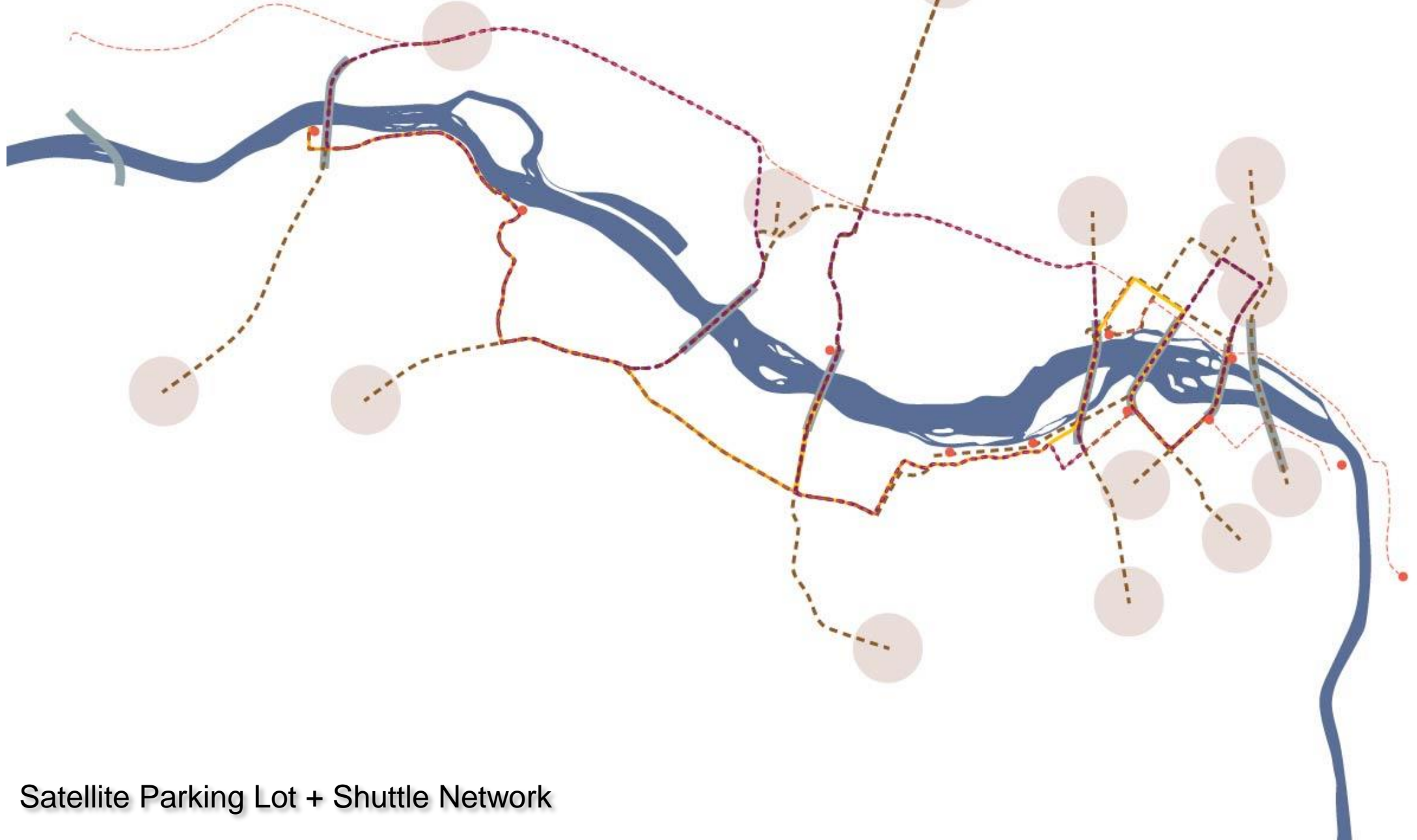
- Satellite Parking and Shuttles
- Pump House Greenway
- Reedy Creek Greenway
- Pony Pasture Educational Center
- Reedy Creek Facilities
- Pump House Park



# Satellite Parking & Shuttles



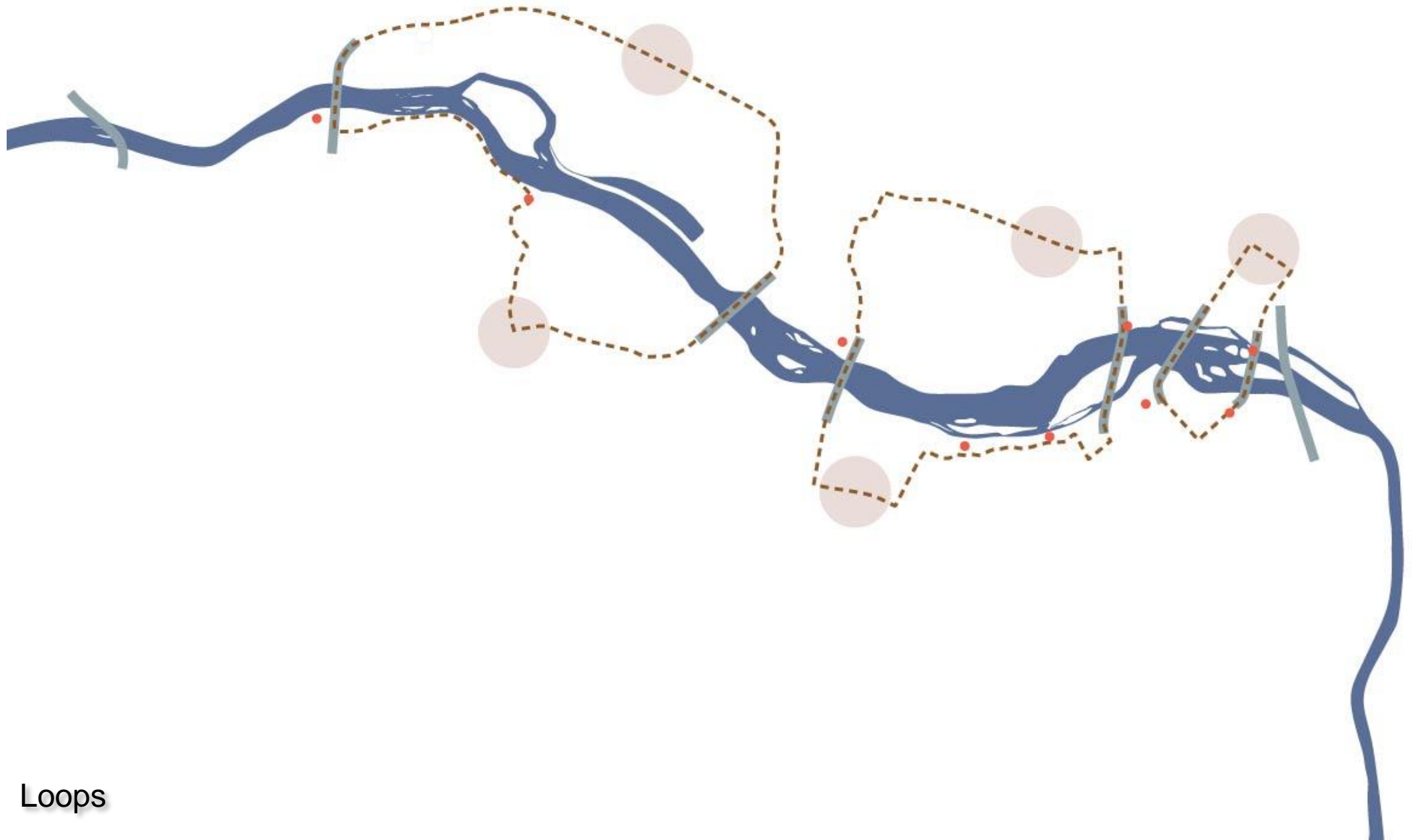
# Satellite Parking & Shuttles



Satellite Parking Lot + Shuttle Network



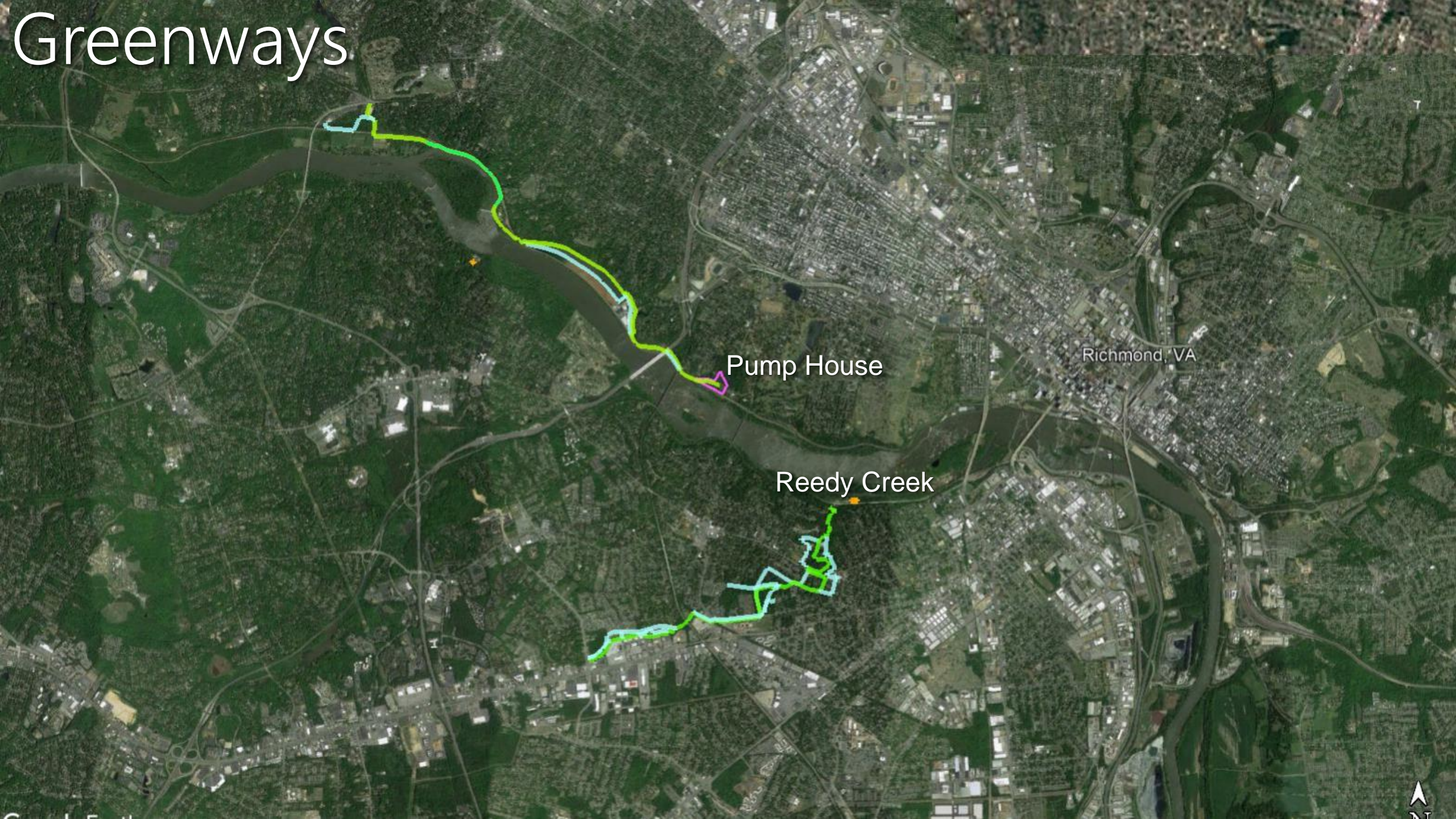
# Satellite Parking & Shuttles



Loops



# Greenways



Pump House

Richmond, VA

Reedy Creek





# Pump House Greenway

Huguenot Rd

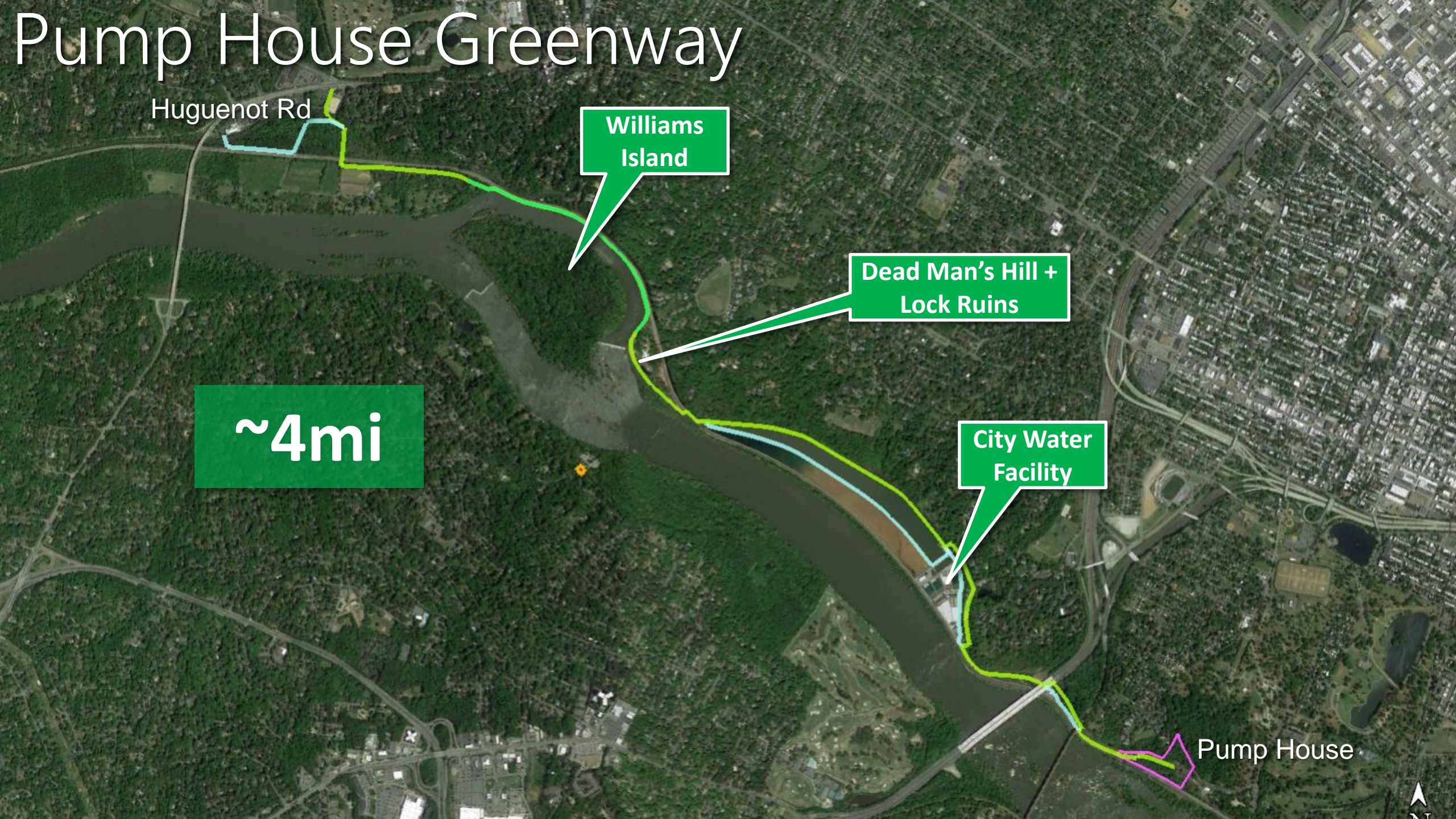
Williams  
Island

Dead Man's Hill +  
Lock Ruins

~4mi

City Water  
Facility

Pump House





# Pump House Greenway



Water Facility Access Drive



# Pump House Greenway



Settling Pond Road



# Pump House Greenway



Lock Ruins @ Dead Man's Hill



# Reedy Creek Greenway

**~3.5mi**

**Crooked  
Branch Park**

Reedy Creek HQ

**Forest Hill  
Park**

German School Rd

**James River  
Br R2T**





# Pony Pasture Education Center





# Pony Pasture Education Center





# Pony Pasture Education Center



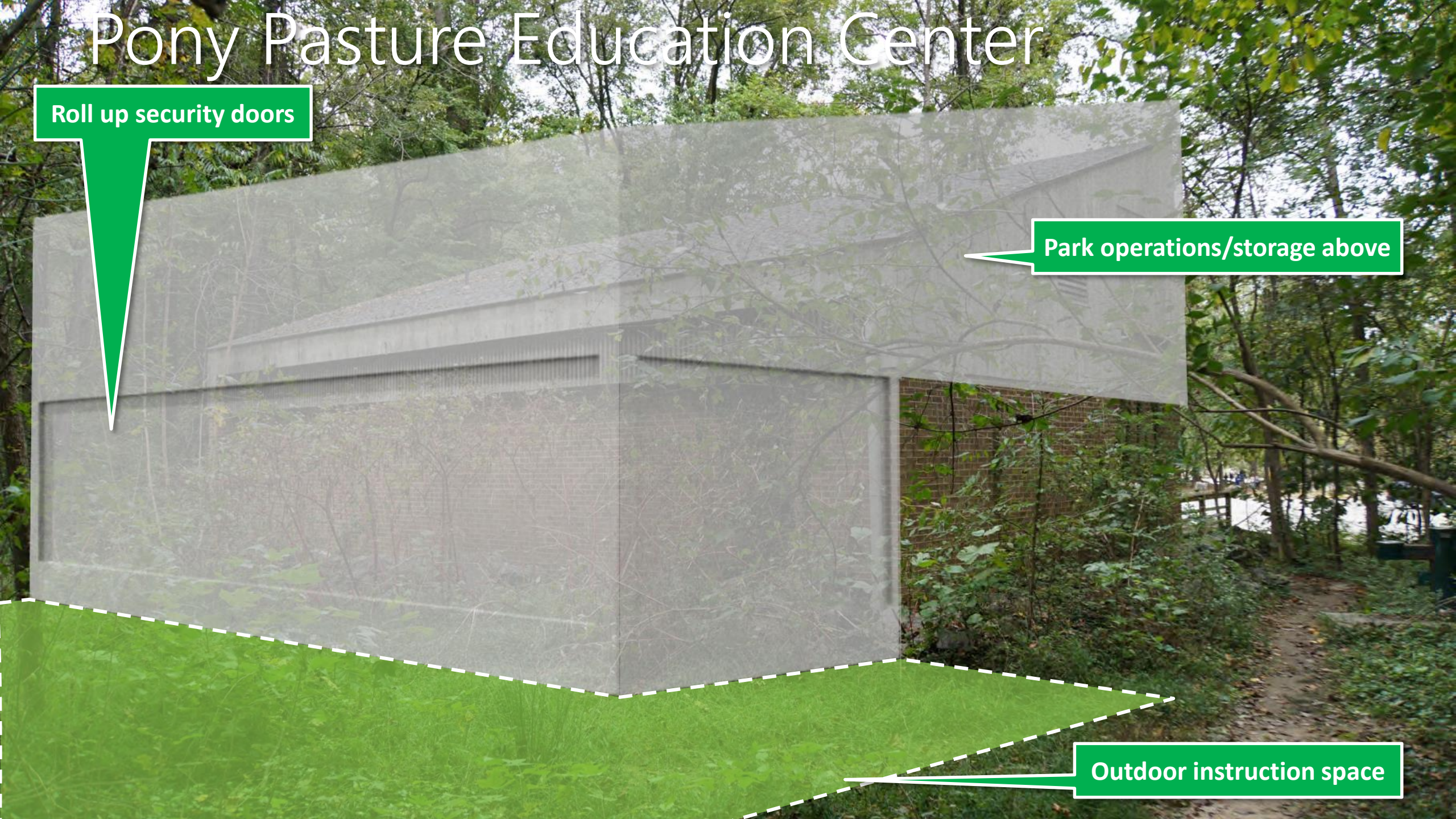


# Pony Pasture Education Center

Roll up security doors

Park operations/storage above

Outdoor instruction space





# Reedy Creek HQ and Welcome Center



yard

HQ

yard

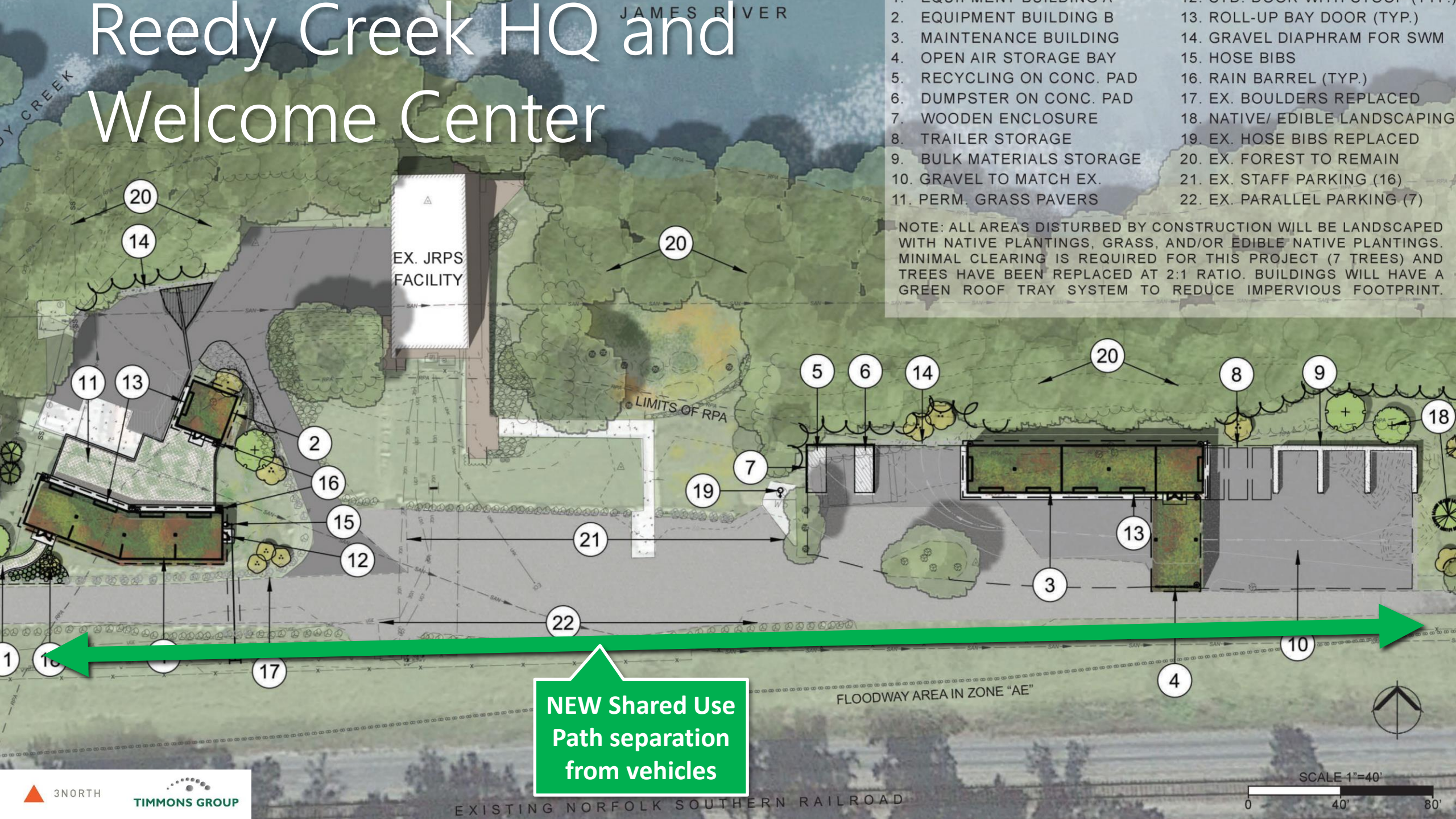


# Reedy Creek HQ and Welcome Center





# Reedy Creek HQ and Welcome Center



1. EQUIPMENT BUILDING A
2. EQUIPMENT BUILDING B
3. MAINTENANCE BUILDING
4. OPEN AIR STORAGE BAY
5. RECYCLING ON CONC. PAD
6. DUMPSTER ON CONC. PAD
7. WOODEN ENCLOSURE
8. TRAILER STORAGE
9. BULK MATERIALS STORAGE
10. GRAVEL TO MATCH EX.
11. PERM. GRASS PAVERS
12. SIDE DOOR WITH STEEP (TYP.)
13. ROLL-UP BAY DOOR (TYP.)
14. GRAVEL DIAPHRAM FOR SWM
15. HOSE BIBS
16. RAIN BARREL (TYP.)
17. EX. BOULDERS REPLACED
18. NATIVE/ EDIBLE LANDSCAPING
19. EX. HOSE BIBS REPLACED
20. EX. FOREST TO REMAIN
21. EX. STAFF PARKING (16)
22. EX. PARALLEL PARKING (7)

NOTE: ALL AREAS DISTURBED BY CONSTRUCTION WILL BE LANDSCAPED WITH NATIVE PLANTINGS, GRASS, AND/OR EDIBLE NATIVE PLANTINGS. MINIMAL CLEARING IS REQUIRED FOR THIS PROJECT (7 TREES) AND TREES HAVE BEEN REPLACED AT 2:1 RATIO. BUILDINGS WILL HAVE A GREEN ROOF TRAY SYSTEM TO REDUCE IMPERVIOUS FOOTPRINT.

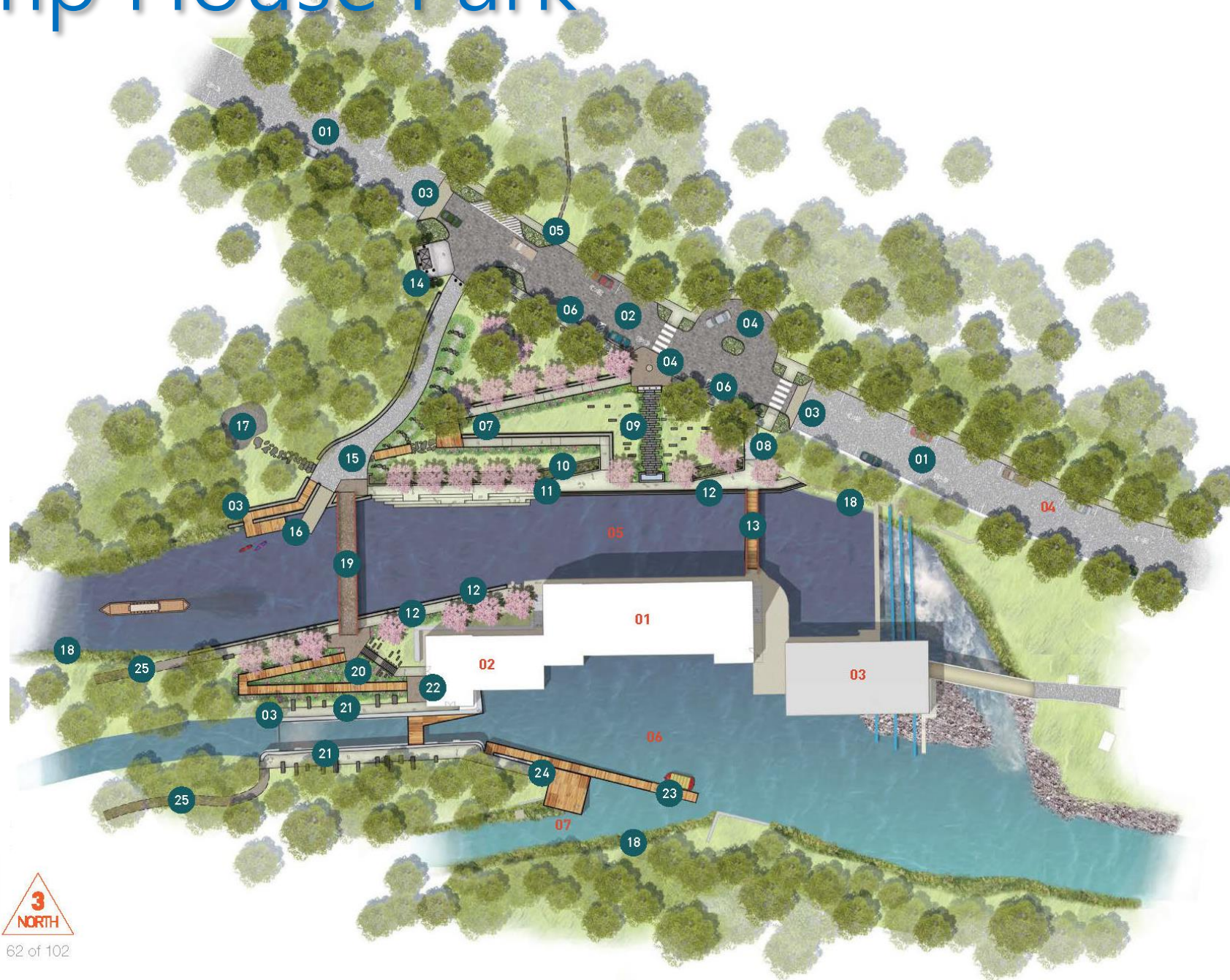


# Pump House Park





# Pump House Park

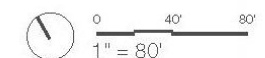


## KEY

- 01 New Pump-House (1881-1884)
- 02 1905 Addition
- 03 Hydro-Electric Pumping Station
- 04 Pump House Drive
- 05 Pump House Canal
- 06 James River and Kanawha Canal
- 07 Washington Canal

## SITE FEATURES

- 01 On-street Parallel Parking
- 02 Specialty Paver Drive (flush with sidewalk)
- 03 Mountable Curb
- 04 Drop-off Lane and Main Entrance
- 05 Trail Connection to Dogwood Dell Trails
- 06 Accessible Parking Spaces
- 07 Entrance Ramp
- 08 Entrance Stairs (existing)
- 09 Water Feature
- 10 Stormwater Planters
- 11 Promenade and Stairs Along Canal
- 12 Canal Wall
- 13 Pedestrian Bridge/Utility Entrance
- 14 Dumpster Enclosure
- 15 Refurbished Driveway to Boat Launches
- 16 Boat Ramp and Boat Dock
- 17 Quarry site – Outdoor Educational Space
- 18 Shoreline Plantings
- 19 Existing Steel Truss Bridge
- 20 Entrance Ramp and Stairs to Building
- 21 Walkways Along Canal (Top of Canal)
- 22 Main Entrance to Pump House
- 23 Canal dock (access from Canal to Building)
- 24 Decking and Overlook
- 25 Interpretive and Nature Trails





# Pump House Park





# Presentation to Public



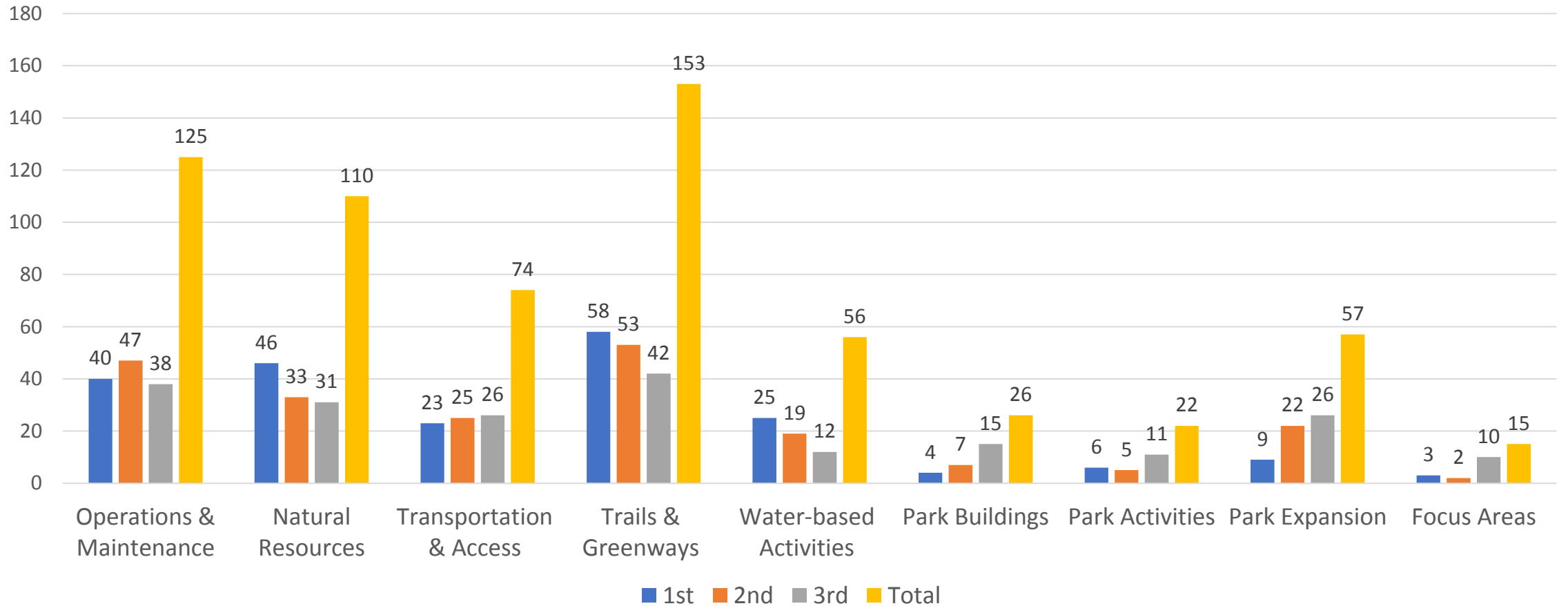
- Public meeting attended by over 150 people
- Presentation of draft recommendations
- Open house discussion
- Encouragement to fill out prioritization survey
- 222 survey respondents





# Topic Areas

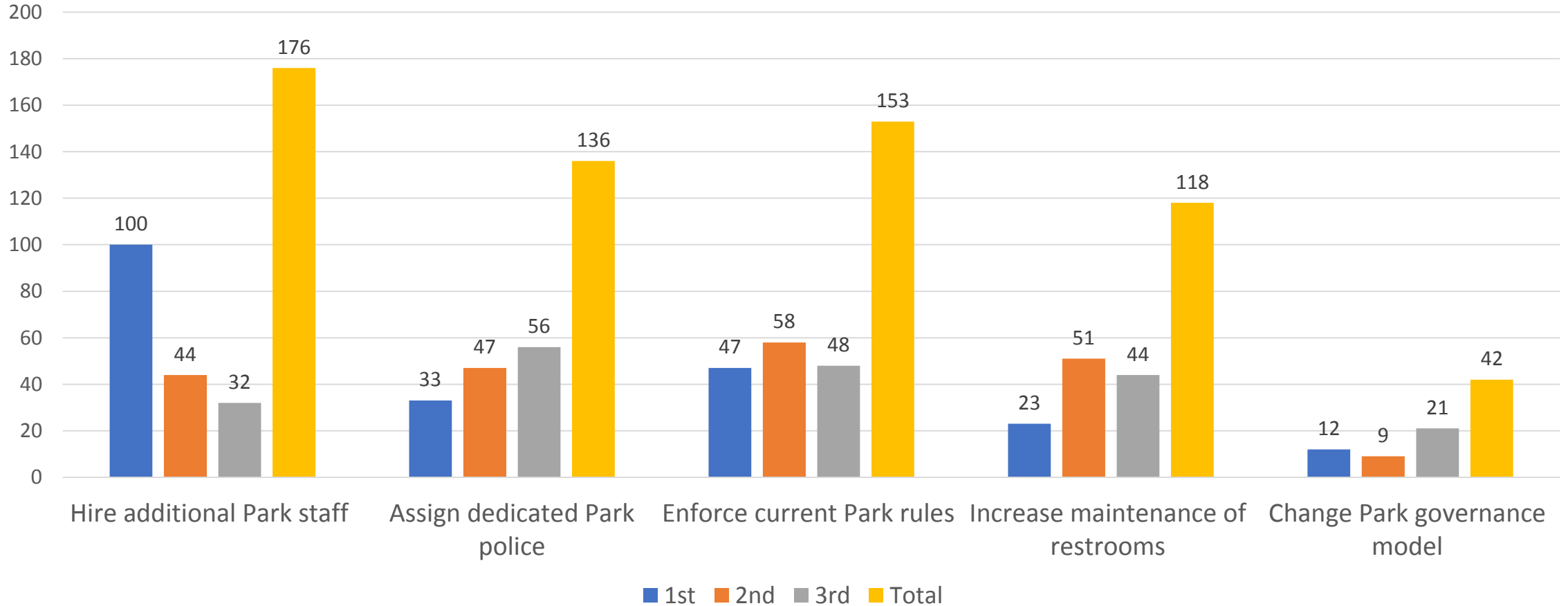
In your opinion which of the following are the top overall Topic Areas for implementation?





# Operations and Maintenance

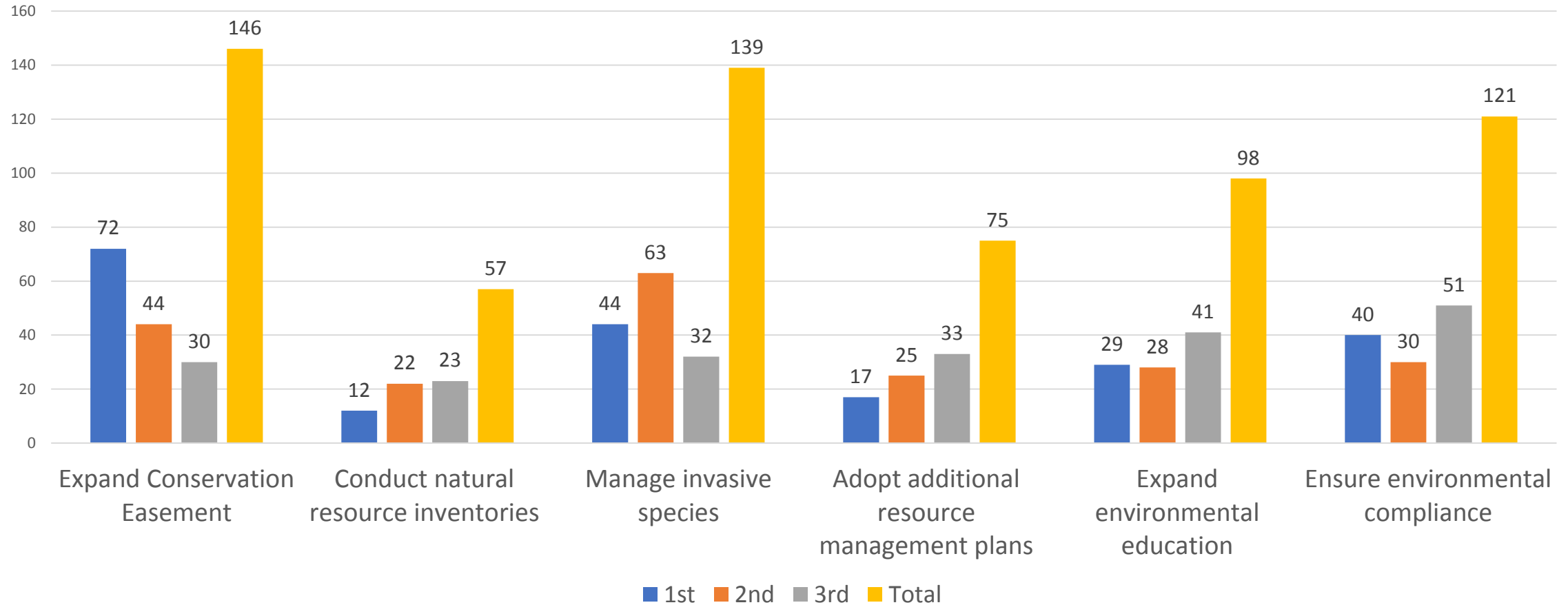
In your opinion which of the following are the top priorities for implementation?





# Natural Resources

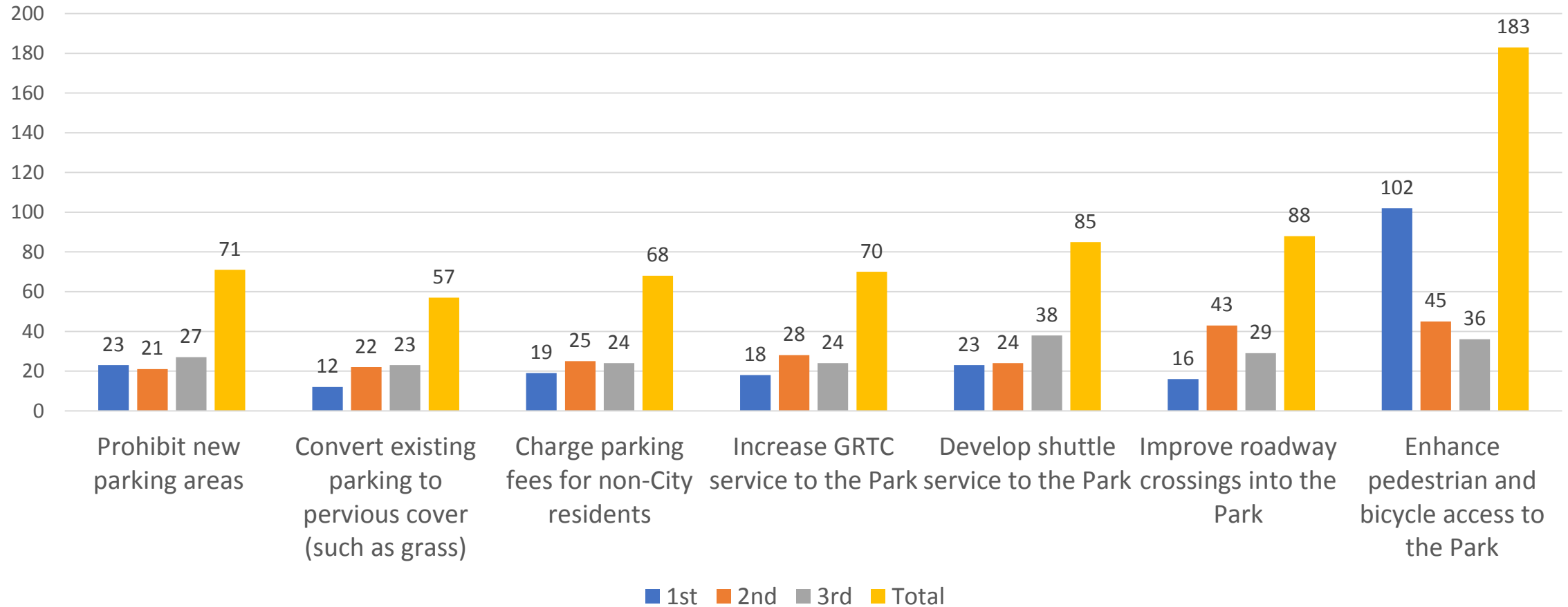
In your opinion which of the following are the top priorities for implementation?





# Transportation and Access

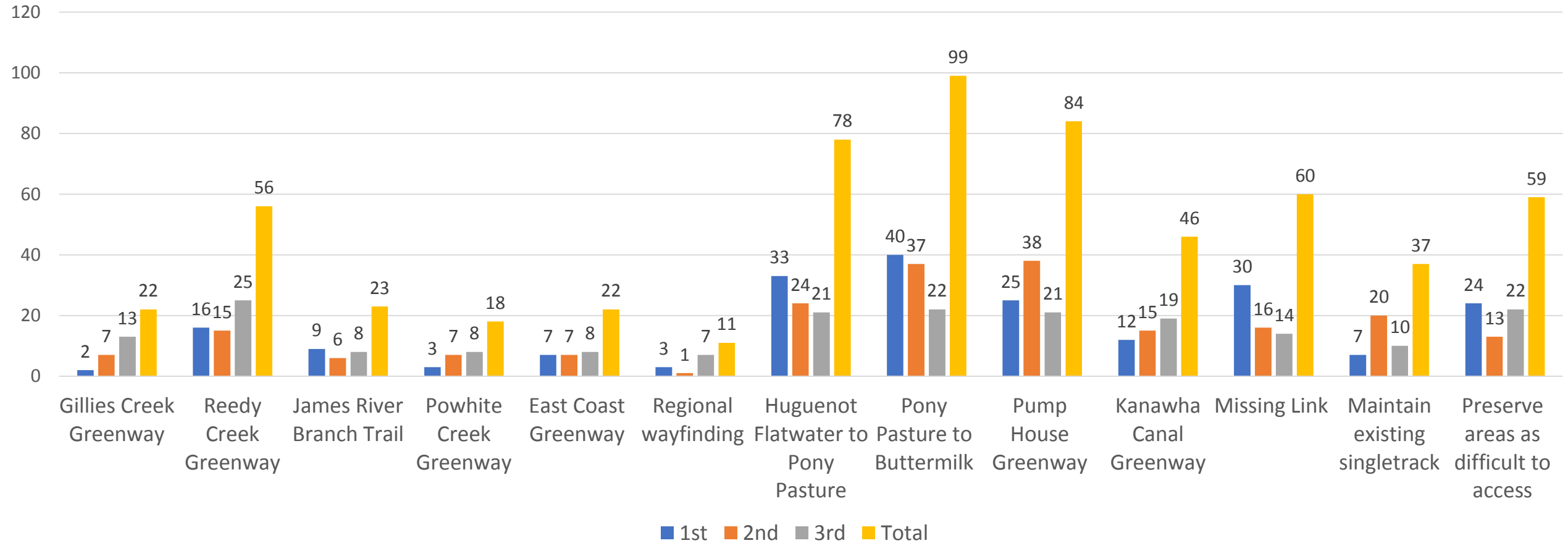
In your opinion which of the following are the top priorities for implementation?





# Trails and Greenways

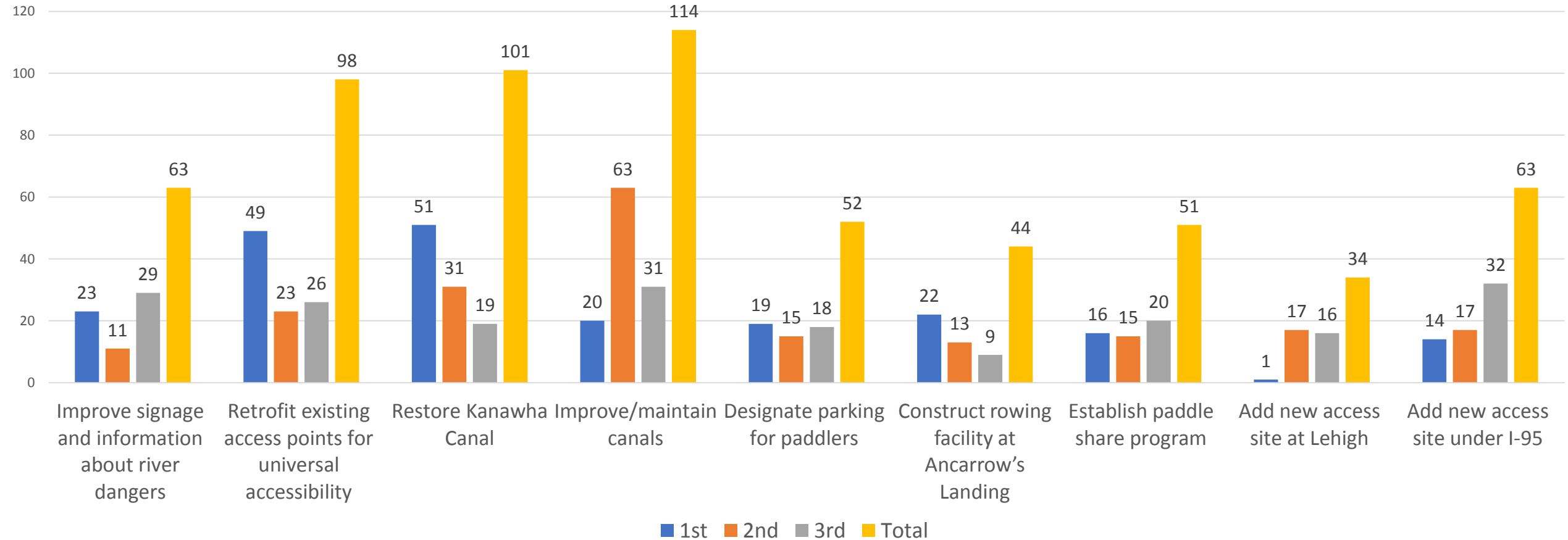
In your opinion which of the following are the top priorities for implementation?





# Water-based Activities

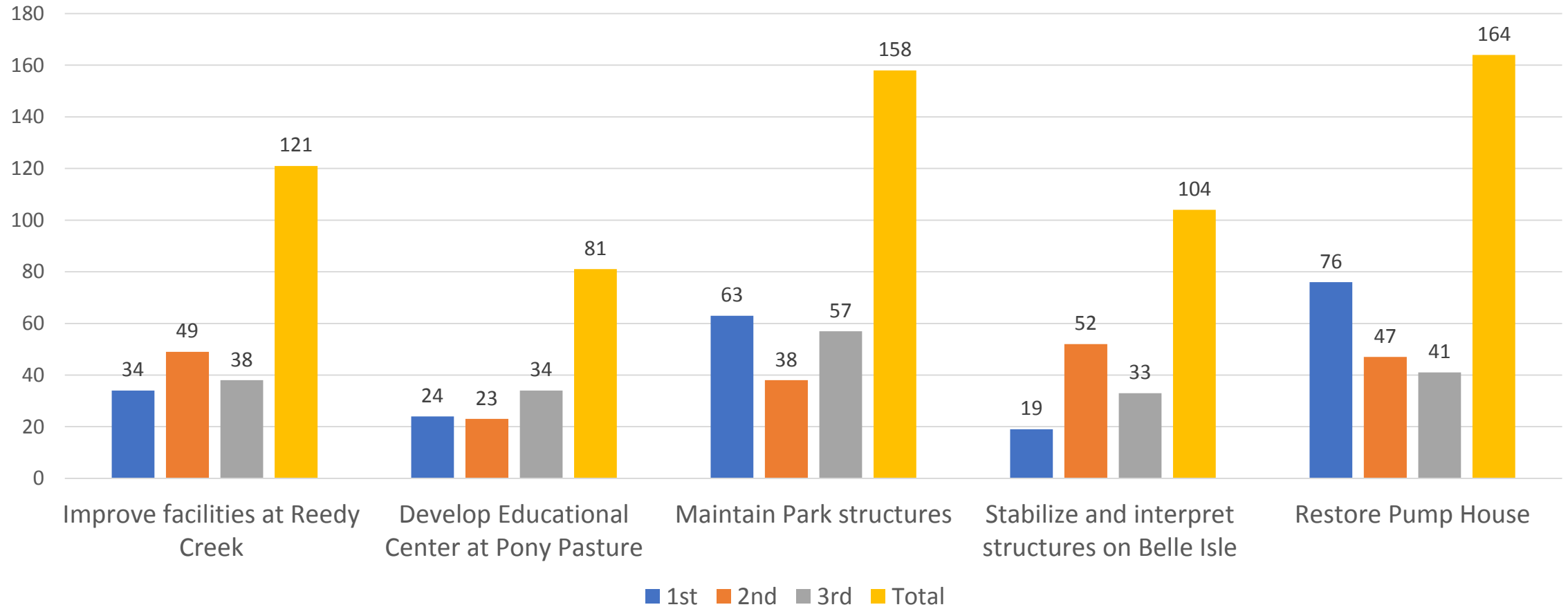
In your opinion which of the following are the top priorities for implementation?





# Park Buildings

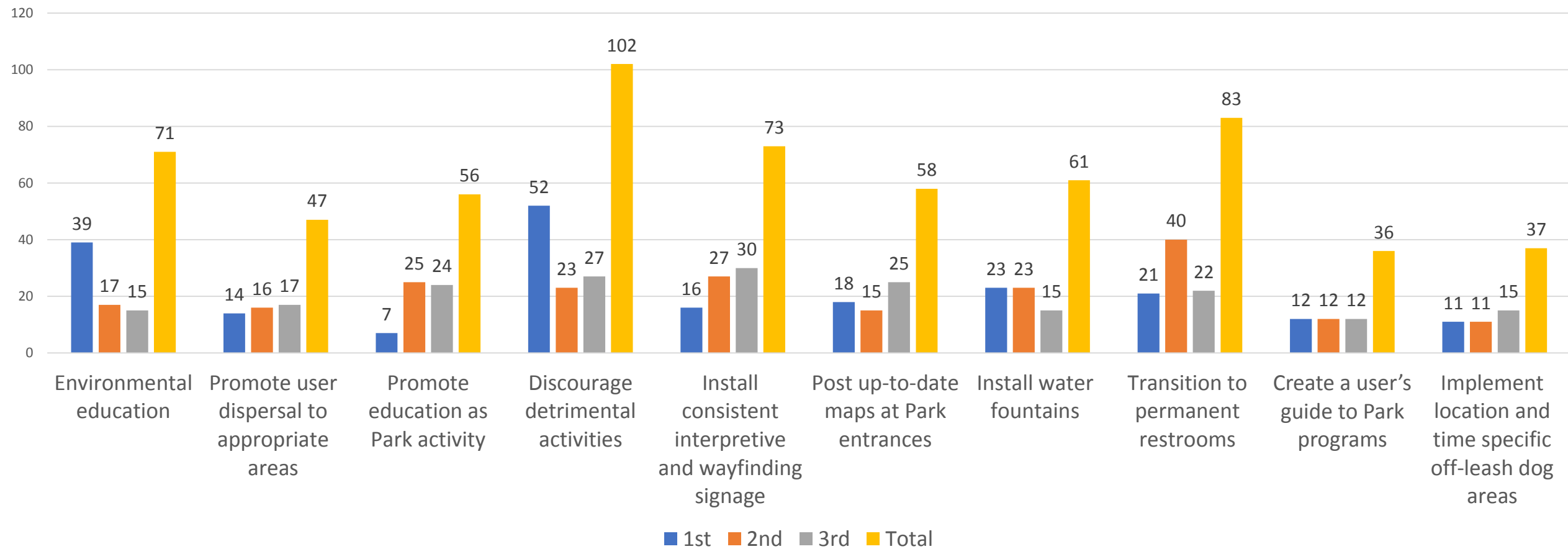
In your opinion which of the following are the top priorities for implementation?





# Park Activities

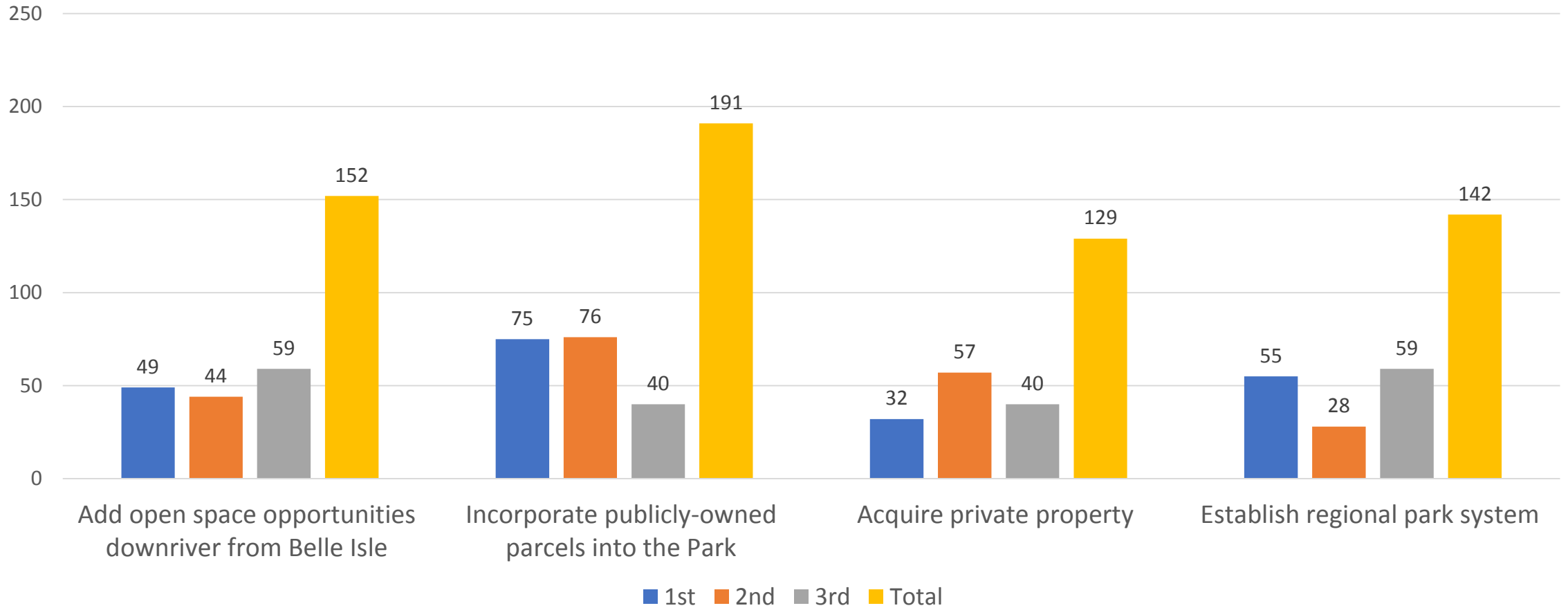
In your opinion which of the following are the top priorities for implementation?





# Park Expansion

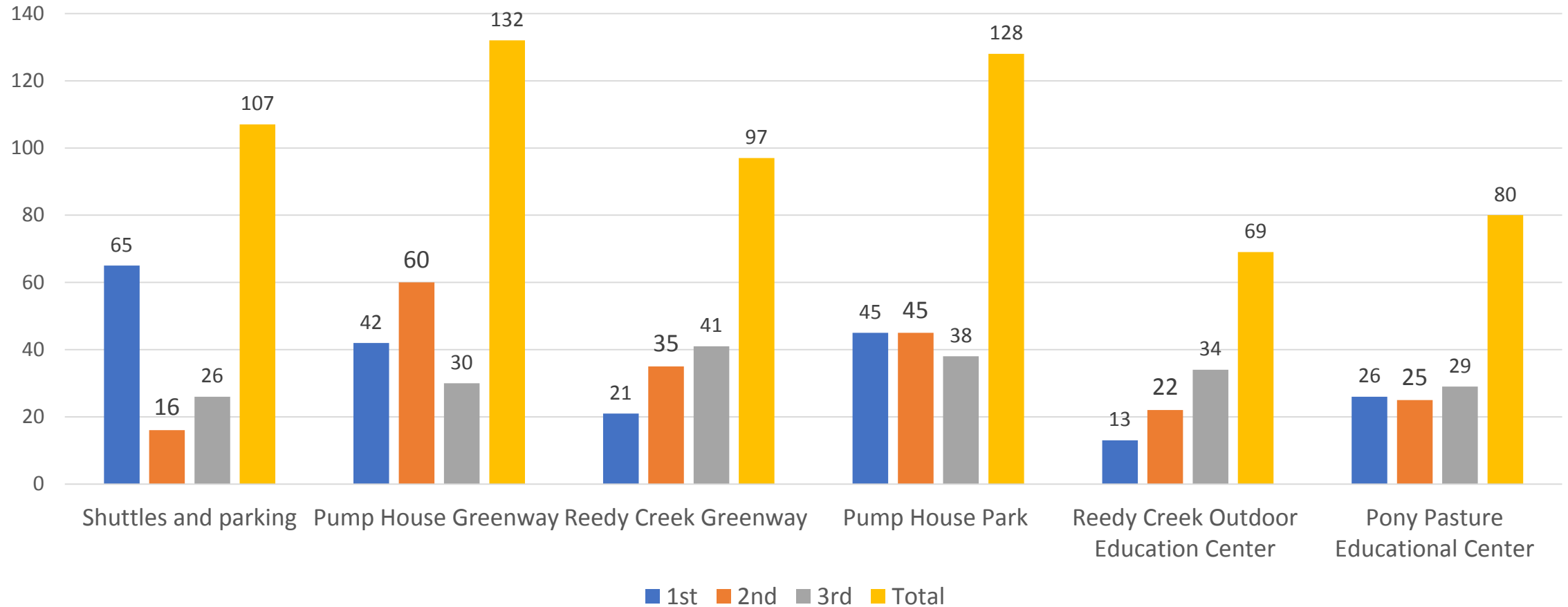
In your opinion which of the following are the top priorities for implementation?





# Focus Areas

In your opinion which of the following are the top priorities for implementation?





# Next Steps

- Informal presentation to Urban Design Committee 8.8.19
- Confirm priorities and action plan
- Edits to draft plan
- Formal action by UDC 9.5.19
- Presentation to Planning Commission 9.16.19
- City Council adoption