

Richmond Regional
**Transportation
Planning
Organization**

Gamble's Mill Eco-Corridor & Huguenot Rd.

Active Transportation Work Group

September 10, 2019

Presentation by: Phil Riggan, PlanRVA

Gamble's Mill Eco-Corridor at Huguenot & River roads



Credit: PlanRVA

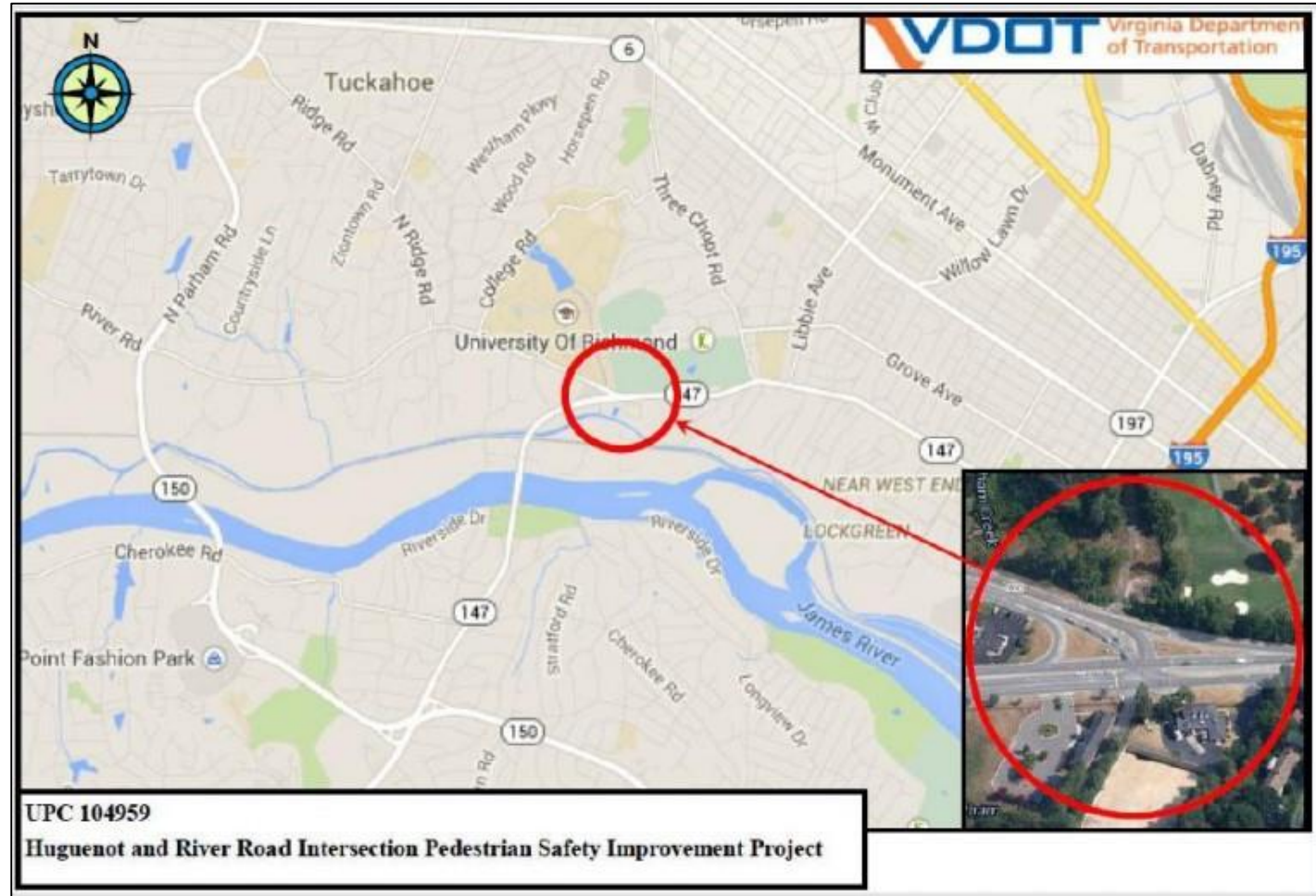
Richmond Regional Transportation Planning Organization

Ashland | Charles City | Chesterfield | Goochland | Hanover | Henrico | New Kent | Powhatan | Richmond



Gamble's Mill Eco-Corridor at Huguenot & River roads

- Huguenot Bridge reconstruction completed Oct. 2013
- Needed safety improvements at intersection and approaches (sidewalks, signals, crosswalks)
- Each approach to the intersection maintained by 3 different entities (Henrico County, City of Richmond, VDOT)



Credit: PlanRVA

Richmond Regional Transportation Planning Organization

Ashland | Charles City | Chesterfield | Goochland | Hanover | Henrico | New Kent | Powhatan | Richmond



Gamble's Mill Eco-Corridor at Huguenot & River roads



Credit: PlanRVA

Richmond Regional Transportation Planning Organization

Ashland | Charles City | Chesterfield | Goochland | Hanover | Henrico | New Kent | Powhatan | Richmond



Gamble's Mill Eco-Corridor at Huguenot & River roads

- Fall 2013, Richmond and Henrico applied to the RRRTPO for \$870,000 of CMAQ funding (FY14-19 SYIP).
- Total allocations: \$1,001,598
- VDOT administered project



Credit: PlanRVA

Richmond Regional Transportation Planning Organization

Ashland | Charles City | Chesterfield | Goochland | Hanover | Henrico | New Kent | Powhatan | Richmond



Gamble's Mill Eco-Corridor at Huguenot & River roads

- Sidewalk connects Gambles Mill Eco-Corridor at University of Richmond to Huguenot and River roads



Credit: PlanRVA

Richmond Regional Transportation Planning Organization

Ashland | Charles City | Chesterfield | Goochland | Hanover | Henrico | New Kent | Powhatan | Richmond



Gamble's Mill Eco-Corridor at Huguenot & River roads

- 3- Span wire mounted traffic signals upgraded to current standards
- Installed pedestrian signal heads and push-buttons



Credit: PlanRVA

Richmond Regional Transportation Planning Organization

Ashland | Charles City | Chesterfield | Goochland | Hanover | Henrico | New Kent | Powhatan | Richmond

