

Richmond Regional
**Transportation
Planning
Organization**

SUPPORTED BY **PlanRVA**
THE REGIONAL
COMMISSION

2045 Long Range Growth Forecast Analysis

**RRTPO TECHNICAL ADVISORY COMMITTEE
MEETING
May 12, 2020**

**Presentation by:
Sulabh Aryal, AICP
Transportation Planning Manager**

Introduction

- Previously called SE Data Analysis Report
- Information only Item
- Component of ConnectRVA 2045
- The document examines historical trends as well as anticipated growth
- TAC to review the report and provide any comment(s) to staff.

Major Takeaways

- Since 1970 (to 2017) the Richmond Region has doubled its population.
- Chesterfield, followed by Powhatan and New Kent have experienced the greatest growth (percentage wise) whereas Chesterfield and Henrico have experienced greatest growth (in actual numbers)
- Population is expected to grow at 30% (CAGR of 1.05) over the next 28 years (2017-2045)
- Chesterfield is expected to see the largest population growth through 2045, followed by Henrico and Richmond (actual numbers)
- New Kent, Goochland and Powhatan will see the largest growth percentage wise (70%, 44%, 42%) through 2045.

Major Takeaways

- Employment has grown by 8 percent in last 10 years (2008-2017)
- Employment declined by 2% from 2008 to 2012.
- Employment is projected to grow by 25.6% over the next 28 years (CAGR of 0.82).
- Chesterfield and Henrico County will have most new jobs.
- Greatest Growth percentwise would be in New Kent, Goochland and Chesterfield.
- The largest employment sectors in the Region are Health Care, Educational Services, Accommodation and Food Services and Retail Trade.
- Based on current and future density 20 regional activity centers have been identified.

Population Historical Trends

Jurisdiction	1970	(1970-1980)%	1980	(1980-1990)%	1990	(1990-2000)%	2000	(2000-2010)%	2010	(2010-2012)%	2012	(2012-2017)%	2017
Charles City	6,158	8.7%	6,692	-6.1%	6,282	10.3%	6,926	4.8%	7,256	1.9%	7,392	-3.6%	7,126
Chesterfield	77,045	83.5%	141,372	48.0%	209,274	24.2%	259,903	21.7%	316,236	1.7%	321,718	5.9%	340,848
Goochland	10,069	16.8%	11,761	20.4%	14,163	19.1%	16,863	28.8%	21,717	1.0%	21,942	7.3%	23,536
Hanover	37,479	34.5%	50,398	25.6%	63,306	36.4%	86,320	15.7%	99,863	1.8%	101,666	7.8%	109,595
Henrico	154,463	17.0%	180,735	20.6%	217,881	20.4%	262,300	17.8%	308,935	3.0%	318,163	5.4%	335,283
New Kent	5,300	65.7%	8,781	19.0%	10,445	28.9%	13,462	36.9%	18,429	4.6%	19,277	10.7%	21,347
Powhatan	7,696	69.7%	13,062	17.3%	15,328	46.0%	22,377	25.3%	28,046	1.3%	28,410	2.6%	29,147
Richmond	249,332	-12.1%	219,214	-7.4%	203,056	-2.6%	197,790	3.2%	204,214	2.8%	209,896	7.1%	224,798
Region	547,542	15.4%	632,015	17.0%	739,735	17.1%	865,941	16.0%	1,004,696	2.4%	1,028,464	6.1%	1,091,680

Population Projected Growth

Jurisdiction	2017	2045	Total Growth Rate	Annual Growth Rate
Charles City County	7,126	8,540	19.84	0.71
Chesterfield County	340,848	437,512	28.36	1.01
Goochland County	23,536	33,738	43.35	1.55
Hanover County*	109,595	145,559	32.82	1.17
Henrico County	335,283	430,222	28.32	1.01
New Kent County	21,347	36,270	69.91	2.50
Powhatan County	29,147	41,248	41.52	1.48
Richmond City	224,798	280,141	24.62	0.88
Region Total	1,091,680	1,413,230	29.45	1.05

Employment Historic Trends

Jurisdiction	2008	(2008-2012)	(2008-2012)%	2012	(2012-2012)	(2008-2017)%	2017
Charles City	1,550	-131	-8.5%	1,419	249	17.5%	1,668
Chesterfield	113,428	3,006	2.7%	116,434	14,686	12.6%	131,120
Goochland	14,633	-2,124	-14.5%	12,509	1,457	11.6%	13,966
Hanover	50,290	-4,402	-8.8%	45,888	4,737	10.3%	50,625
Henrico	181,906	-3,241	-1.8%	178,665	12,575	7.0%	191,240
New Kent	3,911	-258	-6.6%	3,653	303	8.3%	3,956
Powhatan	5,562	-156	-2.8%	5,406	686	12.7%	6,092
Richmond	148,380	-2,112	-1.4%	146,268	5,776	3.9%	152,044
Region	519,660	-9,418	-1.8%	510,242	40,469	7.9%	550,711

Sectors Trends (2008-2017)

2008 to 2017	NAICS 2-Digit Code		2008	2017	(2008-2017)	(2008-2017)%
Decline	51	Information	14,046	7,512	-6,534	-46.5%
	31-33	Manufacturing	32,416	25,748	-6,668	-20.6%
	21	Mining	337	268	-69	-20.5%
	55	Management of Companies and Enterprises	25,628	21,249	-4,379	-17.1%
	92	Public Administration	36,496	32,398	-4,098	-11.2%
	52	Finance and Insurance	40,251	37,951	-2,300	-5.7%
	44-45	Retail Trade	57,344	57,215	-129	-0.2%
	71	Arts, Entertainment, and Recreation	12,969	12,967	-2	0.0%
Moderate Growth (0% to 15%)	42	Wholesale Trade	21,713	21,748	35	0.2%
	23	Construction	32,538	33,042	504	1.5%
	81	Other Services (except Public Administration)	17,193	17,861	668	3.9%
	53	Real Estate and Rental and Leasing	7,095	7,752	657	9.3%
	61	Educational Services	43,923	48,280	4,357	9.9%
	54	Professional, Scientific, and Technical Services	32,484	36,498	4,014	12.4%
High Growth (more than 15%)	62	Health Care and Social Assistance	64,818	77,978	13,160	20.3%
	72	Accommodation and Food Services	38,811	46,865	8,054	20.8%
	48-49	Transportation and Warehousing	15,549	20,059	4,510	29.0%
	22	Utilities	1,694	2,364	670	39.6%
	11	Agriculture, Forestry, Fishing and Hunting	691	1,008	317	45.9%
	56	Administrative and Support and Waste Management and Remediation Services	19,839	41,246	21,407	107.9%

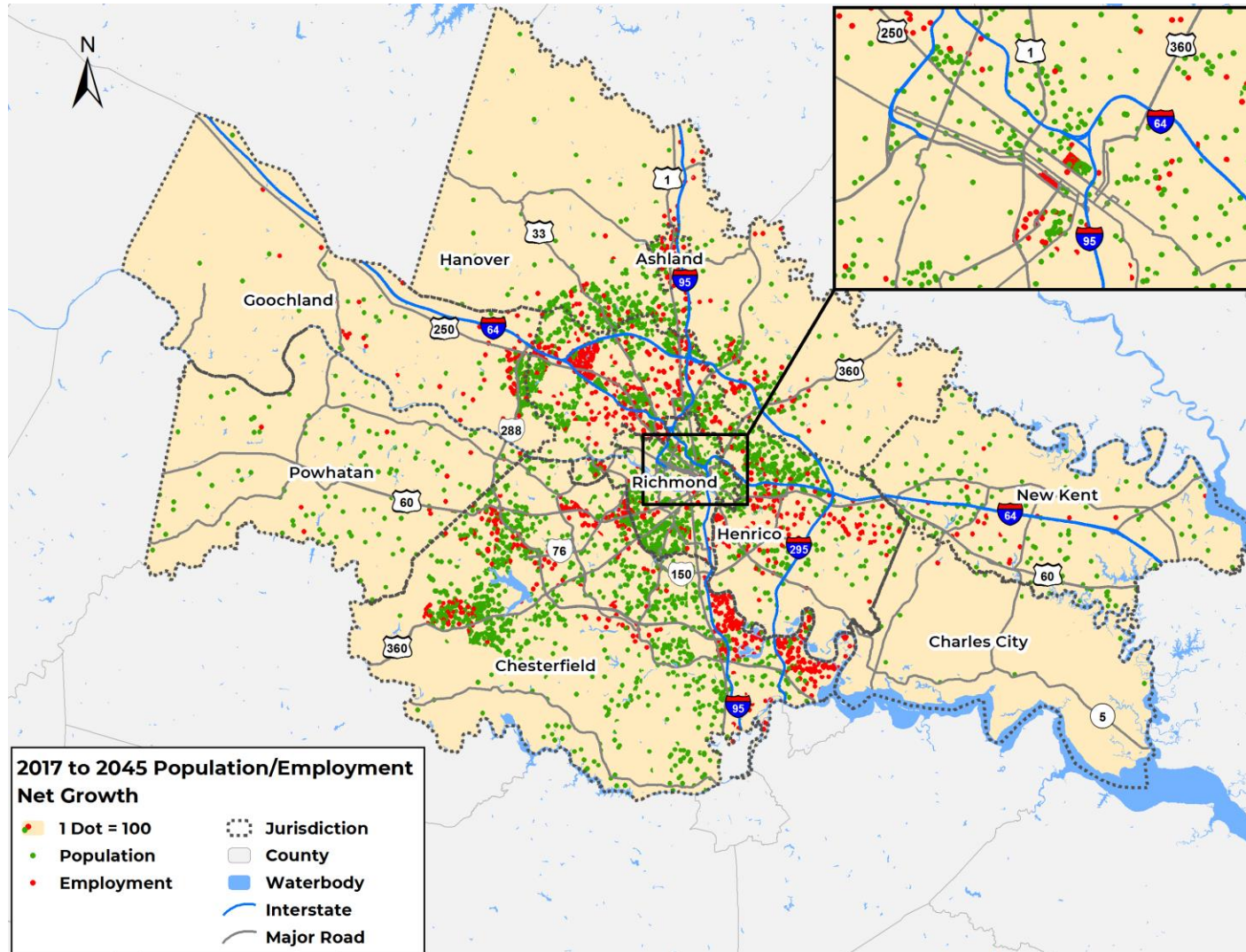
Top Employers in the Region

Employer	NAICS 2-Digit Code		2012		2017		Change
			Ranking	Employment	Ranking	Employment	
Capital One	52	Finance and Insurance	1	10,163	1	11,555	➡ 0
VCU Health System	55	Management of Companies and Enterprises	5	7,497	2	11,448	⬆ +3
Virginia Commonwealth University	61	Educational Services	2	9,337	3	10,164	⬇ -1
Henrico County School Board	61	Educational Services	3	8,794	4	9,000	⬇ -1
Chesterfield County School Board	61	Educational Services	4	8,753	5	8,611	⬇ -1
Bon Secours Richmond Health System	62	Health Care and Social Assistance	6	5,951	6	8,050	➡ 0
Walmart	44-45	Retail Trade	13	4,050	7	4,940	⬆ +6
County of Henrico	22	Utilities	10	4,564	8	4,585	⬆ +2
Hospital Corporation of America (HCA, Inc.) of Virginia	54	Professional, Scientific, and Technical Services	7	5,711	9	4,541	⬇ -2
City of Richmond	22	Utilities	8	5,048	10	4,495	⬇ -2
Richmond City Public Schools	61	Educational Services	9	5,000	11	4,482	⬇ -2
County of Chesterfield	22	Utilities	11	4,546	12	4,127	⬇ -1
Kroger	44-45	Retail Trade	20	2,496	13	3,959	⬆ +7
Amazon	48-49	Transportation and Warehousing	NA	NA	14	3,798	NA
Altria	42	Wholesale Trade	12	4,324	15	3,751	⬇ -3
SunTrust	55	Management of Companies and Enterprises	18	2,572	16	3,722	⬆ +2
Anthem	55	Management of Companies and Enterprises	19	2,557	17	3,716	⬆ +2
Department of Defense	92	Public Administration	16	2,776	18	3,567	⬇ -2
Hanover County Public Schools	61	Educational Services	14	3,215	19	3,257	⬇ -5
Veterans Affairs	92	Public Administration	17	2,584	20	2,840	⬇ -3

Employment Projected Growth

Jurisdiction	2017	2045	Total Growth Rate	Annual Growth Rate
Charles City County	1,668	1,832	9.83	0.35
Chesterfield County	131,120	177,742	35.56	1.27
Goochland County	13,966	20,507	46.84	1.67
Hanover County*	50,625	65,859	30.09	1.07
Henrico County	191,240	238,938	24.94	0.89
New Kent County	3,956	5,979	51.14	1.83
Powhatan County	6,092	7,528	23.57	0.84
Richmond City	152,044	173,089	13.84	0.49
Region Total	550,711	691,474	25.56	0.91

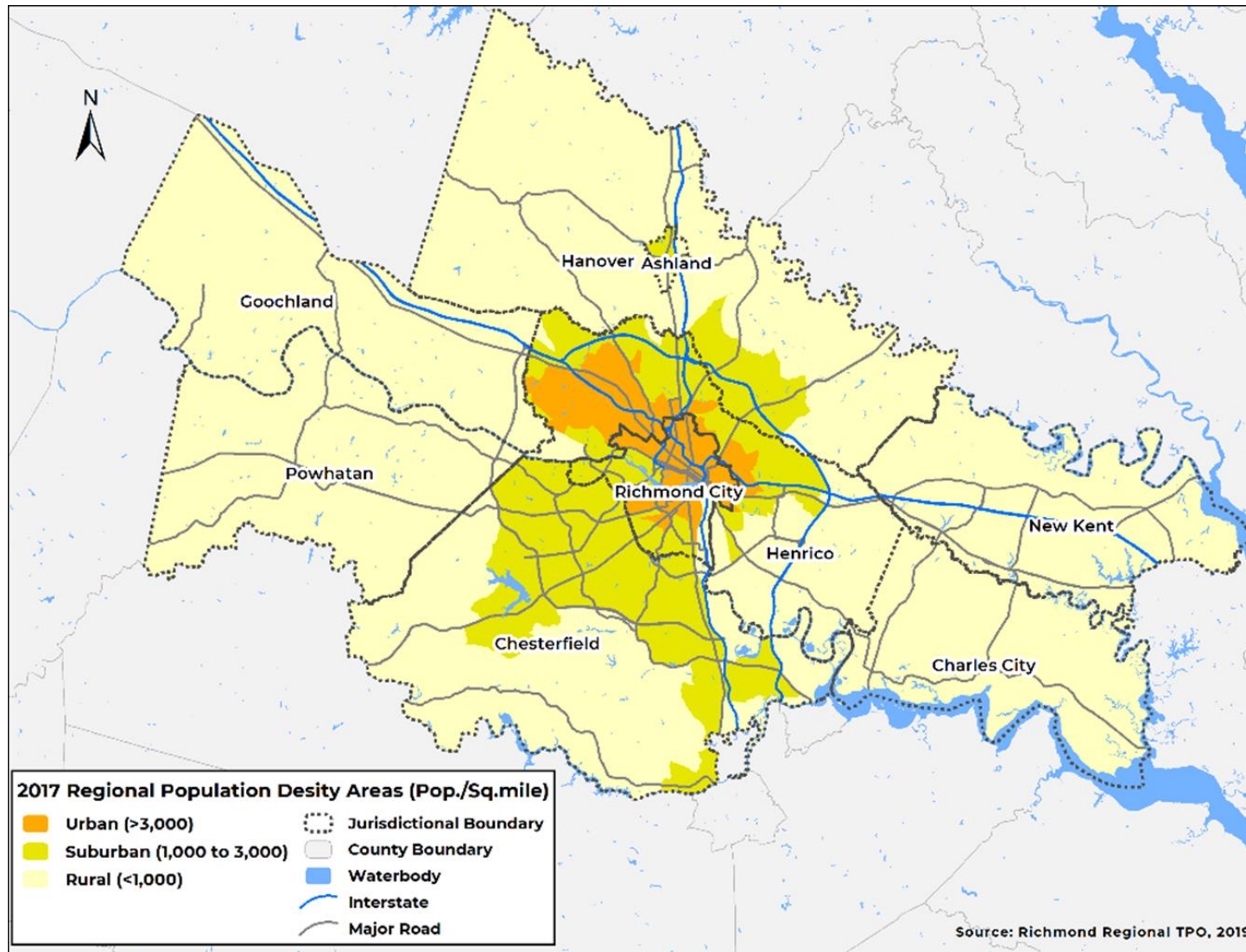
Population/Employment Growth



Density Areas

- Urban areas are defined as areas with a population/square mile of greater than 3,000
- Suburbanized areas are defined as areas with a population/square mile between 1,000 and 3,000
- Rural areas are defined as areas with a population/square mile of less than 1,000

Density Areas

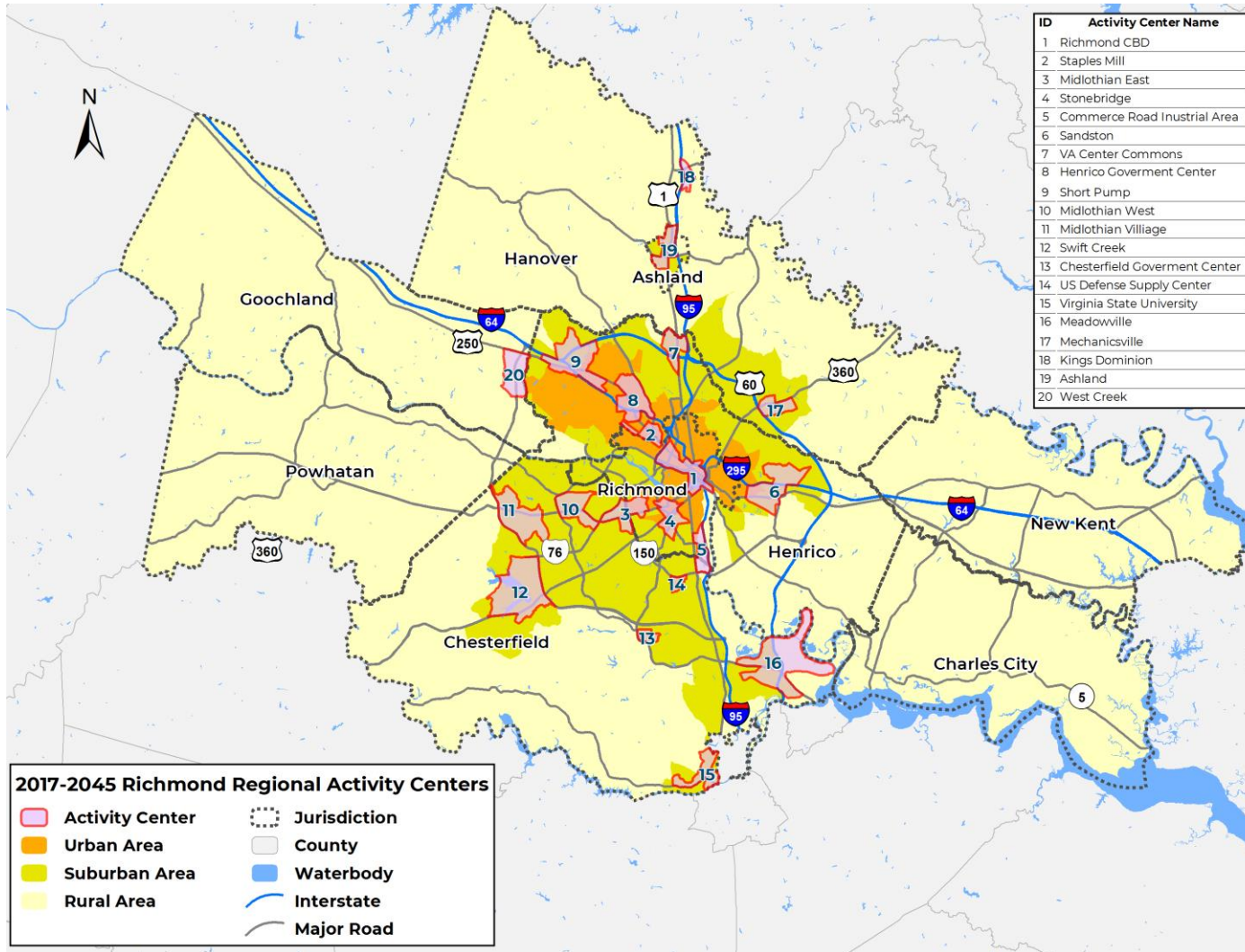


Regional Activity Centers

- Activity Center is a conceptual urban planning term that depicts areas of concentrated population and employment density
- Based on Department of Rail and Public Transportation (DRPT) report Multimodal System Design Guidelines in October 2013
- Both 2017 and 2045 Densities considered.

Activity Center Type	Activity Density [(Pop.+Emp)/Acre]]
P1 Rural or Village Center	2.13 or less
P2 Small Town or Suburban Center	2.13 to 6.63
P3 Medium Town or Suburban Center	6.63 to 13.75
P4 Large Town or Suburban Center	13.75 to 33.75
P5 Urban Center	33.75 to 70.0
P6 Urban Core	70.0 or more

Regional Activity Centers



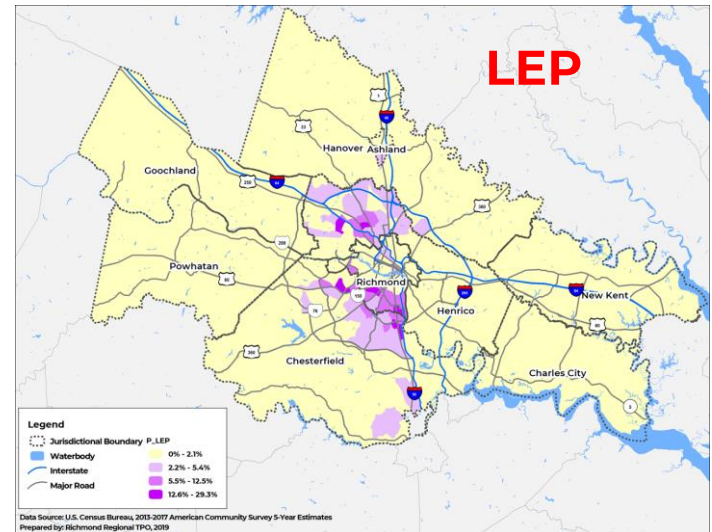
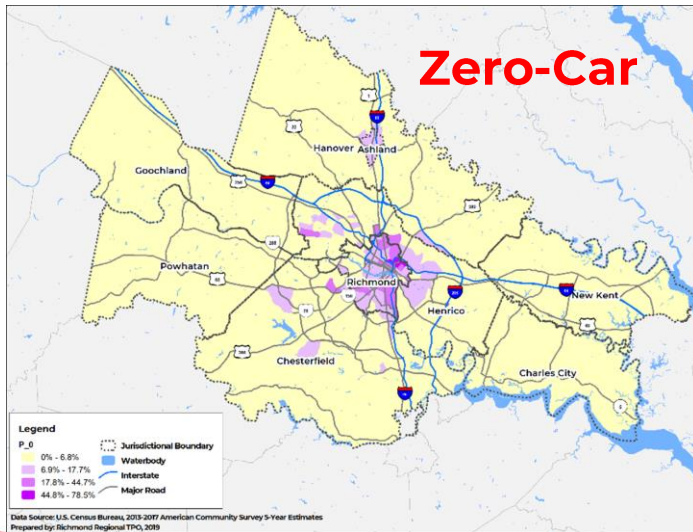
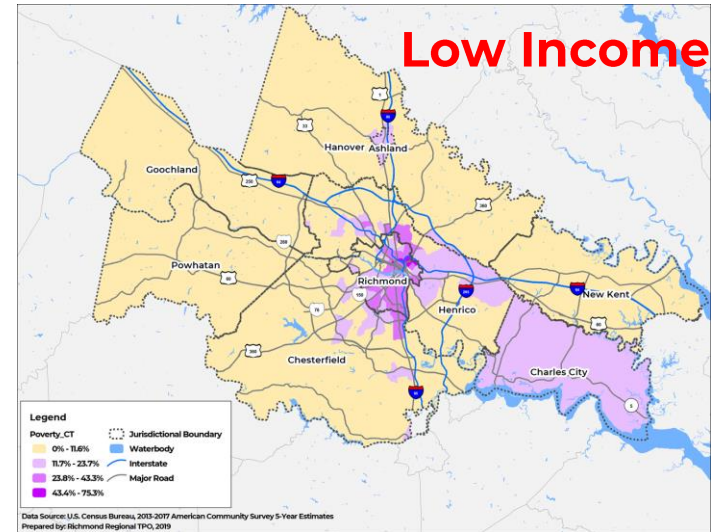
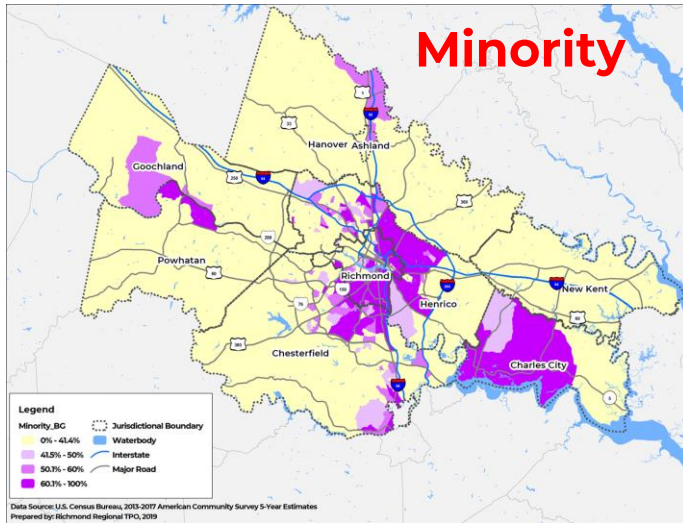
ID	Activity Center Name
1	Richmond CBD
2	Staples Mill
3	Midlothian East
4	Stonebridge
5	Commerce Road Inustrial Area
6	Sandston
7	VA Center Commons
8	Henrico Goverment Center
9	Short Pump
10	Midlothian West
11	Midlothian Villiage
12	Swift Creek
13	Chesterfield Goverment Center
14	US Defense Supply Center
15	Virginia State University
16	Meadowville
17	Mechanicsville
18	Kings Dominion
19	Ashland
20	West Creek

Environmental Justice Datasets

- Datasets developed based on 5-year ACS for the base year 2017.
- Areas are designated areas of concentration if the percentage of the traditionally disadvantaged population exceeds the average percentage of the target population in the region
- ConnectRVA 2045 uses these areas so identified as a baseline to investigate ways to better include underserved populations in the region through identification of transportation priorities and funding opportunities.

Environmental Justice Datasets	Universe	Regional Average
Minority Population	Total Population	41.40%
Low Income Population	Population for whom Poverty Status Is determined	11.62%
Individuals with Disabilities	Population for whom disability status is determined	11.60%
Zero Car Households	Households for whom vehicle ownership status is determined	6.80%
Elderly Population	Total Population	13.90%
Limited English Proficiency (LEP) Population	Population for whom limited English speaking status is determined	2.10%

Environmental Justice Datasets



Questions?

Sulabh Aryal
Transportation Planning Manager
saryal@PlanRVA.org

PlanRVA

9211 Forest Hill Avenue, Suite 200
Richmond, Virginia 23235