

Richmond Regional
**Transportation
Planning
Organization**

SUPPORTED BY **PlanRVA**
THE REGIONAL
COMMISSION

Equity and Environmental Justice

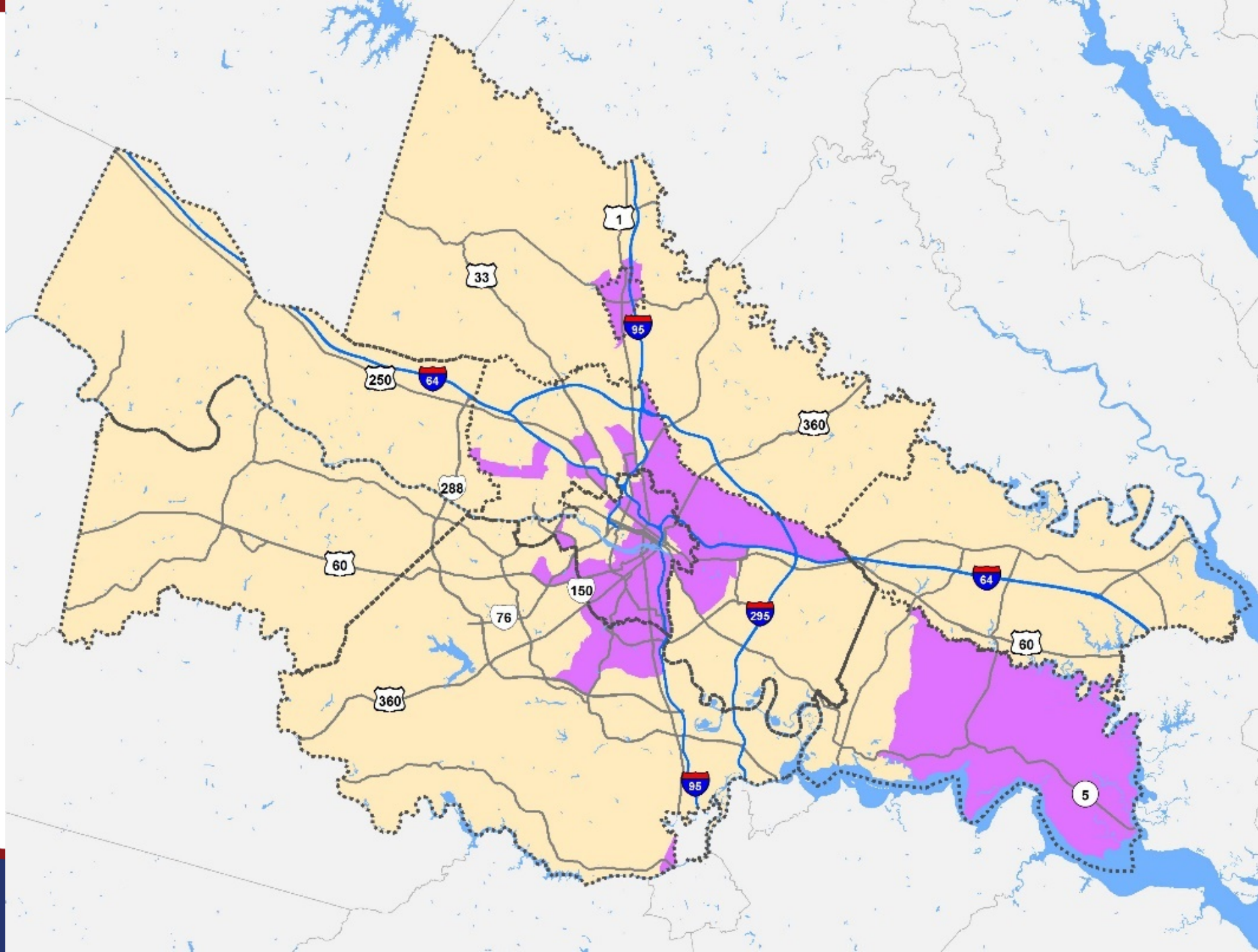
- Environmental Justice is fair treatment and meaningful involvement of all people
- Fair treatment means no group bears disproportionate share of negative consequences of federal action or investment
- Federal mandate for EJ comes from Executive Order 12898
 - Focus on people of color and with low incomes
- Other federal laws also guide assessment of equity such as the Civil Rights Act or Americans with Disabilities Act

Identifying Equity Emphasis Areas

- Six indicators of potential disadvantage
 - People of Color
 - People in Poverty
 - People with Limited English Proficiency
 - Older Adults (65+)
 - People with Disabilities
 - Zero-Car Households
- Broken into primary and secondary indicators based on regional characteristics and federal environmental justice requirements

Identifying Equity Emphasis Areas

- For each census tract, indicator given a score of 0 – 3
 - 0 → Indicator measure at or below regional average
 - 1 → up to 1 standard deviation above regional average
 - 2 → up to 2 standard deviations above regional average
 - 3 → 2 or more standard deviations above regional average
- Multiplier applied to weigh primary factors more heavily
 - 1.5 for primary
 - 0.5 for secondary
- Weighted indicator scores summed for overall score, 3 or more indicates community of concern



Richmond Regional
**Transportation
Planning
Organization**

SUPPORTED BY **PlanRVA**

Measuring Impacts of Plan

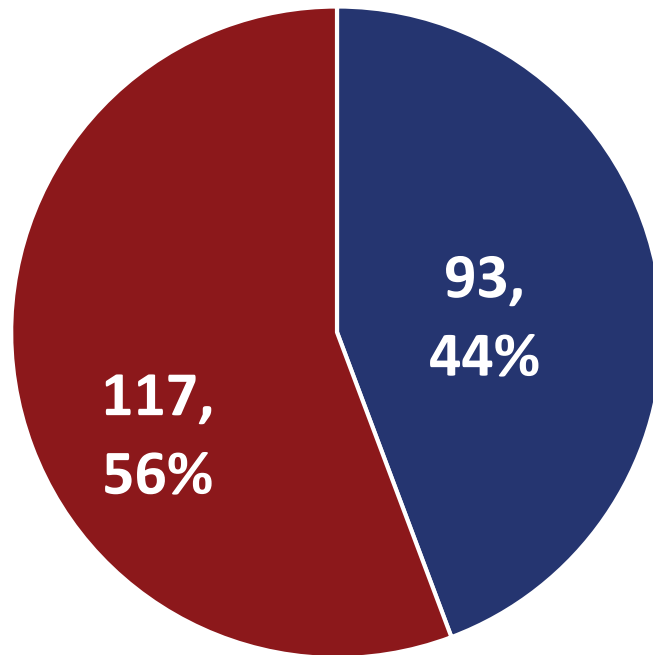
- Evaluation for ConnectRVA 2045 is a regionwide analysis
- Individual projects also go through another project-level EJ analysis as part of NEPA process
- Evaluate burdens and benefits of slate of investments for equity emphasis areas (EEA) and non-EEA areas
 - Equity in Planned Investments
 - Equity in Access

Equity in Planned Investments

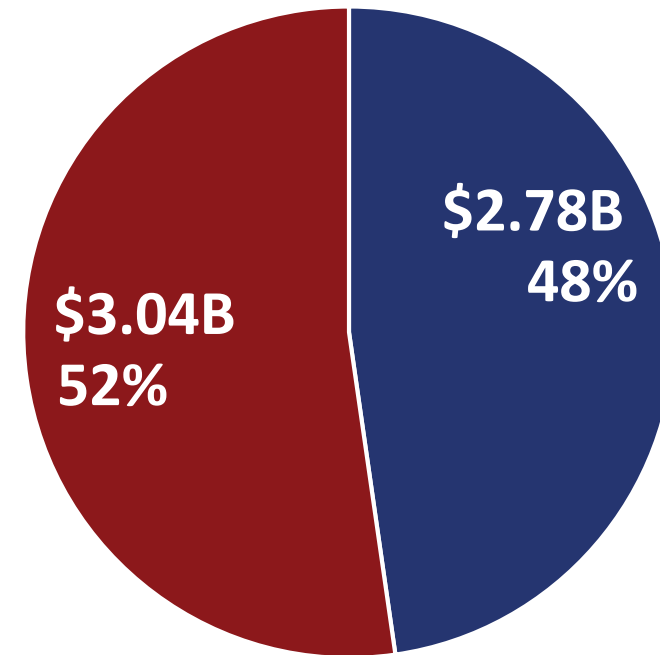
- Compares number of projects and cost of projects that serve at least one equity emphasis area and those that do not
- Limited to projects in the constrained budget and programmatic bridge rehabilitation projects (excludes committed and private/local projects)
- Uses same standardized tiers and buffers used in project evaluation (**Tier 1:** 0.5 miles, **Tier 2:** 1 mile, **Tier 3:** 2 miles)
- Purpose it to ensure proposed investments are fairly distributed throughout the region

Equity in Planned Investments

Number of Projects Serving EEA



Value of Projects Serving EEA



Equity in Access

- On-going evaluation
- Quantifies benefits of entire set of investments with respect to accessibility to destinations for different groups of people
- Multimodal analysis (auto, transit, bike, walk)