

Unpacking the Census: Impact on Schools

DR. GENEVIEVE SIEGEL-HAWLEY, VCU

DR. TOM SHIELDS UNIV. OF RICHMOND

SPECIAL THANKS TO:

DR. JOHN MOESER, UR AND VCU

MR. BRIAN KOZIOL, HOME

NINA MAUNEY

GIS TECHNICIAN, SPATIAL ANALYSIS LAB

UNIV. OF RICHMOND

EVELYN JEONG & EMILY ROUTMAN

INTERNS, SPATIAL ANALYSIS LAB

UNIV. OF RICHMOND



Housing

Notable Trends:

- Growth of poverty in suburban areas
- Children living in poverty extremely high within City, growing in counties
- Disparities in poverty rates categorized by race/ethnicity
 - Hispanic/Latino poverty rate growing fastest
- Falling income in urban areas and close suburbs
- Significant growth in foreign-born population living in suburban areas

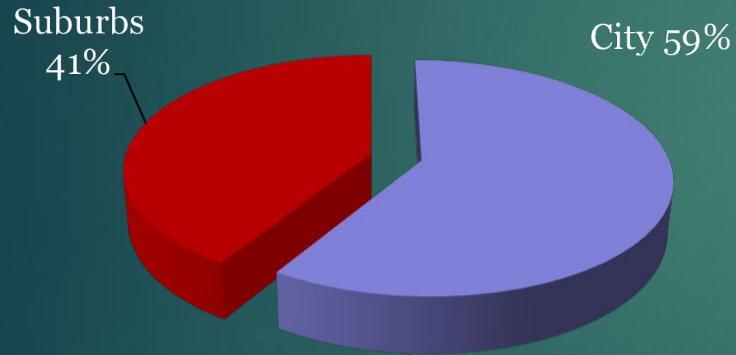
2017 Poverty Thresholds (U.S.)

- Based on American Communities Survey (ACS) 5 year Estimates
- Poverty threshold for a 4-person family: \$24,600
- Poverty threshold for one person:
 - Under age 65: \$12,752
 - 65 years and over: \$11,756

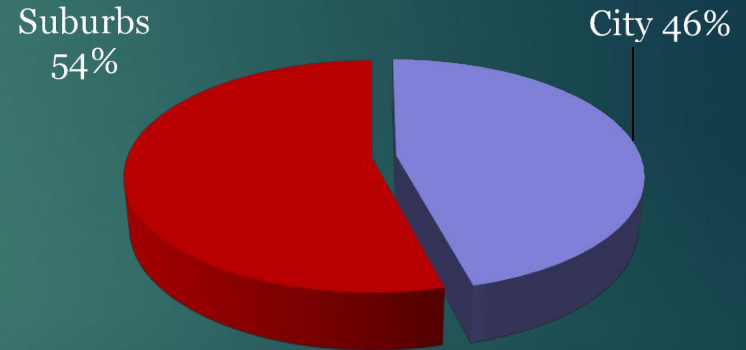
Numbers of People in Poverty

(2000 Census, 2013-2017 American Community Survey 5-Year Estimates)

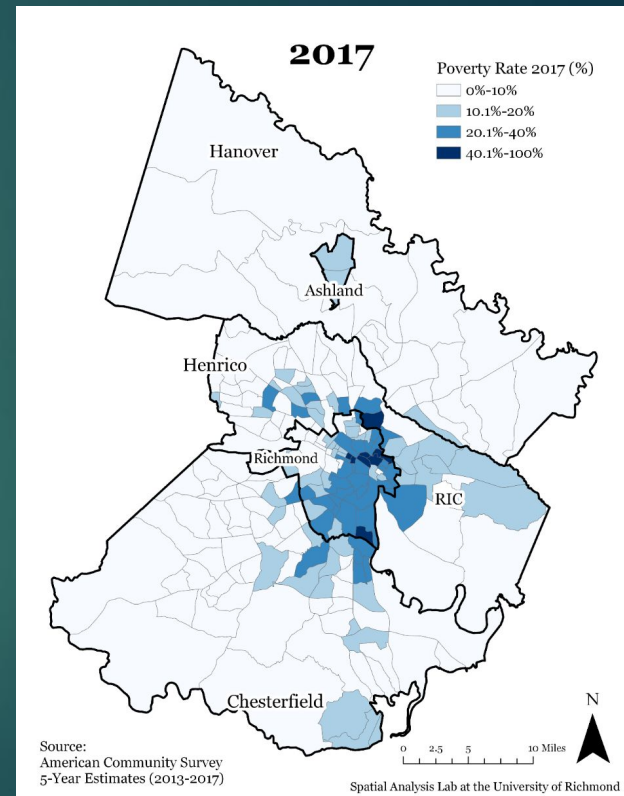
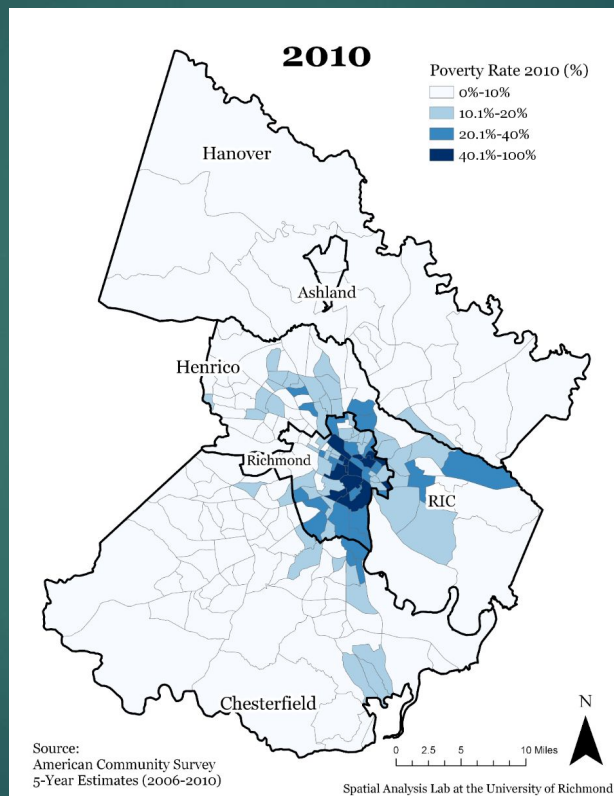
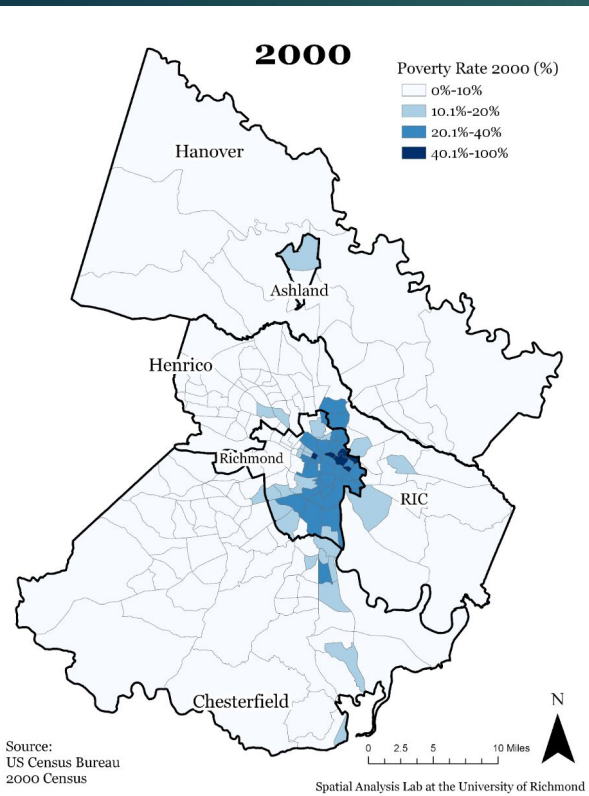
2000



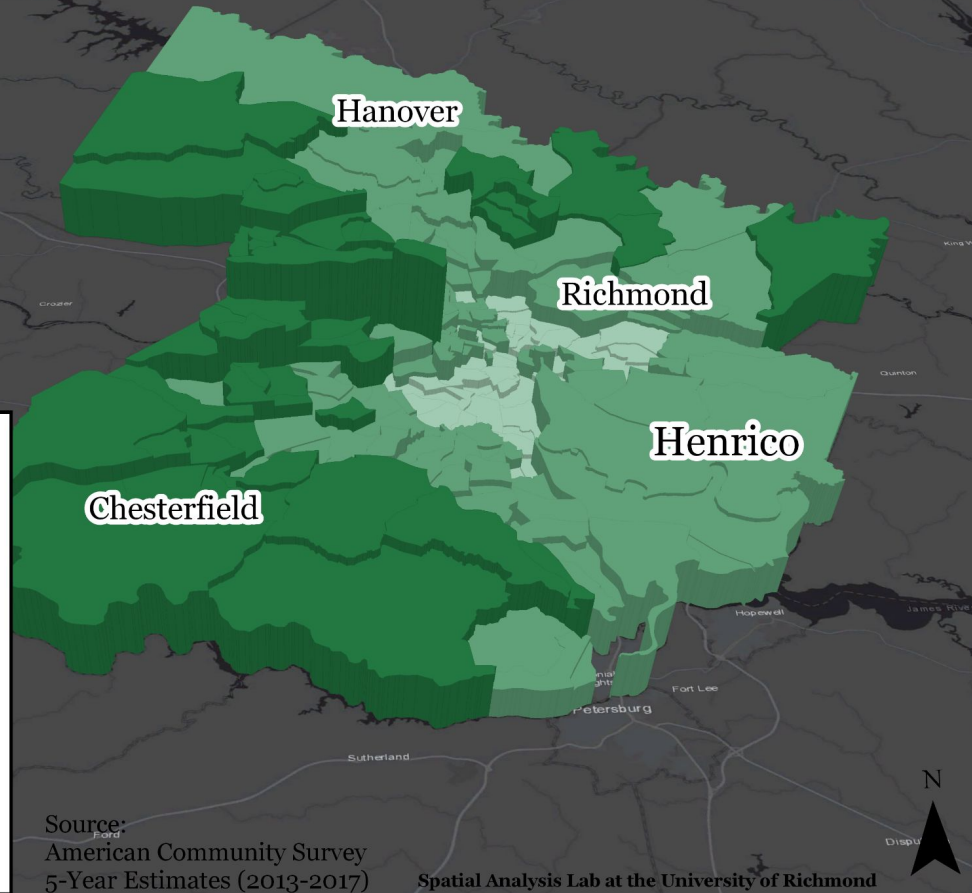
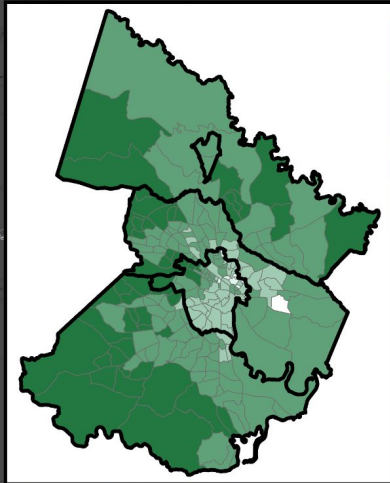
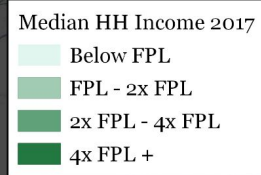
2017



Since 2000, the number of people living in poverty has increased by more than 100% in each county.



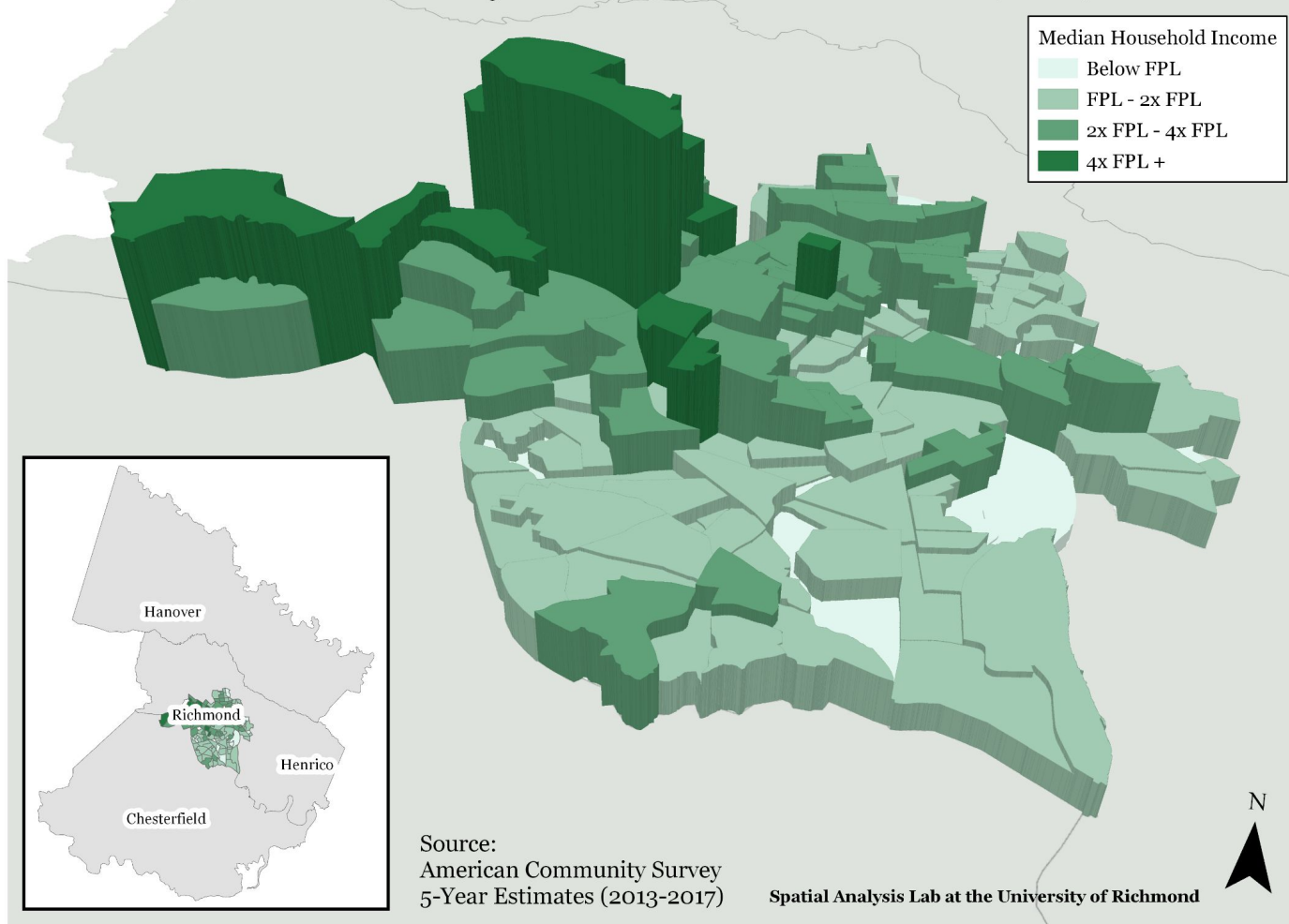
Median Household Income, 2017



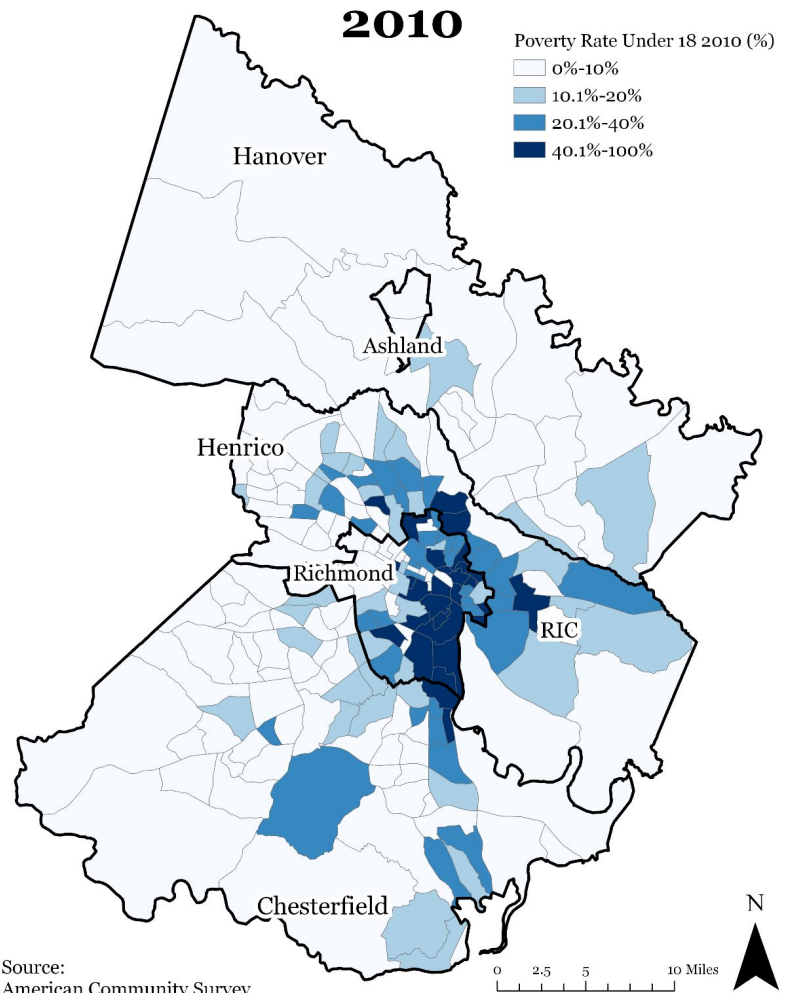
Source:
American Community Survey
5-Year Estimates (2013-2017)

Spatial Analysis Lab at the University of Richmond

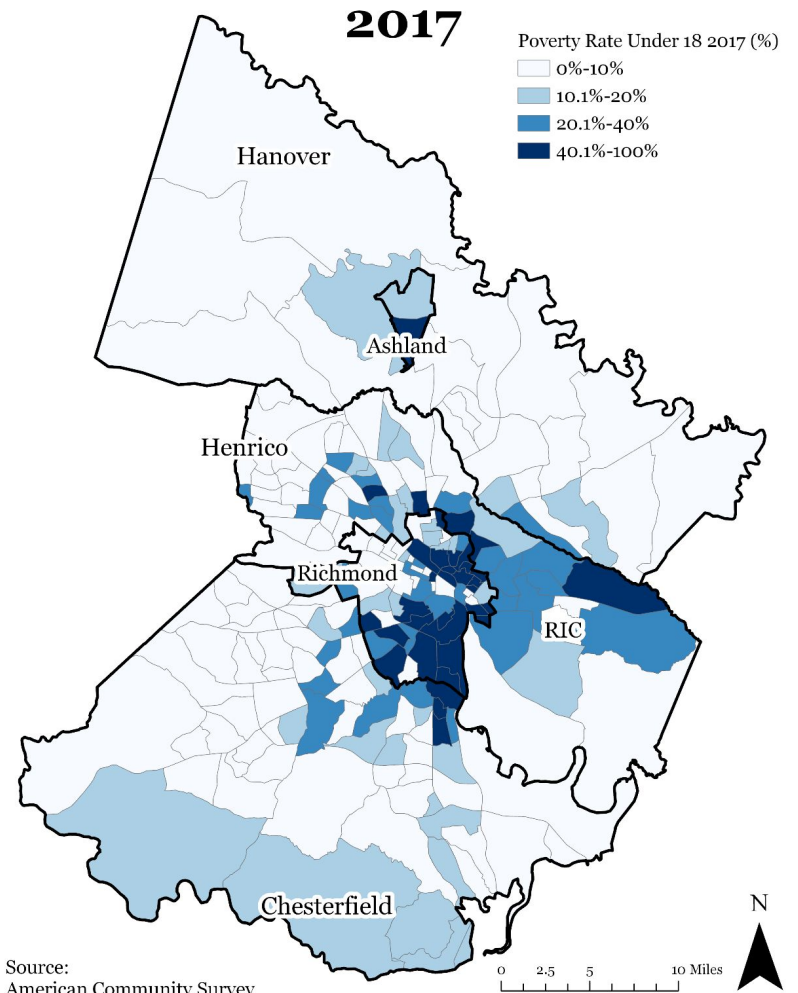
Richmond City Median Household Income, 2017



Since 2000, the number of children under 18 living in poverty has increased by more than 100% in each county.



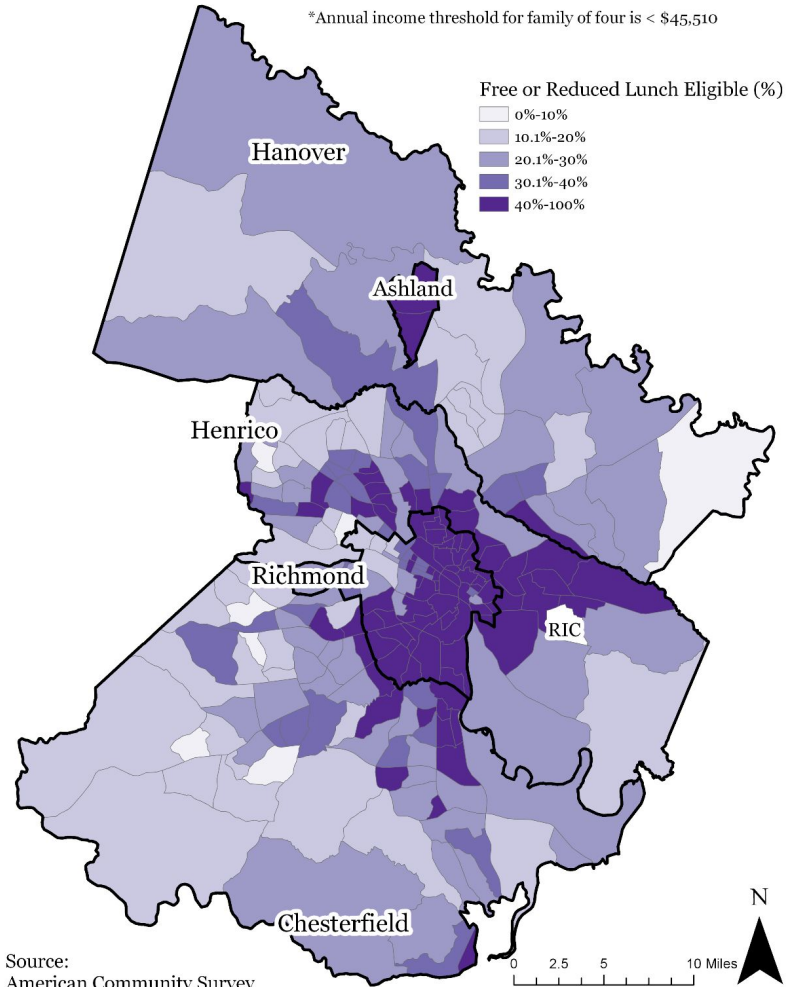
Spatial Analysis Lab at the University of Richmond



Spatial Analysis Lab at the University of Richmond

Families of Four Qualifying for Free or Reduced Lunches* (2017)

*Annual income threshold for family of four is < \$45,510



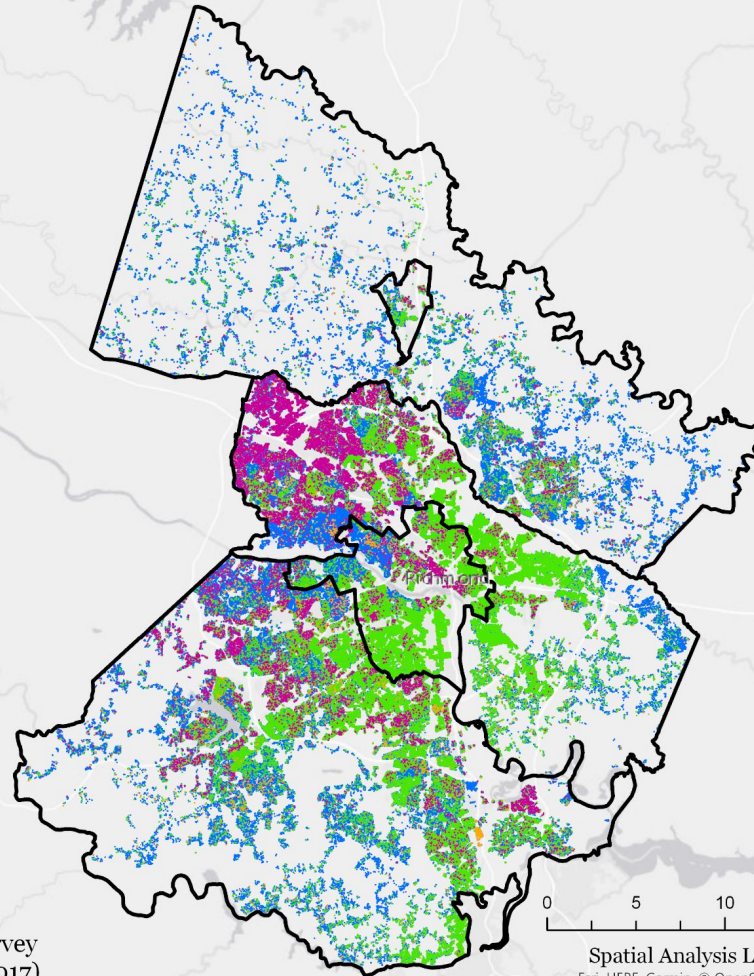
Source:
American Community Survey
5-Year Estimates (2013-2017)

Spatial Analysis Lab at the University of Richmond

Race and Place in the Greater Richmond Region

1 Dot = 2 People

- Asian
- Black
- Other
- White



Source:
American Community Survey
5-Year Estimates (2013-2017)

0 5 10 20 Miles

Spatial Analysis Lab at the University of Richmond
Esri, HERE, Garmin, © OpenStreetMap contributors, and the GIS user community

Hispanic / Latino in the Greater Richmond Region

1 Dot = 1 Person

■ Hispanic

Source:
American Community Survey
5-Year Estimates (2013-2017)

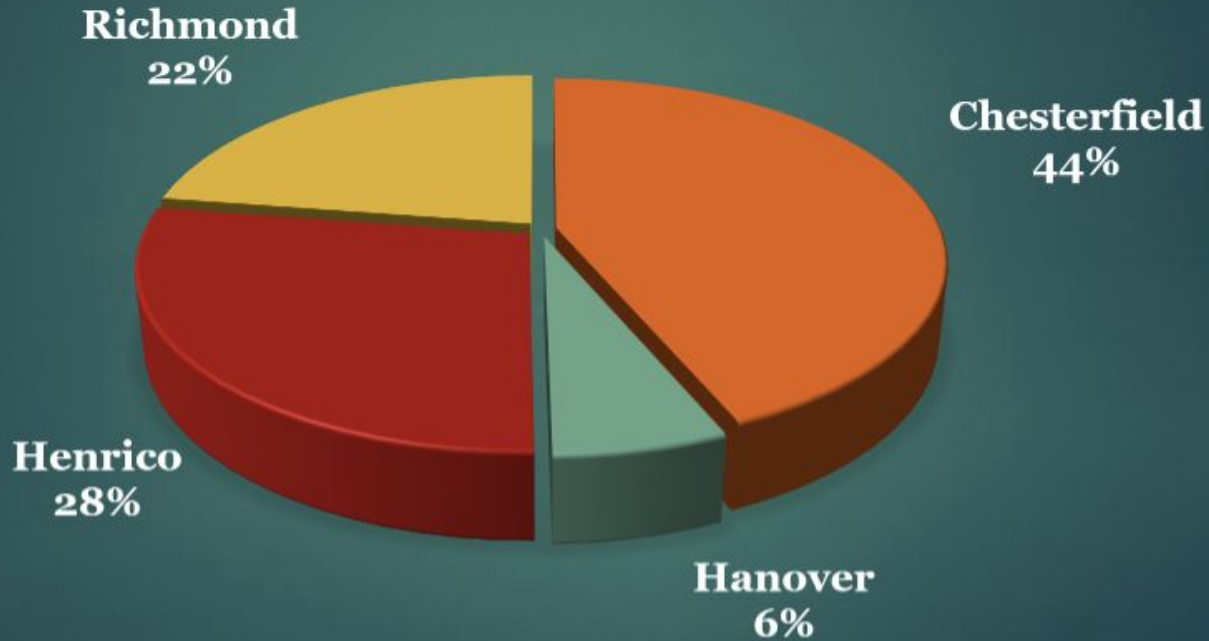
0 5 10 20 Miles

Spatial Analysis Lab at the University of Richmond

Esri, HERE, Garmin, © OpenStreetMap contributors, and the GIS user community



Hispanic/Latino % of Region



White in the Greater Richmond Region

1 Dot = 1 Person

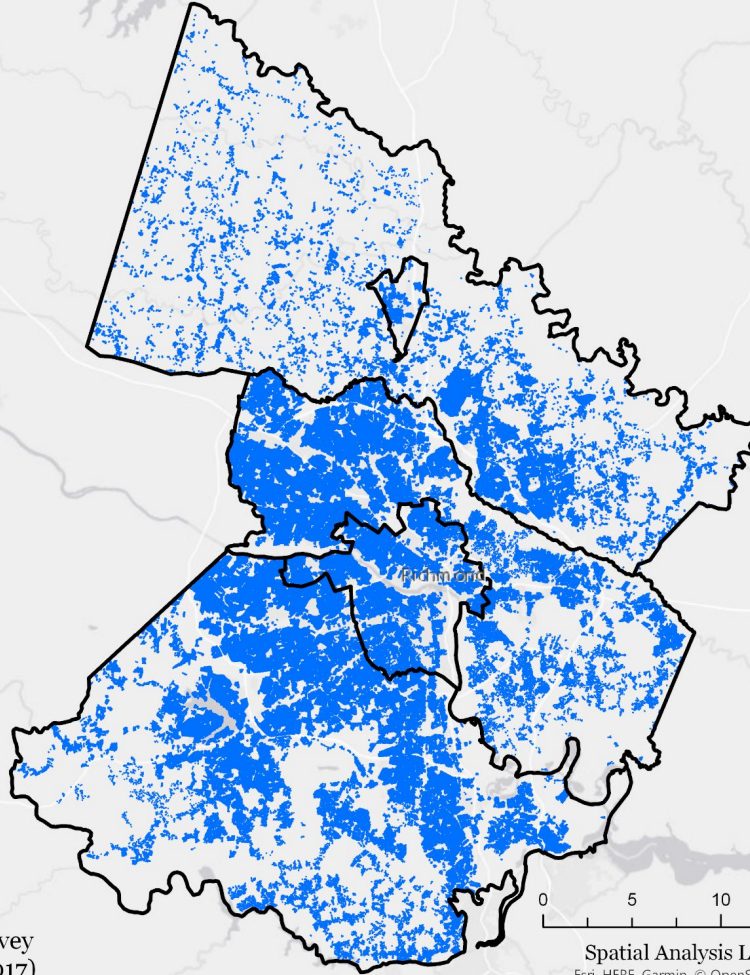
■ White

Source:
American Community Survey
5-Year Estimates (2013-2017)

0 5 10 20 Miles

Spatial Analysis Lab at the University of Richmond

Esri, HERE, Garmin, © OpenStreetMap contributors, and the GIS user community



Black in the Greater Richmond Region

1 Dot = 1 Person

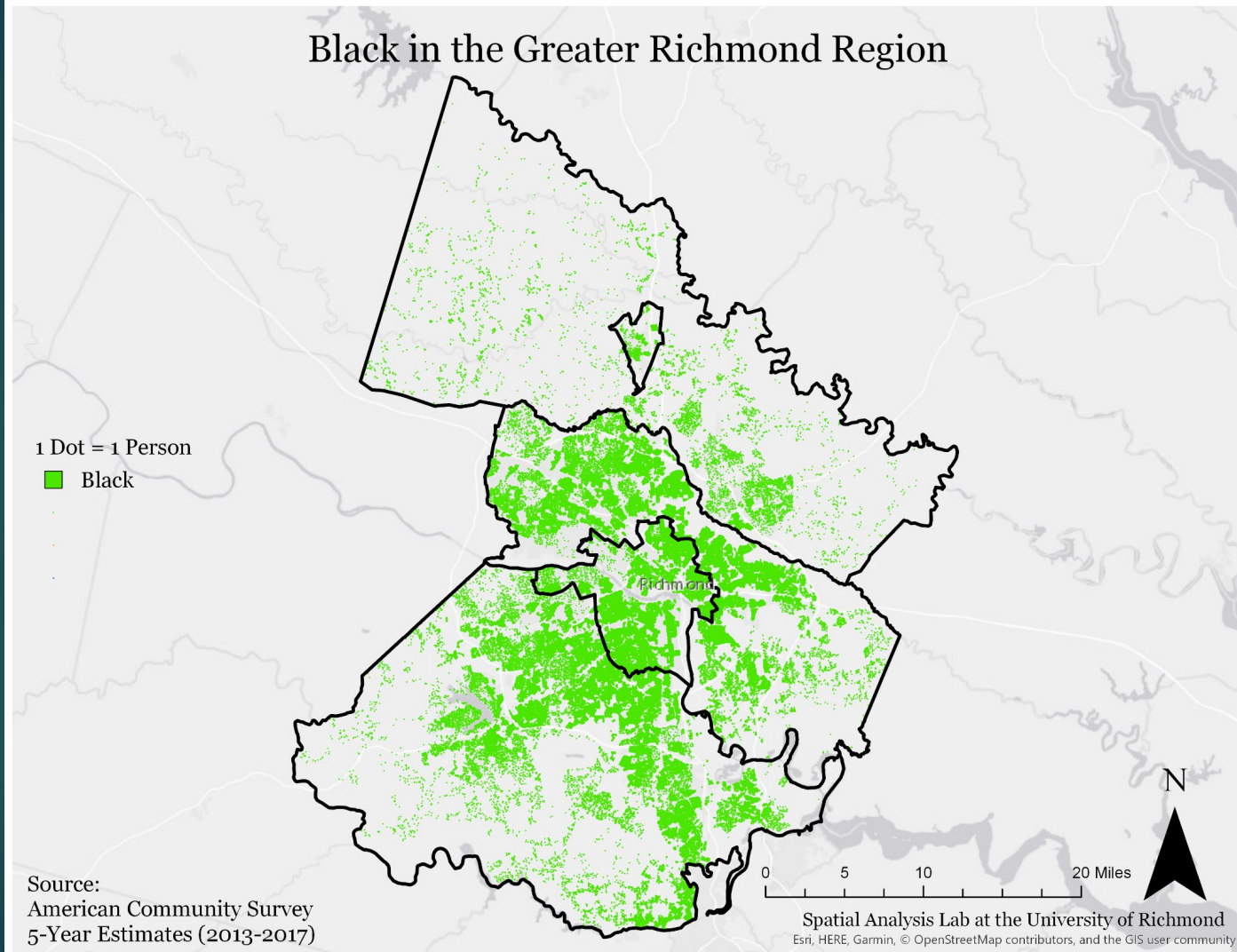
■ Black

Source:
American Community Survey
5-Year Estimates (2013-2017)

0 5 10 20 Miles

Spatial Analysis Lab at the University of Richmond

Esri, HERE, Garmin, © OpenStreetMap contributors, and the GIS user community



Asian in the Greater Richmond Region

1 Dot = 1 Person

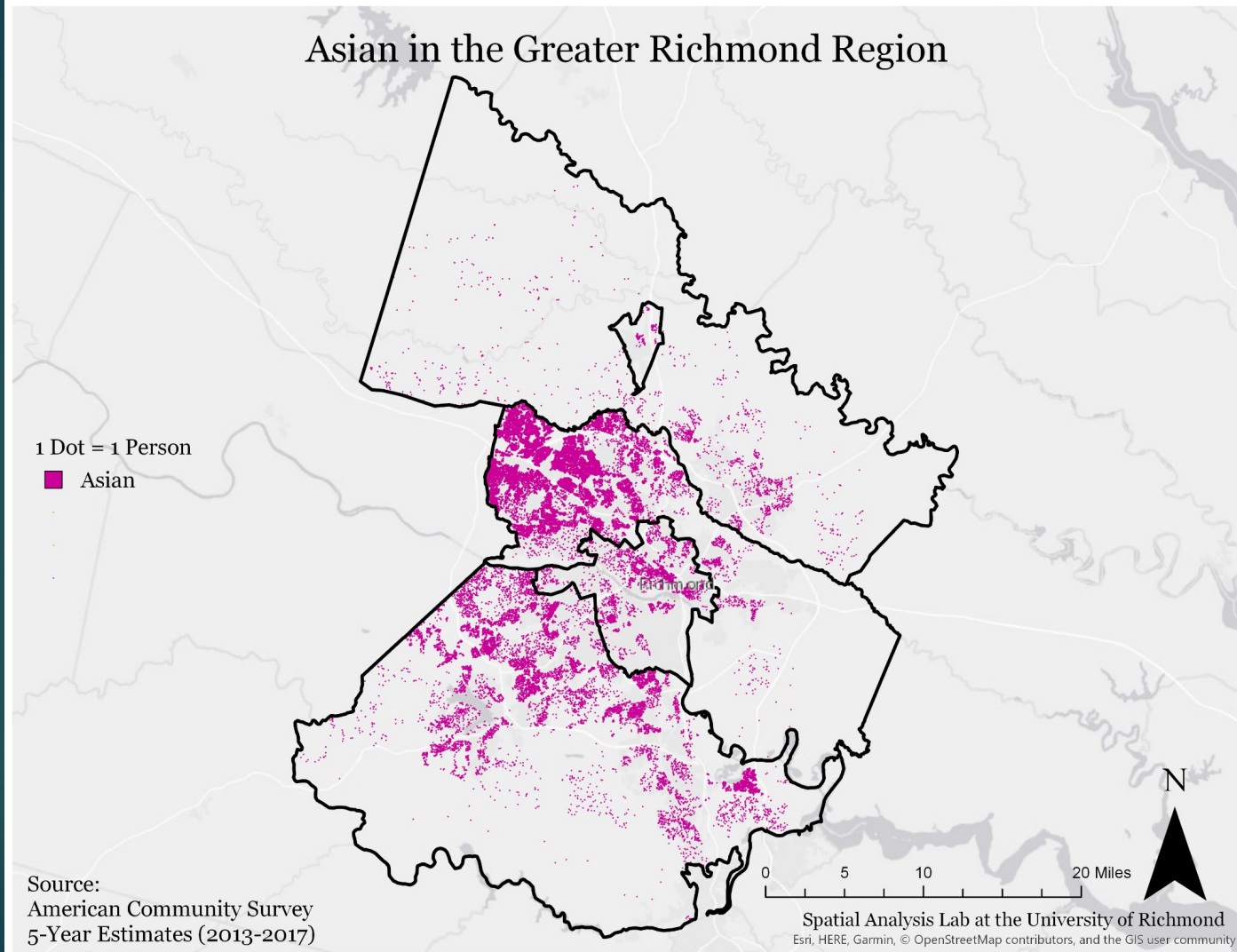
■ Asian

Source:
American Community Survey
5-Year Estimates (2013-2017)

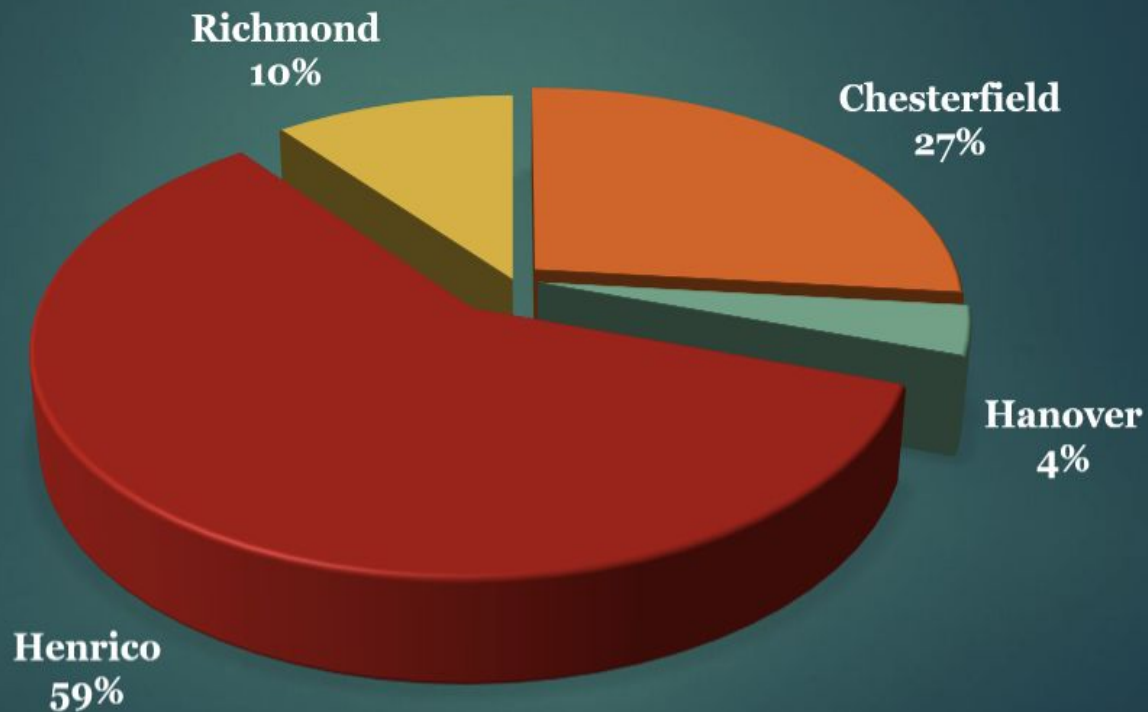
0 5 10 20 Miles

Spatial Analysis Lab at the University of Richmond

Esri, HERE, Garmin, © OpenStreetMap contributors, and the GIS user community



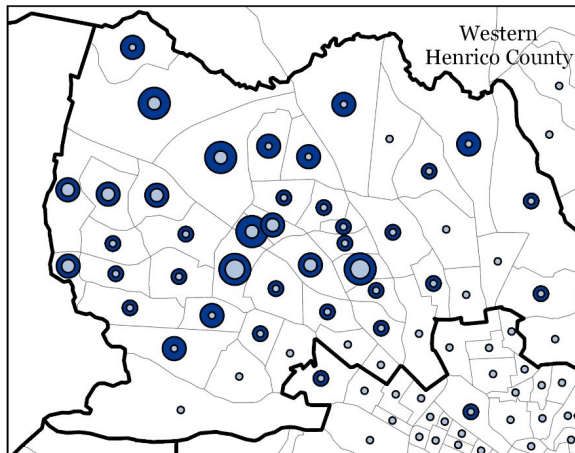
Asian Population % of Region



Immigration

- Measured by the “Foreign Born Population” in the 2017 ACS
- Year of Entry
- Place of Birth for the Foreign-Born Population

Recent Entry (Post 2010) Foreign Born Population, 2017

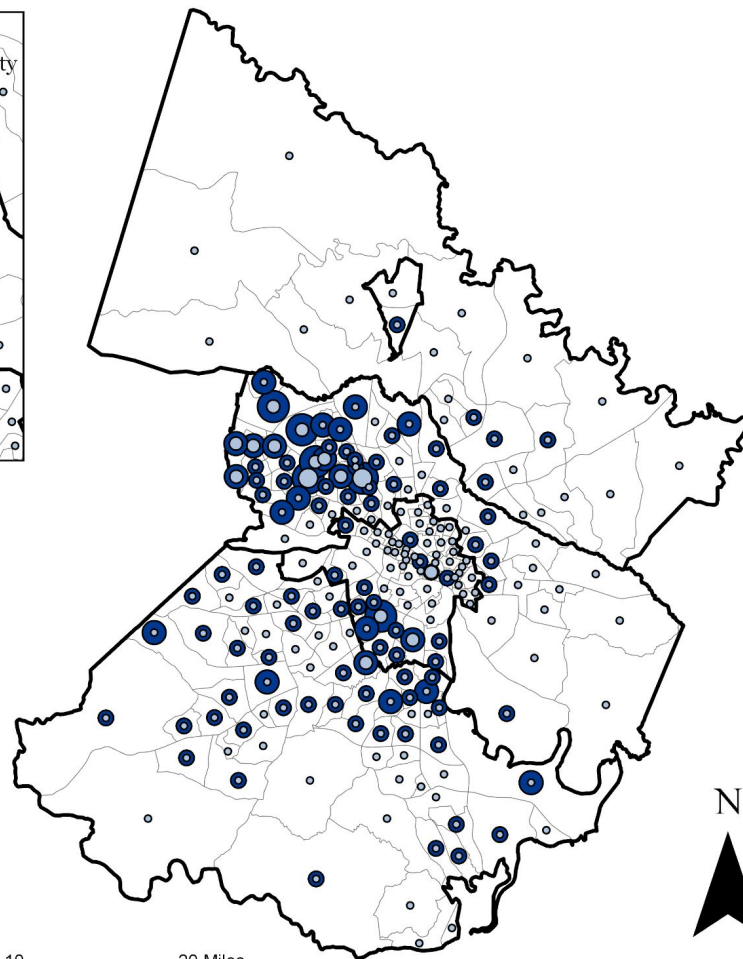


Recent Entry Foreign Born Population

- 0 - 250
- 251 - 750
- 751 - 1500
- 1501 - 3039

Total Foreign Born Population

- 0 - 250
- 251 - 750
- 751 - 1500
- 1501 - 3039

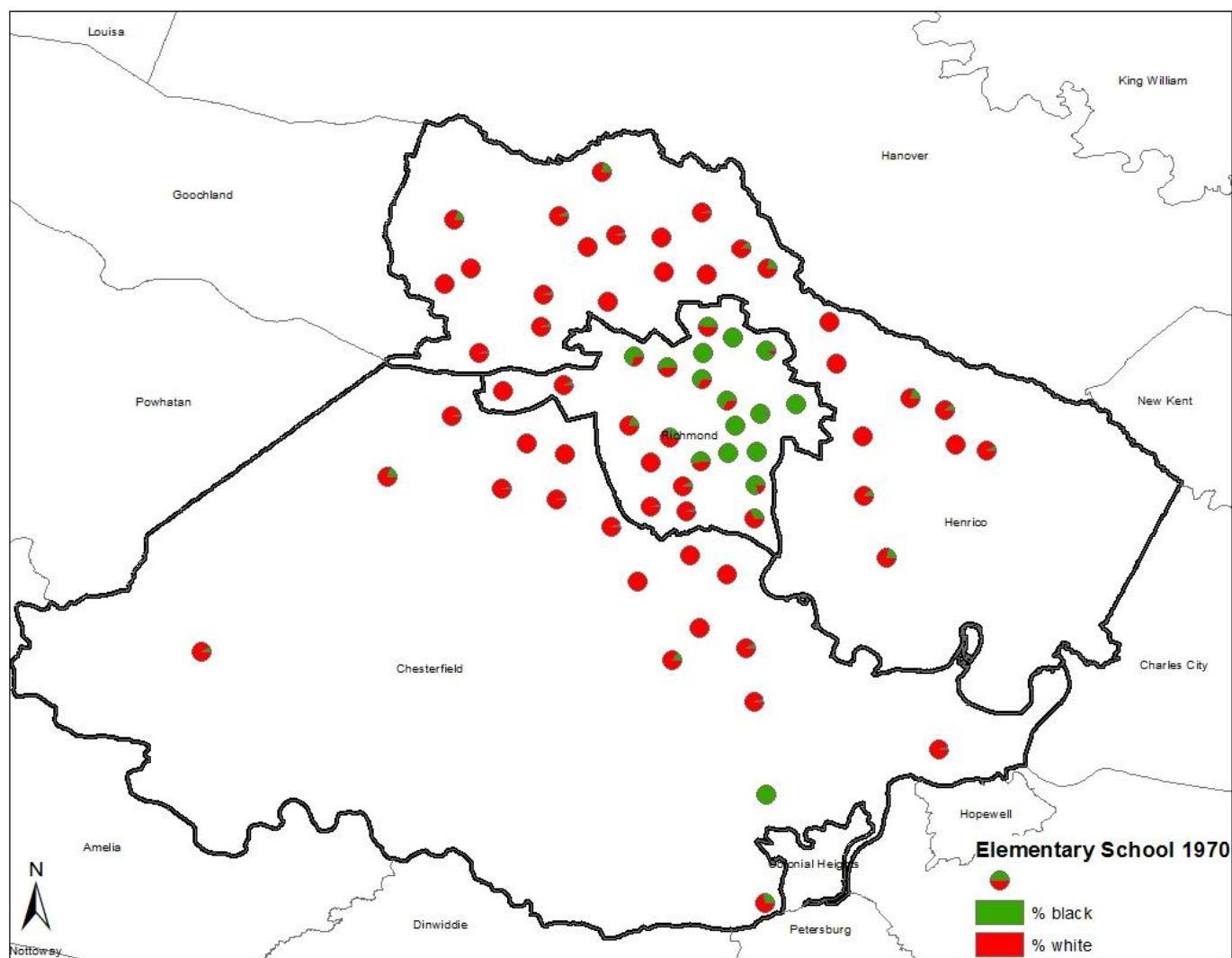


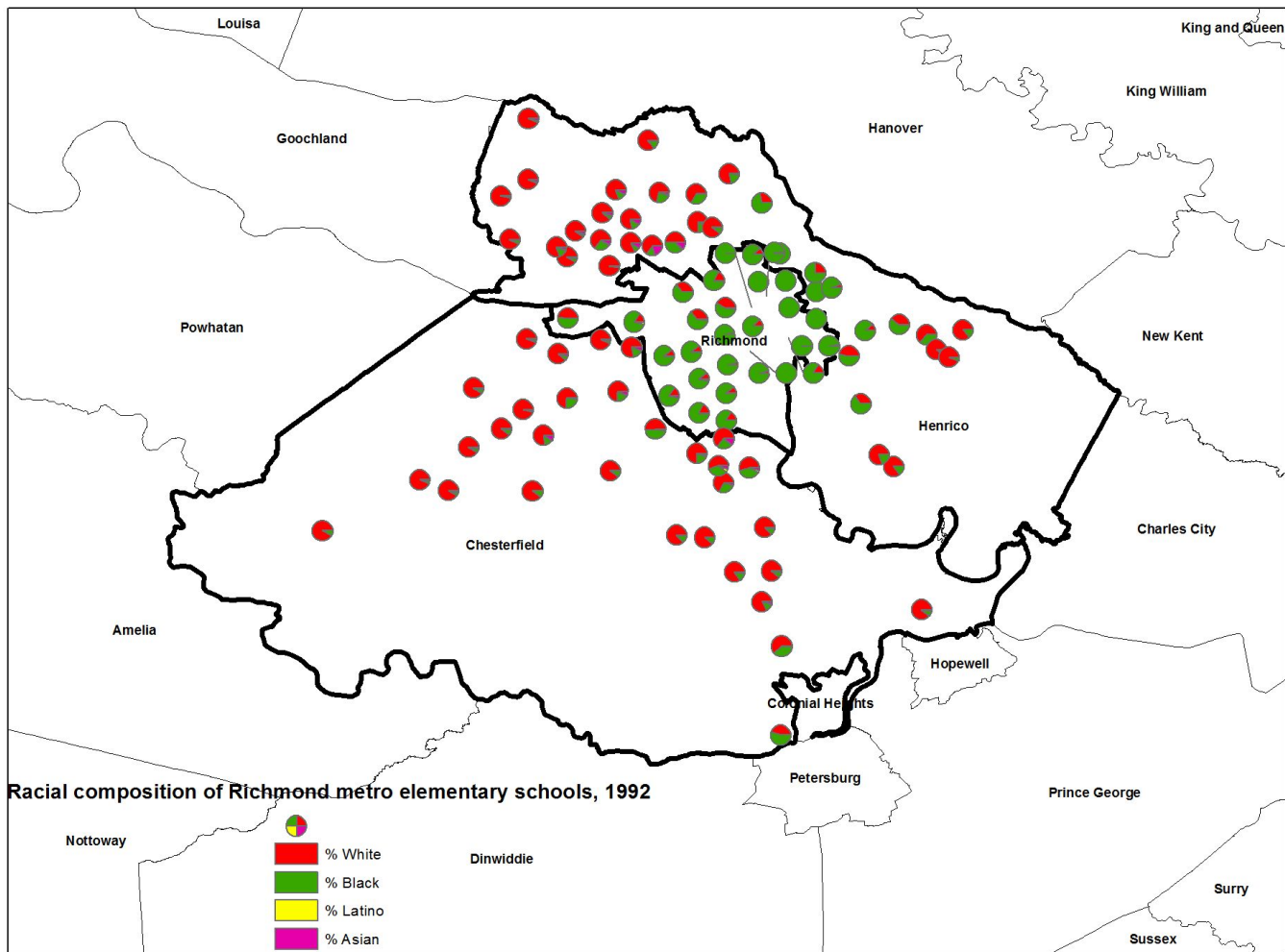
Source:
American Community Survey
5-Year Estimates (2013-2017)

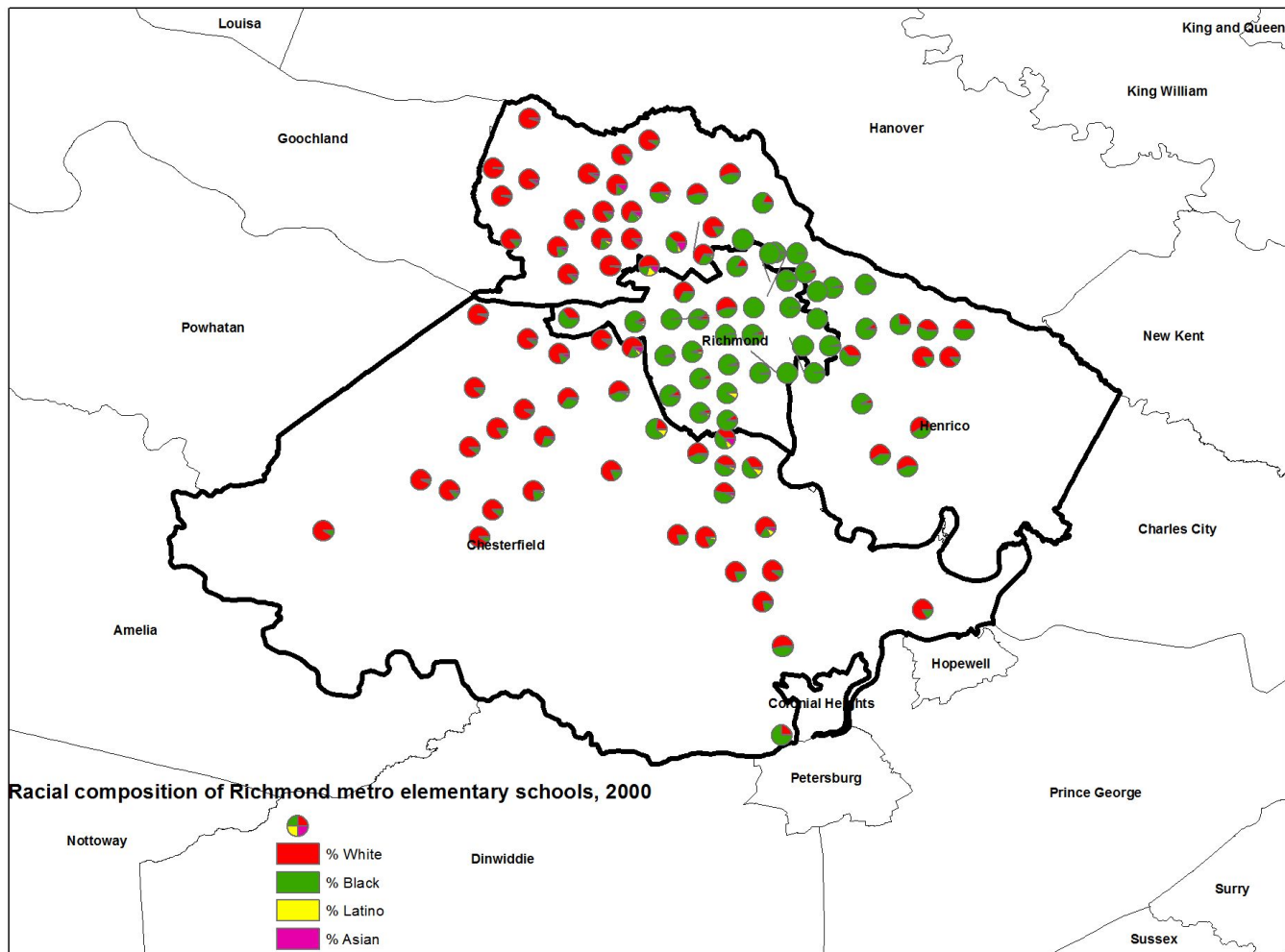
0 5 10 20 Miles

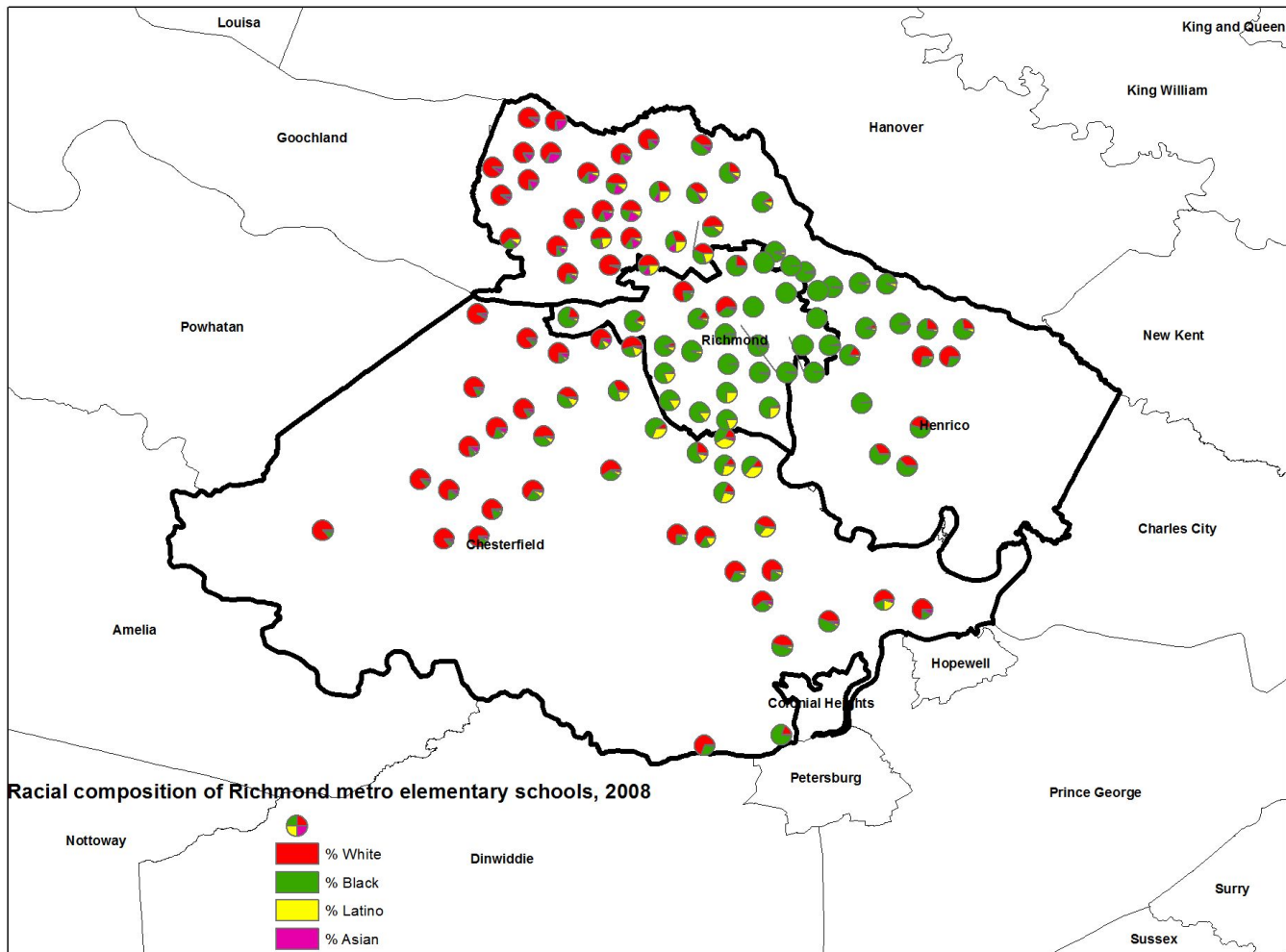
Spatial Analysis Lab at the University of Richmond

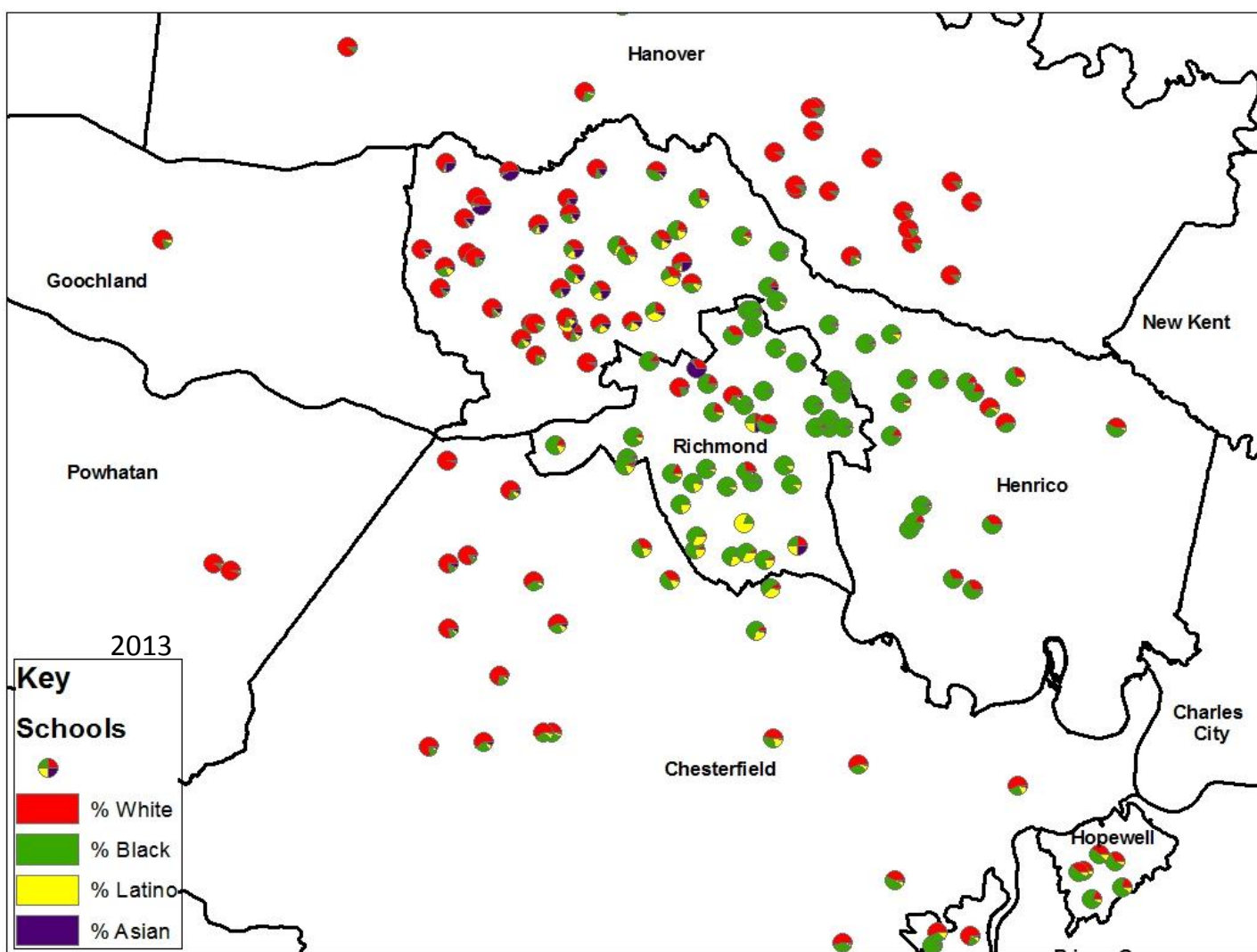
Schools

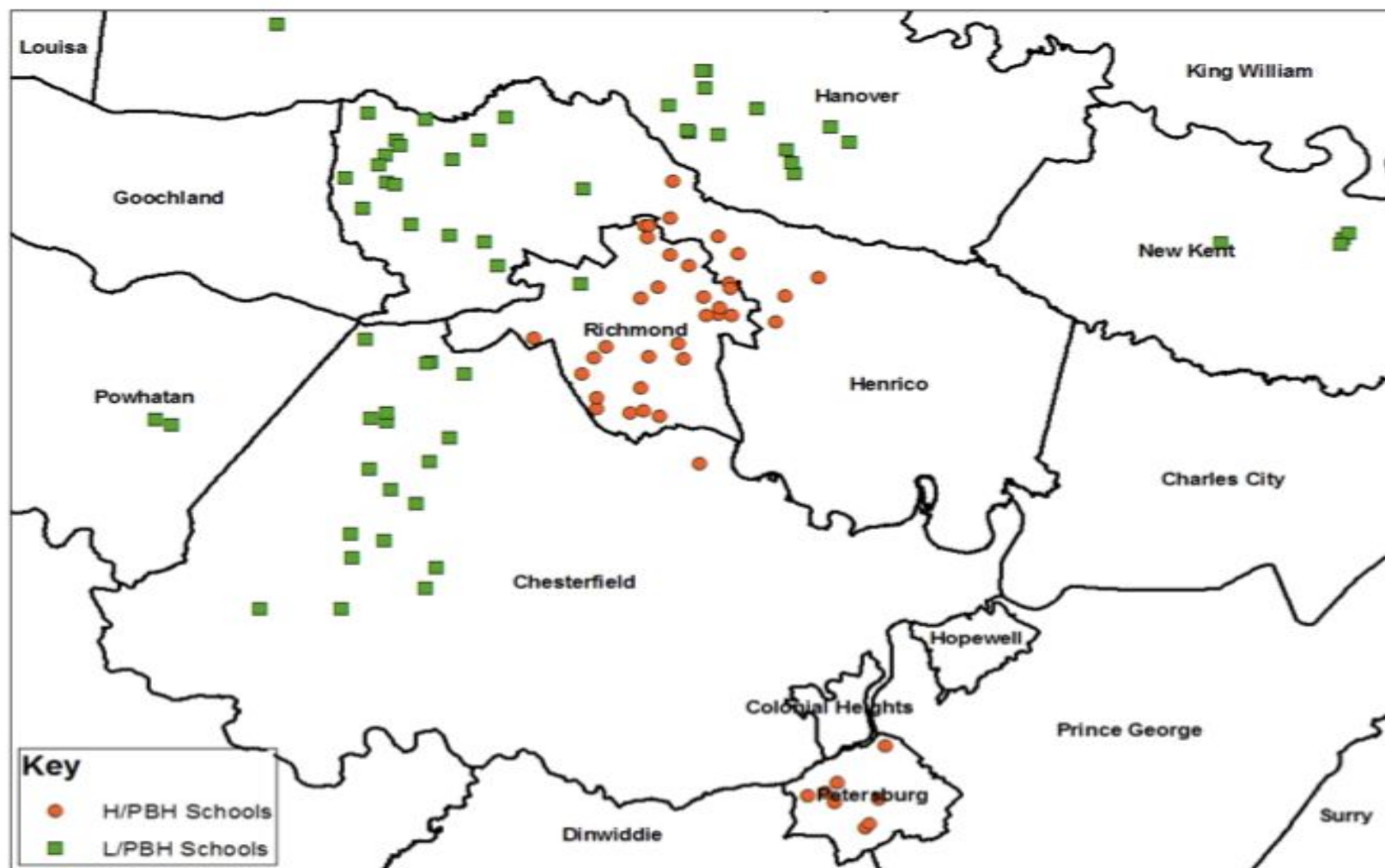




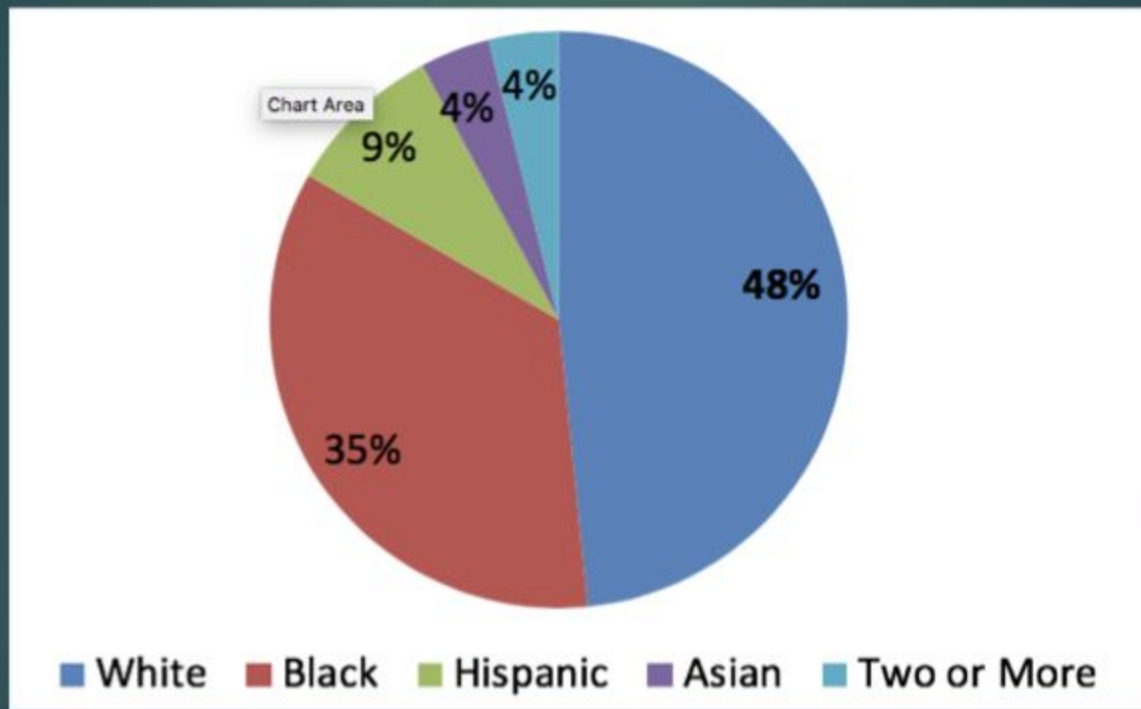






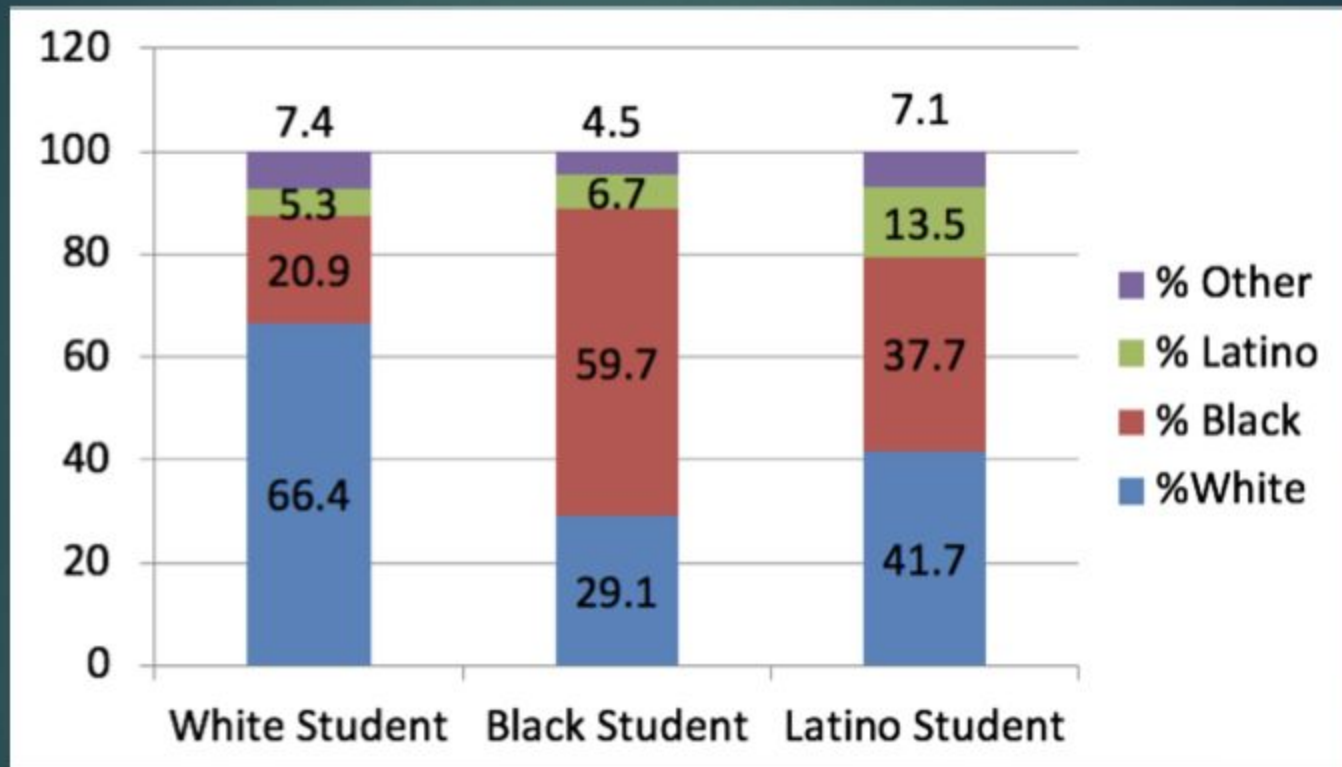


White students now constitute a minority in Richmond CBSA schools



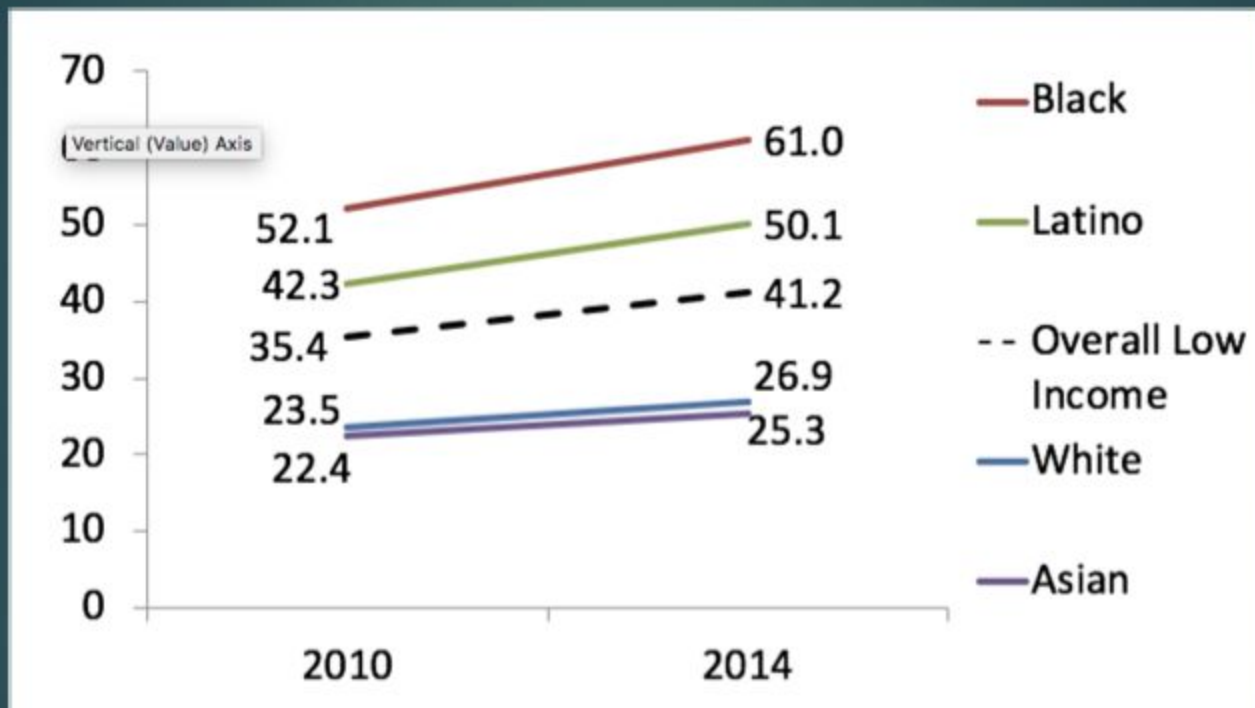
Source: NCES Common Core of Data, 2014

Sharp racial variation in school settings across Richmond CBSA



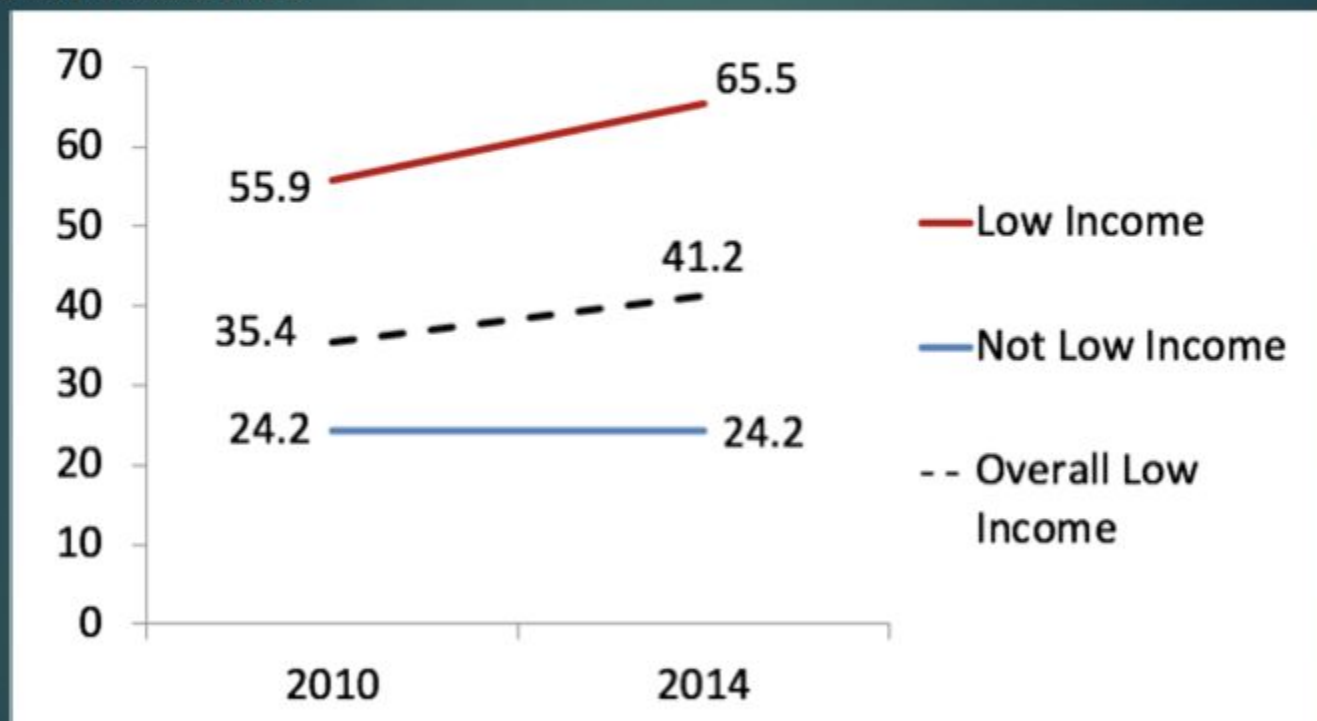
Source: NCES Common Core of Data, 2014

Sharp and rising variation in racial exposure to school poverty

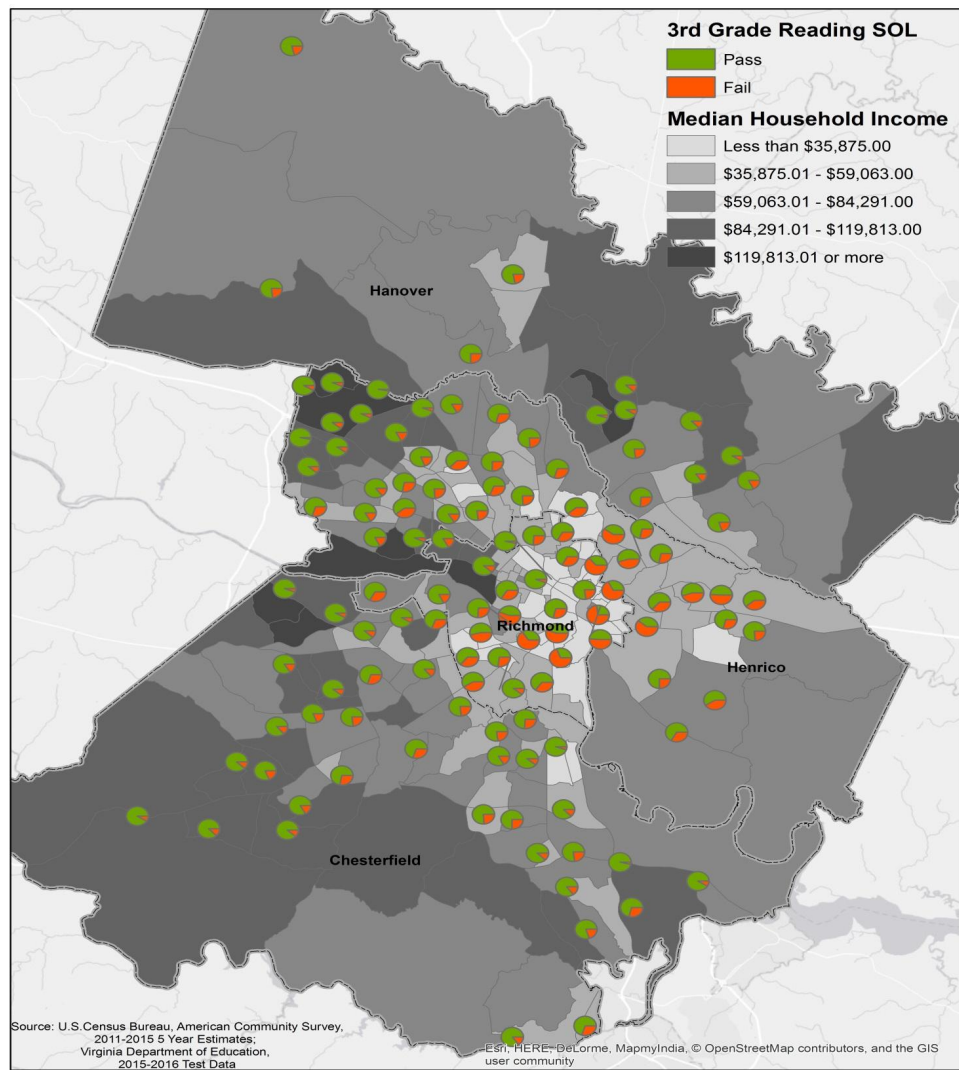


Source: NCES Common Core of Data, 2014

Stark variation in exposure to school poverty by student income



Source: NCES Common Core of Data, 2014



**Housing Choice Vouchers as a Percentage
of Renter Occupied Units**

0.6% - 3.6%

3.7% - 6.5%

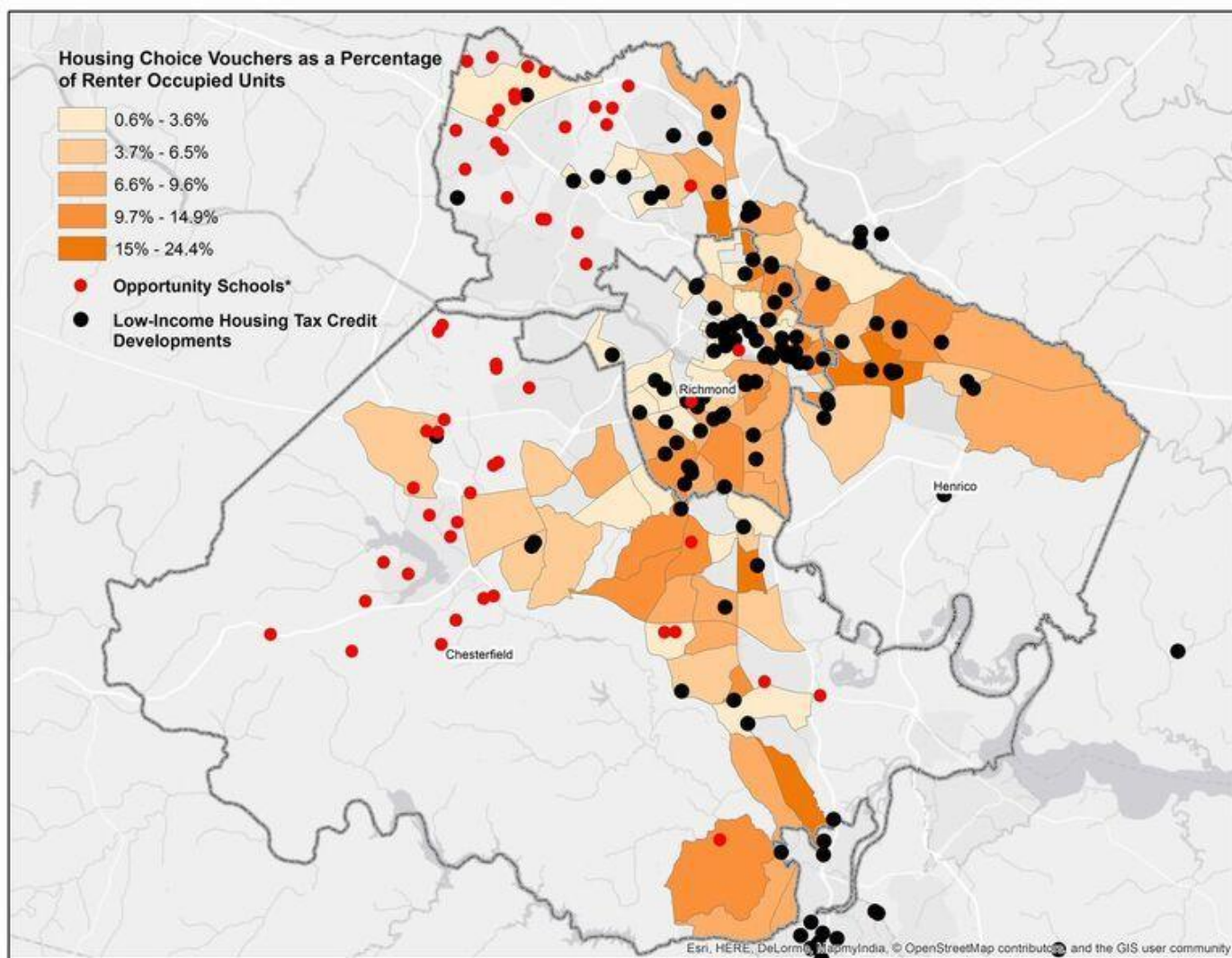
6.6% - 9.6%

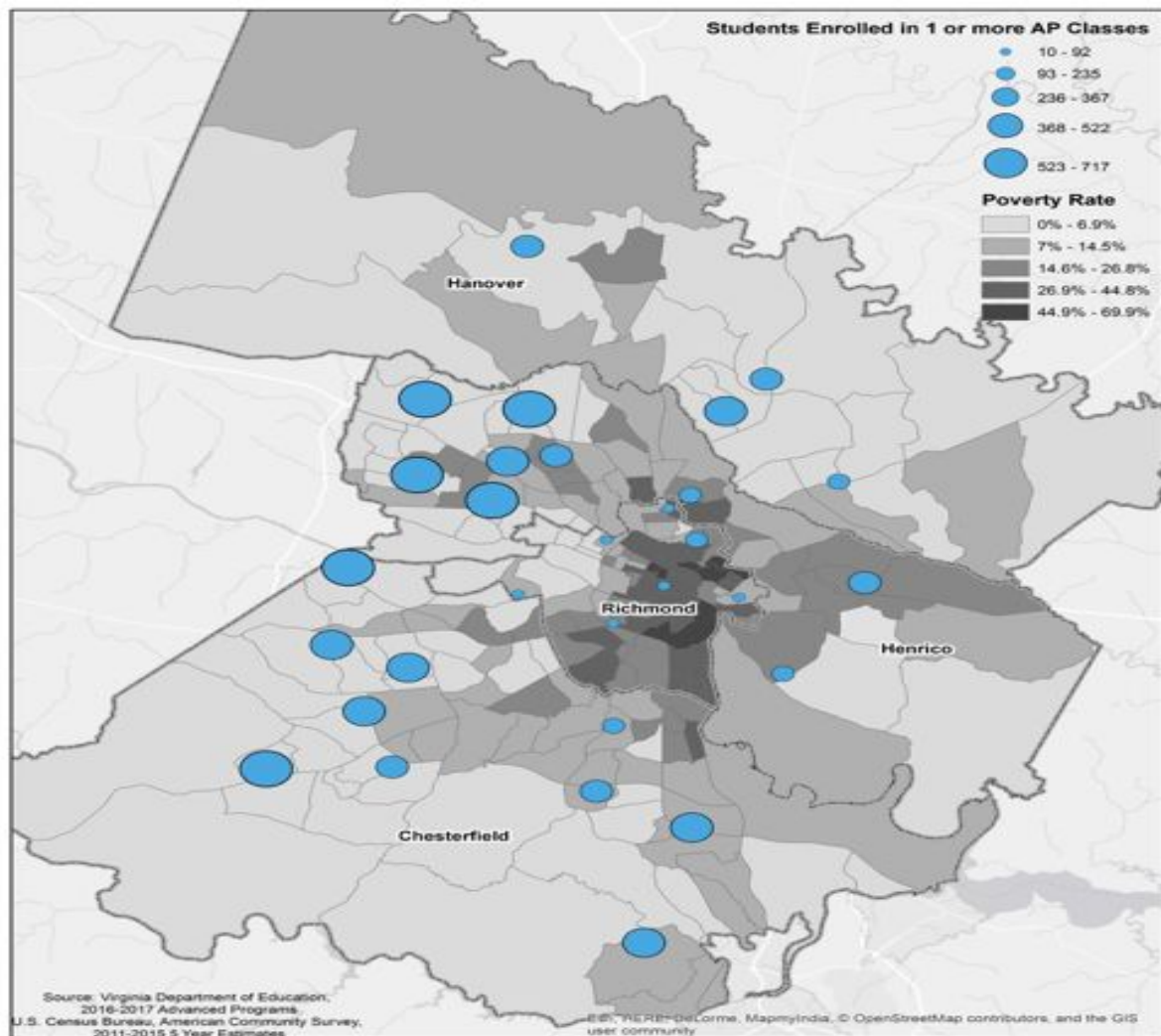
9.7% - 14.9%

15% - 24.4%

● Opportunity Schools*

● Low-Income Housing Tax Credit
Developments





Implications

- City-suburban consolidation and managed choice
- Regional collaboration agreements around schools (e.g., magnets, transfers)
- Nuanced school evaluation
- Advertise and celebrate neighborhood and school diversity
- Enforce fair housing laws and promote inclusionary zoning
- Encourage mixed-income and regional fair share affordable housing development
- Link federal housing subsidies to communities with high opportunity schools

Questions?

Thank you!