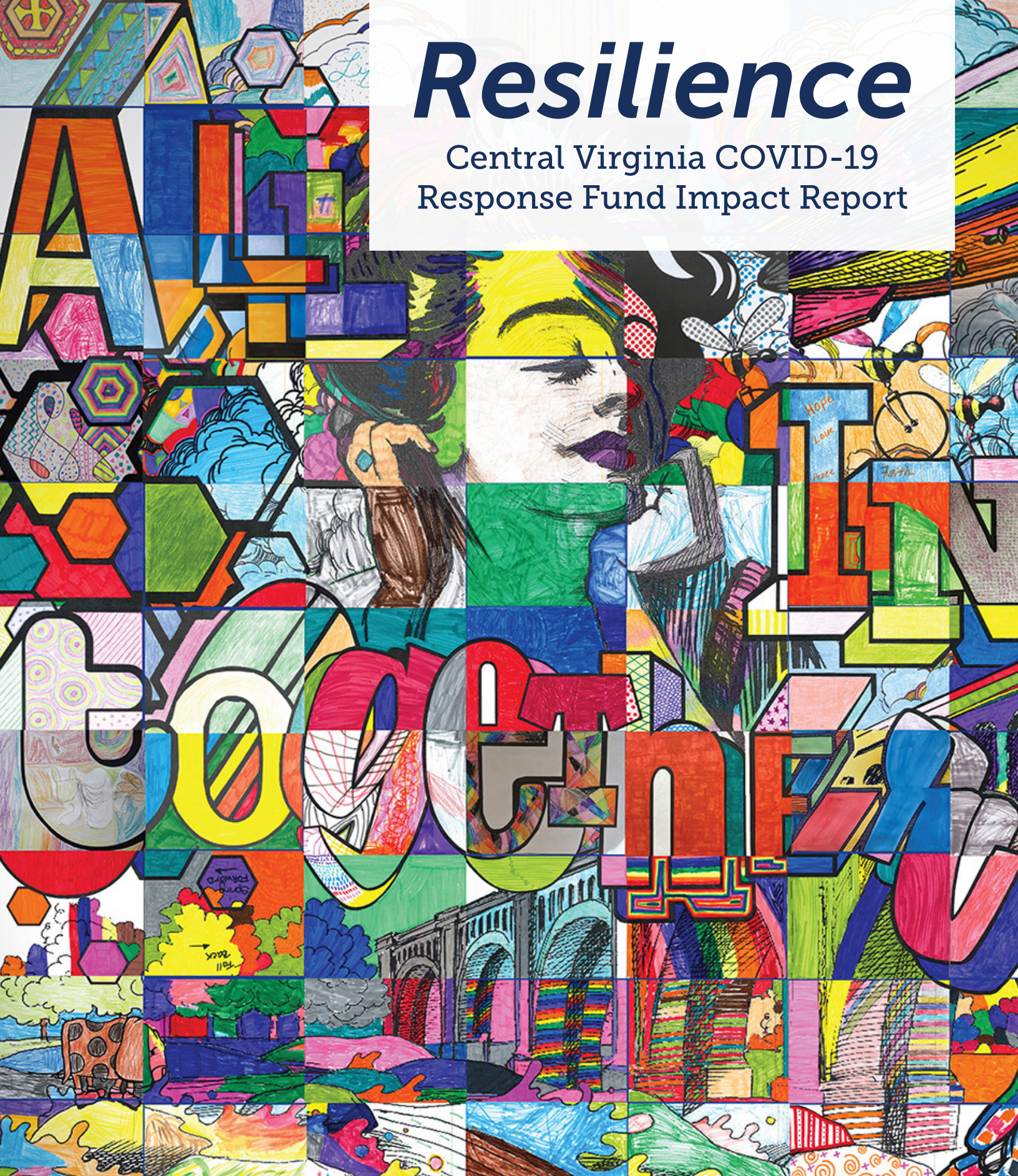


Resilience

Central Virginia COVID-19
Response Fund Impact Report



About the Cover

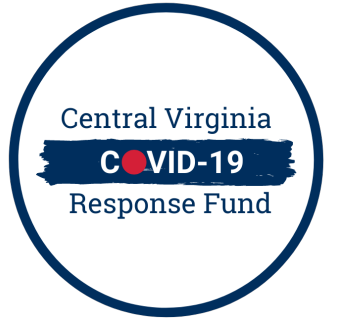
Local artists Hamilton Glass and Matt Lively created the **All In Together** project to highlight the beauty of a community coming together even while physically apart. For the project, individual coloring sheets completed by volunteers are united into large murals for public displays of togetherness during social isolation.



“ We aim to include people who may not otherwise be able to join in the creation of public art: those who are too young, too sick, or too old to otherwise participate in public community engagement events. The biggest thing we hoped to achieve was to provide people with a tool that could create space, calm, and connection because it was the exact opposite of what most people were experiencing, but what they wanted and needed.”

- Hamilton Glass, artist

Well ahead of the COVID-19 crisis, the Community Foundation, PlanRVA and the Emergency Management Alliance of Central Virginia came together to establish a fund that could be activated during a local disaster. Of the scenarios we considered, we never could have predicted the magnitude and duration the pandemic would have. While it quickly reached global scale, our focus for addressing emergent needs in Central Virginia never wavered.



As businesses, foundations and individuals joined the effort, we were reminded of what brings us together as a community – compassion, generosity, resolve. Time and time again, people rose to the occasion to help those most affected by the crisis. Nonprofits were nimble and creative in delivering much-needed services amid heightened safety concerns and virtual environments. Donors were eager to share their time and resources, often giving more than usual and in multiple ways. Local leaders developed new partnerships and approaches to move our region towards recovery and resilience.

The experience unveiled raw emotions and greater awareness of disparity in our region, but it also built our muscle to do hard things together. Here are some of the lessons we have learned that will carry us forward:

- **Do not underestimate the spirit of generosity in Central Virginia.**
The Central Virginia COVID-19 Response Fund raised \$7M from hundreds of donors, large and small, far surpassing any previous disaster response campaign.
- **People want to be part of something good.**
The pandemic impacted all of us in some way, connecting us to each other and compelling us to act. Recognizing we can do more good together, we sought to lift people up and make room for their involvement.
- **Leadership requires strong partnerships.**
With a strong base of cross-sector collaboration, philanthropy stepped forward to provide support to organizations addressing urgent needs and to bridge the gap until public dollars came through.

Thank you for your support of the Central Virginia COVID-19 Response Fund. As you read stories of impact on the pages that follow, we hope you will be inspired by what we have been able to accomplish together. Let's continue to rebuild and reimagine our region as a place of opportunity for all who live, work and play here.

Sherrie Armstrong,
President & CEO, Community
Foundation for a greater Richmond

Martha Heeter
Executive Director,
PlanRVA

Together, One Region

In times of crisis, philanthropy can lean into its leadership role and unite our community for the greater good. With strong relationships cultivated over many years, we were able to respond to the uncertainty of COVID-19 with proactive action and collaboration.

Preparing for Rapid Response

In 2018, the Community Foundation partnered with PlanRVA and the Emergency Management Alliance of Central Virginia to establish a regional disaster preparedness and response fund, which would be used to provide much-needed resources in the event of a local disaster. While we could not predict what would come, we were confident in our combined expertise to meet the critical needs of our most vulnerable residents and neighbors. The Central Virginia COVID-19 Response Fund was the first activation of this fund, providing a quick response when our region needed it most.

“Our shared commitment to planning and coordination paid off as we came together to tackle a crisis at a scale few could have predicted.”

– Ben Ruppert, Finance Officer, Emergency Management Alliance

A Collective Force for Good

When the pandemic began to affect life in Richmond and Central Virginia, the response was quick and decisive. The fund was launched with an initial gift from the Community Foundation in March 2020 and steadily grew to \$7 million with gifts from a cross-section of individuals, private foundations, corporations, and other generous donors of the region.

Special thanks to the United Way of Greater Richmond & Petersburg for offering a matching grant to encourage additional online gifts and to our media partner, NBC12, for regularly promoting the fund as a fast and easy way to support a wide range of organizations with a single gift.

Thanks to the generosity of our donors, the COVID-19 Response Fund raised

\$7 million

and awarded

220 grants

that reached

761,282

individuals across the region

Response to Recovery

The Fund was designed to be flexible in focus as needs changed over time and to complement other resources and responses at the national, state and local levels. Early phase funding focused on response strategies to ensure the health and safety of our community. As the region began to reopen, the fund expanded its scope to include strategies that support longer term recovery in areas such as child care, rental assistance and supporting residents as they attempted to return to work.

Special thanks to our tremendous staff team who worked diligently to monitor needs, changes and developments daily and to our stellar Fund Advisory Committee who met weekly for over a year to ensure the combination of grants would offer the most good for the most people.

COVID-19 Response Fund Advisory Committee

Scott Blackwell,
Community Foundation

Annette Cousins,
Community Foundation

Paul Hundley,
Richmond Office of Emergency
Management, EMACV

Katie Moody,
PlanRVA

Courtney Rice,
Robins Foundation

Ben Ruppert,
Hopewell Office of Emergency
Management, EMACV

Immanuel Sutherland,
Altria

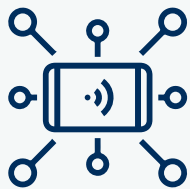
Audrey Trussell,
United Way of Greater
Richmond & Petersburg

Regional Impact



5.2M
Meals

\$386K
in Rent
Support



8K
Mobile
Hotspots

19K
Hotel &
Shelter Stays



Grant Priorities

The Central Virginia COVID-19 Response Fund awarded grants to local organizations serving those most affected by the pandemic. An advisory committee regularly reviewed requests for fund support, with initial consideration going to organizations addressing emergent needs and later supporting longer-term community recovery.

Health Services

To promote the health and safety of our neighbors and the health clinic staff who serve them, the COVID-19 Response Fund supported the launch and maintenance of telehealth platforms for nonprofit clinics across Central Virginia, as well as WiFi hotspots to ensure patients and staff could access these services.

Housing Assistance

The number of residents in our region experiencing homelessness or housing insecurity increased as more people faced job loss or reduced work hours. In addition to supporting safe shelter spaces and rental assistance for those at risk of eviction, the COVID-19 Response Fund also provided critical support for the Housing Resource Line, which launched in September 2020 as a one-stop-shop for area residents seeking assistance with housing or critical repairs.

Food Distribution

Nonprofit organizations, schools and localities worked side by side to help individuals and families combat hunger during this difficult time. Grants were used to provide new equipment to food banks, support delivery vans and transportation costs, provide translation services and supply groceries or meals to residents in need.

School Technology

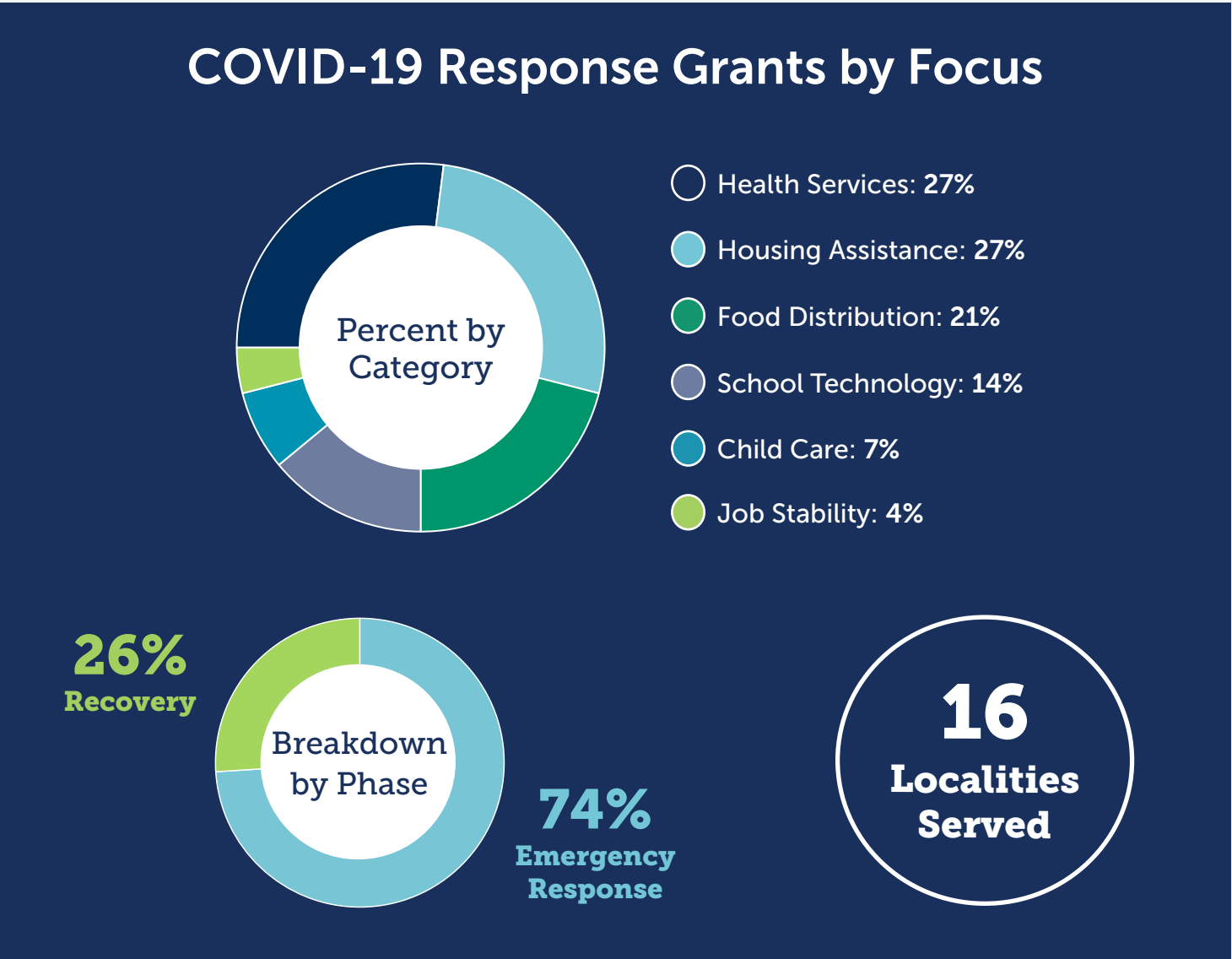
New virtual learning environments have required new technology for students and teachers alike. Twelve school districts in urban, suburban and rural parts of Central Virginia received grants to support the purchase and distribution of Chromebooks, mobile WiFi hot spots and video equipment so that learning could continue from home.

Child care

Many nonprofit child care centers needed to stay open and continue early childhood programs, virtual learning support and after-school care for children of essential workers and first responders, as well as families for whom remote work is not an option. Grants have helped centers adhere to required safety protocols by providing for additional staffing, cleaning supplies, thermometers and pre-packaged meals.

Job Stability

At the start of the pandemic, Greater Richmond’s unemployment rate jumped from a healthy 2.9% to a staggering 11.4% in one month. To help mitigate the economic effects that challenged our region’s families and businesses, grants supported training and employment counseling for individuals who lost their jobs or had reduced work hours due to COVID-19, as well as offsetting reopening costs for small businesses.



Volunteer Efforts

Masks and Hand Sanitizer

When health officials began advising the use of masks and hand sanitizer to slow the spread of COVID-19, many individuals and agencies had difficulty finding or affording the masks they needed. In response, a large network of local businesses, government agencies, creative nonprofits, universities, and countless volunteers across the region stepped up to create, source, and distribute these supplies in our community.



Meal Distribution

With school buildings closed as a health precaution, Richmond Public Schools needed to ensure that their students would receive the meals they ordinarily got at school. The sustained efforts of volunteers across the city enabled the school district to distribute over 1.5 million meals to students and their families in 2020.



Volunteering from Home

Volunteers also found creative ways to connect with their neighbors from afar. Through curated DIY projects posted to the HandsOn website, volunteers signed notes of encouragement. These efforts helped lift the spirits of students, seniors, individuals experiencing homelessness, child care providers and veterans in Central Virginia.



Public Art

When we feel disconnected or divided, art can bring us together. Local artists Hamilton Glass and Matt Lively orchestrated the collaborative art project All In Together, where individual coloring sheets completed by volunteers were joined together for public displays of togetherness during social isolation. Glass also organized Mending Walls RVA, where local artists collaborated with volunteers to create murals across the city, sparking conversation about the role race plays in society today and how we can move forward with greater empathy and understanding.



The Community Foundation serves as a resource for connecting volunteers with organizations doing important work in the region. It is a complement to the many other efforts underway in neighborhoods and individual organizations. Throughout the pandemic, thousands of volunteers generously gave the gift of time to help distribute meals and essential supplies.

Volunteers
Engaged

6K
Volunteer
Connections

7K
Hours
Served

Supplies
Distributed

1.5M
Meals

57K
Bottles of
Hand Sanitizer

1M
Diapers

600K
Reusable
Masks

Rising to the Challenge

Connecting teachers to their virtual classrooms

In-home internet access is vital for virtual learning, and about one in four teachers for Hanover County Public Schools have limited or no internet access at home. The **Hanover Education Foundation** connected 150 teachers with mobile WiFi hotspots, ensuring that instructors could continue delivering lessons and hold video conferences with students while school was being held virtually.



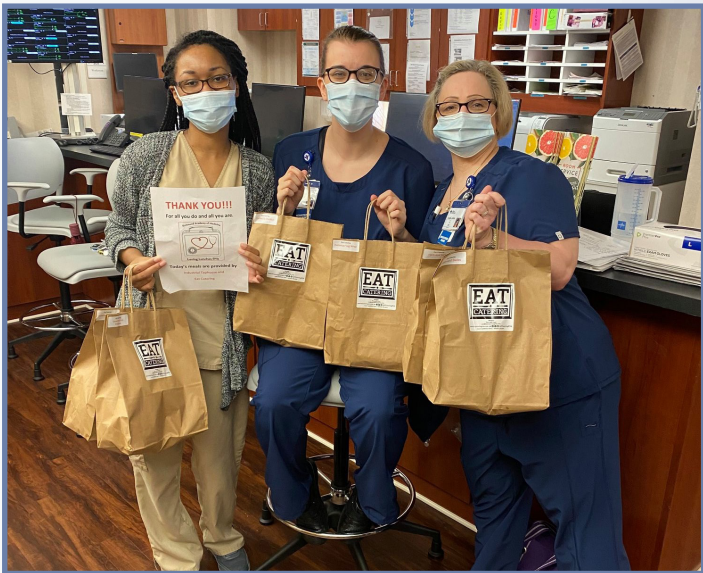
FRIENDS Association for Children

Equipping child care providers with critical supplies

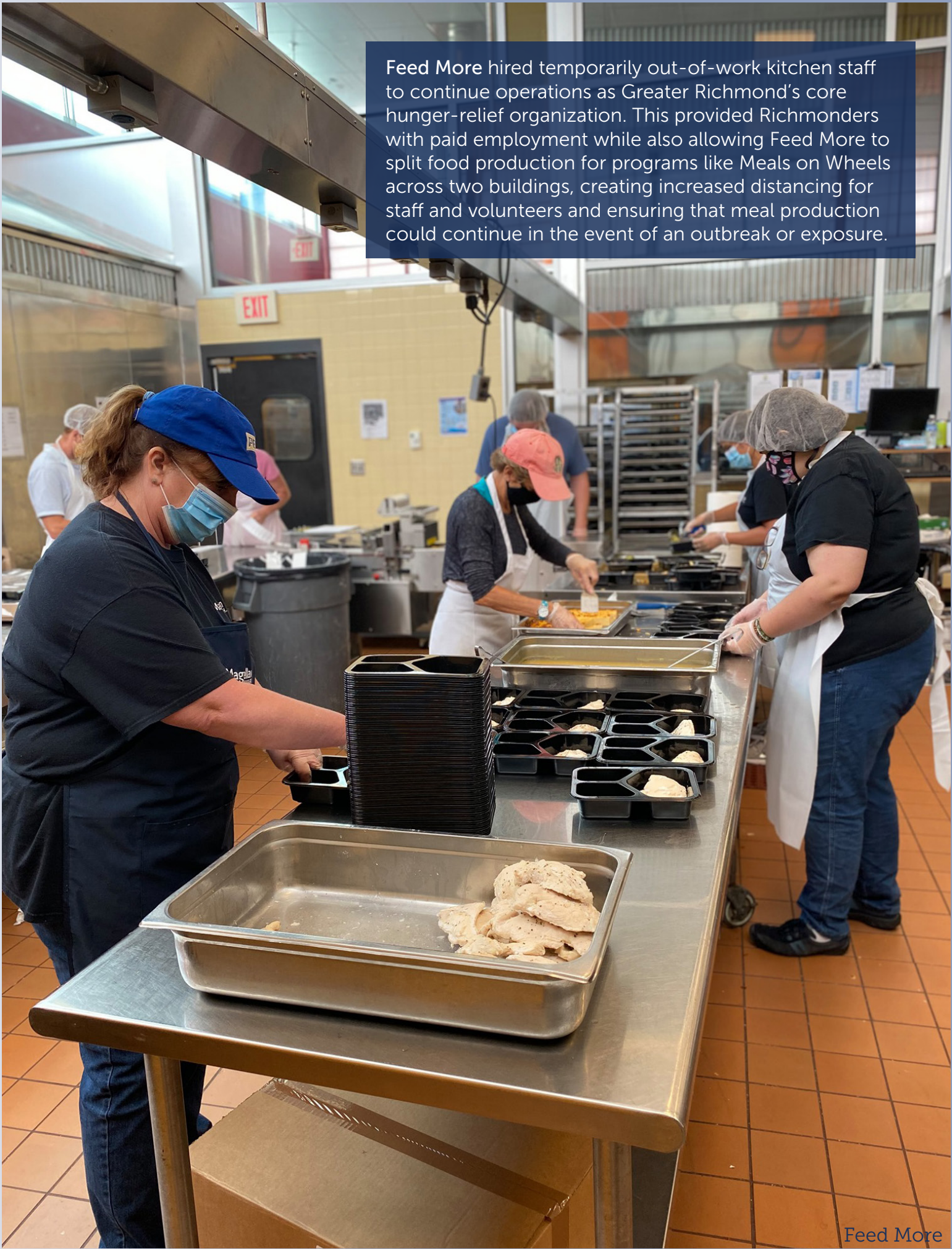
Child care providers were deemed essential workers, but many did not have the necessary resources to support their centers during the pandemic. In response, **Smart Beginnings Greater Richmond** led an effort to acquire and distribute cleaning supplies and personal protective equipment to child care programs across the region. By partnering with the Community Foundation, ChildSavers, Virginia Department of Social Services and VPM, this coalition equipped 306 child care providers with PPE and cleaning supplies so they could continue to collectively care for over 15,600 children.

Showing love to medical staff and local restaurants

The **Richmond Academy of Medicine** designed the Loving Lunches RVA program to support essential frontline medical staff with delivered meals while also boosting the local food services economy. Restaurants were contracted to create boxed meals, which were then delivered to health care workers at area hospitals, community clinics, nursing homes and COVID-19 testing sites. In all, over 75 restaurants, caterers and food trucks created more than 16,000 meals for frontline workers across 27 health care locations.



Richmond Academy of Medicine



Feed More hired temporarily out-of-work kitchen staff to continue operations as Greater Richmond's core hunger-relief organization. This provided Richmonders with paid employment while also allowing Feed More to split food production for programs like Meals on Wheels across two buildings, creating increased distancing for staff and volunteers and ensuring that meal production could continue in the event of an outbreak or exposure.

Supporting Neighbors

For HumanKind clients who faced reduced work hours or layoffs, the organization was able to provide employment coaching, bill pay and food assistance, toiletry care packages, and vehicle fuel assistance to help with errands and transportation to and from work. "Being able to get back and forth to work is just as essential as your presence at your job," one client said. "I was so grateful."



Neighborhood Resource Center

Making a difference with meal delivery

To ensure residents had ongoing access to healthy foods, the **Neighborhood Resource Center of Greater Fulton** launched a no-contact hot food delivery system and created accessible home-based gardens. One recipient of the hot meals program was an 80-year-old woman who has lived in Greater Fulton her entire life. She expressed how excited she was to receive these hot meals every day, and she especially loved receiving fresh vegetables with her food pantry bag. She said she wasn't sure how she would have made it through the early months of the pandemic without this program.

Providing financial assistance and mental health services

“ When I called **Latinos in Virginia Empowerment Center (LIVE)** and learned about all the services they provide, I was really surprised, in a good way. I never knew about an agency working with the community, serving in such a big way, in our own language! The financial assistance I received gave me a chance to catch my breath. Not only that, they provided me with services to overcome a trauma.”

– LIVE client

Supporting students facing housing instability

One Petersburg student and his family were residing in a hotel due to being homeless — the student's mom had lost her job and they were struggling to pay the hotel rental fee. After being asked to leave the hotel due to non-payment, the student called his **Communities in Schools of Petersburg** Site Coordinator, who connected with the principal of his school. Within an hour, CIS-P arranged payment for the family for two weeks.



Forging New Partnerships



Supporting the Latino community

Despite making up a small percentage of the total population, Richmond’s Latino population experienced the highest rates of positive COVID cases early in the pandemic. To help mitigate the risk, an innovative cross-sector partnership formed between the Richmond and Chesterfield Health Districts, the CDC Foundation, Richmond Memorial Health Foundation and local funders, and several organizations with established trust in the Latino community. By coordinating efforts, the partnership garnered \$3.1 million to help families with rent and utility support, access to food, and connections with bilingual navigators and community health workers. Several organizations have scaled programs to meet increased demand, while partners have shared best practices with other communities across the country.

gators and community health workers. Several organizations have scaled programs to meet increased demand, while partners have shared best practices with other communities across the country.

Assisting businesses and budding entrepreneurs

As many small, women- and minority-owned businesses risked closing their doors, the COVID-19 Response Fund joined other local funders in supporting **Metropolitan Business League’s (MBL) We Care Recovery Grant Program**. By serving on the grant committee, Community Foundation staff helped identify small businesses to receive emergency funding, technical assistance and digital support, while also learning more about MBL programming. In 2021, MBL received one of the first grants from the Fund for Entrepreneurial Growth for its Youth Entrepreneurship Program, which raises student awareness and aspirations for self-employment as a potential lifetime career path.

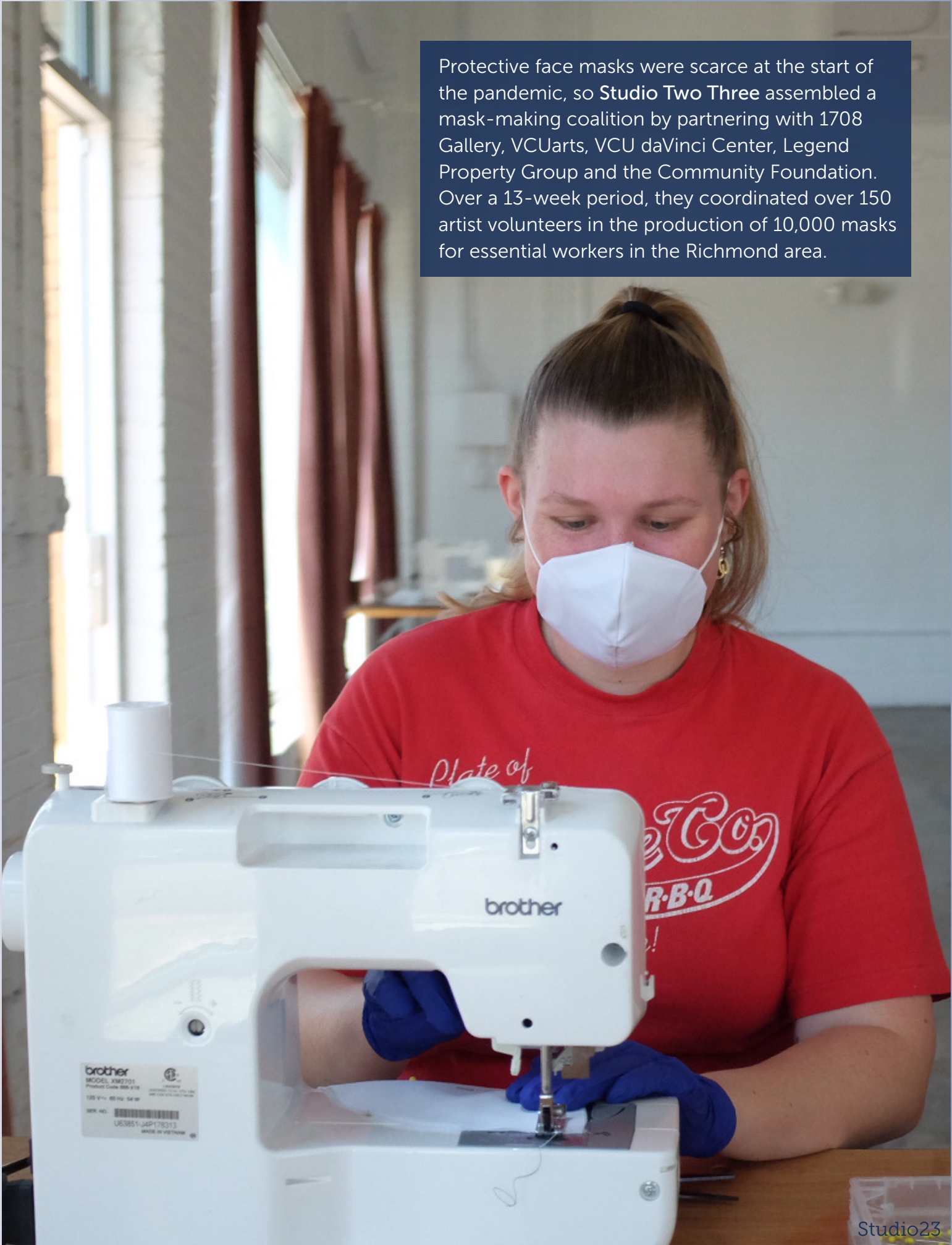
Collaborating for schools

In the earliest days of the COVID crisis, the region’s Incident Management Team joined forces with several of the region’s public education foundations to identify an efficient way to feed students when schools shut down. With grant support, they joined forces to procure larger quantities of food at lower prices and distribute more quickly to families. With help from Plan RVA and later the Community Foundation, the group has continued to convene weekly to collaborate on solutions to shared challenges such as learning loss, broadband access and staffing shortages.



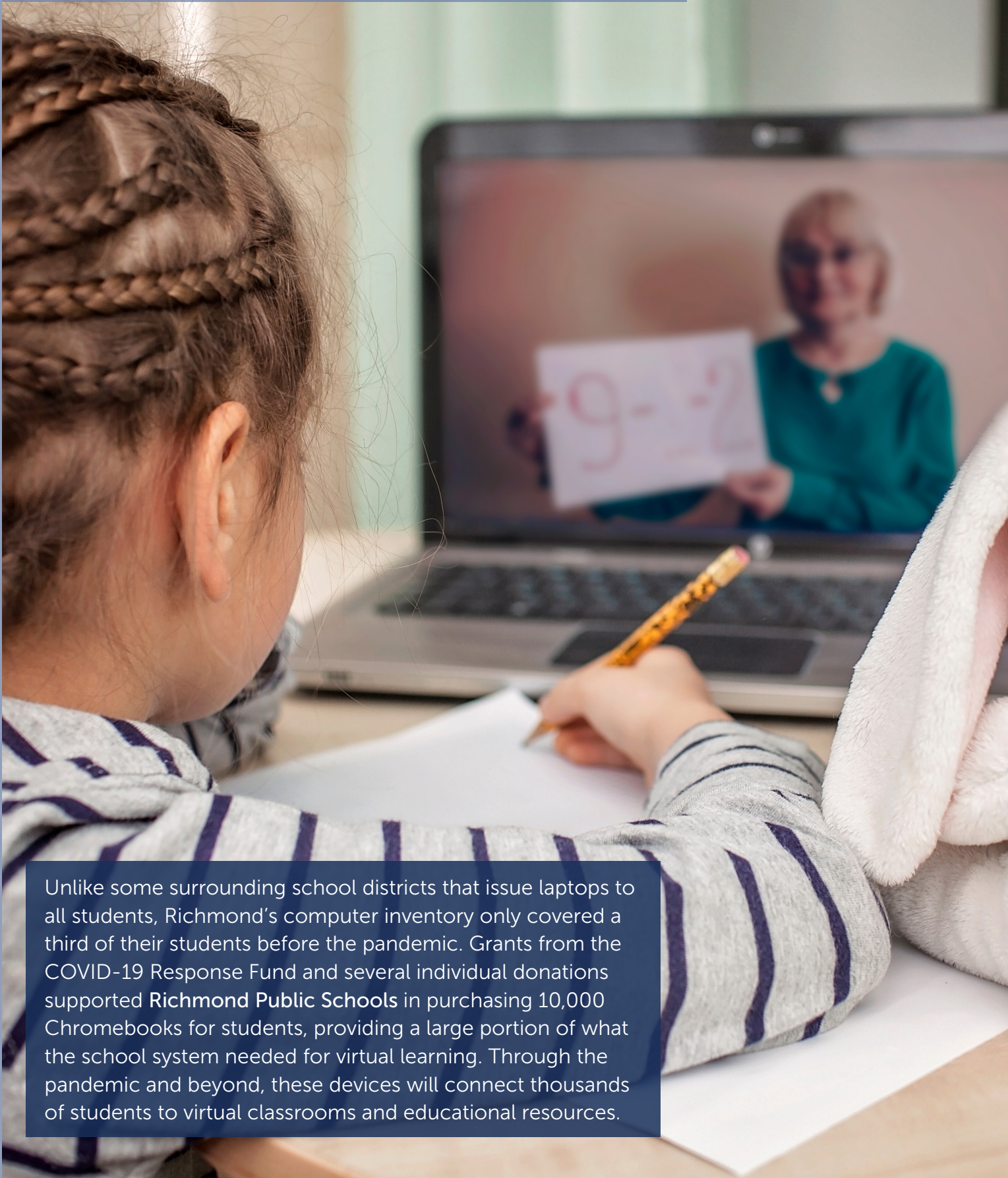
Richmond Public Schools

Protective face masks were scarce at the start of the pandemic, so **Studio Two Three** assembled a mask-making coalition by partnering with 1708 Gallery, VCUarts, VCU daVinci Center, Legend Property Group and the Community Foundation. Over a 13-week period, they coordinated over 150 artist volunteers in the production of 10,000 masks for essential workers in the Richmond area.



Studio23

Investing in the Future



Unlike some surrounding school districts that issue laptops to all students, Richmond's computer inventory only covered a third of their students before the pandemic. Grants from the COVID-19 Response Fund and several individual donations supported **Richmond Public Schools** in purchasing 10,000 Chromebooks for students, providing a large portion of what the school system needed for virtual learning. Through the pandemic and beyond, these devices will connect thousands of students to virtual classrooms and educational resources.



Expanding access to medical care through telehealth

Sixteen community health agencies received funding to implement telehealth and equip their clients and staff with the technology to conduct appointments from home. These advances ensured residents would continue to receive quality health care while minimizing exposure risk. The new equipment also makes health care more accessible to many residents going forward.

Navigating the region's housing needs

The cascading effects of the pandemic brought an urgent need for eviction diversion and rental assistance and, with fund support, the **Partnership for Housing Affordability** launched the Housing Resource Line (HRL) in September 2020. This hotline initially focused on directing callers to resources addressing evictions and rent costs, but the HRL has since expanded to provide information for a wide range of housing needs, including locating affordable rental options and home repairs.



Even though the HRL doesn't provide direct services, being able to point people in the right direction has been critical to helping them overcome difficult situations. COVID-19 really accelerated the need for a centralized access point, as we saw many of our neighbors struggling to have their basic housing needs met"

-Jovan Burton, of the Partnership for Housing Affordability

Increasing food pantry storage and distribution

Belmont Community Resource Services converted their food pantry into an outdoor drive-thru operation so they could continue serving the community while protecting the health and safety of residents and volunteers. With fund support, the organization was able to purchase a new walk-in freezer, a storage shed and an extended carport, and they also hired a part-time staff person to assist with daily food donation pickups. These additions helped expand their capacity to store and distribute fresh foods for their neighbors.



Belmont Community Resource Services

Grants

The following nonprofits received grants from the Central Virginia COVID-19 Response Fund:

Child Care

First Baptist Ashland Christian Child Development Center
FRIENDS Association for Children
Fulton Montessori School
Greater Richmond SCAN
HomeAgain Richmond
Huguenot UMC Preschool
Kiddie Kingdom
Peter Paul
St. James’s Children’s Center
YMCA of Greater Richmond
YWCA Richmond

Cornerstone Revitalization Center
Downtown Churches United
Family Lifeline
Feed More
FeedTheStreetsRVA
Frontline Foods Richmond
Goochland Education Foundation
HandUP Community Resource Center
Hanover Education Foundation
Henrico Christmas Mother
Henrico Education Foundation
H.O.P.E
Hopewell Food Pantry
HumanKind
Latinos in Virginia Empowerment Center
Louisa County Resource Council
Mercy Mall of Virginia
Neighborhood Resource Center
New Hope Food Pantry
New Song Church
Partnership for Families
Peter Paul
Powhatan County Social Services
Promise Land Storehouse
Richmond Academy of Medicine
Richmond Education Foundation
Richmond Friends of the Homeless
Richmond Hill - Armstrong Leadership Program
Richmond Public Schools Education Foundation
RVA Community Development Corporation
Sacred Heart Center
Saint Francis Home
Senior Connections
Shalom Farms
The Shepherd’s Center of Chesterfield
The Society of St. Andrew
UGK Community First
Virginia Community Voice
Waymakers Foundation

Health Care & PPE

Bon Secours Richmond Health Care Foundation
Capital Area Health Network
Central Virginia Health Services
ChildSavers
Circle Center Adult Day Services

Communities In Schools of Chesterfield
Conexus
Cristo Rey Richmond
CrossOver Healthcare Ministry
Daily Planet Health Services
Elk Hill
The Faces of HOPE of Virginia
Family Lifeline
Free Clinic of Powhatan
FRIENDS Association for Children
Full Circle Grief Center
Gateway Homes
GoochlandCares
Greater Richmond Chamber Foundation
Hanover Safe Place
Health Brigade
Heart Havens
Henrico Too Smart 2 Start Coalition
Honoring Choices Virginia
ICNA Council for Social Justice
Jewish Family Services
La Casa de la Salud
Latinos in Virginia Empowerment Center
Little Hands Virginia
Lucy Corr Foundation
Mask Production and Distribution
Matthew’s Haven
Mental Health America of Virginia
NAMI Central Virginia
Nurture
Powhatan County
Powhatan County Social Services
Real Chances
Richmond Academy of Medicine
Richmond Behavioral Health Foundation
Richmond City Health District
Rx Partnership
Sacred Heart Center
Safe Harbor
SOAR365
South Richmond Adult Day Care Center
St. Joseph’s Villa
Studio Two Three
University of Richmond
Urban Baby Beginnings
Virginia League for Planned Parenthood
YMCA of Greater Richmond
YWCA of Richmond

Education

Amelia County Public Schools
Appomattox Regional Governor’s School for the Arts & Technology
Cameron K. Gallagher Foundation
Charles City County Public Schools
Chesterfield Education Foundation
Colonial Heights Public Schools
Dinwiddie County Public Schools
Goochland Education Foundation
Hanover Education Foundation
Henrico Education Foundation
Hopewell Public Schools
Petersburg City Public Schools
Petersburg Library Foundation
Prince George County Public Schools
Richmond Community ToolBank
Richmond Public Schools

Food Access

Amelia County Food Pantry
Atlantic Outreach Group
Baptist General Association of Virginia
Belmont Community Resource Services
Charles City County
Chesterfield Education Foundation
Circles Ashland
Circles RVA
Colonial Heights Food Pantry
Communities in Schools of Chesterfield
Communitieis in Schools of Petersburg
Communities in Schools of Richmond



To get fresh, affordable veggies out into the community safely, **Shalom Farms** modified their Grown to Go Mobile Market to accommodate social distancing, and they have collaborated with several new feeding programs that have emerged in response to COVID-19.

Housing

ACTS
Better Housing Coalition
Boaz & Ruth
Boys & Girls Clubs of Metro Richmond
CARITAS
Carol Adams Foundation
Central Virginia Legal Aid Society
Commonwealth Catholic Charities
GoochlandCares
Help Me Help You Foundation
HomeAgain Richmond
Homeward
Housing Families First
Housing Opportunities Made Equal of Virginia
International Rescue Committee
The James House
Kingdom Life Ministry
Latinos in Virginia Empowerment Center
Louisa Community Emergency Fund
Maggie Walker Community Land Trust
The McShin Foundation

Moments of Hope Outreach
OAR of Richmond
Operation First Response
Partnership for Housing Affordability
project:Homes
Rappahannock United Way
REAL LIFE
Re-Establish Richmond
Richmond Behavioral Health Foundation
Richmond Metropolitan Habitat for Humanity
Sacred Heart Center
The Salvation Army
St. Joseph’s Villa
STEPS, Inc.
Sussex County Department of Social Services
Urban Hope
Virginia Community Voice
Virginia Home for Boys and Girls
Virginia Poverty Law Center

Workforce Development

Greater Richmond Chamber Foundation
Greater Richmond SCAN
HumanKind
JobsRVA
Metropolitan Business League
Pathways VA
Reynolds Community College Educational Foundation
Riff Arts Institute
United Way of Greater Richmond & Petersburg
Virginia Hispanic Chamber of Commerce Foundation
Virginia Interfaith Center for Public Policy

Donors

The following donors contributed to the Central Virginia COVID-19 Response Fund:

Founding Contributors

Altria
Atlantic Union Bank
Bank of America
The Cabell Foundation
Capital One
CarMax Foundation
Community Foundation for a greater Richmond
Dominion Energy
Facebook
Genworth
Humana Foundation
Jenkins Foundation
Markel
NBC12
Mary Morton Parsons Foundation
Richmond Memorial Health Foundation
Robins Foundation
Rotary Club of Richmond¹
Bob and Anna Lou Schaberg Foundation
United Way of Greater Richmond & Petersburg
VCU Health System
Wells Fargo
West Cary Group

David Baughan
Ann & Mike Beall¹
Elizabeth T. Beckmann
The Benevity Community Impact Fund
Mr. & Mrs. Robert W. Bingham Jr.
Molly & Steve Bittner
Scott Blackwell
Mr. & Mrs. Martin Blough
Laura Boland
Ellen Borges
Deborah & John Ros Bowers¹
Jennifer Boyer
Monika Boyle
Michael Bozzo
Connie & Bill Bradshaw
Ross Bragg
Jody & Read Branch¹
Bremo Pharmacy
Mary Ann Brenner
Larin Brink
Katherine Broschart
Jeremiah Brown
Jill Brown
Rhonda Brown
Tamara Brown
Rozine Bruce
Burns & McDonnell Engineering
Chris Burnside
Jessica & Brandon Butterworth
Aimee Callahan
Katherine Calos
Cynthia Cargas & Phillip Heesen
Jori Carter
Centenary United Methodist Church
CFA Society Virginia
Marshall O. Chambers
Amy Chapman
Nancy & Wayne Chasen¹
Tiffany Christopher
William Clarke
Dolores & Samuel Clement¹
Patrick Coleburn
Helen & Rob Comet
Community Foundation for Northern Virginia
Yvette & Anthony Conte
Kevin Cooper
Christy & David Cottrell¹
Ruth & Bob Courain
Lauren Crall
David H. Crighton Jr.
Mr. & Mrs. William P. Cushing
Paula Dameron

Julie Daniel-Fox
Francee Darlington
Emidio Dascanio
Susan & John Davenport¹
Kelly Davis
Monica Deaver
Josh Deblieux
Deloitte
Mr. & Mrs. Overton Dennis
Benjamin DeWitt
Alicia E. Dickinson
Chris Dimotsis
Mizel Djukic
Jennifer & Matt Domer¹
Donus Ponus Fund¹
James Dougan
DuPont Specialty Products USA
John Easter
Nancy K. Eberhardt
Lisa & William Eby¹
Maryellen Edmiston
Dorothy & Lucious Edwards
Carrie Emery
Marian E. English
Nita & Jack Enoch¹
Iris Eppes
Estate Planning Council of Richmond Virginia
The Estes Family
Estes Foundation
Jean & Robey Estes¹
Brandy Ewell
G. Don Faison
Farrell Family Trust
Mr. & Mrs. Thomas F. Farrell II
Fidelity Charitable Gift Fund
First Stop Donuts
Flying Squirrels Charities
Mr. & Mrs. Brian Ford
Amy Foreman
Scott Foreman
John Forrest
Frederick Foster
Robert Foster
William Franklin
Helena Franz
Harry Frazier IV¹
Christopher Freed
Cassandra Freeman
Leah Fremouw
Fulton Forward Foundation
Daniel Furman
Kimberly Gadette
Carrie Galeski¹

Dr. & Mrs. David Gardner
Mr. & Mrs. Christopher Garlock
Mr. & Mrs. Thomas Garner Jr.¹
Dr. & Mrs. William Garner¹
Gathright Family Fund¹
Patricia Giles¹
Timothy Gilligan
Anthony Goldenbusky
Michael Goldman
Good Shepherd Fund
Paige & Philip Goodpasture¹
Ashish Govil
John Grace
Freddie & Lawrence Gray¹
Great Workplaces
Mr. & Mrs. George Greene
Virginia Greene
The Greenway Pendleton Fund¹
Michael Griffin¹
Michael Grizzard
Richard Grubaugh
Gulf Coast Community Foundation of Venice
Martha Guthrie
Mr. & Ms. Charles Hall
Karen Halvorsen
Hamilton Family Foundation Charitable Trust
Mr. & Mrs. G. Bernard Hamilton
David Hannay
Susan & Jason Haritos¹
Terrell & Elliott Harrigan¹
Margaret Harrison
Stephen Hassmer
Jennifer & Roman Haueis¹
Wilbur M. Havens Charitable Foundation
Thomas Haw
Stephanie Haysley
Courtney Hazen
Kimberly Hearn
Bob Helbing
Lillian Henderson
Heritage Wealth Advisors
Betsy Herrington
Patrick Hill
Christopher Holland
Jean Holman
Katherine Honaker
Tamera Hornsby-Fink
Mr. & Mrs. Frank Hsu
Catherine Howard & Jeffrey Gallagher
Dan & Amy Hudgens Fund
Ryan Hudgins
Virginia Hudson
Charles & Anne Huffstetler
Christina Hummel
Elizabeth & Jeffrey Hunt
William Hunt
Lori & Chad Hurley
IPECAC

Lynn Izod
Mr. & Mrs. Eugene Jackson
Mr. & Mrs. James Jacobs
Kelly Jacobs
Thomas Jefferson III
Subremia Lewis Johnson
Genne & Rick Johnston
Aimie Jones
Jane H. Jones
Mike Jones
Wayne A. Jones Ph.D
Mr. & Mrs. Yancey S. Jones Jr.
James Juritsch
Leslie Kadel
Kanawha Fund¹
Sanket Kandharkar
Cristin Kaspar
Scott Kasson
Phyllis Katz¹
Mary Jo & Joseph Kearfott¹
Holly & Dan Kearns
Stacey & Mike Keeley
Amy Kerns
Patricia Kibler
Nick Kindig
Donald P. & Audrey C. King Fund¹
Elizabeth & Kenneth King
Emily Kiser
Pam Knapp & Ron Alpern
Michael Knopf
Patte Koval¹
Ryan Kowaltschuk
KPMG U.S. Foundation
Amy Kramer
Andrew Stanley Kratz Fund¹
KSA Interiors
Emily Kwong
Alice Land
Dana Lee
Daphne Lee
Jennifer & Jonathan Leon
Sarah Arenstein Levy & Bram Levy
Mr. & Mrs. John Levy
Mr. & Mrs. Matthew Lewis
Peggy Lewis
Hanyang Li
Mr. & Mrs. H. Michael Ligon
Lucille Lindamood
Linxox Equipment Corporation
Matthew Holbrook Lively
Elizabeth Long
Francis V. Lowden III
Whitney Lupton
Claudia Lushch
William Lyle
Alasdair MacKenzie
Saurabh Madaan
Stanley & Kim Markel Memorial Fund¹
Helen & Jon Markiewicz
Diana & John Markowitz¹
Kathleen Markowitz¹

Mr. & Mrs. Joseph Maroon
John Martin
Mr. & Mrs. Harry Marxen
The Massey Family
The Massey Foundation
Mr. & Mrs. Theodore Mastroianni
Perry Matthews
Laurel Bentley Maughan
Christy Mazza
Alan McCleaf
Kim & Rich McArdle
Christina & Aaron McClung
David McDaniel
Carter McDowell¹
McGuireWoods
John McKinzie
Mr. & Ms. Alan McLeod
Patricia McMahon
Robert McMahon
Jennifer & Scott McNamara
Bansari Mehta
Patty Merrill¹
Jeffrey Michel
Molly Mickens
Samantha Mier
Susan Miller & Kenneth Kendler
Paula Miner
Dinah Mitchell
Kenneth & Leslie Montero¹
The Monument Group
Mr. & Mrs. Andrew Moody
John Moody
Dorothy Moore¹
Lita Moore
Rosel & Jeff Moore¹
Robert Morrison
Caroline & Marshall Morton¹
Mt. Pisgah United Methodist Church
Mary Louise Munden
Brian Murphy
Carrie Murray
Robin & Will Muth
Swati Naphade
National Philanthropic Trust
Navigate Affordable Housing Partners
Eliana Neill
Michelle & Jay Nelson
Network for Good
The New Hope Church of God
Brian Newberry
Jennifer Newman
Pauline Ney
Peggy Nieder
Mr. & Mrs. David Nims
Megan Noakes
Northern Trust Charitable Giving Program at the Chicago Community Foundation
Mr. & Mrs. Eric Nost
Emily & Jamie Nowakowski
Ocean Network Express
John O'Dea

Lisa Pratt O'Mara
Justin O'Neill
Debra Ogilvie
Stan Orchowsky
Lori Orr
Linda Owen
Jamie & Ricco Palmore
Meenakshi Panda
Mayankkumar Parekh
Carla Park
Graham Parlow
Daniel Payne
Shavon & Andrew Peacock
Shelia & Paul Pleasants
Connie Pechura & James Ingram¹
D. Sarah Peterson
PGA Tour Charities
Alice Phillips
Tad B. Phillips III
Tricia & Eddie Phillips¹
Vicki Pierson
Christine Plant¹
Kirankumar Pokkuluri
Poolhouse Digital Agency
POS Global Concepts
Phyllis Potter
Jonah Pozen
Ruth Prideaux
Project EngageRVA
Patricia Pulley¹
Helen Ragazzi
Satya Rangarajan
Mr. & Mrs. S. Waite Rawls III
RECO Foundation
Carter & Joe Reid¹
Jan & Bob Reynolds
Agnes & Stephen Richard¹
Betty & David Richardson
Elizabeth Guy Richardson
Mr. & Mrs. William S. Richardson Jr.
Richmond Jewish Foundation
Mr. & Mrs. Paul Riley
Shawn Roe
Martha B. Rogers
Megan & James Rose¹
Fred Rosen
Carolyn Ross
Jennifer & Kevin Ross
Amy Russell
Kimberly Russell
Troy Rysedorph
Brian Sachtjen
SAIC
Michael Sakowitz
Salomon & Ludwin
Jill Salp
Prathyush Samineni
Shweta Sanghi
Mary Ann & Robert Saunders
Sarah Saunders
Randall Sayre
Charles Scher

Elizabeth & Edward Scher¹
Michael Schewel & Priscilla Burbank
Samuel Schneider
Tamara Schomber
Jane Ann Schumann
Schwab Charitable Fund
James Seagraves
Mahendra Seelam
Christopher Seibold
Sentry Insurance
Seventh Street Christian Church
Bonnie & Rob Shama
Pankaj Sharma
Brenda Sharpe
Tammi Sharpe
Marilyn Shaw¹
Karin Sheets
Henry Shen
Lauren & Chris Shephard
Short Pump Insurance
Janet & Lee Showalter¹
Joseph Siciliano
Christie & Evan Silverstein¹
Janet Simmons
Caitlyn Simpson
Amy & Mike Singleton
Susan & Mark Sisisky¹
Ariel Skelley
Evalane Slaughter¹
Polly Smith
Russell Smith
Margaret Smither
Marilyn Smolen
Richard Sowers
Mr. & Mrs. Charles Spraggins
Kevin Stanco
Davis Stanley
Mr. & Mrs. C. Daniel Stevens
Phil Stumpf
Thiagarajan Subramanian
Kelly Sullivan
Mary-Helen Sullivan
Sujatha Sunkara
Heather Sutton
Nathaniel Swanson
Lu Tan
Cathy & David Taylor
Floyd Taylor
TCF Employee Charitable Fund¹
Delores & Joseph Terry¹
Becky & Adam Thalhimer¹
Barbara J. Thalhimer & William B. Thalhimer Jr. Family¹
Marcia & Harry Thalhimer¹
Sathiya Thiruvengadathan
Rhonda Thissen
William Thompson
Kishore Thotakura
TIAA Charitable
Dave Tindall
Terry Toth
Nancy Treanor

Om Prakash Tripathi
Jessica Troutman
Florence G. Tullidge Trust
Martha Tyler
Ukrop's Threads
Unitarian Universal Community Church
United Parcel Service
UPS Ground Freight
U.S. Trust
Utica National Insurance Group
Karen van Veldhoven
Vanguard Charitable Endowment Program
Robert Vaughan
Gomathinavagam Velavutham
Kimberly Vellozzi
Virginia Academy of Family Physicians
Virginia Green Lawn Care, Richmond
Susanna Vorster
Janet & Mark Walker¹
Janice Walker¹
Jeffrey Walker & Timothy Schoenman
Carol Wampler¹
Warren Whitney
Anne Waters
Mr. & Mrs. William Weber
Ludi & Butch Webber¹
Laura Welch
H. Daulton West Jr.
Western Henrico Rotary Club
Anne Whittemore¹
Mary & George Wickham
Margaret Wiker
Laura & Howard Willard
Stephen Williard
Susan Williams
Erin Wilmoth
Suzanne Wimett
Donna Wine
Woman's Club of Bon Air
Wonder Fund¹
Ricky Wong
Mary Woodbridge
Cheryl & James Woodward¹
LeeAnne Wright
Mr. & Mrs. Wesley Wright Jr.
Yu Zhang

¹ Contributions from donor advised funds at the Community Foundation



Thank You

Connect with us and let’s discuss how we can make the Greater Richmond region a better place.

givingtogether@cfrichmond.org | www.cfrichmond.org | (804) 330-7400



The Community Foundation, Inc.
Serving Richmond and Central Virginia
3409 Moore Street | Richmond, VA 23230
(804) 330-7400 | www.cfrichmond.org