

# Covid-19 Pandemic Transportation Dashboard

CTAC Meeting  
September 17, 2020


# COVID-19 Transportation Dashboard

## TRANSPORTATION

- PRODUCTS
- ALL ABOUT TRANSPORTATION
- TRANSPORTATION PLANNING IN OUR REGION
- STATEWIDE PLANNING & PROGRAMMING
- UNIFIED PLANNING WORK PROGRAM
- RURAL LONG RANGE TRANSPORTATION PLAN
- PUBLIC ENGAGEMENT PLAN
- BEST PRACTICES
- ABOUT US
- PUBLIC NOTICES

### RRTPO Snapshots

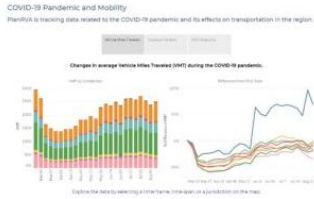
This section will be periodically updated to highlight particular work products of the RRTPO that may be useful for the public and help to provide more understanding of the work we do and its impacts to the residents of the Richmond Region.



**Park and Ride**  
An investment strategy for the Richmond Region

Our Park and Ride study, adopted on 12/5/19 by the TPO Policy Board, sets forth strategic guidance for the localities and their partners to leverage park and ride lots in the Richmond region as an important part of the overall travel demand management strategy to enhance mobility.

[Learn more about Park and Ride planning in the Richmond region.](#)



COVID-19 Pandemic and Mobility  
PlanRVA is tracking data related to the COVID-19 pandemic and its effects on transportation in the region.

Changes in average Vehicle Miles Traveled (VMT) during the COVID-19 pandemic.

PlanRVA is tracking changes in mobility in the region during the COVID-19 pandemic. Vehicle Miles Traveled (VMT) statistics developed by StreetLight Data, and Trips by Distance statistics from the Bureau of Transportation Statistics have been integrated into two interactive dashboards.

[Review the data on the dashboards](#)

[planrva.org/transportation](https://planrva.org/transportation)  
or directly at  
[planrva.org/transportation/covid-19-pandemic](https://planrva.org/transportation/covid-19-pandemic)

# COVID-19 Transportation Dashboard

- StreetLight Data  
Vehicle Miles Traveled
- Bureau of Transportation Statistics  
Distance Traveled  
Percent of the Population Staying Home
- GRTC Transit Company  
Daily Ridership

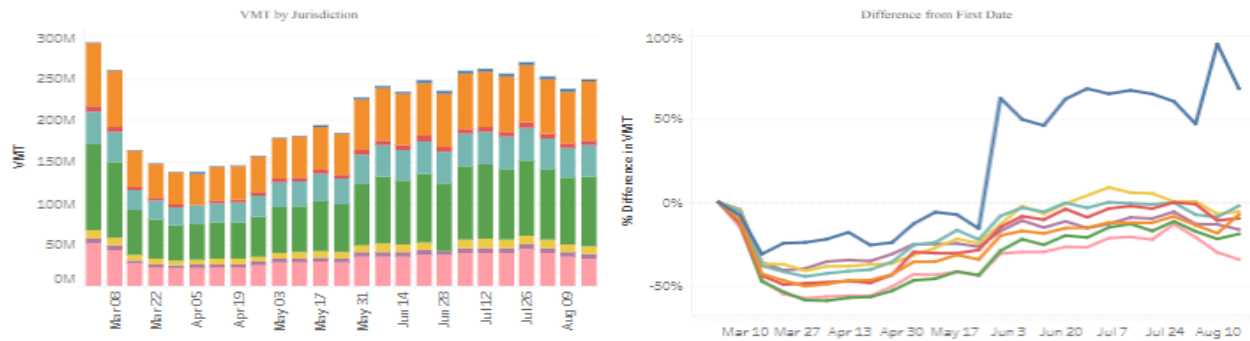
# Vehicle Miles Traveled

## COVID-19 Pandemic and Mobility

PlanRVA is tracking data related to the COVID-19 pandemic and its effects on transportation in the region.

Vehicle Miles Traveled
  Distance Traveled
  GRTC Ridership

Changes in average Vehicle Miles Traveled (VMT) during the COVID-19 pandemic.



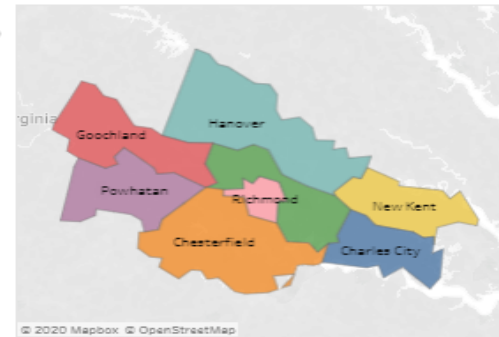
Explore the data by selecting a time frame, time span, or a jurisdiction on the map.

Select a Time Frame: **Week** | Weekday | Weekend

Select a Time Span: March 2, 2020 | August 17, 2020

### Important Dates

- March 16: Schools close
- March 30: Stay at Home order is issued
- May 15: Phase One reopening begins - City of Richmond exempt
- May 29: Phase One reopening begins for the City of Richmond
- May 29: First night of protests
- June 5: Phase Two reopening begins
- July 1: Phase Three reopening begins
- Sept 8: Schools reopen



VMT statistics developed by StreetLight Data. [https://www.streetlightdata.com/VMT-monitor-by-county/?utm\\_source=va-transport](https://www.streetlightdata.com/VMT-monitor-by-county/?utm_source=va-transport)

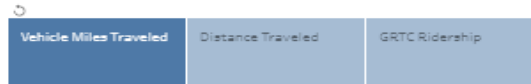
tableau

Navigation icons: back, forward, search, refresh, print, zoom in, zoom out.

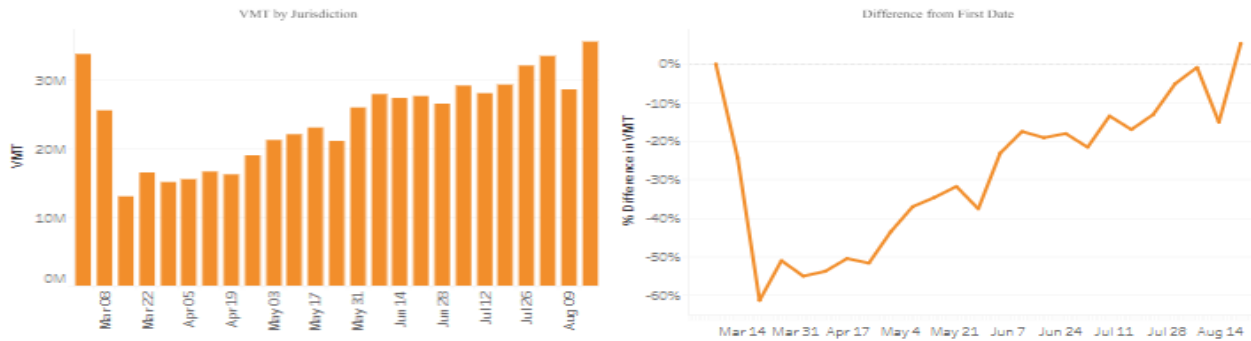
# Vehicle Miles Traveled

## COVID-19 Pandemic and Mobility

PlanRVA is tracking data related to the COVID-19 pandemic and its effects on transportation in the region.



Changes in average Vehicle Miles Traveled (VMT) during the COVID-19 pandemic.



Explore the data by selecting a time frame, time span, or a jurisdiction on the map.

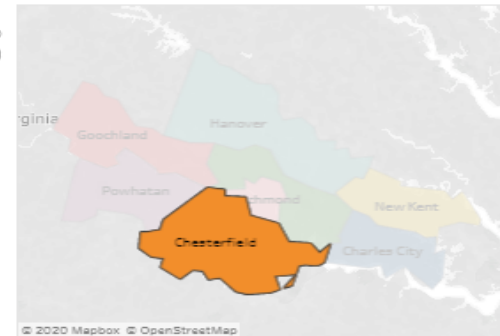
Select a Time Frame: Week Weekday **Weekend**

Select a Time Span: March 6, 2020 August 21, 2020

### Important Dates

- March 16 Schools close
- March 30 Stay at Home order is issued
- May 15 Phase One reopening begins - City of Richmond exempt
- May 29 Phase One reopening begins for the City of Richmond
- May 29 First night of protests
- June 5 Phase Two reopening begins
- July 1 Phase Three reopening begins
- Sept 8 Schools reopen

VMT statistics developed by StreetLight Data. <https://www.streetlightdata.com/VMT-monitor-by-county/2020-03-08-08-21-2020>



+ a b l e a u

Navigation icons: back, forward, search, zoom in, zoom out, full screen.

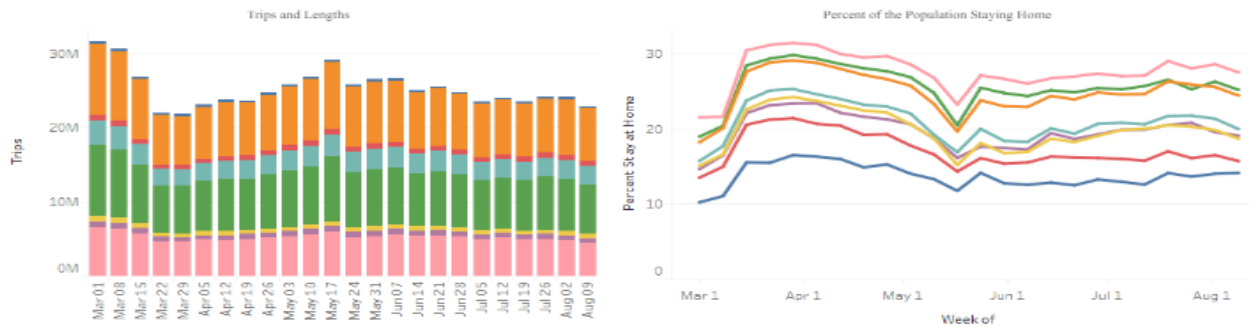
# Distance Traveled

## COVID-19 Pandemic and Mobility

PlanRVA is tracking data related to the COVID-19 pandemic and its effects on transportation in the region.

Vehicle Miles Traveled | **Distance Traveled** | GRTC Ridership

Changes in Distance Traveled during the COVID-19 pandemic.



Explore the data by selecting a time frame, time span, or a jurisdiction on the map.

Select Time Span: March 1, 2020 to August 9, 2020

Trip Length: (All)

### Important Dates

- March 16 Schools close
- March 30 Stay at Home order is issued
- May 15 Phase One reopening begins - City of Richmond exempt
- May 29 Phase One reopening begins for the City of Richmond
- May 29 First night of protests
- June 5 Phase Two reopening begins
- July 1 Phase Three reopening begins
- Sept 8 Schools reopen



Data estimated for the Bureau of Transportation Statistics by the Center for Advanced Transportation Technology Laboratory at the University of Maryland.  
<https://www.bts.gov/browse-statistical-products-and-data/trips-distance/daily-travel-during-covid-19-pandemic>

+ a b l e a u

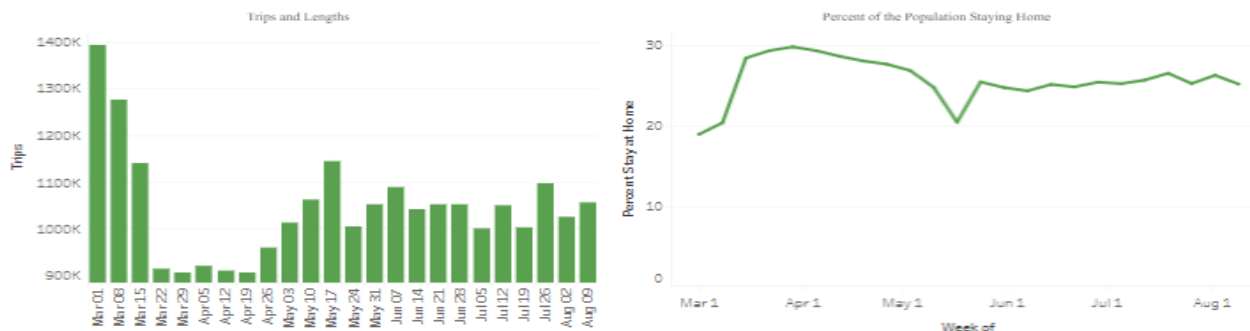
# Distance Traveled

## COVID-19 Pandemic and Mobility

PlanRVA is tracking data related to the COVID-19 pandemic and its effects on transportation in the region.



Changes in Distance Traveled during the COVID-19 pandemic.

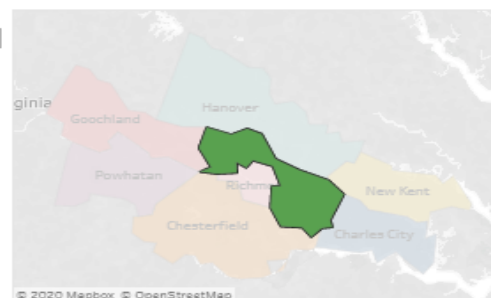


Explore the data by selecting a time frame, time span, or a jurisdiction on the map.



### Important Dates

- March 16 Schools close
- March 30 Stay at Home order is issued
- May 15 Phase One reopening begins - City of Richmond exempt
- May 29 Phase One reopening begins for the City of Richmond
- May 29 First night of protests
- June 5 Phase Two reopening begins
- July 1 Phase Three reopening begins
- Sept 8 Schools reopen



Data estimated for the Bureau of Transportation Statistics by the Center for Advanced Transportation Technology Laboratory at the University of Maryland.  
<https://www.bts.gov/browse-statistical-products-and-data/trips-distance/daily-travel-during-covid-19-pandemic>

Tableau



# GRTC Ridership

## COVID-19 Pandemic and Mobility

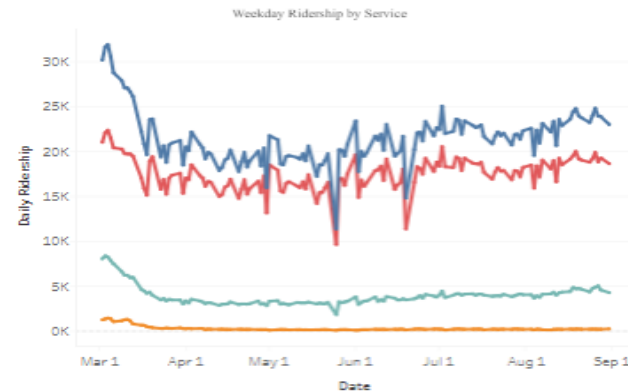
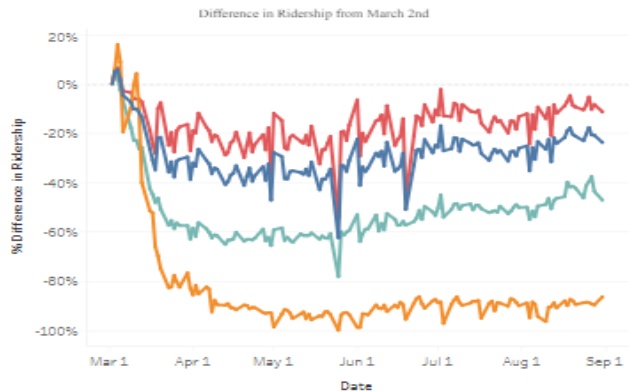
PlanRVA is tracking data related to the COVID-19 pandemic and its effects on transportation in the region.

Vehicle Miles Traveled | Distance Traveled | **GRTC Ridership**

Changes in GRTC Ridership during the COVID-19 pandemic.

Explore the data by selecting a type of service.

All Express Local PULSE

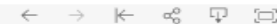


### Important Dates

- March 16 Schools close
- March 30 Stay at Home order is issued
- May 15 Phase One reopening begins - City of Richmond exempt
- May 29 Phase One reopening begins for the City of Richmond
- May 29 First night of protests
- June 5 Phase Two reopening begins
- July 1 Phase Three reopening begins
- Sept 8 Schools reopen

Data provided by GRTC Company <http://rtd.grtc.com/statistics-reports/ridership-reports/>

tableau





# GRTC Ridership

## COVID-19 Pandemic and Mobility

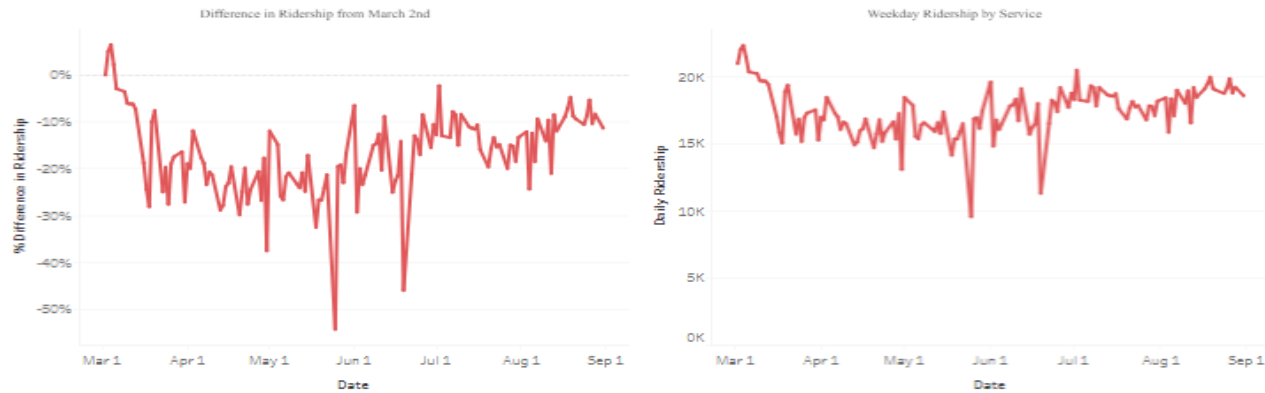
PlanRVA is tracking data related to the COVID-19 pandemic and its effects on transportation in the region.

Vehicle Miles Traveled Distance Traveled **GRTC Ridership**

Changes in GRTC Ridership during the COVID-19 pandemic.

Explore the data by selecting a type of service.

All Express **Local** PULSE

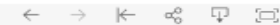


### Important Dates

- March 16 Schools close
- March 30 Stay at Home order is issued
- May 15 Phase One reopening begins - City of Richmond exempt
- May 29 Phase One reopening begins for the City of Richmond
- May 29 First night of protests
- June 5 Phase Two reopening begins
- July 1 Phase Three reopening begins
- Sept 8 Schools reopen

Data provided by GRTC Company <https://data.grtc.com/statistics/reports/ridership-2020/>

tableau



# Questions

Greta Ryan  
Senior Planner  
gryan@PlanRVA.org



Richmond Regional  
**Transportation  
Planning  
Organization**

SUPPORTED BY **PlanRVA**  
THE REGIONAL  
COMMISSION