

Rebekah Cazares

VCU Master of Urban & Regional Planning Student
Wilder Fellow at PlanRVA

Capstone / Professional Plan Project

Topic:

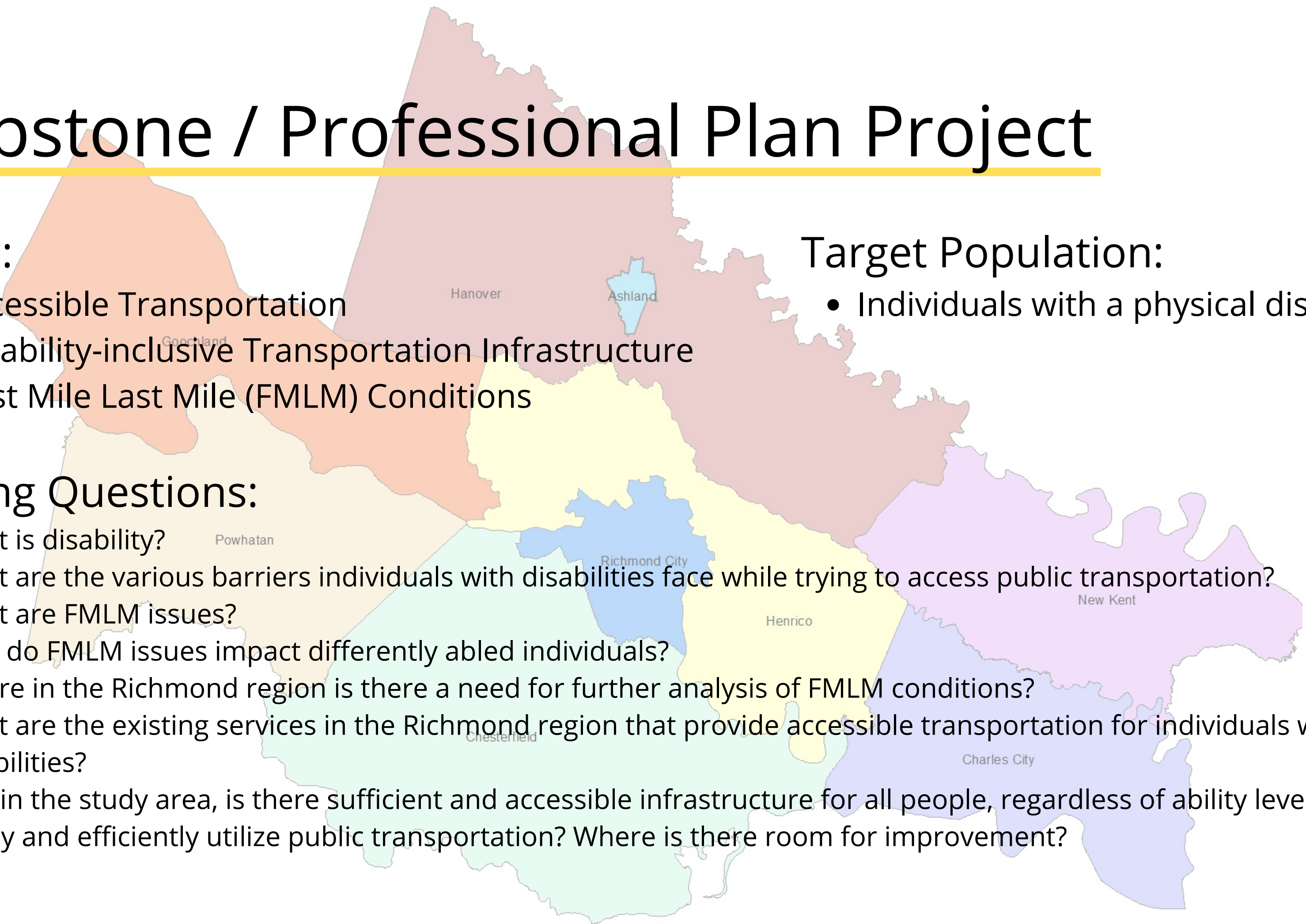
- Accessible Transportation
- Disability-inclusive Transportation Infrastructure
- First Mile Last Mile (FMLM) Conditions

Target Population:

- Individuals with a physical disability

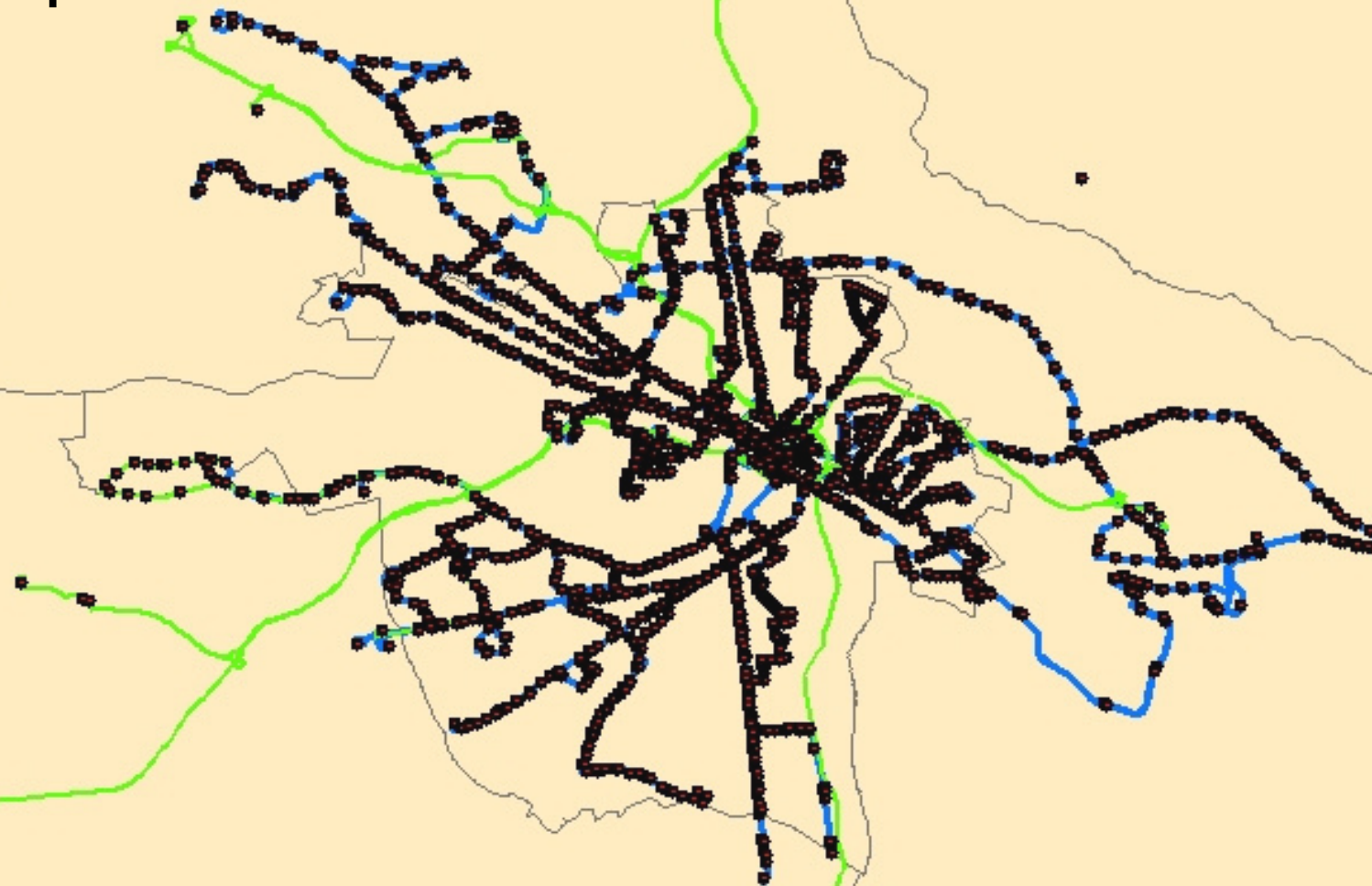
Driving Questions:

- What is disability?
- What are the various barriers individuals with disabilities face while trying to access public transportation?
- What are FMLM issues?
- How do FMLM issues impact differently abled individuals?
- Where in the Richmond region is there a need for further analysis of FMLM conditions?
- What are the existing services in the Richmond region that provide accessible transportation for individuals with disabilities?
- Within the study area, is there sufficient and accessible infrastructure for all people, regardless of ability level, to safely and efficiently utilize public transportation? Where is there room for improvement?



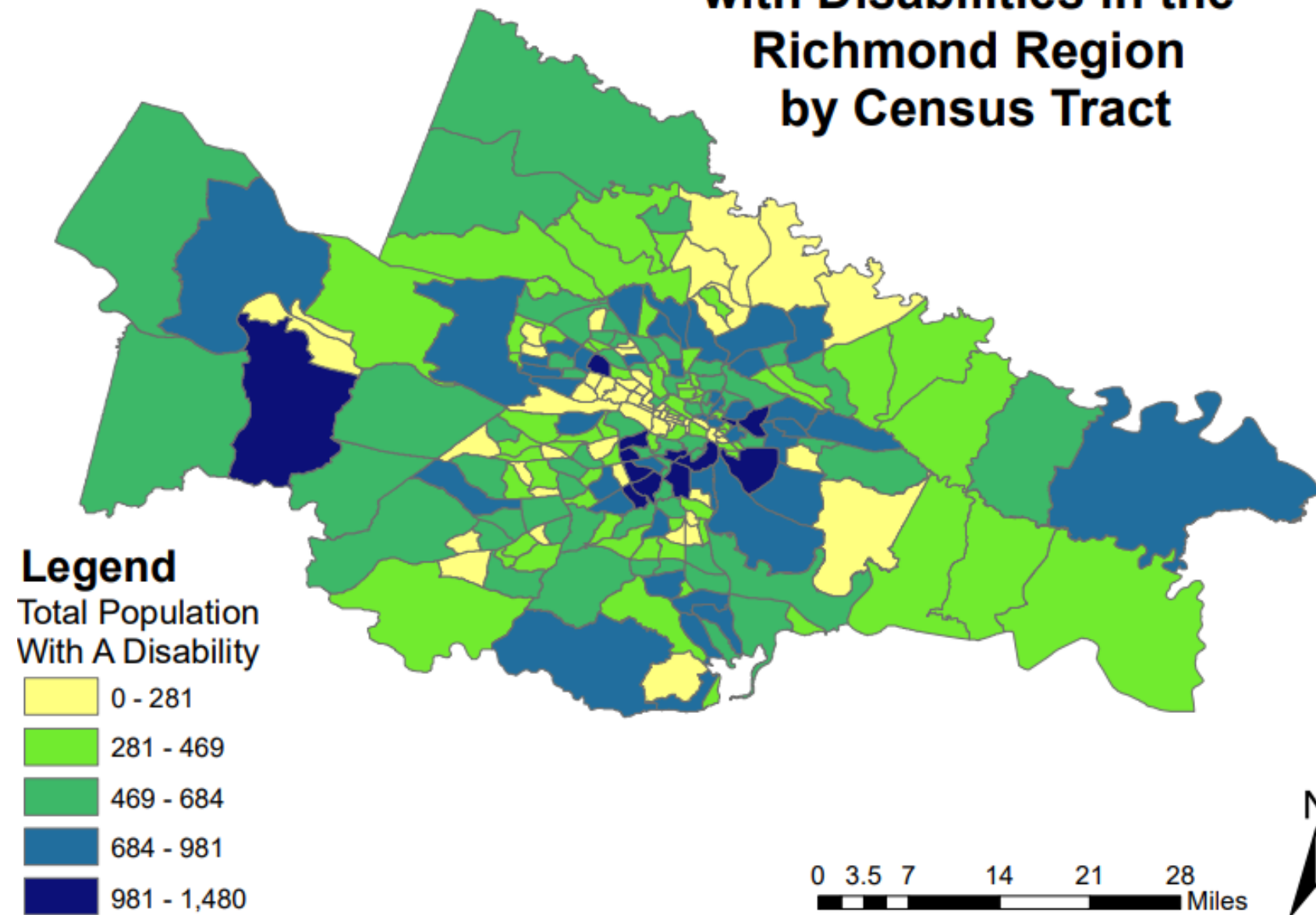
Criteria for Determining a Study Area

- Total population living with a disability
- % living with a disability
- % that utilizes public transportation
- % with no car
- % 65 years old and up
- % minority
- % in poverty



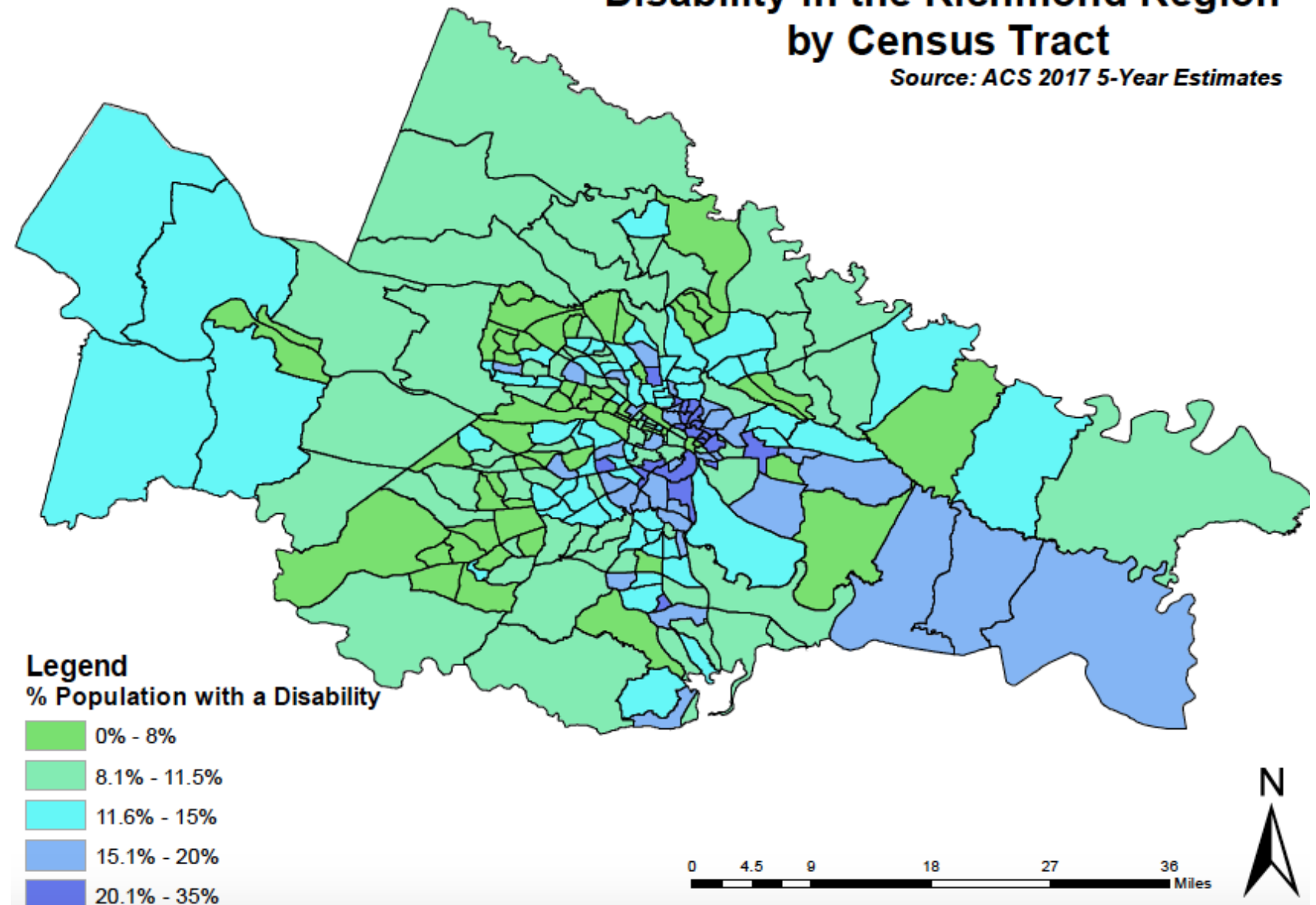
Regional Analysis

**Total Population of Individuals
with Disabilities in the
Richmond Region
by Census Tract**

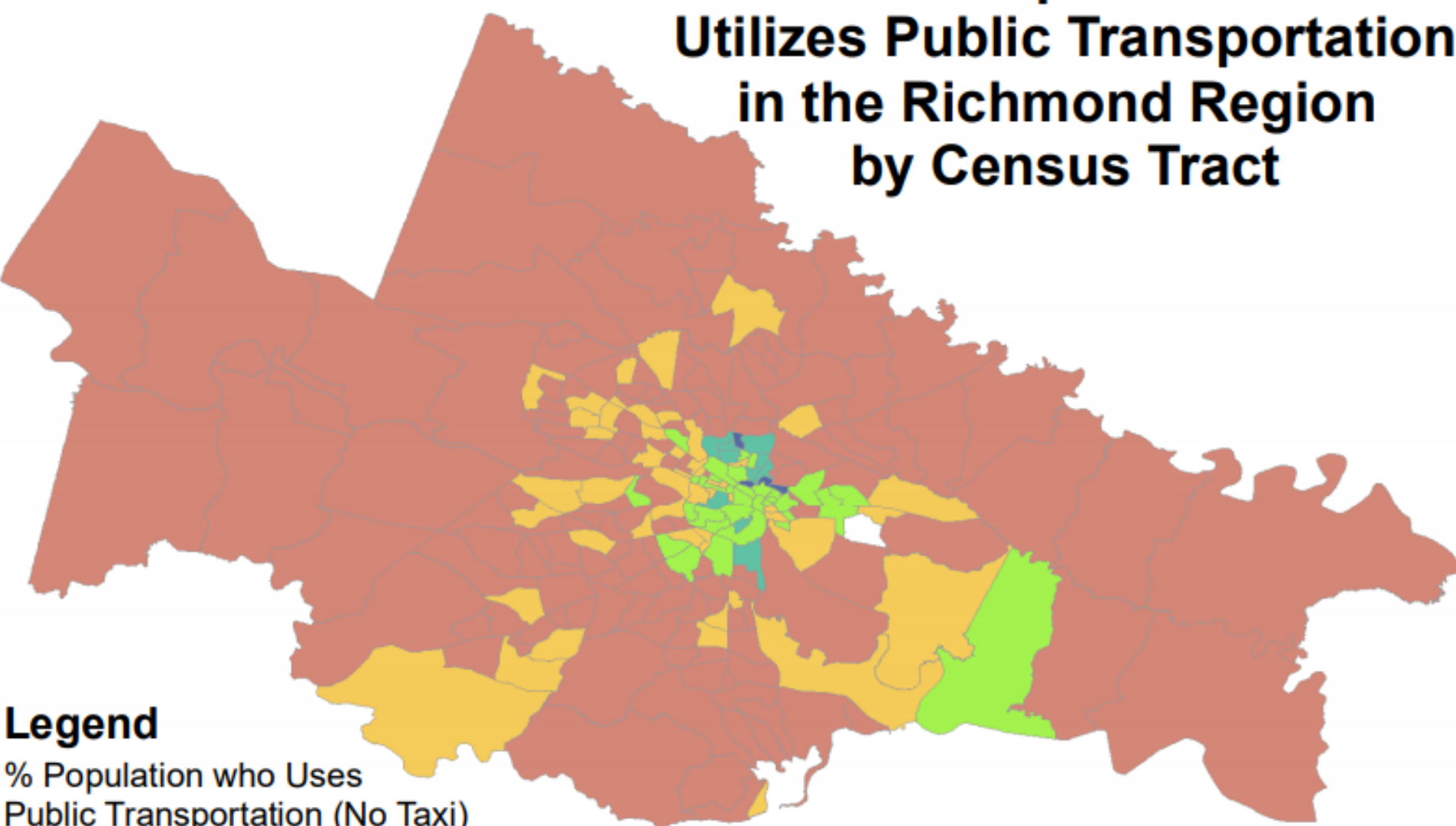


**Percent of the Population with a
Disability in the Richmond Region
by Census Tract**

Source: ACS 2017 5-Year Estimates

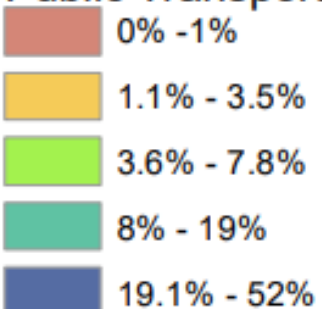


**Percent Population That
Utilizes Public Transportation
in the Richmond Region
by Census Tract**



Legend

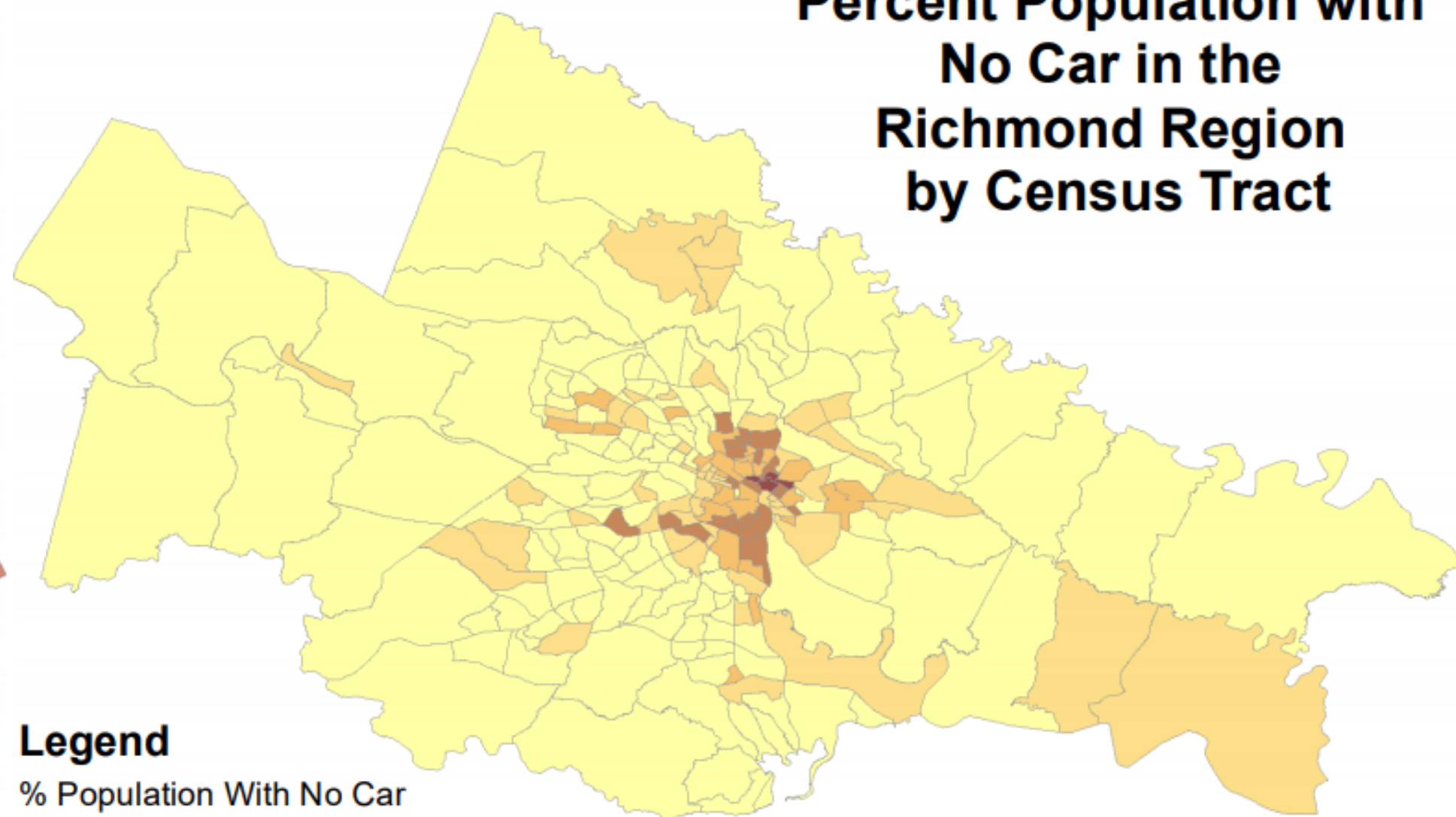
% Population who Uses
Public Transportation (No Taxi)



0 3.5 7 14 21 28 Miles

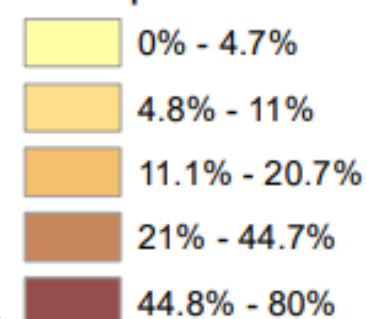


**Percent Population with
No Car in the
Richmond Region
by Census Tract**



Legend

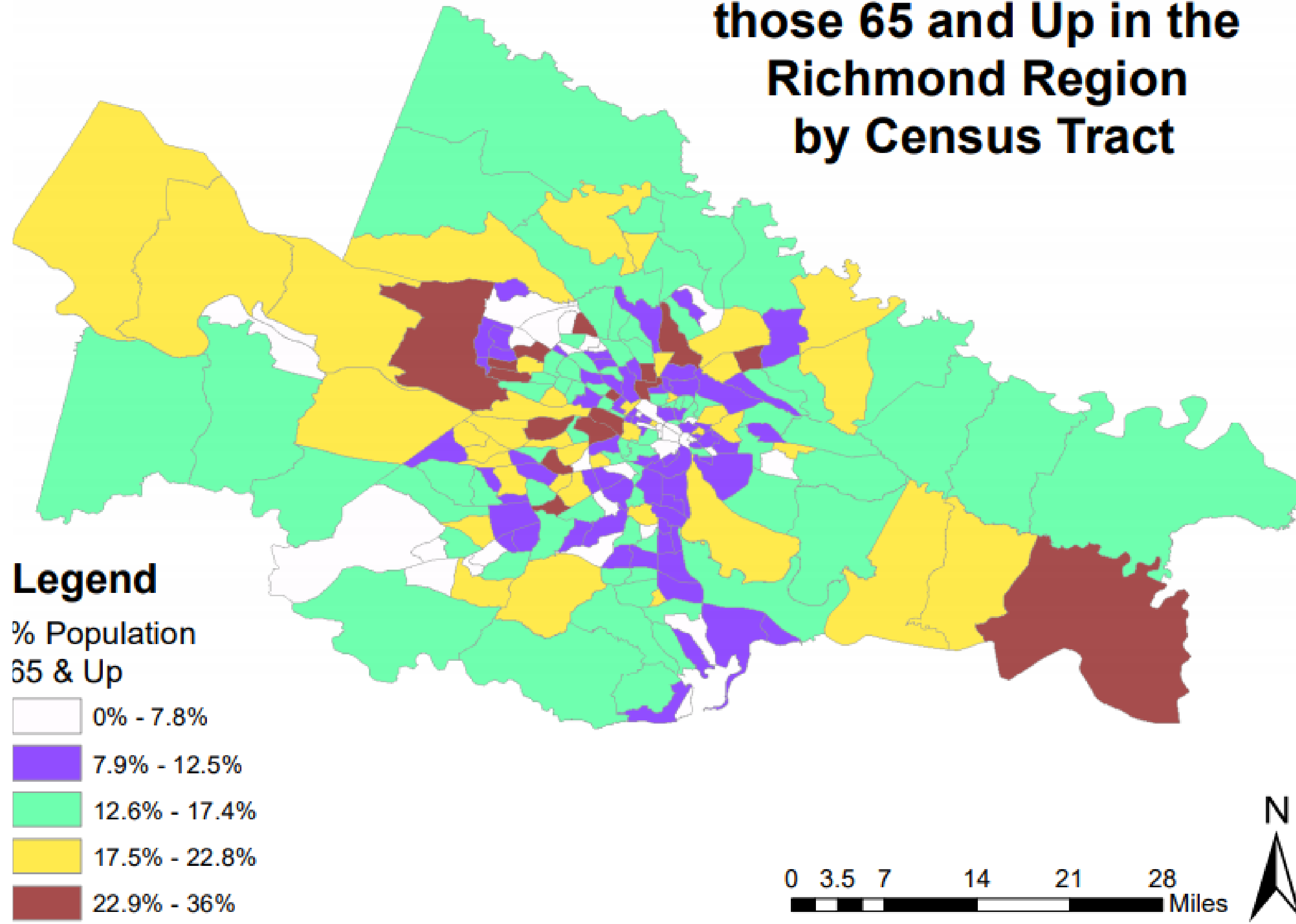
% Population With No Car



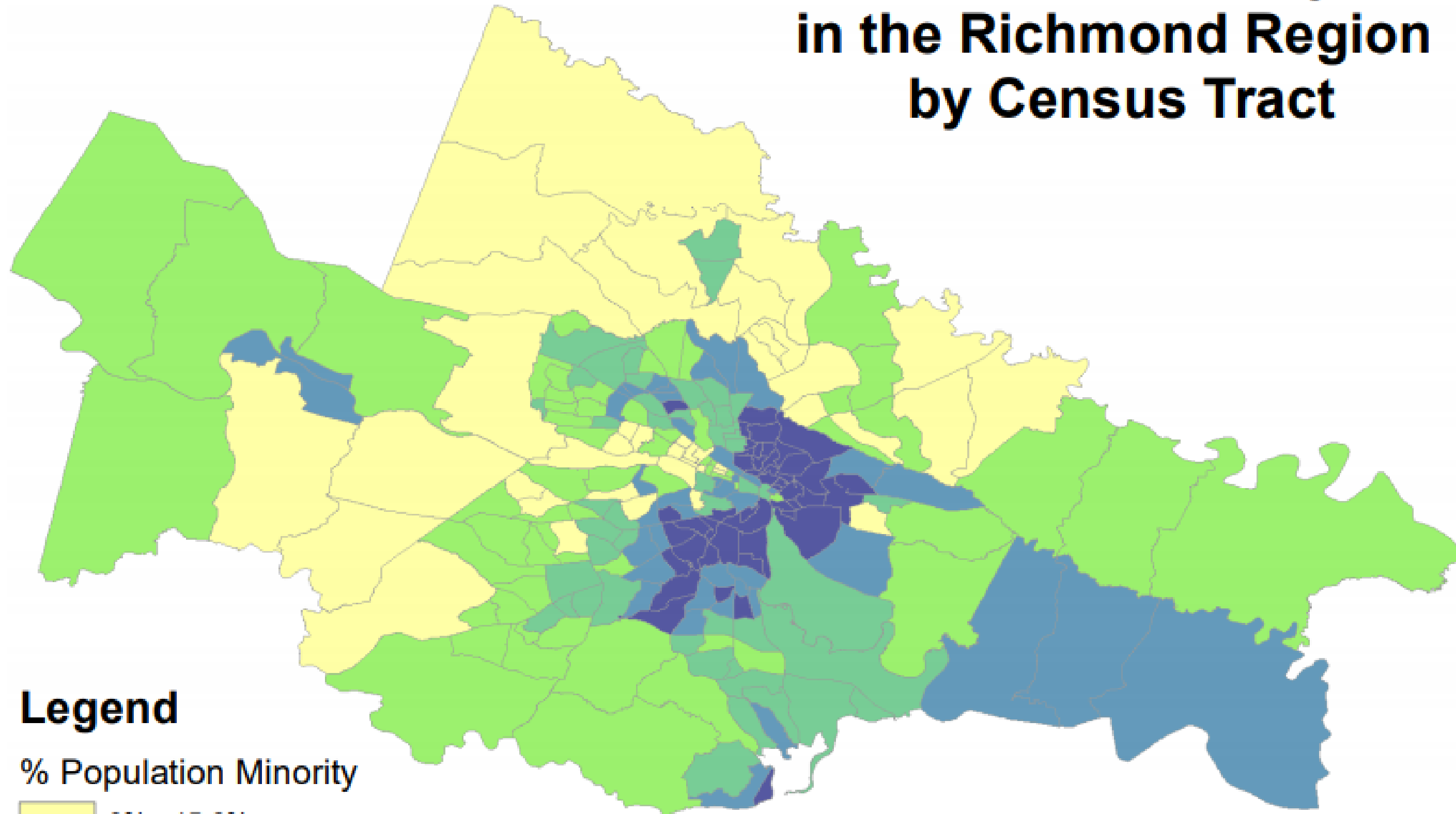
0 3.5 7 14 21 28 Miles



Percent Population of those 65 and Up in the Richmond Region by Census Tract

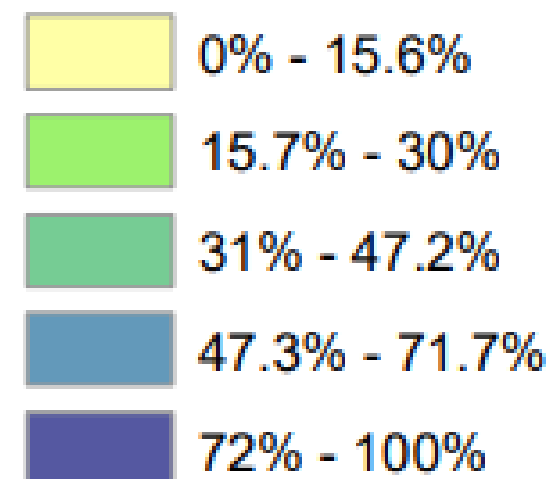


Percent Minority in the Richmond Region by Census Tract



Legend

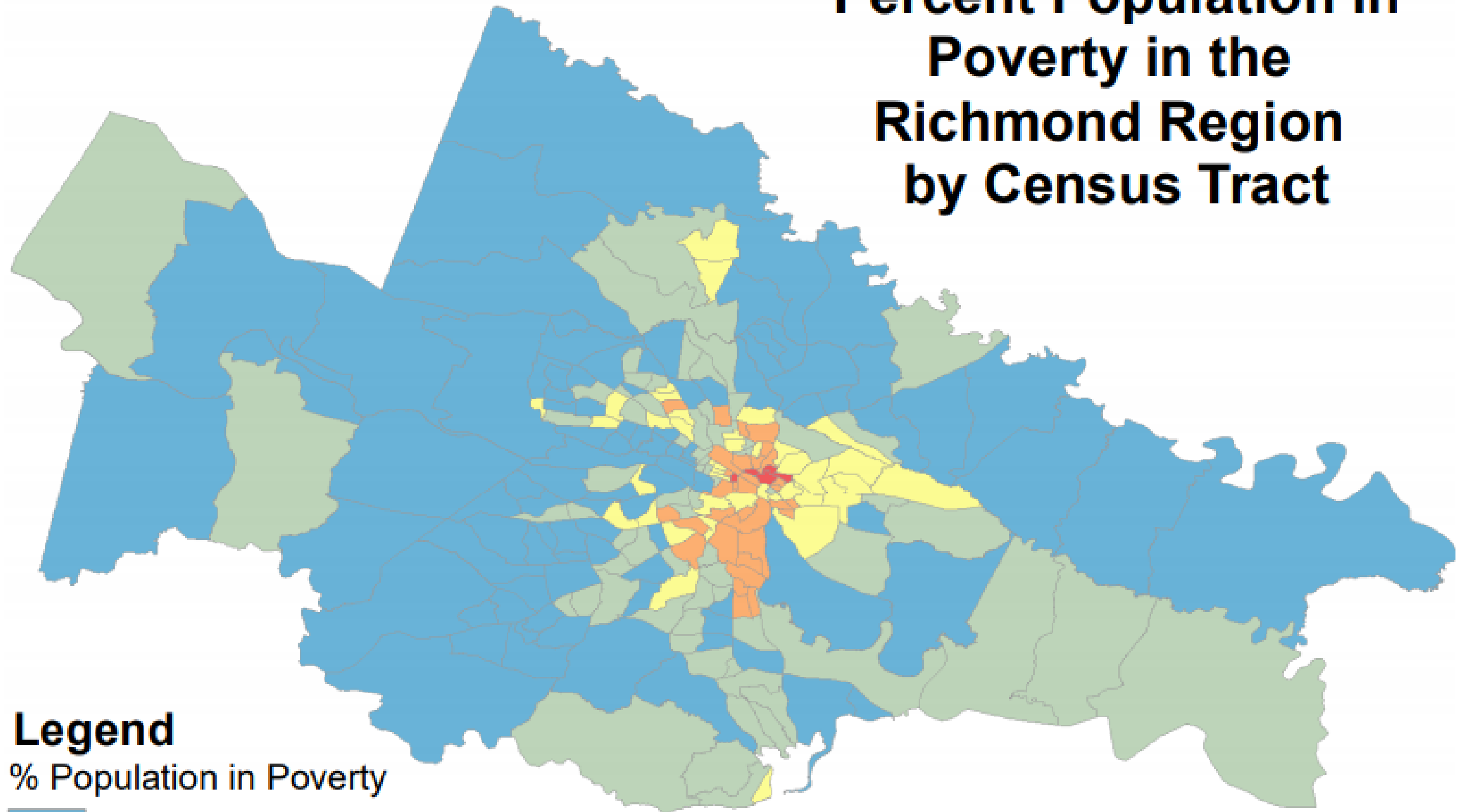
% Population Minority



0 3.5 7 14 21 28 Miles

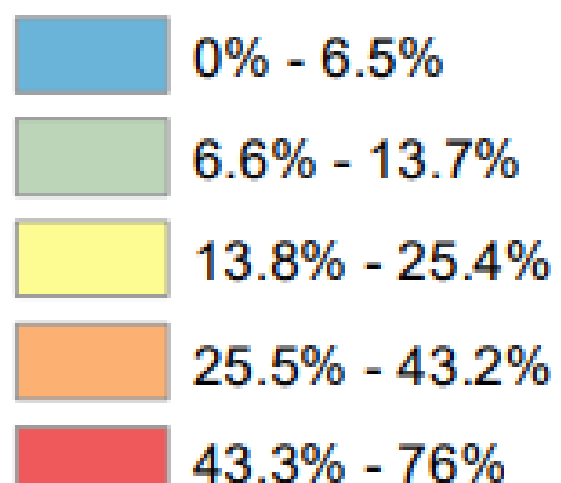


Percent Population in Poverty in the Richmond Region by Census Tract

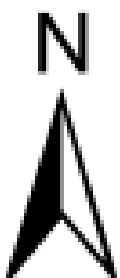


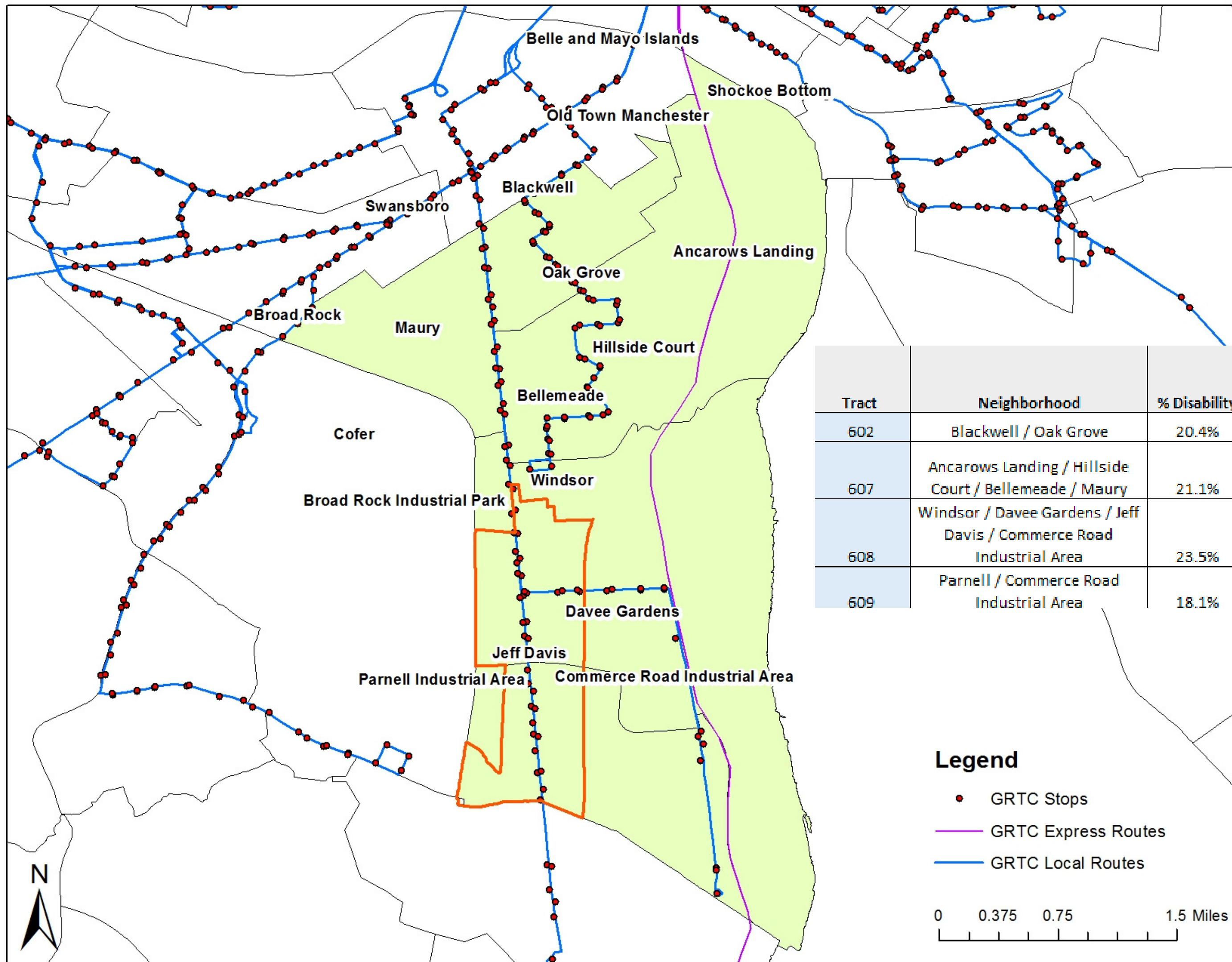
Legend

% Population in Poverty



0 3.5 7 14 21 28 Miles





Tract	Neighborhood	% Disability	% Use Public Transportation	% With No Car	% Minority	% In Poverty
602	Blackwell / Oak Grove	20.4%	10.6%	24.5%	88.6%	29.1%
607	Ancarows Landing / Hillside Court / Bellemeade / Maury	21.1%	6.9%	34.0%	90.7%	37.9%
608	Windsor / Davee Gardens / Jeff Davis / Commerce Road Industrial Area	23.5%	9.2%	27.8%	92.1%	35.2%
609	Parnell / Commerce Road Industrial Area	18.1%	0.0%	16.2%	76.4%	41.8%

Legend

- GRTC Stops
- GRTC Express Routes
- GRTC Local Routes

0 0.375 0.75 1.5 Miles

Contact Information:

Email: cazaresra@mymail.vcu.edu

Phone: (804) 247 - 6236