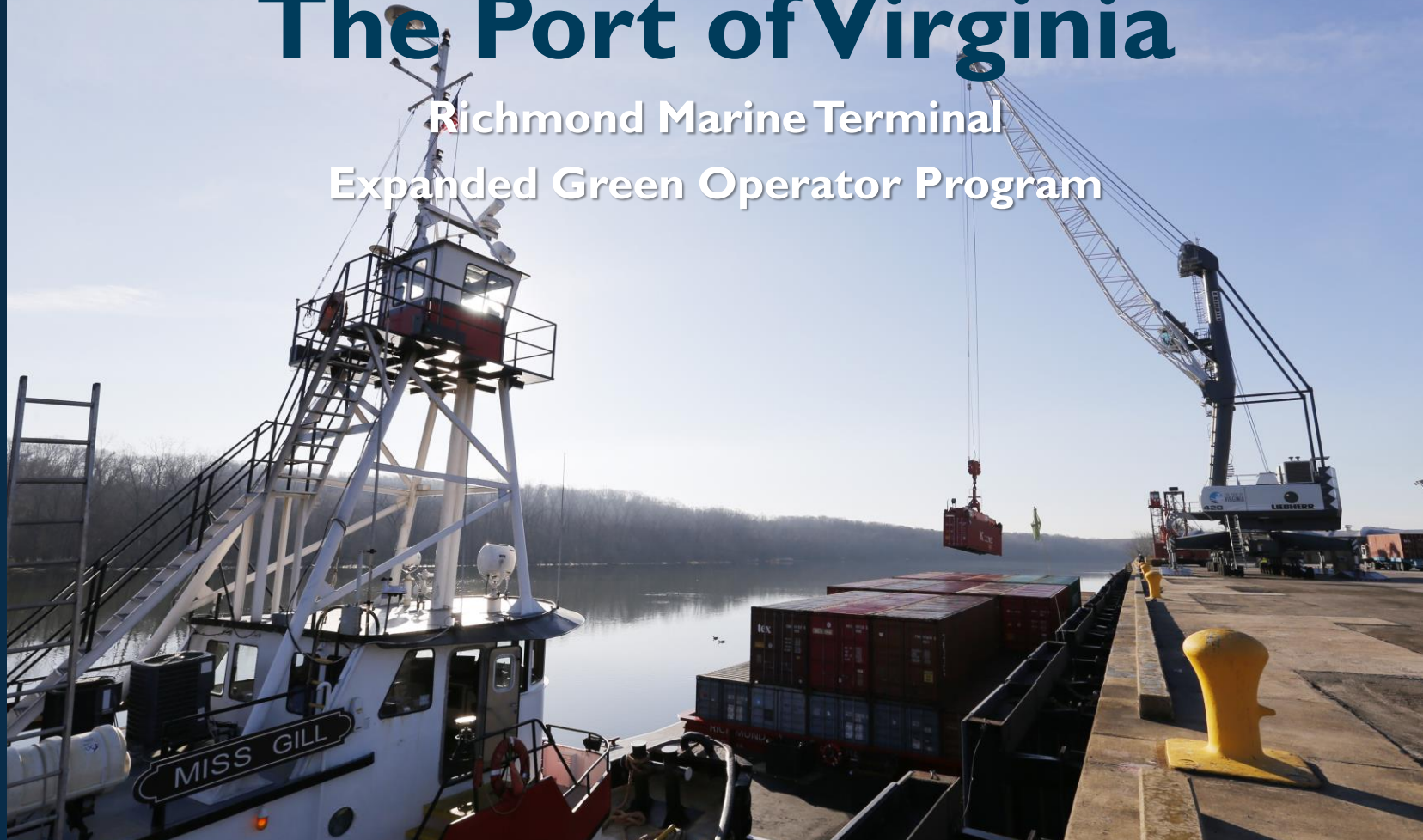


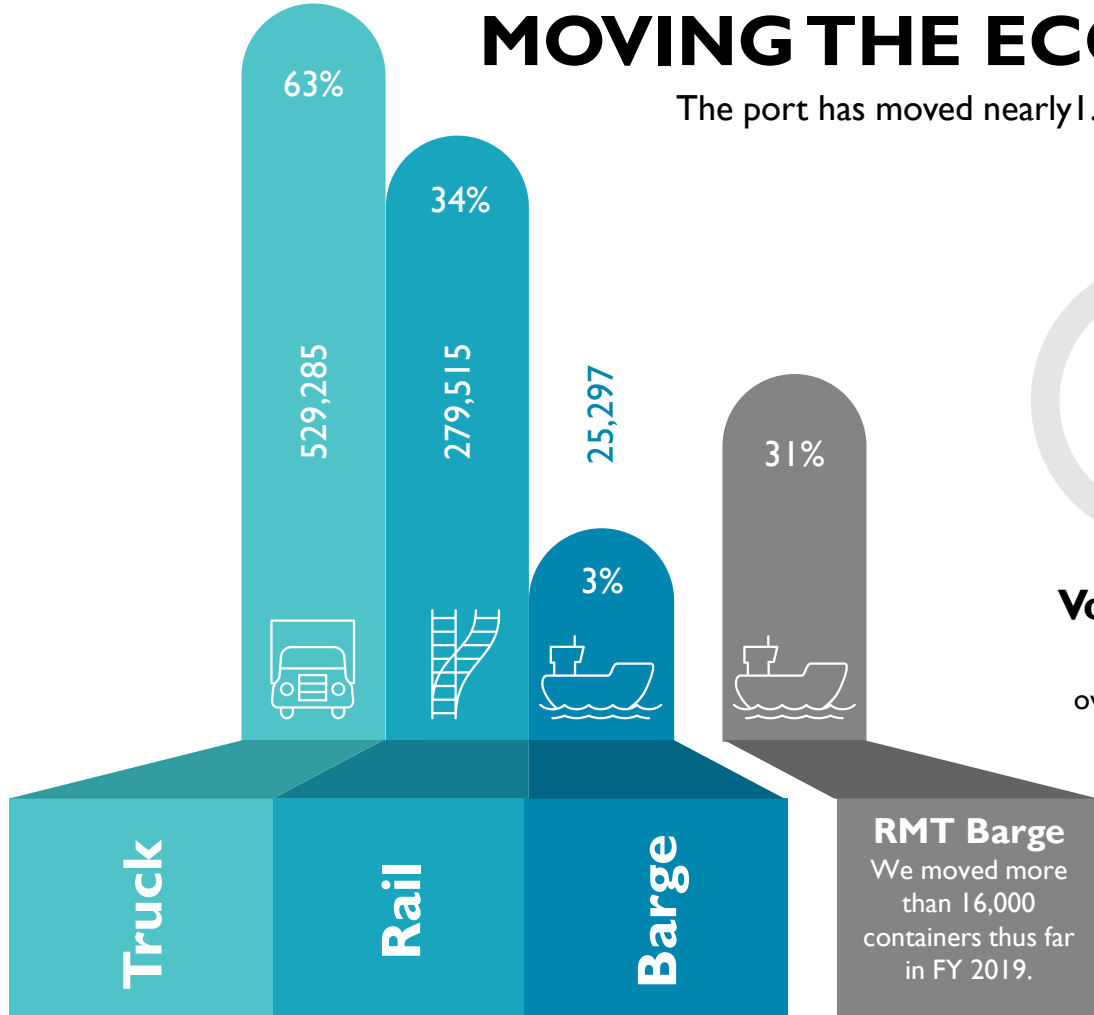
The Port of Virginia

Richmond Marine Terminal Expanded Green Operator Program

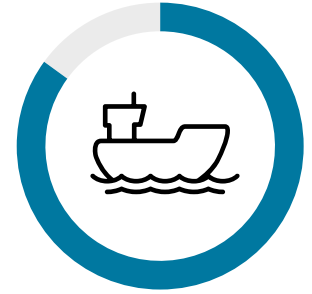


MOVING THE ECONOMY: FYTD 19

The port has moved nearly 1.5 million TEUs to date in Fiscal Year 2019

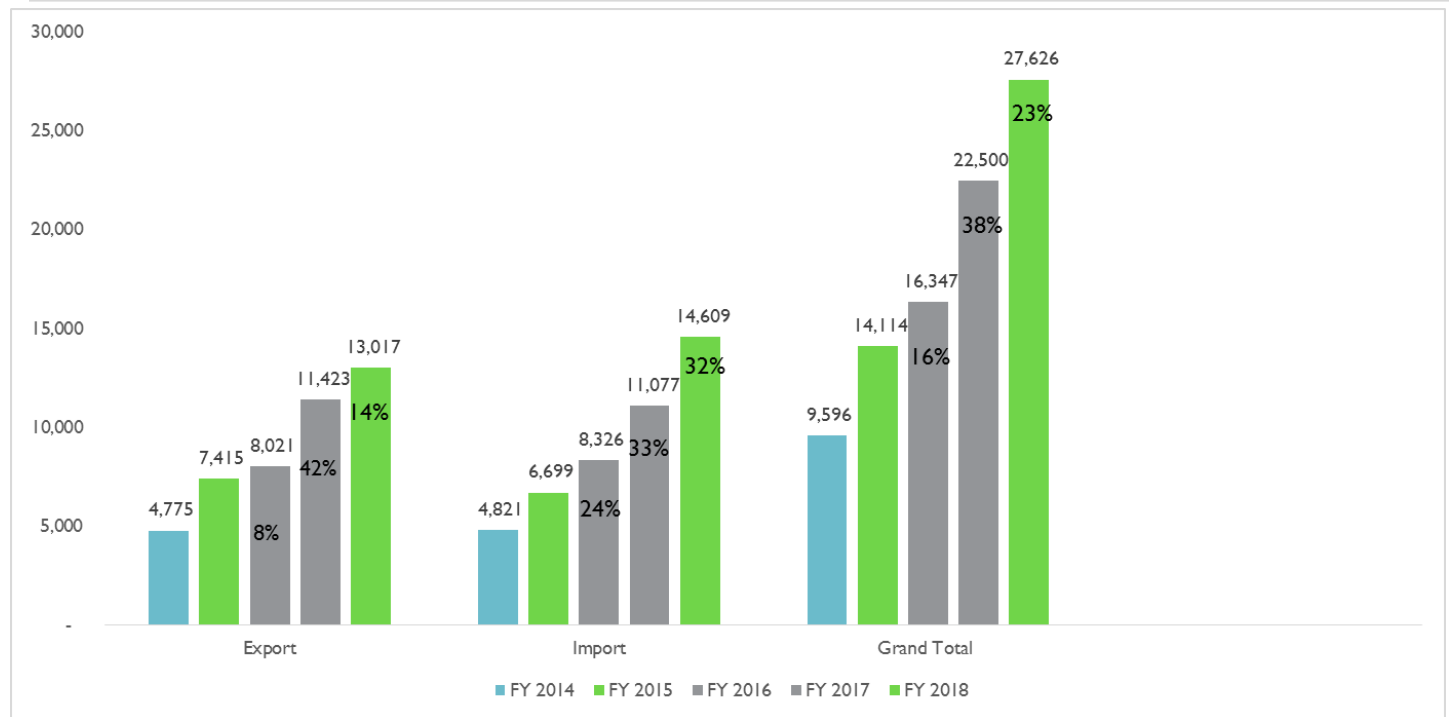


Volumes are up 1.9%
over FYTD 2018



Vessel calls are down 5.6%
compared to FYTD 2018

VOLUME GROWTH AT RMT



MARINE HIGHWAY EMISSION REDUCTION

Annual 2017		Emissions (Tons)					
	Trips	NOx	CO	HC	PM10	SO2	CO2
Truck Service	23,994	31.38	8.81	1.47	1.44	0.06	5,048.90
Barge Service	148	27.93	5.06	1.51	0.80	0.03	2,589.31
Difference		-3.45	-3.75	0.04	-0.64	-0.03	-2,459.59
%CHG		-11%	-43%	3%	-44%	-47%	-49%

Annual 2018		Emissions (Tons)					
	Trips	NOx	CO	HC	PM10	SO2	CO2
Truck Service	31,544	41.49	11.58	1.93	1.89	0.07	6,637.60
Barge Service	169	31.89	5.78	1.73	0.97	0.04	2,966.37
Difference		-9.60	-5.80	-0.20	-0.92	-0.03	-3,671.23
%CHG		-23%	-50%	-10%	-49%	-43%	-55%

CUSTOMERS USING THE BARGE

- Avail Vapor
- Evergreen Enterprises
- Florida Tile
- Lidl
- Luck Stone
- Lumber Liquidators
- Philip Morris / Altria
- Plow & Hearth
- RI Rubber
- Scoular Grain
- Universal Leaf Tobacco
- WestRock



An aerial photograph showing the Richmond Marine Terminal along a river. The terminal features a large covered barge dock, numerous colorful shipping containers, and a mobile harbor crane. In the background, there is an industrial facility with various buildings, storage tanks, and a parking lot. A highway and a bridge are also visible in the distance.

Richmond Marine Terminal

- **New \$4.2 million mobile harbor crane**
- **\$600,000 in rail improvements**
- **Mobile generator for refrigerated cargo**
- **52K Forklift**
- **Preparing for the future: Larger barge with 50% more capacity and additional sailings**

NEW OPPORTUNITIES



Thank you