
Coordinated Human Service Mobility Plan

2019 Update

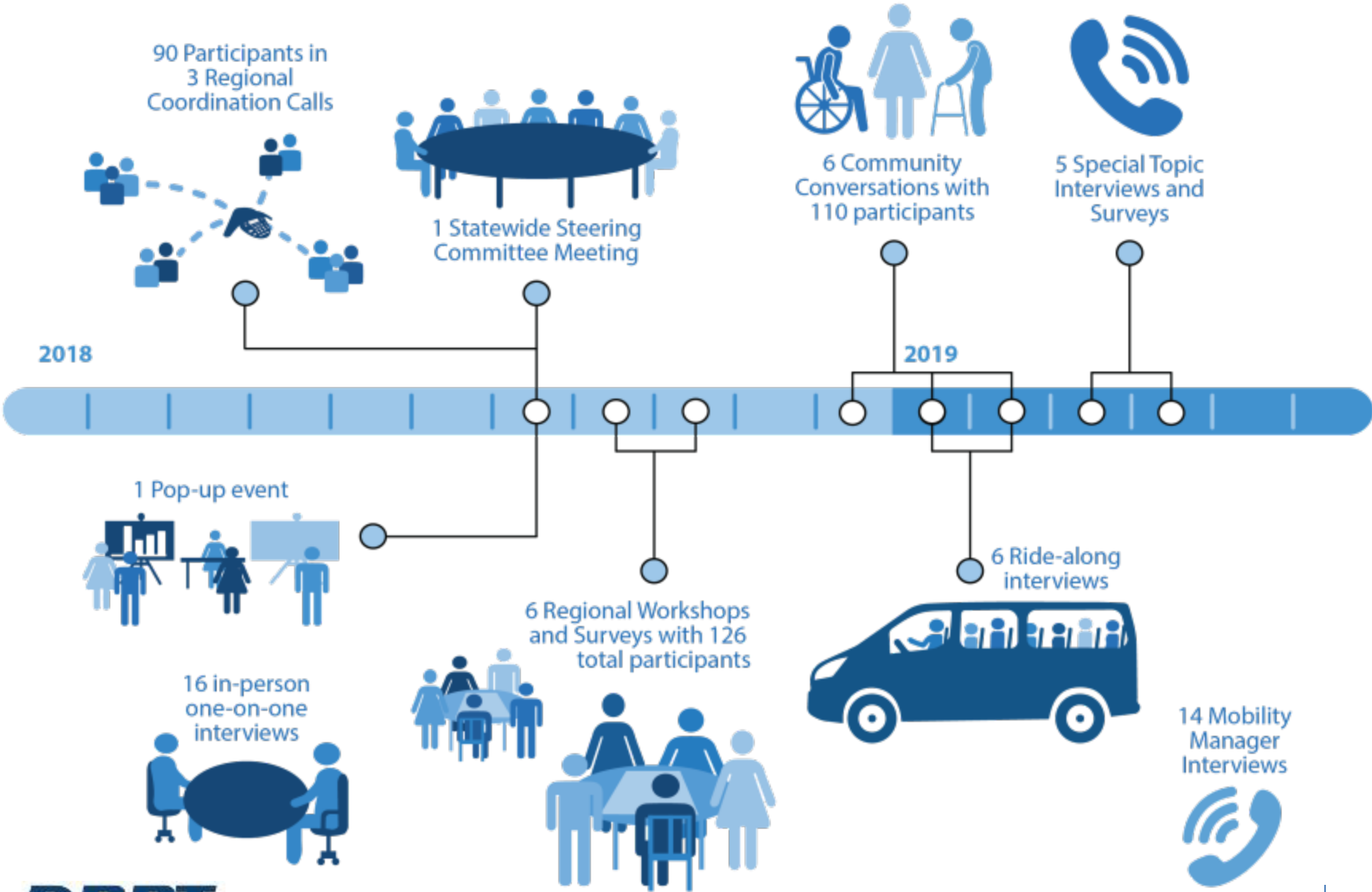
Brittany Voll, Transit Program Manager
Department of Rail and Public Transportation



Federal Requirement

- DRPT is the lead agency for developing the CHSM plan for most of Virginia
 - The urbanized Northern Virginia area is included in MWCOCG's plan
- A CHSM plan must include input from seniors; individuals with disabilities; representatives of public, private, and nonprofit transportation and human service providers; and other members of the public
 - DRPT's process to update the plan and include these groups in its development began in early 2018 and ended with a public comment period in fall 2019

Outreach Timeline



Former Plans

- In previous years, we developed the CHSM Plans by planning district commission (PDC) region
 - More than 20 plans
 - Required annual grant applicant notification to the appropriate PDC
- Dividing plans in this way did not allow us to identify statewide gaps or make recommendations to address them

Update Process

- The approach for this update was to develop one statewide plan with regional elements
 - Many of the challenges that exist in one region exist in another.
- The new plan contains regional elements that address the unique challenges, needs, and goals of a single region while recognizing statewide gaps and goals

OVERVIEW OF VIRGINIA REGIONS

Figure 1. Overview of Virginia Regions

ALLEGHANY REGION

Population: 544,292
65+ Population: 108,858 (20.0%)
Residents with Disability: 75,000 (14.0%)
Residents in Poverty: 75,000 (14.0%)
Regional Challenges: Safety of vulnerable populations, lack of quality-of-life trips

SOUTHWEST REGION

Population: 392,112
65+ Population: 78,422 (20.0%)
Residents with Disability: X (21.0%)
Residents in Poverty: 71,000 (18.0%)
Regional Challenges: Topography, interstate trips, lack of funding alternatives

WESTERN REGION

Population: 881,911
65+ Population: 149,925 (17.0%)
Residents with Disability: 119,940 (13.6%)
Residents in Poverty: 129,641 (14.7%)
Regional Challenges: Limited service, connectivity between urban areas

NORTHERN REGION

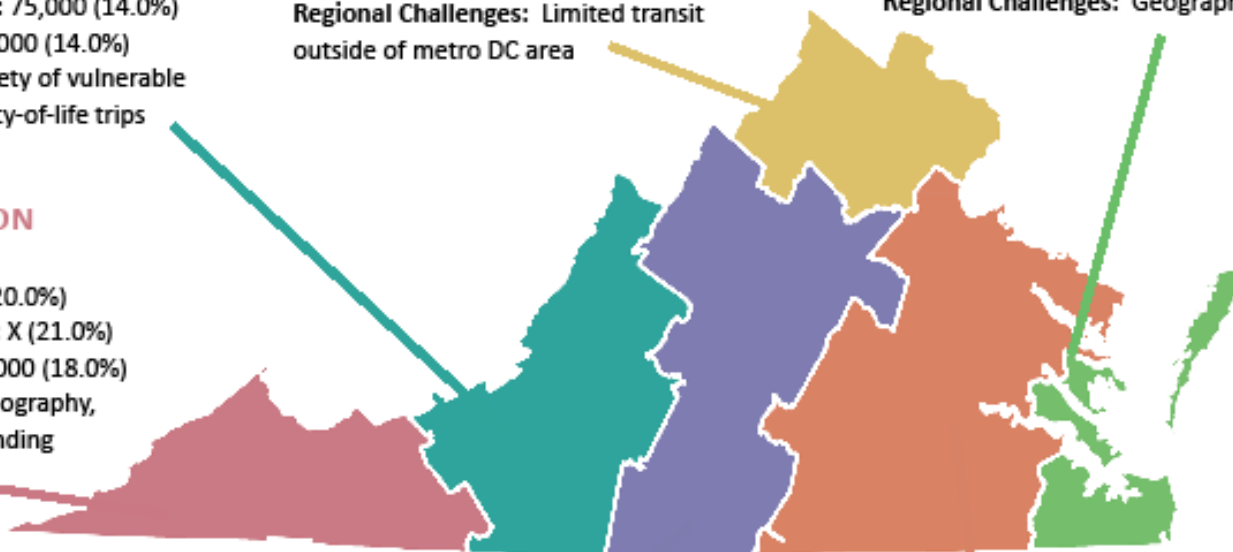
Population: 2.7 million
65+ Population: 302,400 (11.4%)
Residents with Disability: 199,800 (7.4%)
Residents in Poverty: 180,900 (6.7%)
Regional Challenges: Limited transit outside of metro DC area

TIDEWATER REGION

Population: 1.7 million
65+ Population: 225,000 (13.0%)
Residents with Disability: 187,000 (11.0%)
Residents in Poverty: 210,000 (12.0%)
Regional Challenges: Geography

CENTRAL REGION

Population: 1.8 million
65+ Population: 270,000 (15%)
Residents with Disability: 223,200 (12.4%)
Residents in Poverty: 214,200 (11.9%)
Regional Challenges: Trips outside of agency service areas



2019 CHSM Plan

- Recognizes transportation needs of specialized populations and recommends approaches to meetings the needs
 - Seniors (FTA 5310 and Senior Grants)
 - Individuals with disabilities (FTA 5310 Grants)
 - Low-income
 - Veterans (for seniors; see above)
 - Homeless/precariously housed
 - Youth

Statewide Opportunities

- Trip Eligibility; Trips in Demand:
 - Recurring medical
 - Location-specific medical
 - Quality-of-life non-medical
 - Essential non-medical
 - Employment
 - After-hours
 - Multi-stop
 - Long-distance
- Education
- Service Alternatives
- Funding

Major Statewide Recommendations

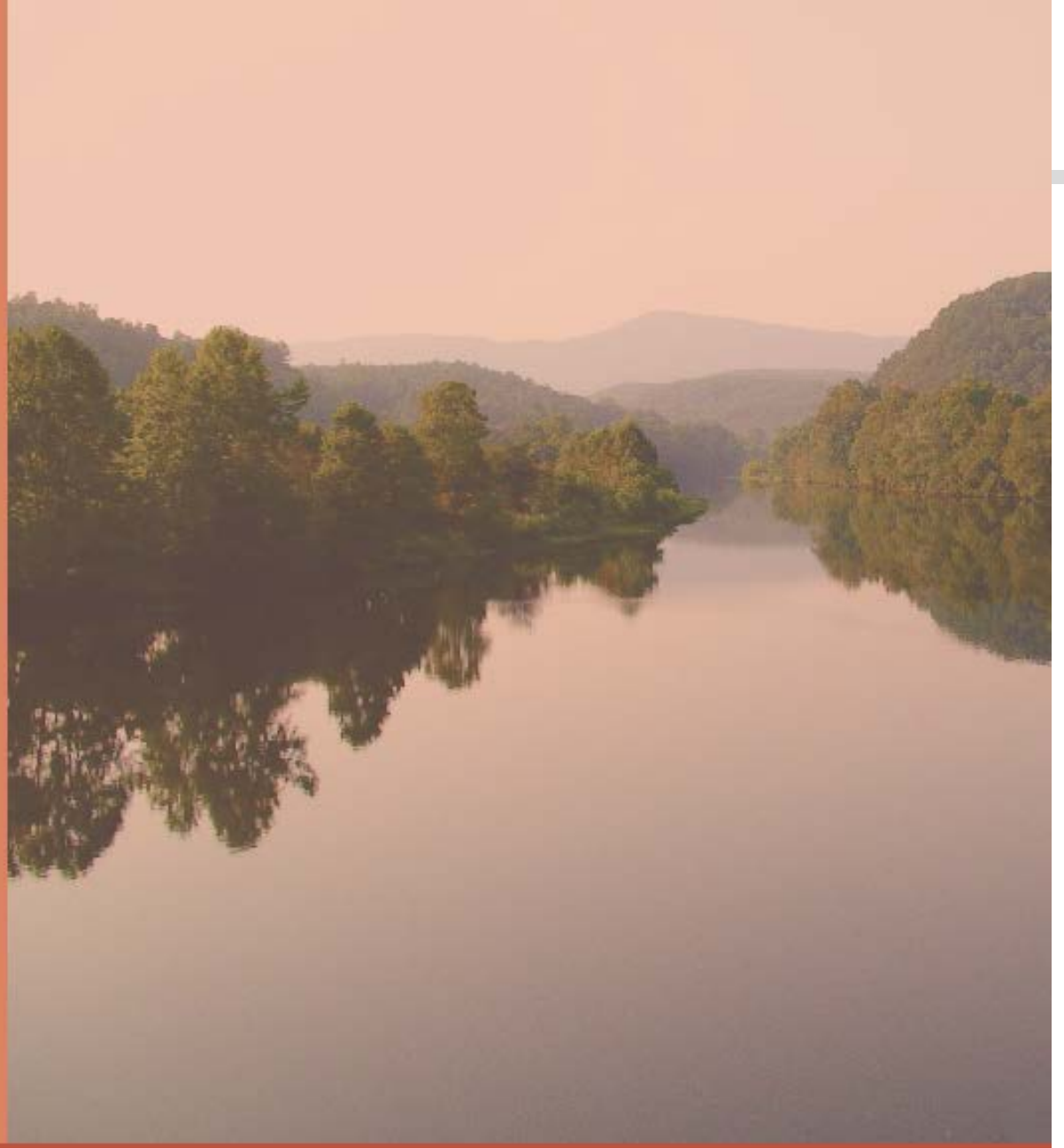
- Develop a Statewide Steering Committee to identify and address issues that affect transportation at a high level
- Develop regional advisory committees that report back to the statewide steering committee
- Explore additional federal opportunities for funding
- Coordinate funding across state and federal programs
- Continue discussions with transportation network companies and other alternative providers
- Group trip types to maximize ridership

VIRGINIA
Coordinated Human
Services Mobility



2019

**Central
Region**



Central Region Actions

- Develop a unified message for rural jurisdiction elected and administrative officials about the ongoing public need for human services transportation
- Ensure drivers are equipped with the proper training and resources to manage and provide aid to their potential passengers and those passengers' health issues and disabilities
- Ramp up grassroots work with senior centers, doctor's offices, living facilities, and other relevant partners or potential partners (Area of focus)
- Focus education and publicity efforts on residential rental offices, community centers, and other public areas
- Work with local jurisdictions to include human services transportation into local transportation planning (Regional strength)
- Work with hospitals, medical centers, and other health care facilities to catalog existing transportation programs for recurring medical trips; see how trips serving these facilities, if possible, can be shifted to other programs
- Explore local funding to support trips for seniors, individuals with disabilities, and other vulnerable or special populations

Questions?

Brittany Voll, Transit Program Manager

brittany.voll@drpt.Virginia.gov

804-786-4637