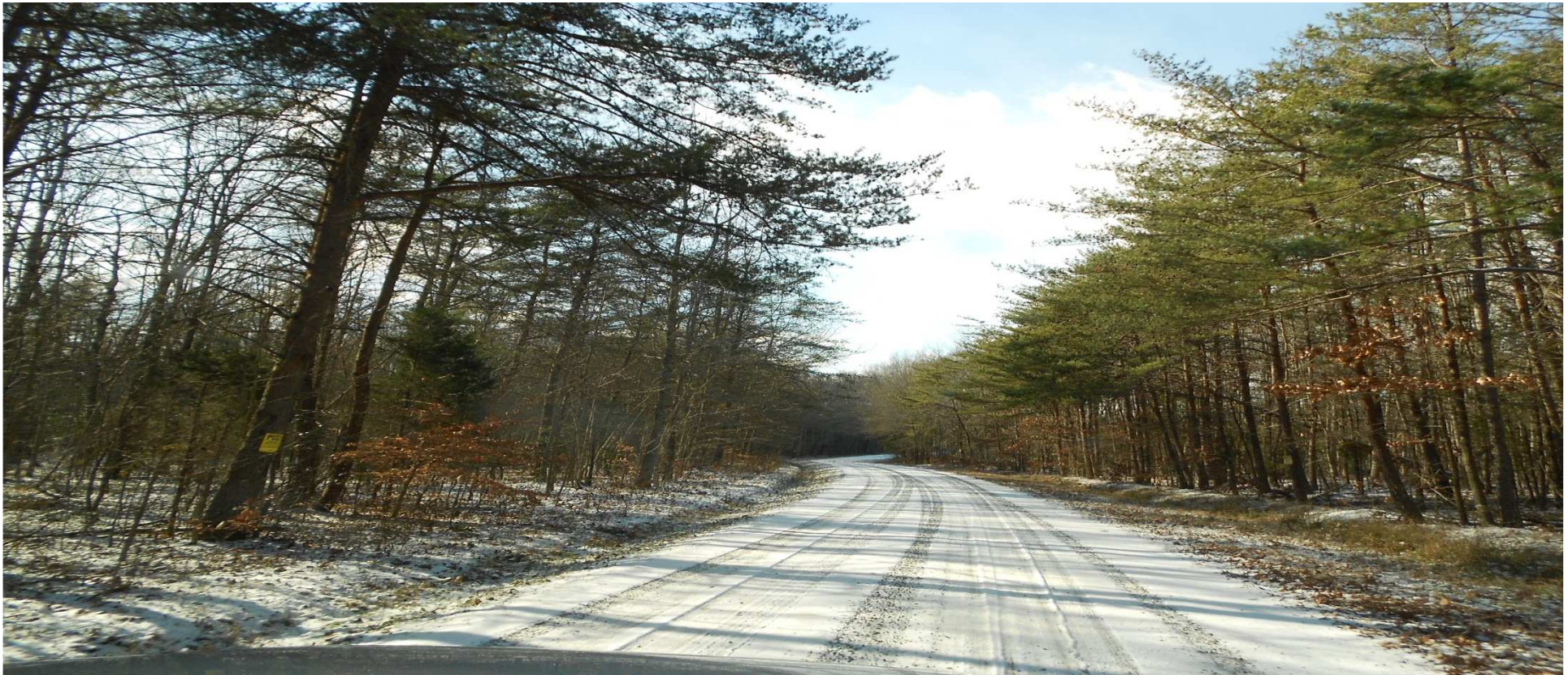
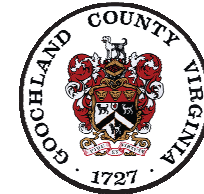


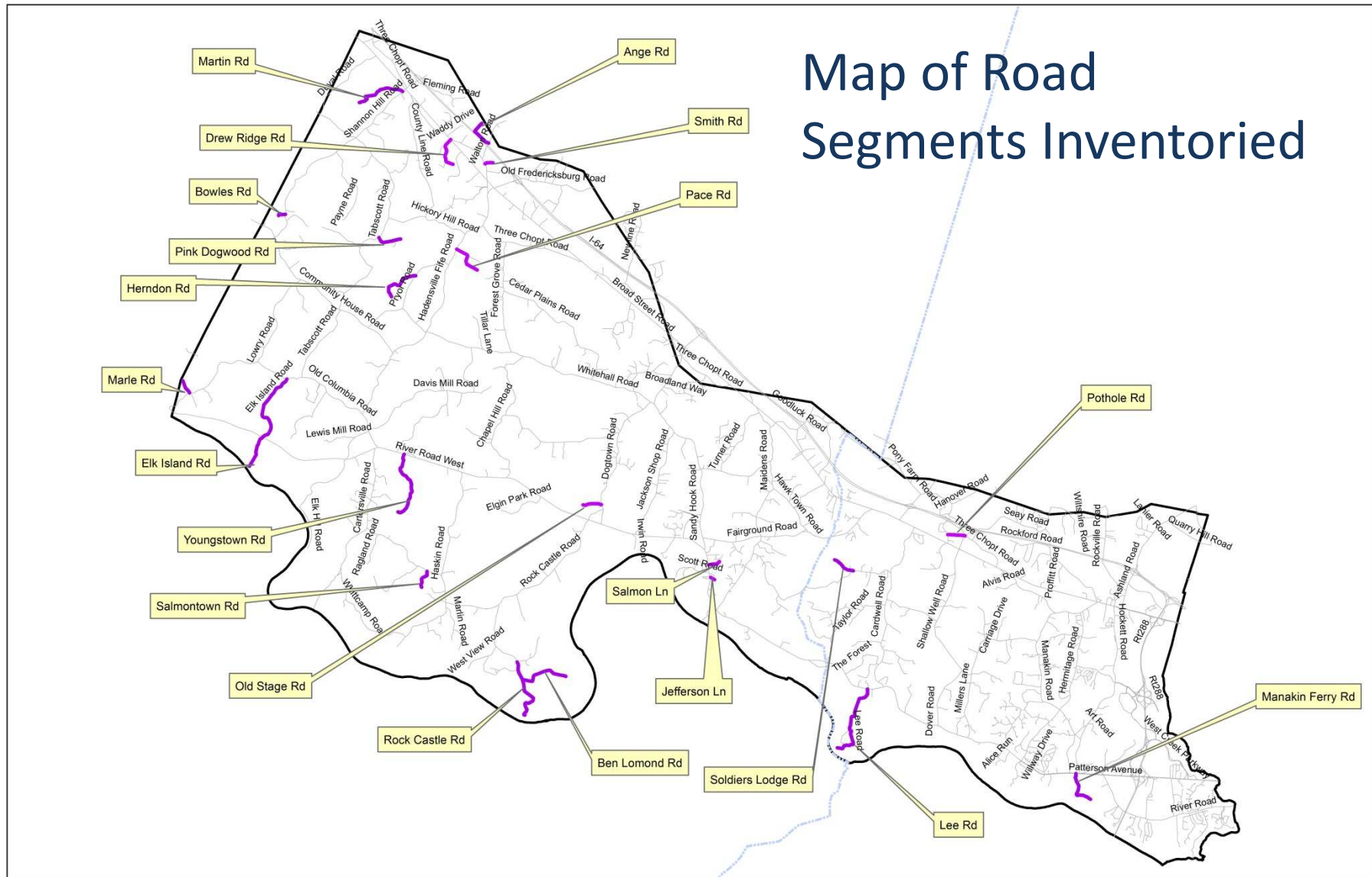
GOOCHLAND COUNTY RURAL ROAD INVENTORY RRPDC April 2013

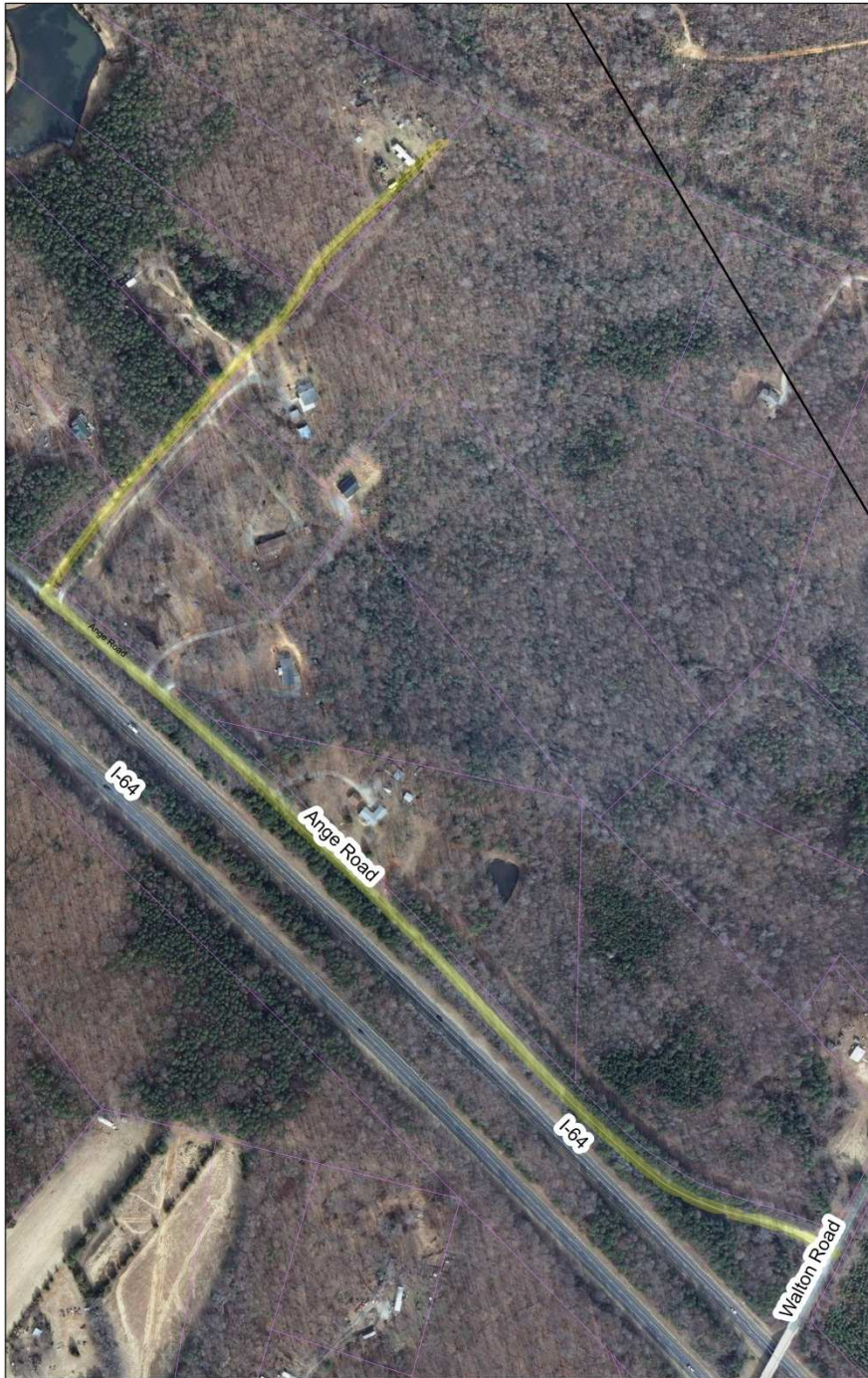


Database for Each Roadway

- Identify:
 - Number of parcels to be served
 - Number of homes to be served
 - Total cost estimate
 - Development potential
 - Impediment for Emergency Access (VDoT/Dom Va Power)
 - Benefit to County facility
 - Length of time road has existed
 - Number of School Children
- Require public participation/consensus

Map of Road Segments Inventoried





Ange Road

- 0.8 miles
- Gravel, good condition
- 22' wide (variable)
- No major landmarks or obstructions

- # entranceways: 8
- Parcels 5 (+7)
- Homes 3 (+6)
- Cost estimate \$???
- Development potential Yes
- Emergency Access Good
- County facility None
- Age of Road ???
- School children TBD

Ange Road





Lee Road

- 2.3 miles
- Paved until Pleasant Green Lane; then gravel, good condition
- 14.5' wide (variable)
- Narrow road, steep in parts, trees close to the road

- | | |
|-------------------------|-------|
| • Parcels | 10 |
| • Homes | 8 |
| • Cost estimate | \$??? |
| • Development potential | None |
| • Emergency Access | Fair |
| • County facility | None |
| • Age of Road | ??? |
| • School children | TBD |



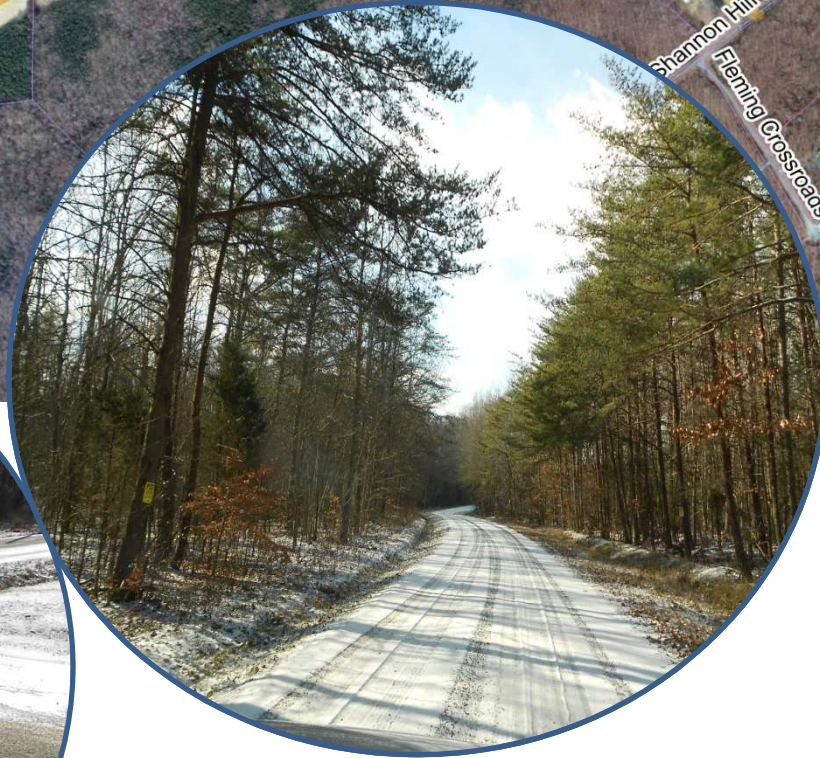
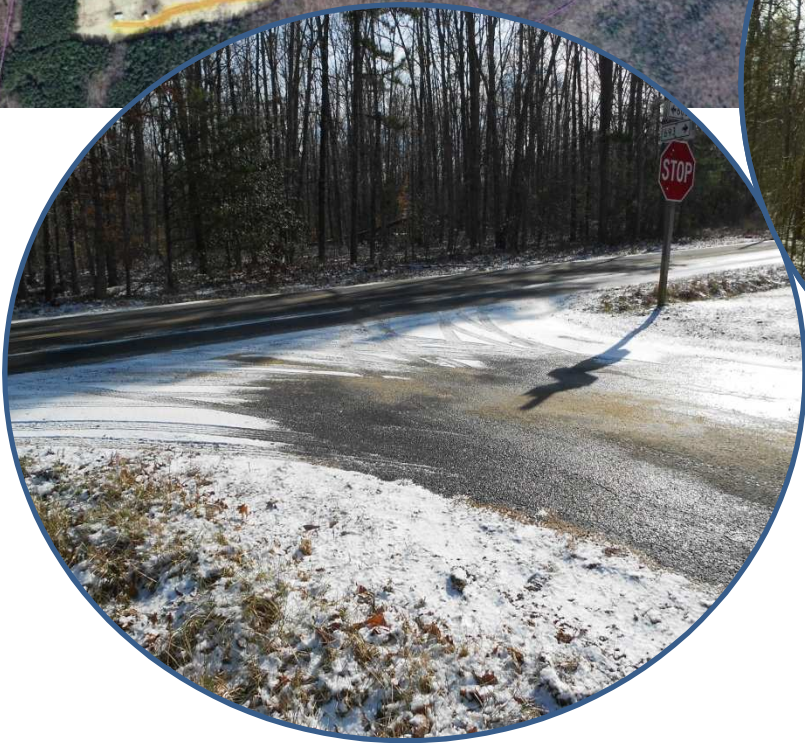
Lee Road





Martin Road

- 1.5 miles
- Gravel, good condition
- 14.5' wide variable
- No major landmarks or obstructions
- Parcels 4
- Homes 2
- Cost estimate \$???
- Development potential Yes
- Emergency Access Good
- County facility None
- Age of Road ???
- School children TBD



Martin Road



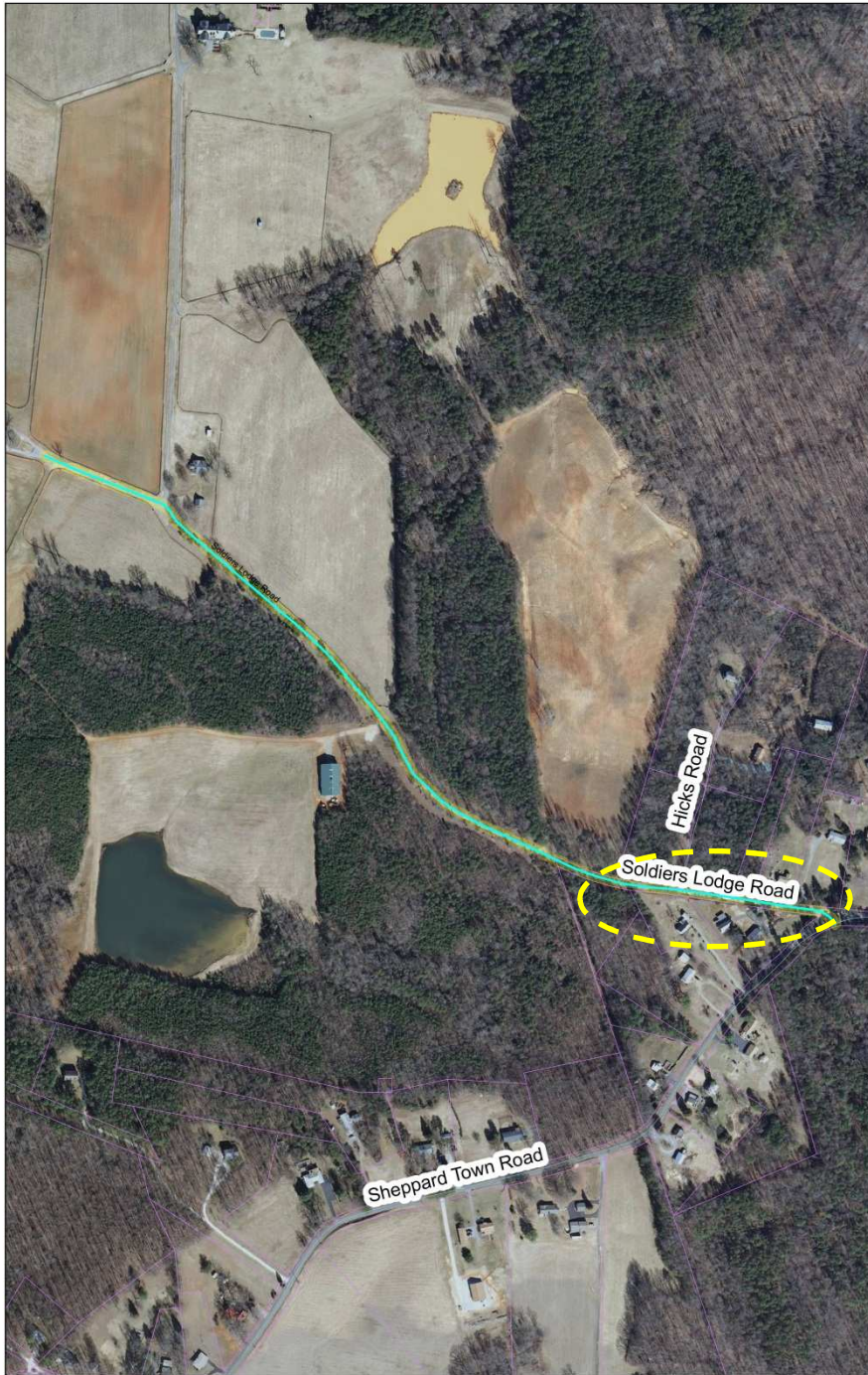
Manakin Ferry Road

- 1.06 miles
- Asphalt, poor; then gravel, fair
- 18' wide (variable)
- Steep: may cause difficulties for emergency vehicles in inclement weather
- # entranceways: 3
- Parcels
- Homes
- Cost estimate \$???
- Development potential
- Emergency Access
- County facility
- Age of Road
- School children



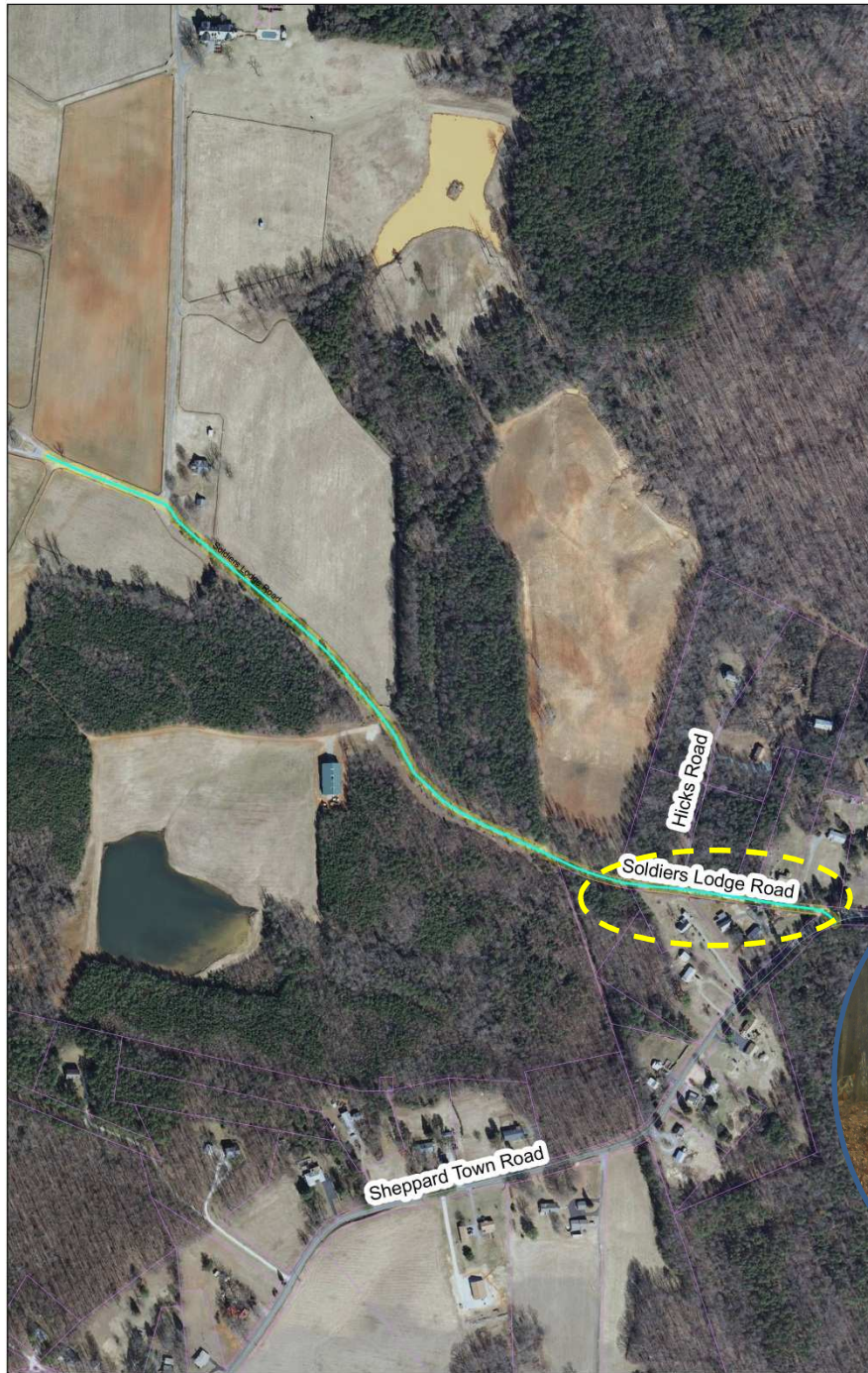
Manakin Ferry Road





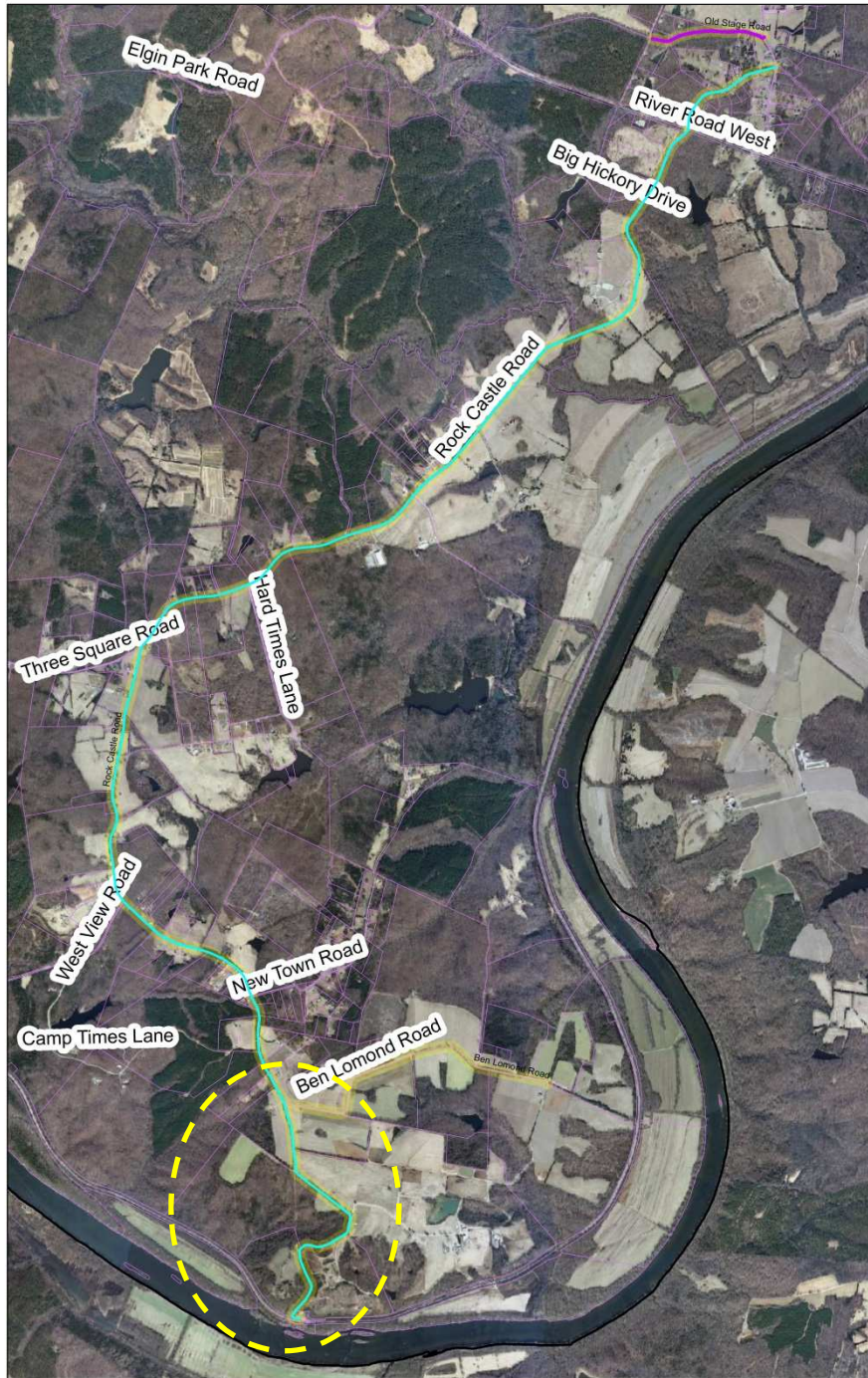
Soldiers Lodge Road

- 0.2 miles (starts from Sheppard Town Rd)
 - Gravel, fair condition
 - Rest of the road is private and paved
 - 15' wide
 - Narrow road, trees close to the road
-
- # entranceways: 3
 - Parcels
 - Homes
 - Cost estimate \$???
 - Development potential
 - Emergency Access
 - County facility
 - Age of Road
 - School children



Soldiers Lodge Road



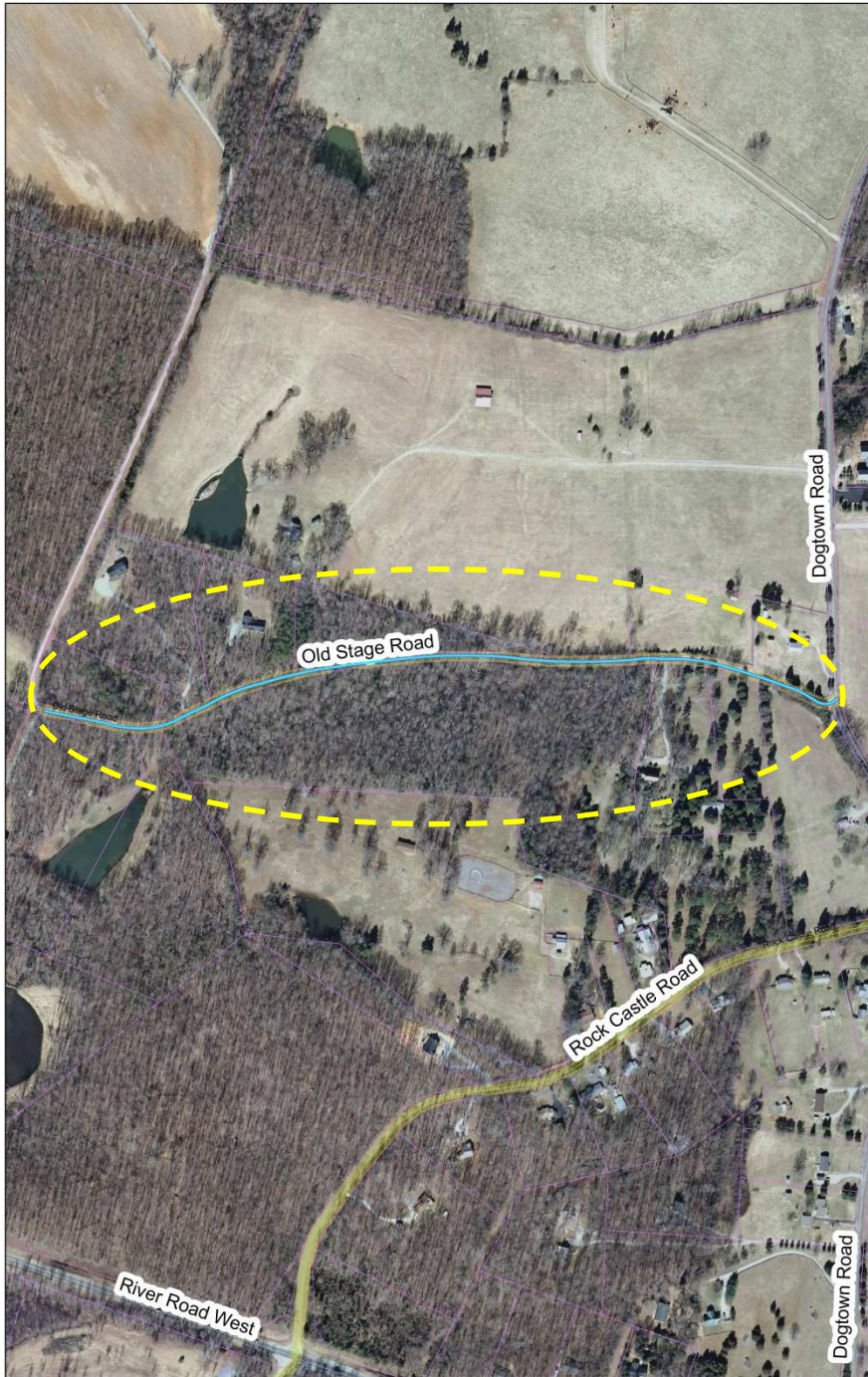


Rock Castle Road

- 1 mile (south of Ben Lomond Rd)
 - 19' wide
 - Gravel, rough but no potholes
 - Some sharp turns and trees close to the road. Road gets steep toward river.
-
- # entranceways: 1 (south of Ben Lomond)
 - Parcels
 - Homes
 - Cost estimate \$???
 - Development potential
 - Emergency Access
 - County facility
 - Age of Road
 - School children

Rock Castle Road



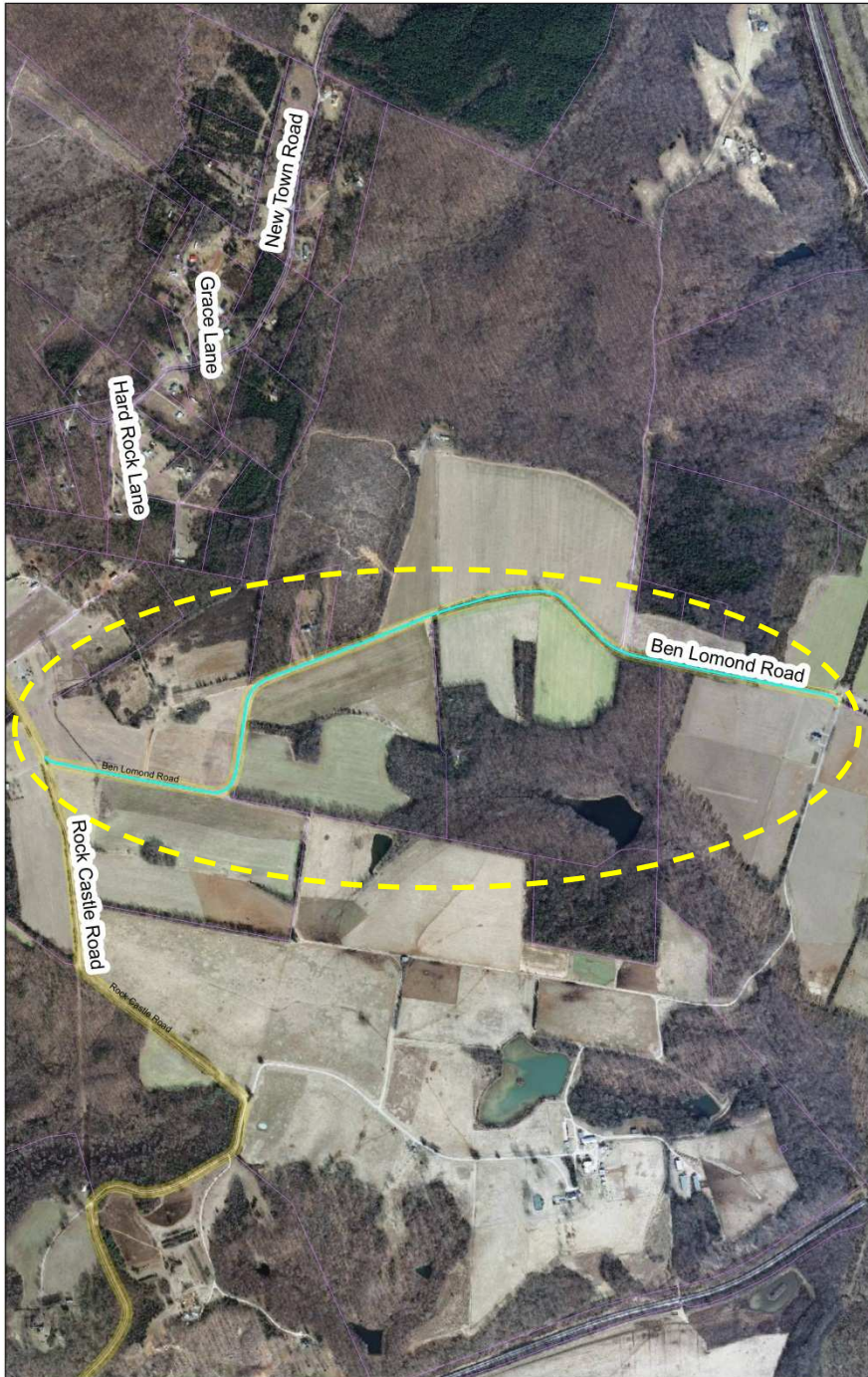


Old Stage Road

- 0.5 miles
 - Gravel, good. Some small potholes
 - 15' wide
 - Generally nice, wide gravel road
-
- # entranceways: 3
 - Parcels
 - Homes
 - Cost estimate \$???
 - Development potential
 - Emergency Access
 - County facility
 - Age of Road
 - School children

Old Stage Road





Ben Lomond Road

- 1.4 miles
 - Gravel, good. Rough but no potholes
 - 15'5" wide
 - One tree close to the road (see photo)
-
- # entranceways: 5
 - Parcels
 - Homes
 - Cost estimate \$???
 - Development potential
 - Emergency Access
 - County facility
 - Age of Road
 - School children

Ben Lomond Road



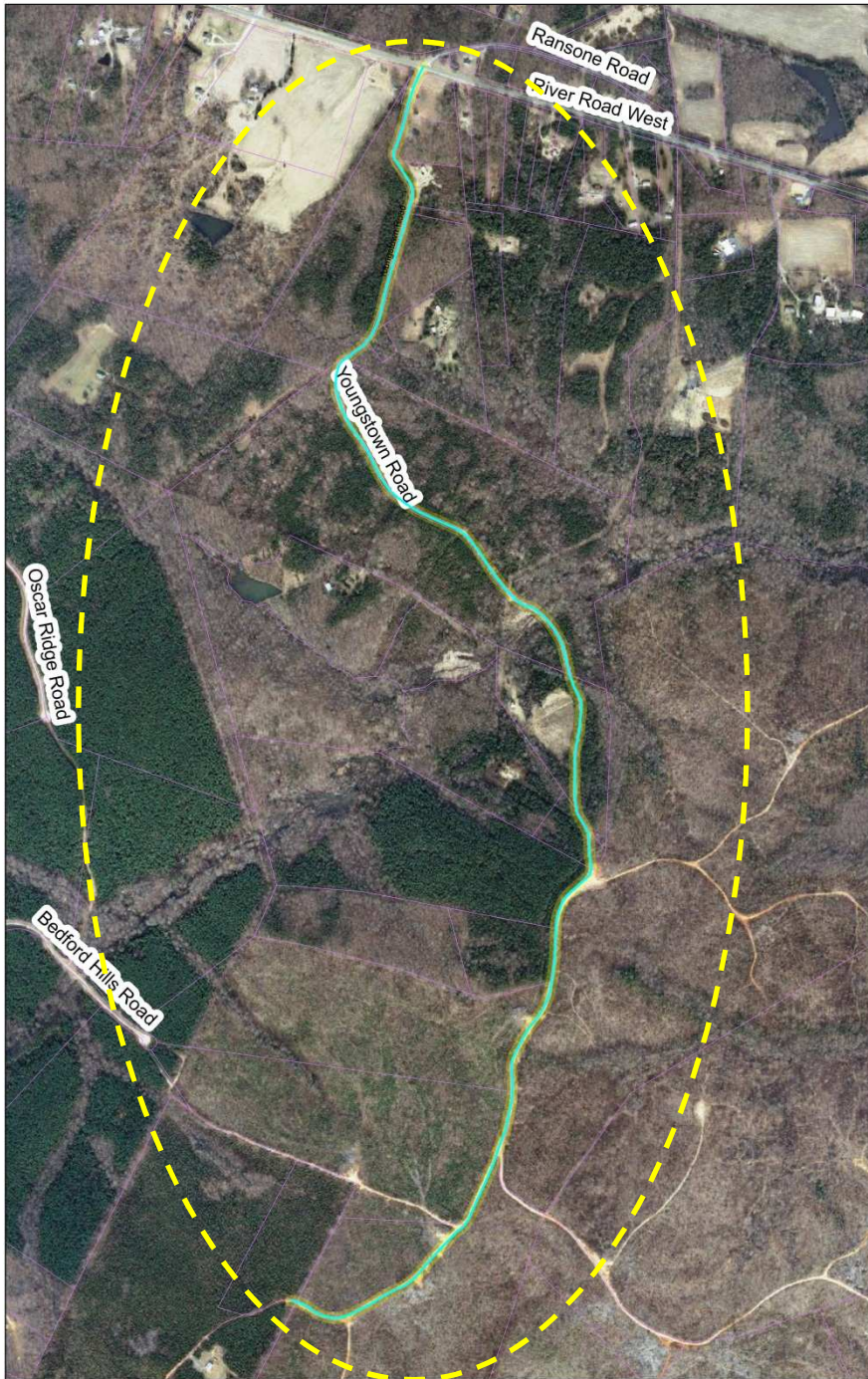


Bowles Road

- 0.2 miles
- Gravel, OK. Rough but no potholes
- 20' wide
- Road narrows toward cul-de-sac at the end
- # entranceways: 1
- Parcels
- Homes
- Cost estimate \$???
- Development potential
- Emergency Access
- County facility
- Age of Road
- School children

Bowles Road

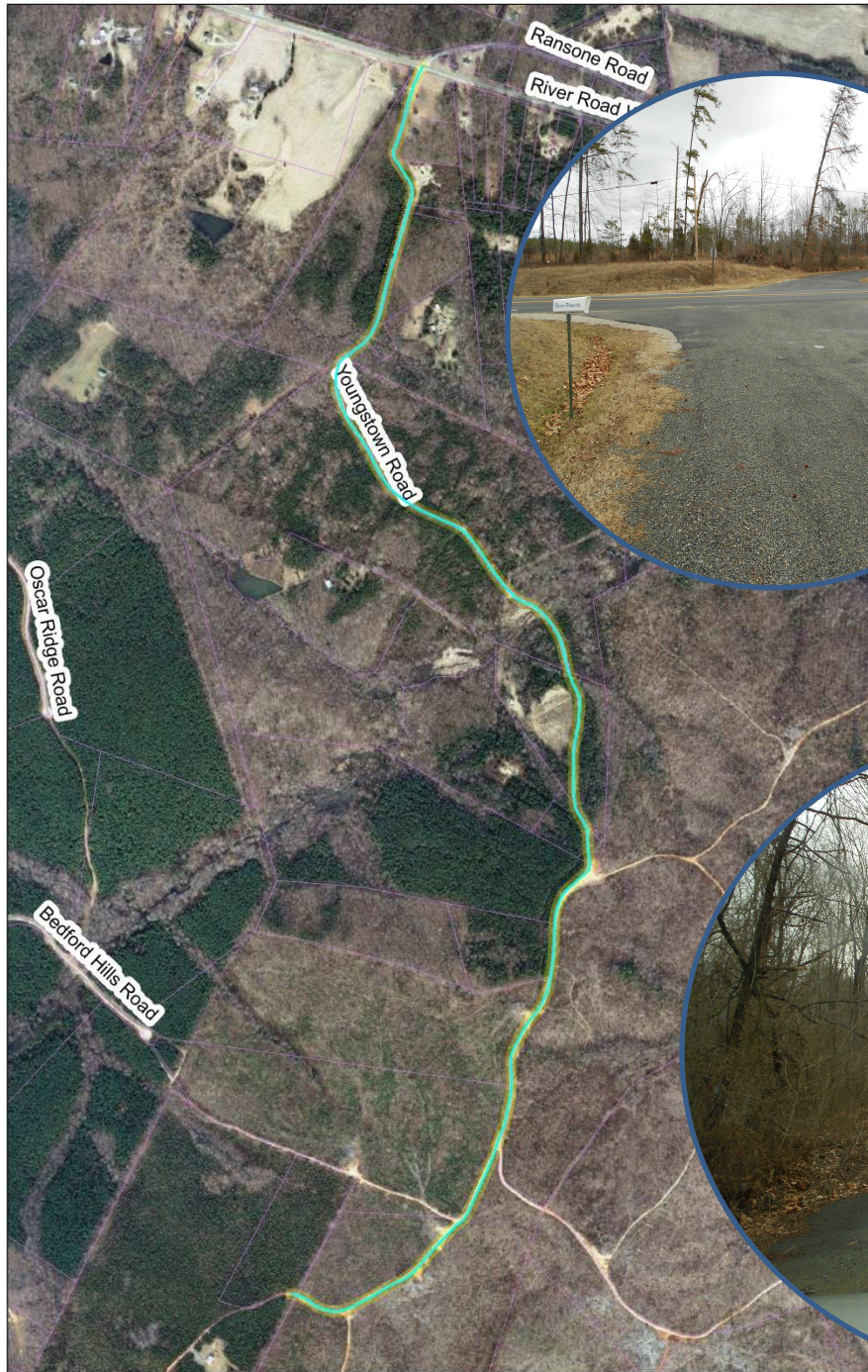


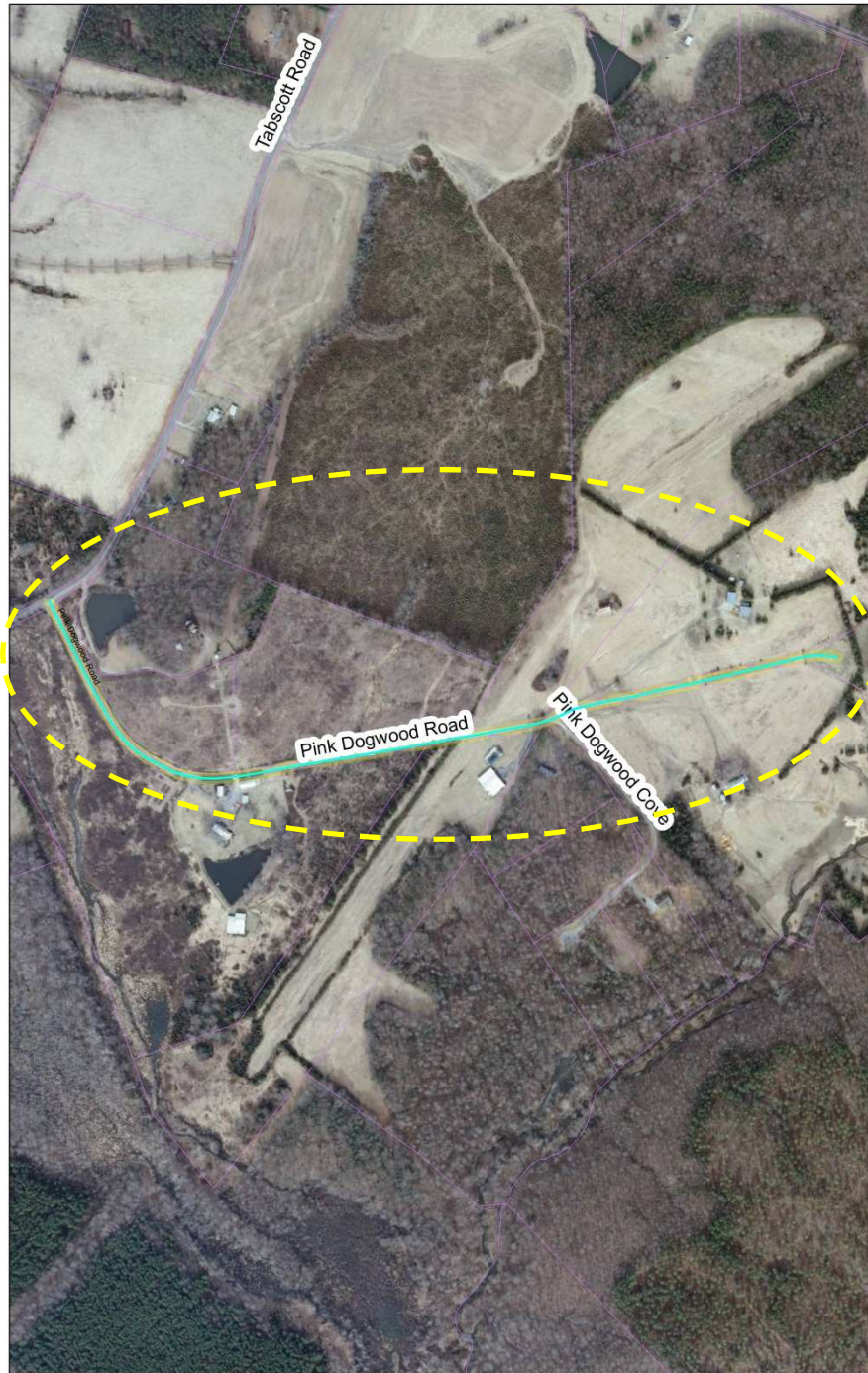


Youngstown Road

- 2 miles
- Gravel, good condition. some places in fair or poor condition
- 21' wide
- # entranceways: 5
- Parcels
- Homes
- Cost estimate \$???
- Development potential
- Emergency Access
- County facility
- Age of Road
- School children

Youngstown Road





Pink Dogwood Road

- 0.7 miles
- Gravel, good condition, a few potholes and ruts
- 16' wide
- # entranceways: 3
- Parcels
- Homes
- Cost estimate \$???
- Development potential
- Emergency Access
- County facility
- Age of Road
- School children

Pink Dogwood Road



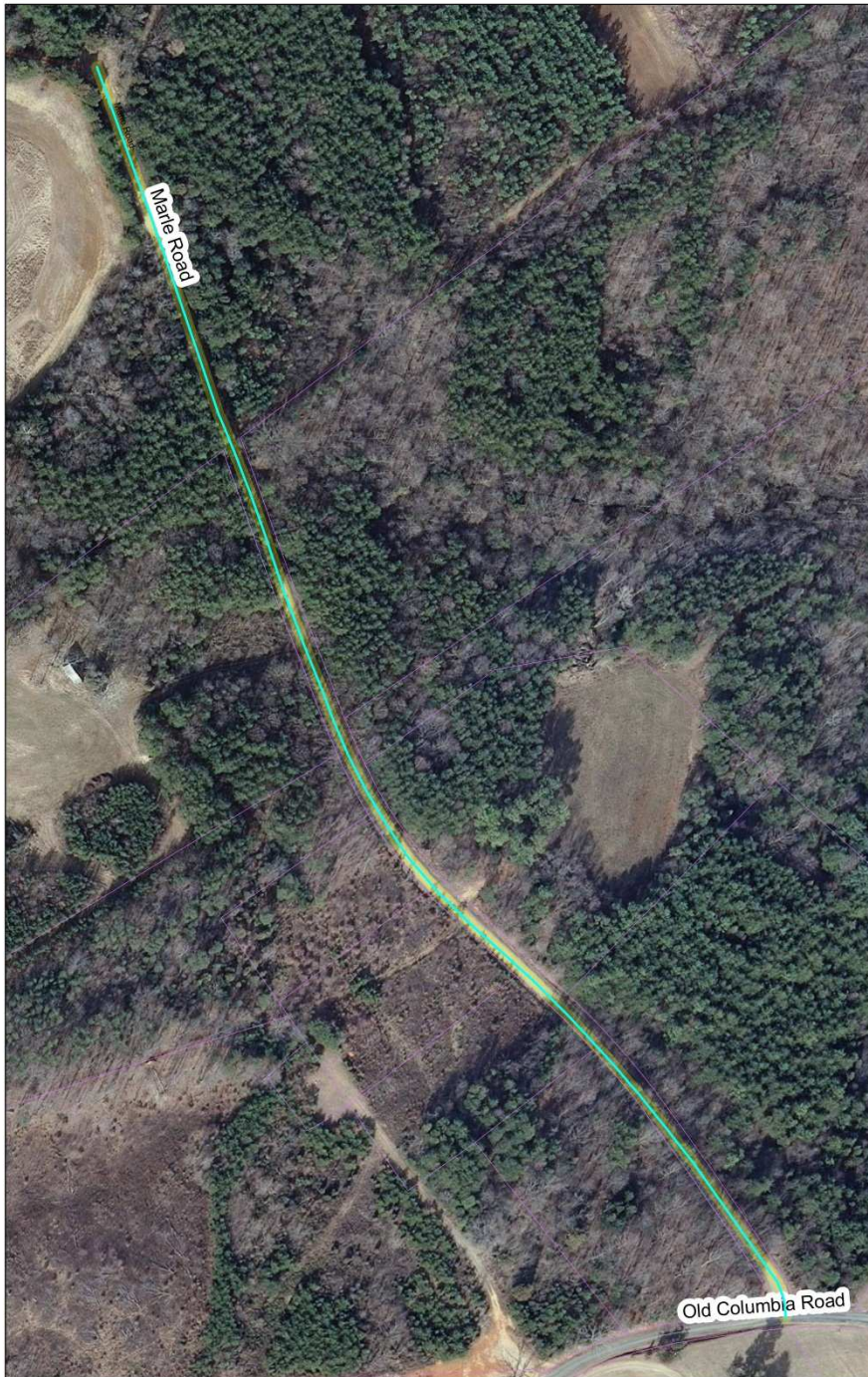


Salmontown Road

- 0.5 miles
- Asphalt, fair to poor condition
- 17' wide
- # entranceways: 11
- Parcels
- Homes
- Cost estimate \$???
- Development potential
- Emergency Access
- County facility
- Age of Road
- School children

Salmontown Road





Marle Road

- 0.3 miles
- Gravel, good condition
- 12' wide
- # entranceways: 0
- Parcels
- Homes
- Cost estimate \$???
- Development potential
- Emergency Access
- County facility
- Age of Road
- School children

Marle Road

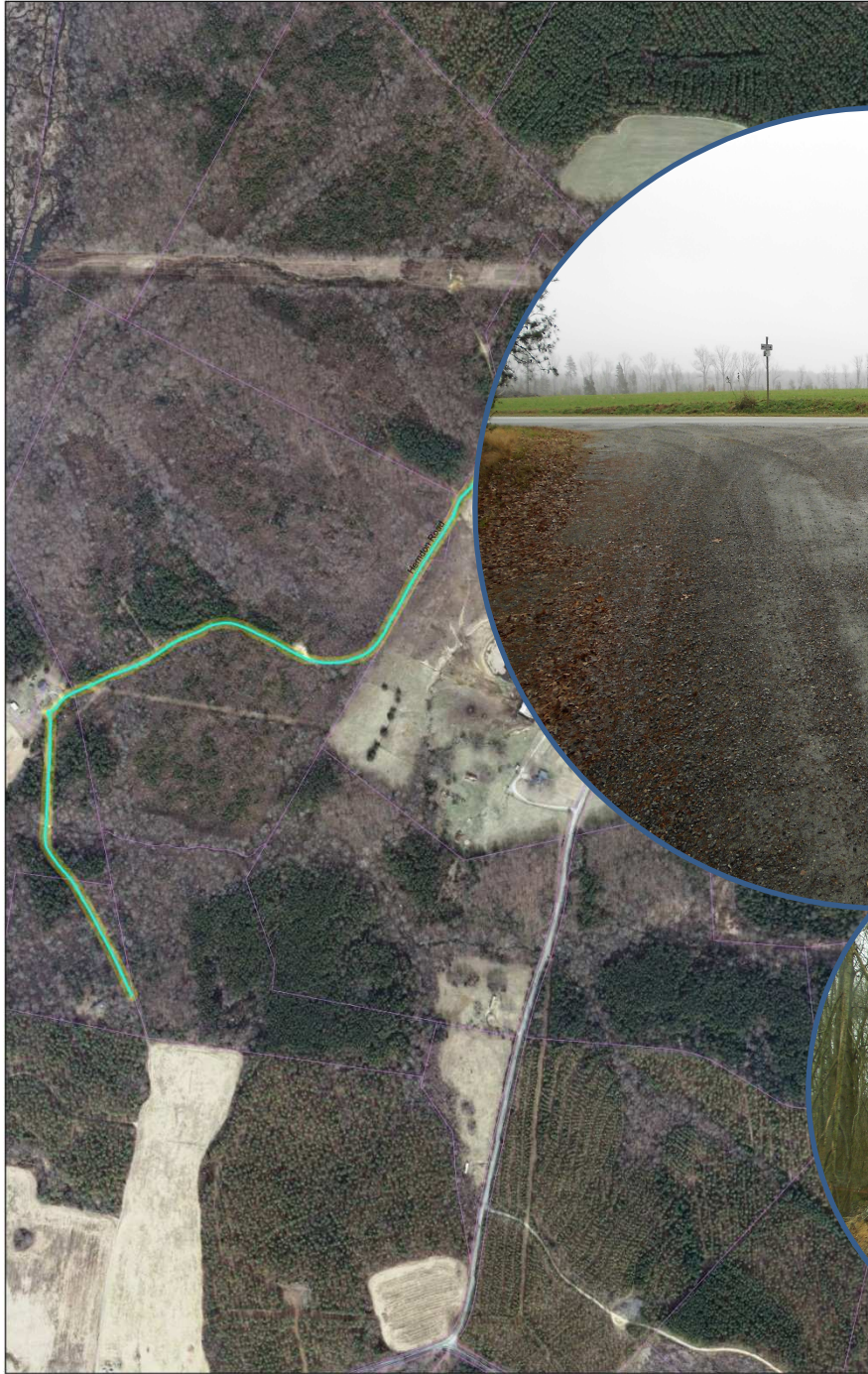


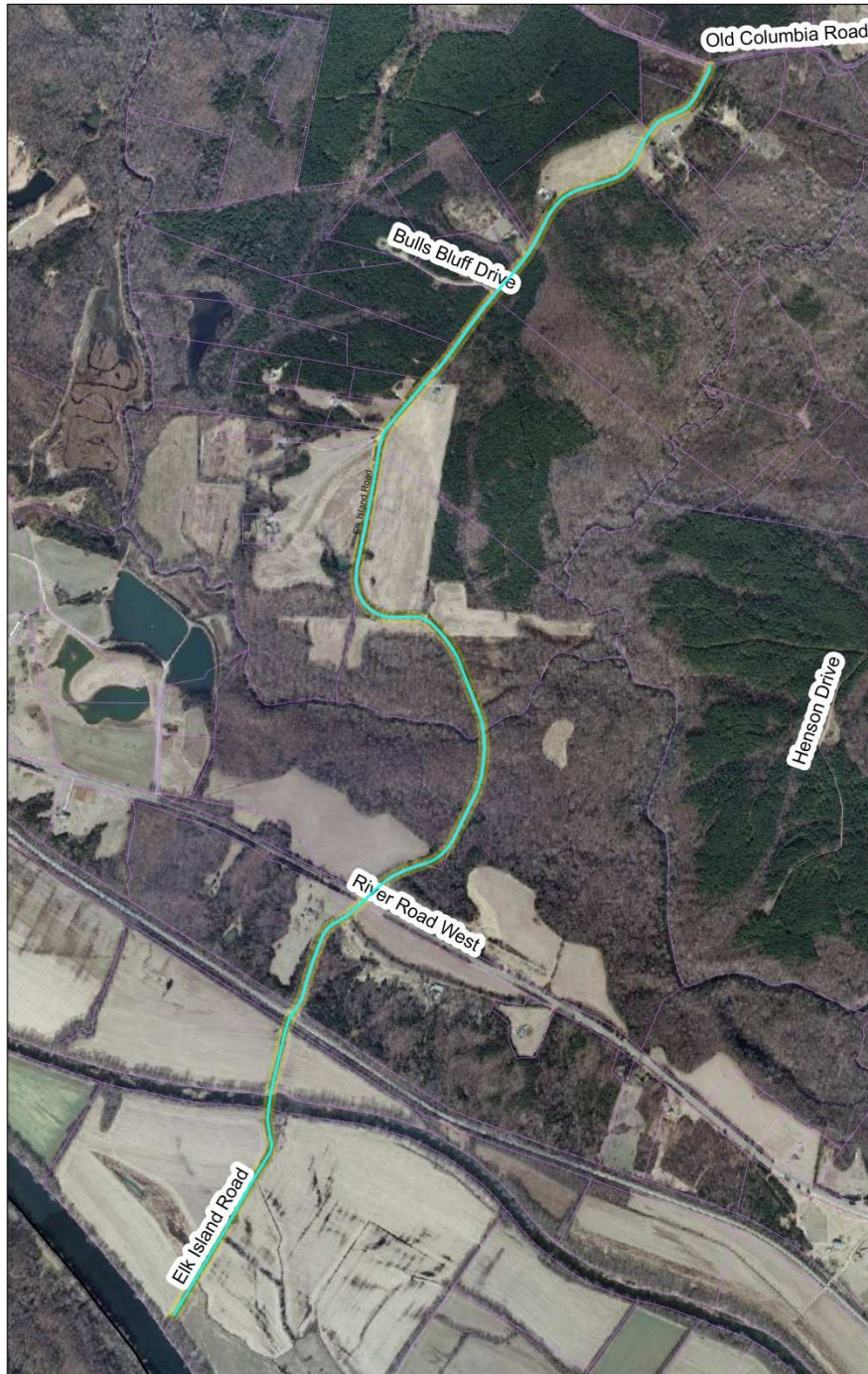


Herndon Road

- 1.2 miles
- Gravel, good condition
- 17' wide
- # entranceways: 2
- Parcels
- Homes
- Cost estimate \$???
- Development potential
- Emergency Access
- County facility
- Age of Road
- School children

Herndon Road



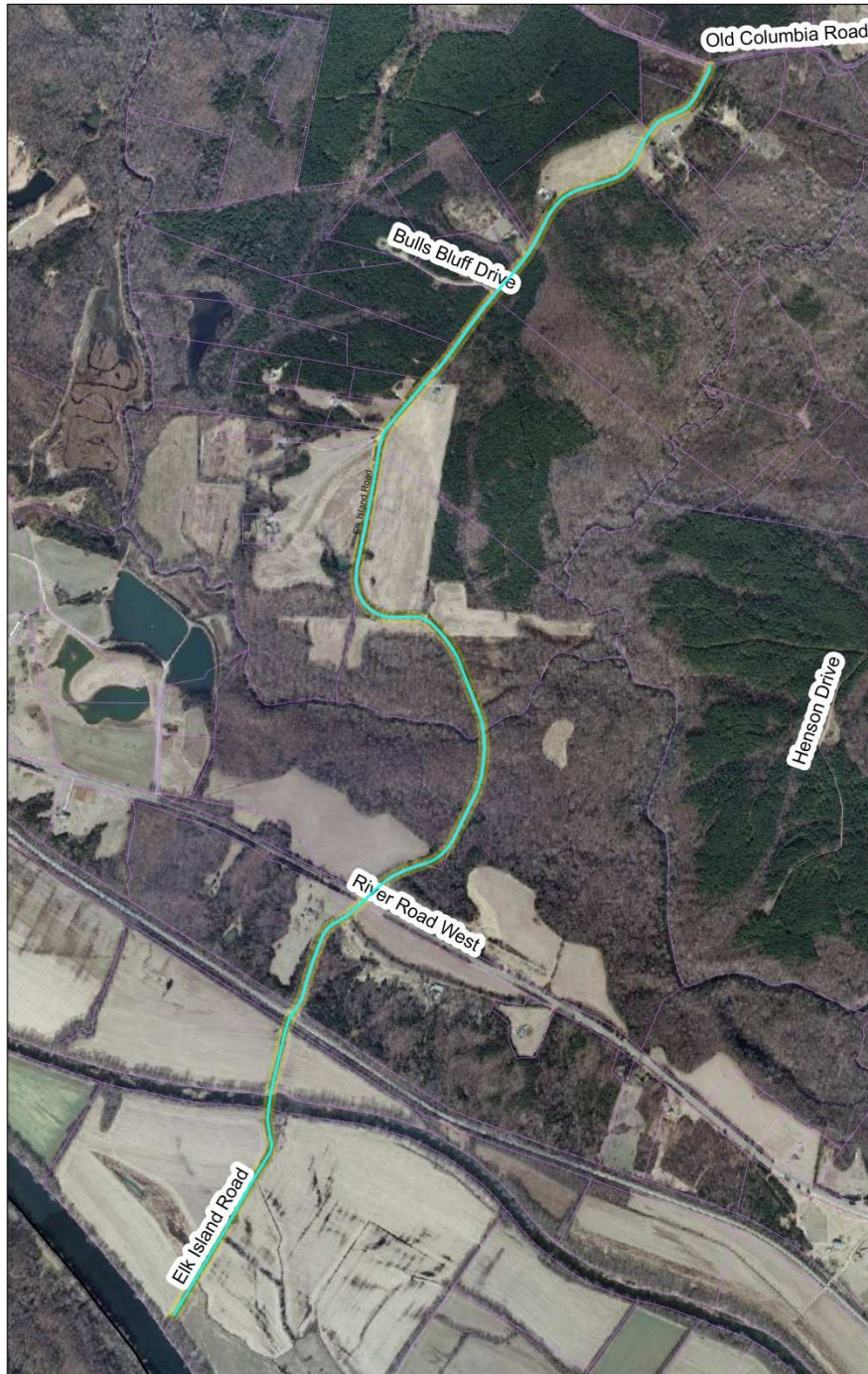


Elk Island Road

- 0.9 miles
- Narrow asphalt first 200' (fair condition, irregular width), then gravel, okay condition
- 13' wide at beginning, 14'5" at bridge
- # entranceways: 1
- Parcels
- Homes
- Cost estimate \$???
- Development potential
- Emergency Access
- County facility
- Age of Road
- School children

Elk Island Road





Pothole Road

- 0.5 miles
- Bad condition. Full of potholes.
- 9'6" wide

- # entranceways: 7
- Parcels
- Homes
- Cost estimate \$???
- Development potential
- Emergency Access
- County facility
- Age of Road
- School children

Pothole Road



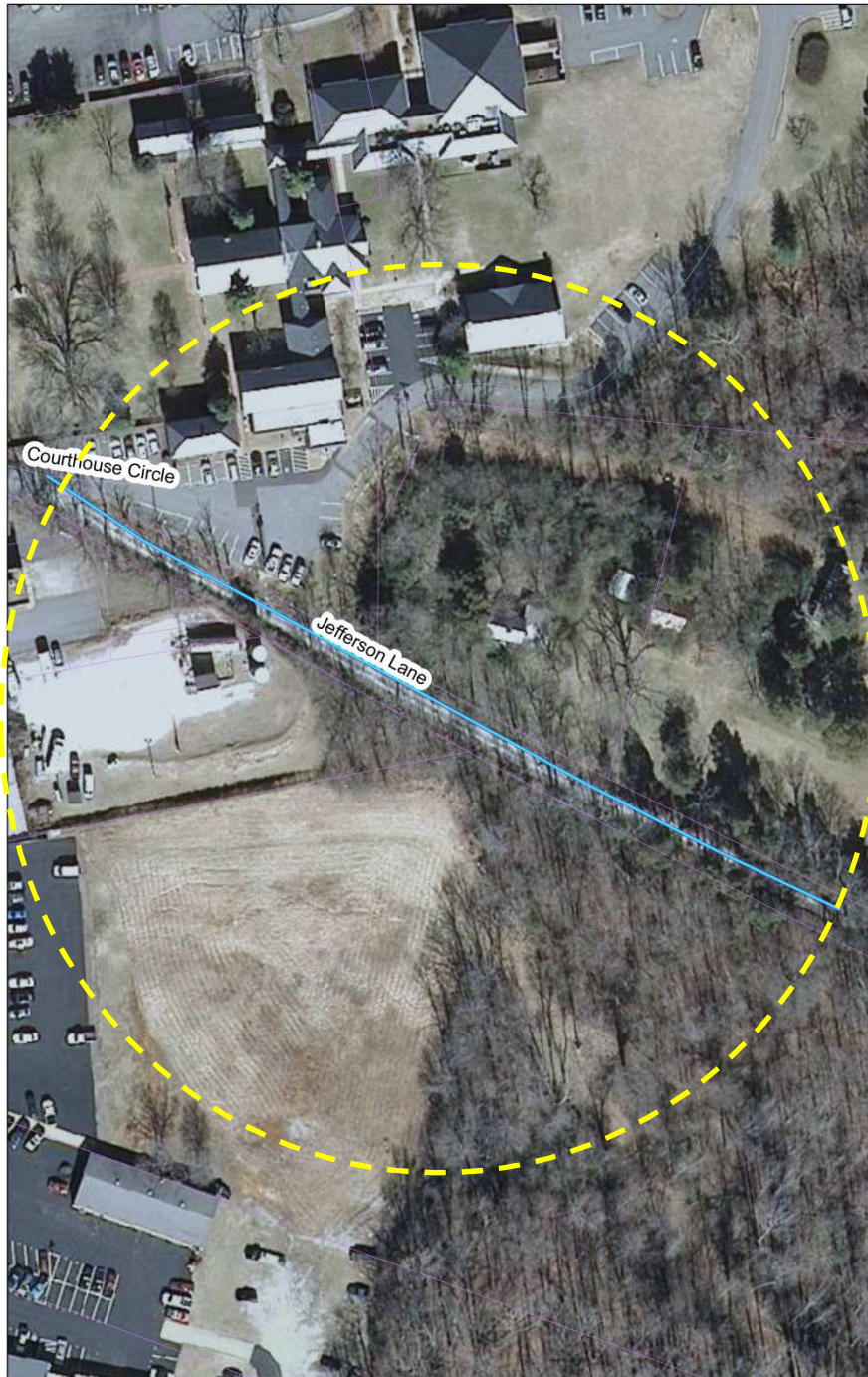


Salmon Lane

- 0.35 miles
- Asphalt, good condition.
- 9' wide
- # entranceways: 7
- Parcels
- Homes
- Cost estimate \$???
- Development potential
- Emergency Access
- County facility
- Age of Road
- School children

Salmon Lane





Jefferson Lane

- 0.12 miles
 - Gravel, fair condition
 - 8'6" wide
 - About 100 yards from beginning of road, there is new gravel
-
- # entranceways: 1
 - Parcels
 - Homes
 - Cost estimate \$???
 - Development potential
 - Emergency Access
 - County facility
 - Age of Road
 - School children

Jefferson Lane





Drew Ridge Road

- 0.9 miles
- Gravel, fair to poor condition
- 13' wide
- Beginning is full of potholes. Hard driving. By the end it's mud/clay, not gravel. Cul-de-sac at end.
- # entranceways: 18
- Parcels
- Homes
- Cost estimate \$???
- Development potential
- Emergency Access
- County facility
- Age of Road
- School children

Drew Ridge Road

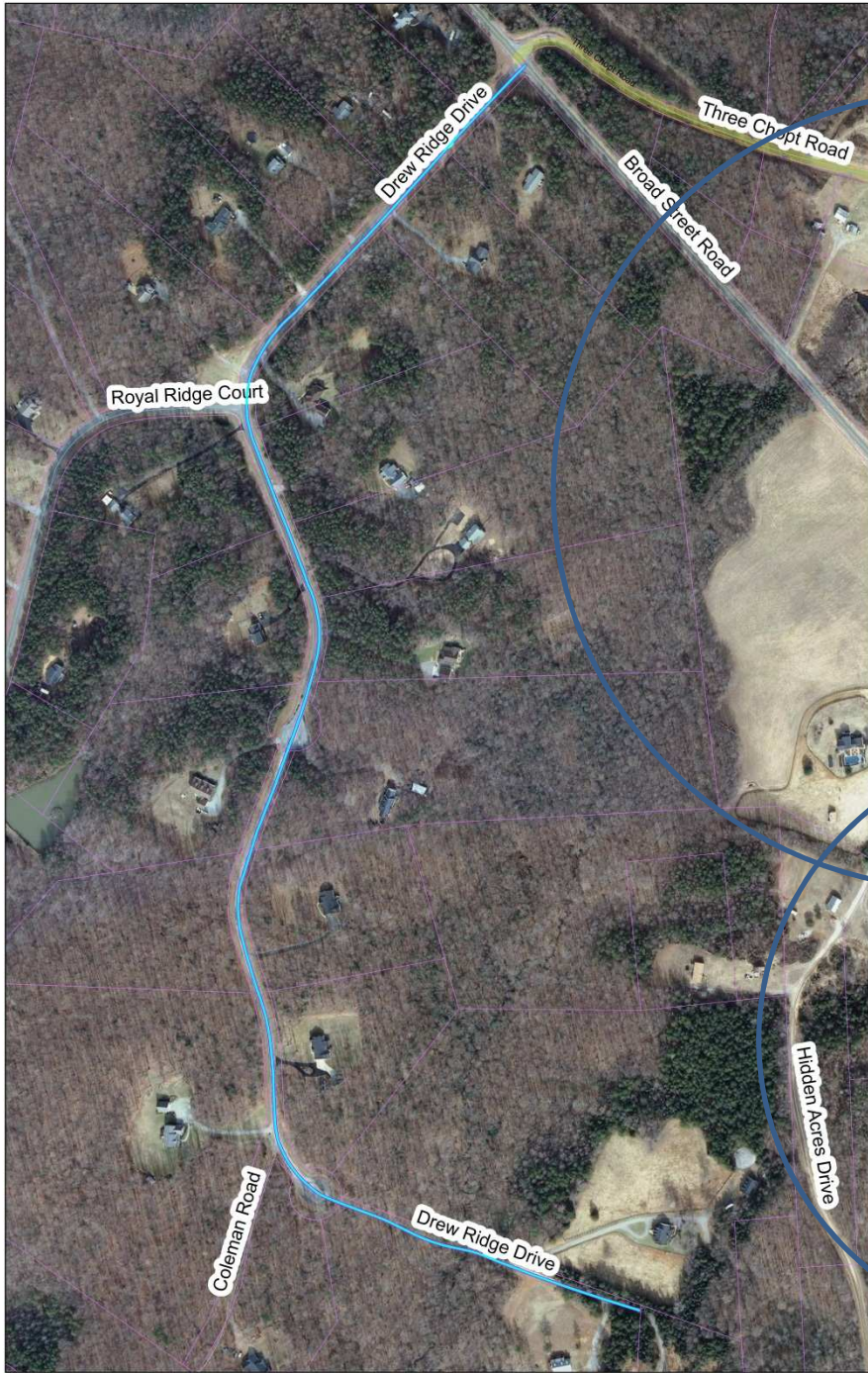




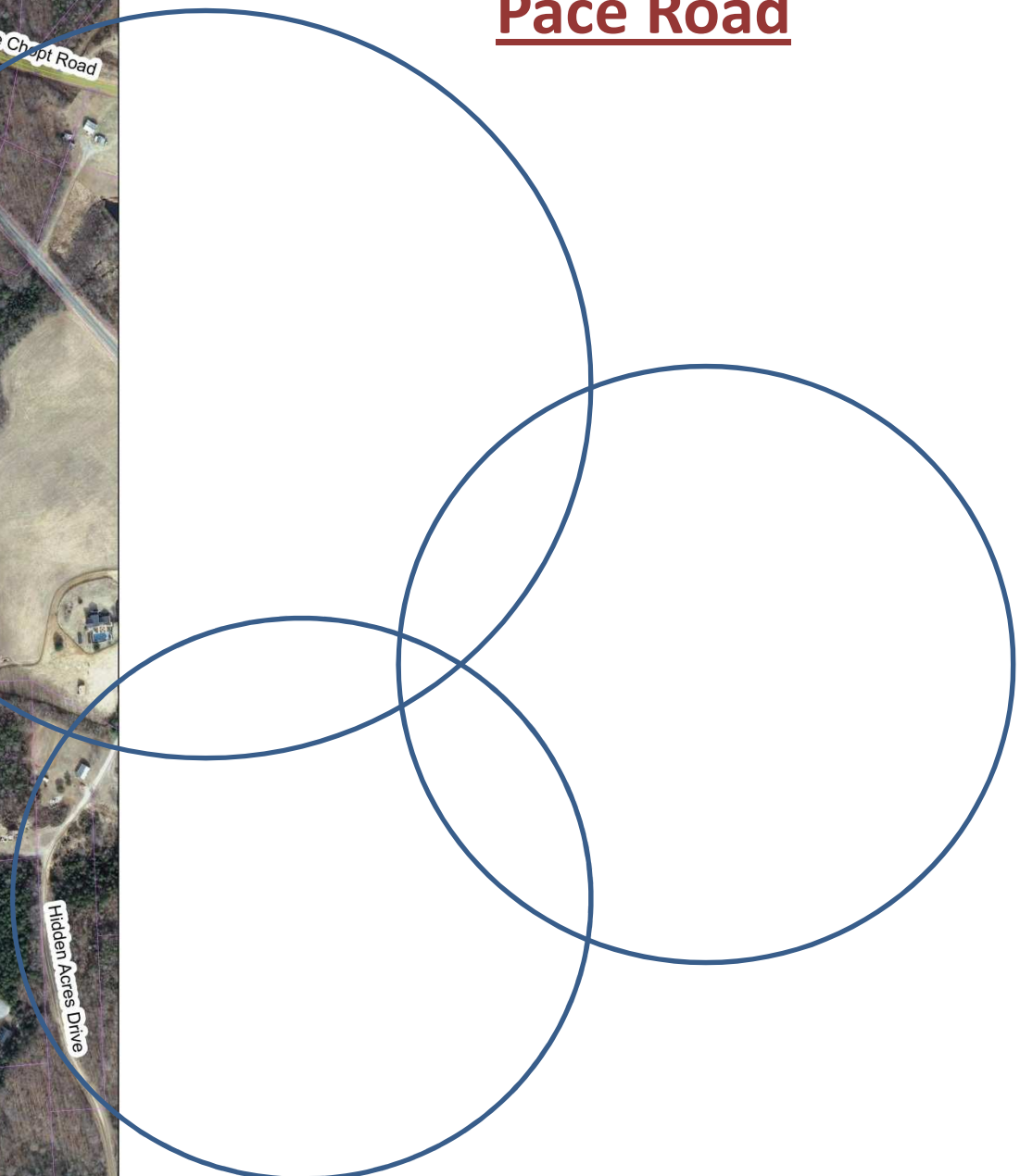
Pace Road

- 0.95 miles
- This road is paved. Good condition in beginning, then fair.
- 23' wide

- # entranceways: 10
- Parcels
- Homes
- Cost estimate \$???
- Development potential
- Emergency Access
- County facility
- Age of Road
- School children



Pace Road





Smith Road

- 0.23 miles
- Poor condition. Gravel is gone, road is mud, mostly potholes and ruts. Rough driving.
- 10'3" wide
- Road looks like it may flood sometimes (see photo).

- # entranceways: 3
- Parcels
- Homes
- Cost estimate \$???
- Development potential
- Emergency Access
- County facility
- Age of Road
- School children

Smith Road

