



# The Central Virginia Transportation Authority

---

IDENTIFYING AND FUNDING STRATEGIC TRANSPORTATION  
OPPORTUNITIES IN VIRGINIA

● NOVEMBER 18, 2021 COMMUNITY TRANSPORTATION ADVISORY COMMITTEE





# THE CENTRAL VIRGINIA TRANSPORTATION AUTHORITY

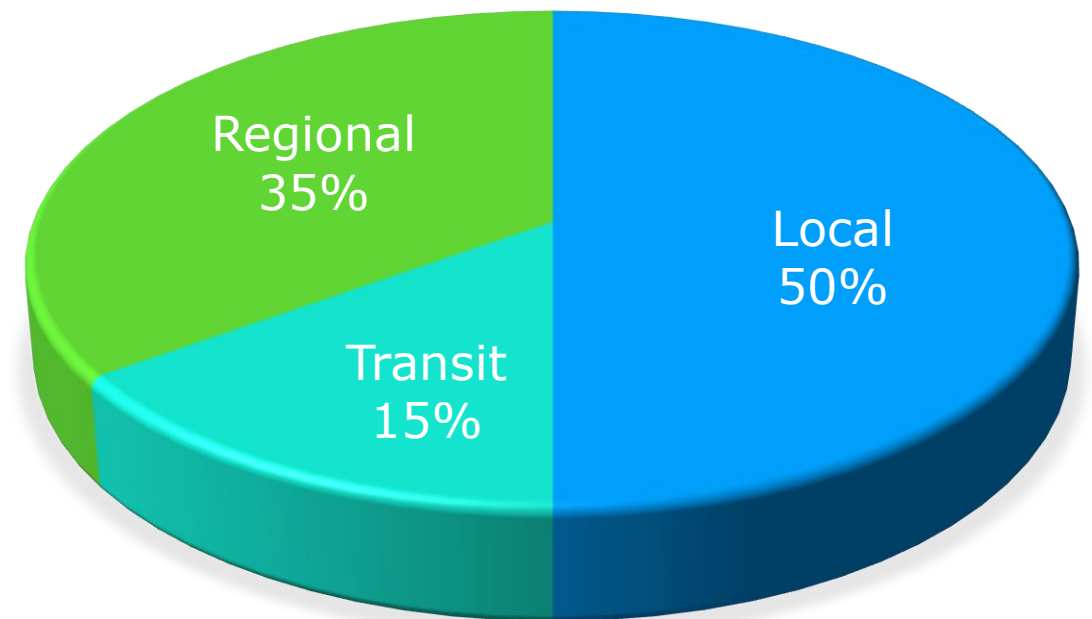
- Organized in August 2020
- Nine Jurisdictions in Central Virginia plus DRPT, VDOT, CTB, GRTC, GA (2), RMTA, PoV\*
- Administers funds collected from gas tax and sales tax specifically for transportation purposes
- Revenues disbursed according to three categories
- Advisory committees – Finance and Technical



# CVTA BACKGROUND

- Annual revenues for FY22 projected to be ~\$187M
- Three “pots” of funds distributed
- Weighted voting based on population
- Focus on leveraging local dollars for larger investment ie: debt
- Functions and powers:
  - Regional prioritization of projects
  - Annual regional transit plan
  - Oversee distribution of local funds
  - Issue bonds as needed

REVENUE DISTRIBUTION



# TRANSPORTATION PROCESS FLOW



# PROJECT SCORING & RANKING

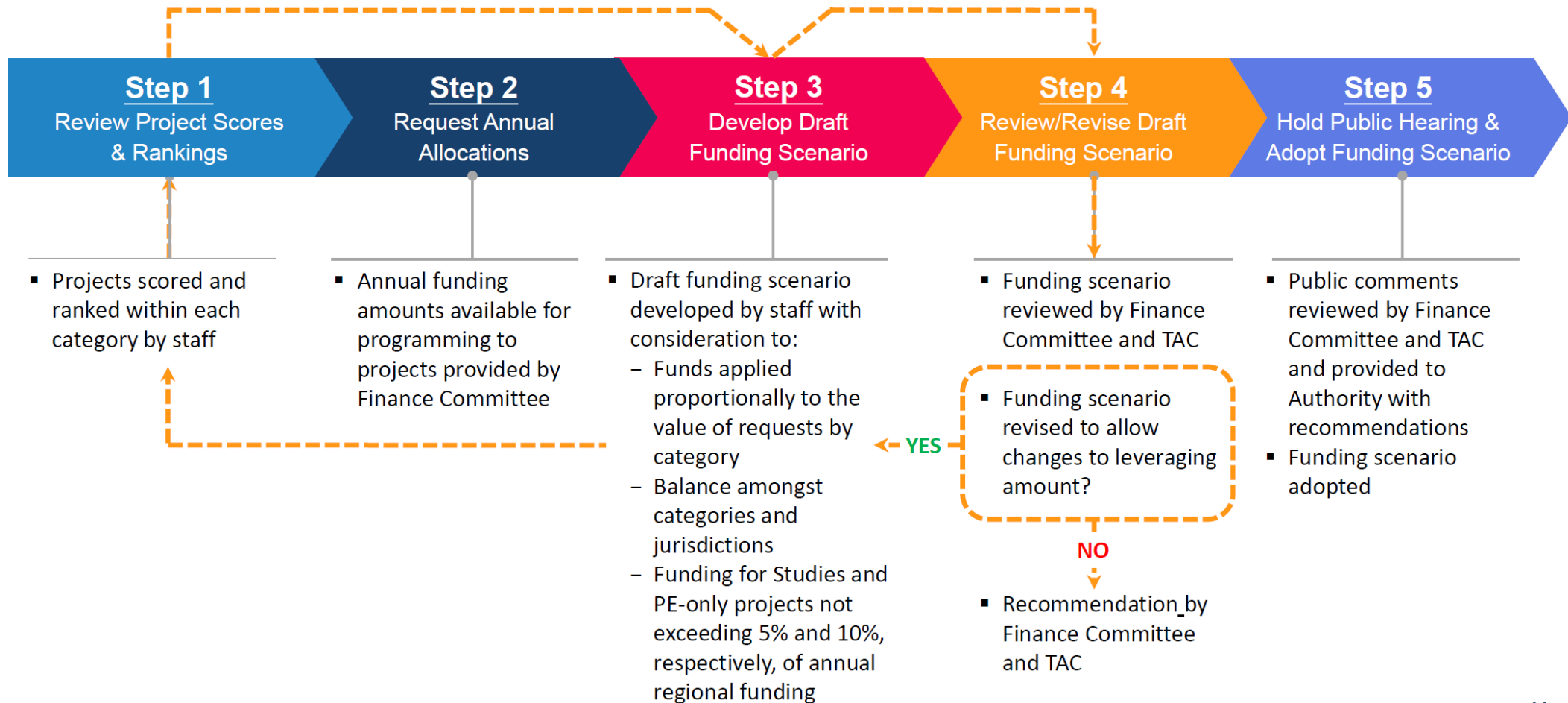
Table 4: CVTA Regional Scoring for Project Categories: Highway, Bike/Pedestrian, Multimodal, Transit, Studies, PE-Only

Goal	Safety		Mobility		Accessibility			
					Economic Development		Equity	
Goal Weight	38.5%		23%		38.5%			
Performance Measure	Crash Frequency	Crash Rate	Person Throughput	Person Hours of Delay	Access to Destinations	Access to Jobs	Access to Jobs (EJ)	Access to Destinations (EJ)
Performance Measure Weight	70%	30%	50%	50%	30%	30%	20%	20%
Description	Reduction in EPDO of Fatal and Injury Crashes (5-year period)	Reduction in EPDO of Fatal and Injury Crashes per 1 million VMT	Increase in Person Throughput (Peak Period)	Reduction in Person Hours of Delay (Peak Period)	Increase in average access to weighted destinations per 1,000 persons (travel time of 30 minutes for all modes) for all population	Increase in average job accessibility per person	Increase in average job accessibility per person (Total EJ Population within EJ Area)	Increase in average access to destinations per 1,000 persons (travel time of 30 minutes for all modes) for EJ population

Table 5: CVTA Regional Scoring for Project Category: Bridge

SGR Factor	Importance	Condition	Design Redundancy and Safety	Structure Capacity	Cost Effectiveness
Factor Weight	30%	25%	15%	10%	20%
Description	Traffic volume, truck traffic, detour route, future traffic volume, and key route designations	Measures overall condition of the bridge using detailed condition data compiled from the safety inspection report	Fracture-critical bridges, fatigue prone details, and scour and seismic vulnerability	Consideration of whether the bridge will be posted or has issues with clearances or waterway adequacy	Ratio of actual project cost to the cost for full replacement

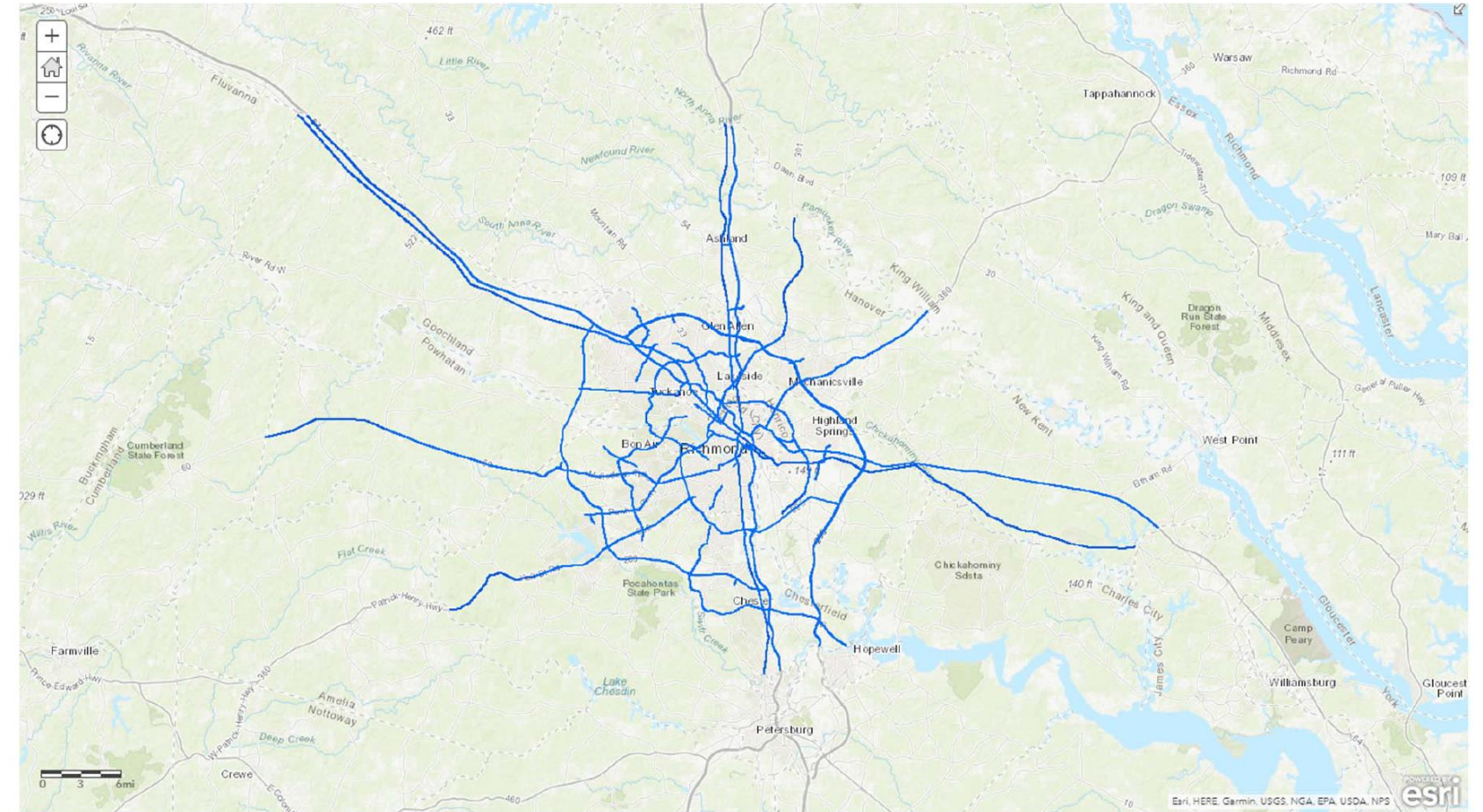
# PROJECT SELECTION



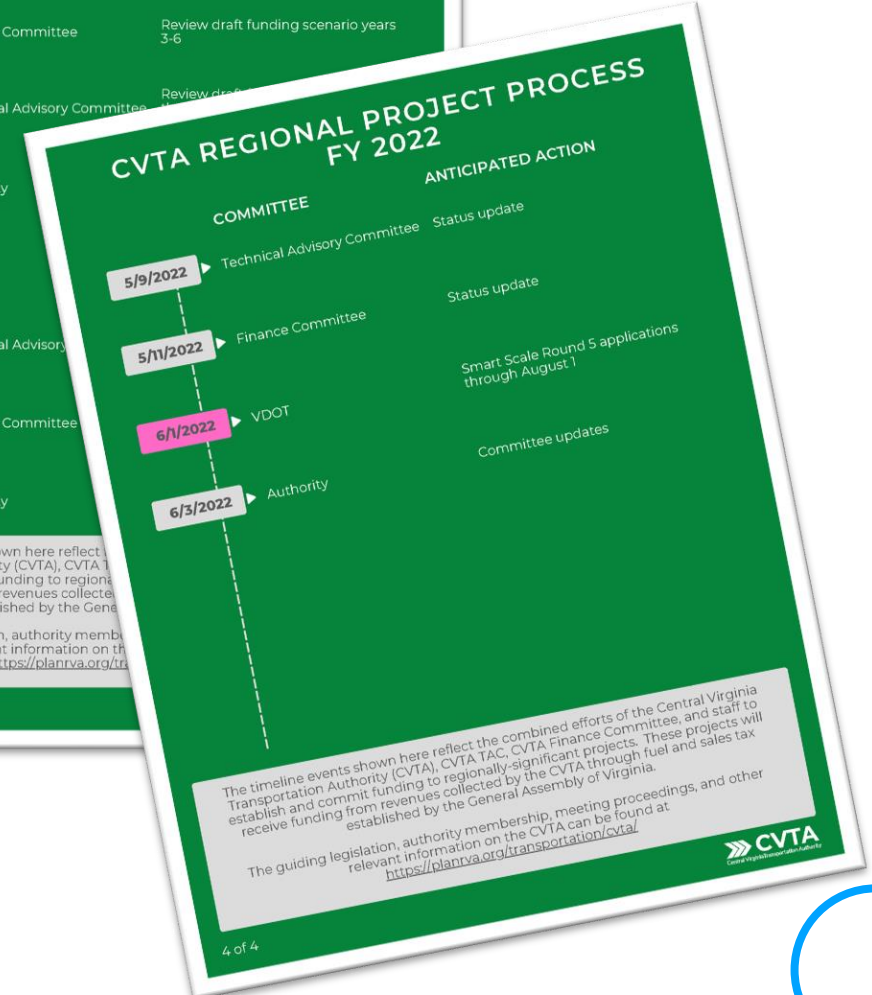
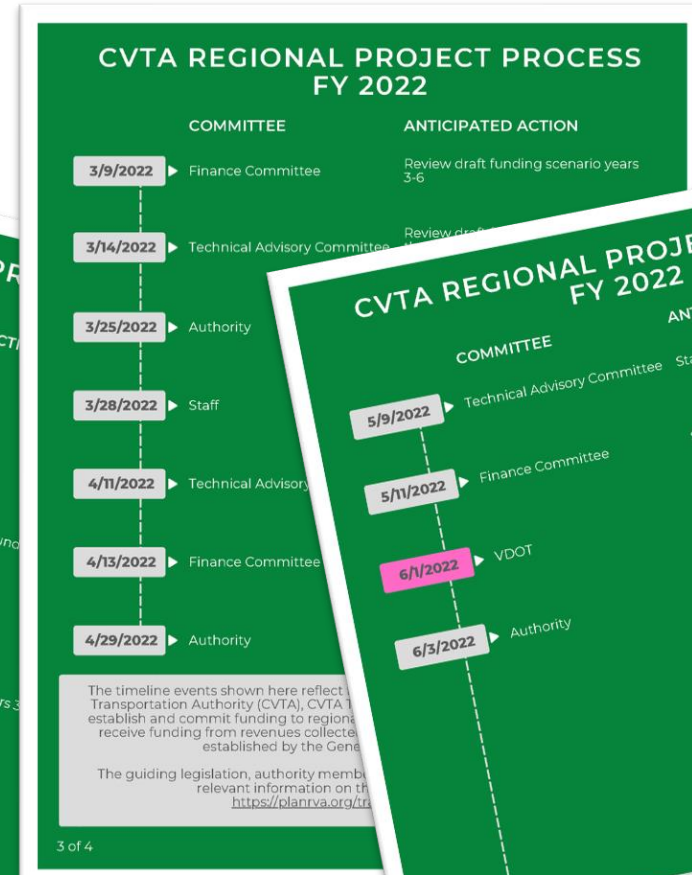
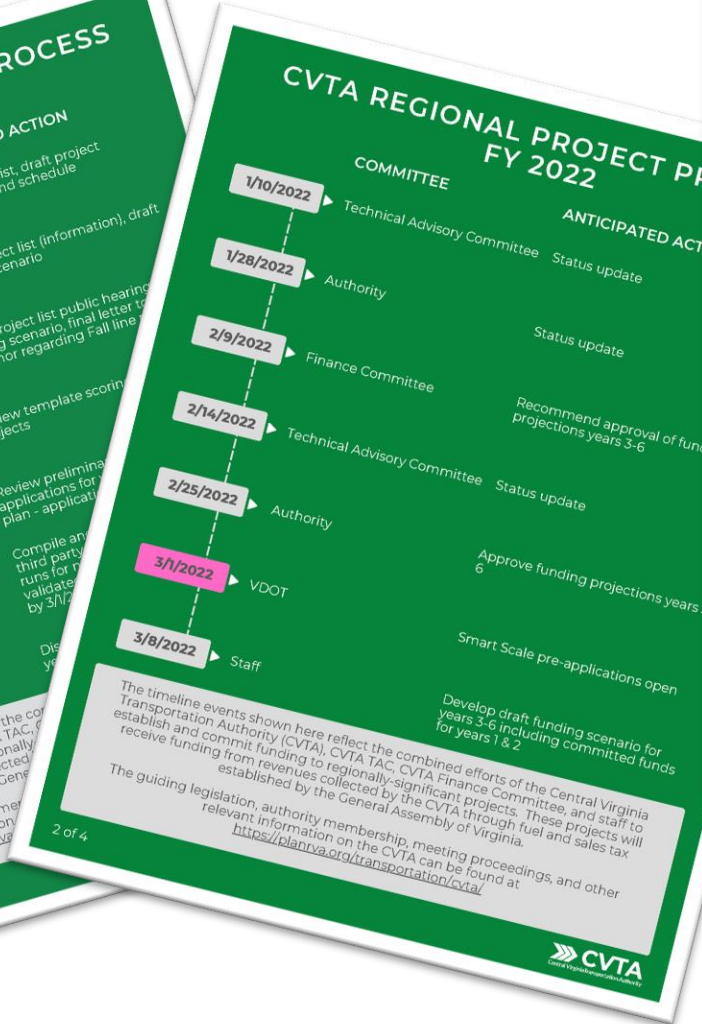
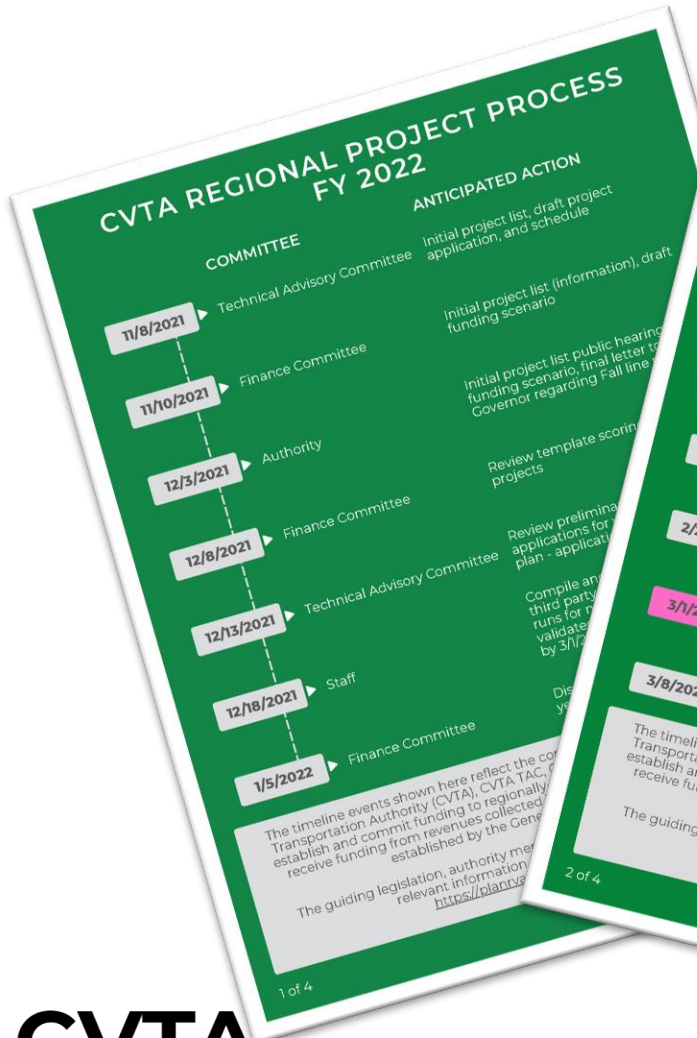


# ELIGIBLE PROJECTS

- Arterials
- 20,000 Vehicles per Day
- Corridor of Statewide Significance
- Arterial Preservation Network



# PROJECT TIMELINE







# PROJECT DEVELOPMENT PROCESS



## Project Applications

Develop a full inventory of regionally-significant project needs

## Cost Estimates

Understand planning-level cost factors based on engineering plans and best available information.  
Collaboratively develop budgets to horizon year.

## Funding Plan

Use scores and benefit/cost to rank projects and develop timebands for implementation to be included in recommended plan

## Performance Measures

Identify quantitative measures to assess project effectiveness and impact using key categories

## Project Scoring

Score individual projects using PMs and impact data from travel demand model, EJ analysis and custom scripts



# QUESTIONS?



## Email

[cparsons@planrva.org](mailto:cparsons@planrva.org)



## Phone

804.323.2033



## YouTube

[www.youtube.com/planrva](http://www.youtube.com/planrva)

