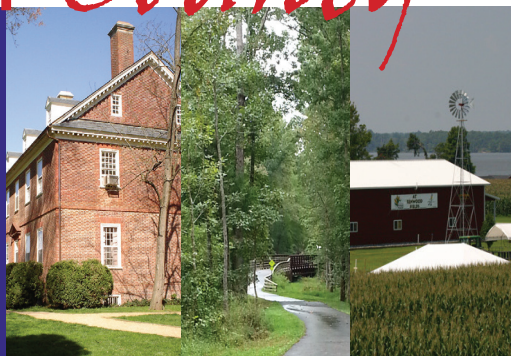
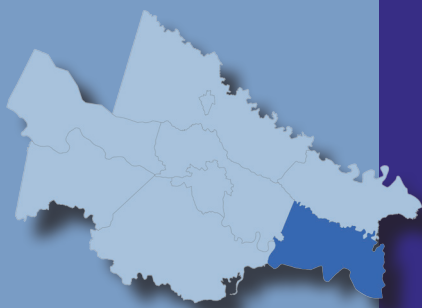


CHARLES CITY *County*



Main Administration Building
10900 Courthouse Road
Charles City, Virginia
Phone: (804) 652-4701

CHARLES CITY BOARD OF SUPERVISORS:

- Gilbert Smith, District 1
- Floyd Miles, Sr., District 3
- William Coadam, District 2

For more information please visit Charles City County's Board of Supervisors website [here](#).

RELATED REGIONAL STUDIES BY THE RICHMOND REGIONAL PLANNING DISTRICT COMMISSION:

[Existing Land Use Inventory](#)

[Green Infrastructure Report](#)

[Richmond Region Parks Inventory](#)

[Rural Long Range Transportation Plan](#)

[Capitalizing on the Capital Trail](#)

COMMUNITY PROFILE

Population is Growing:

County population grew **15.5%** in the past 24 years.

1990: 6,282 2000: 6,926 2010: 7,256 2014: 7,254

Median Age is Increasing:

Median age of residents increased by **12.9** years between 1990 and 2014.

1990: 35 2000: 40 2010: 47 2014: 47.9

Population Density is Increasing:

Residents per square mile increased by **16%** in the past 24 years.

1990: 31 2000: 34 2010: 35 2014: 35

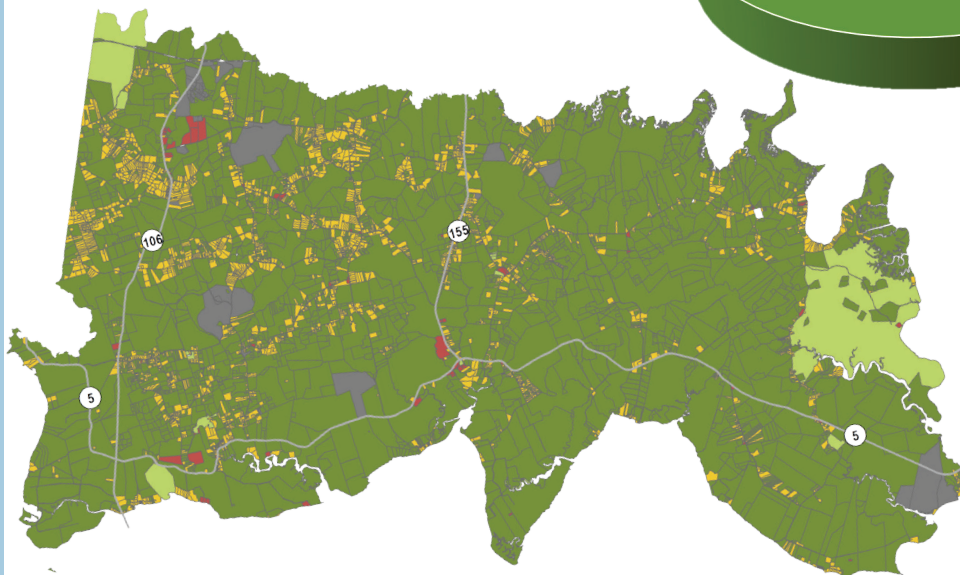
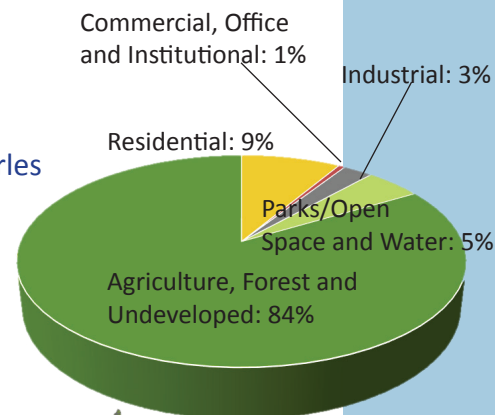
Source: U.S. Decennial Census 1990-2010, American Community Survey, 2014 5-Year Estimates.

Live/Work Balance:

71% of Charles City's working

residents work **outside** the County. **29%** of Charles City's working residents work **inside** the County

Source: U.S. Census, OnTheMap Application, Longitudinal-Employer Household Dynamics Program, 2014.



Source: Richmond Regional Planning District Commission Regional Existing Land Use Inventory 2013.

Revised April 2017